

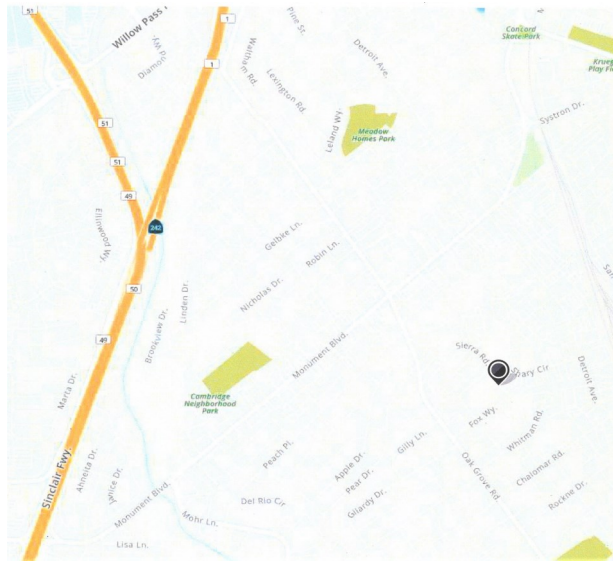
Light Industrial FOR LEASE

1018 Shary Circle, Unit "E"
Concord, California



Property Information

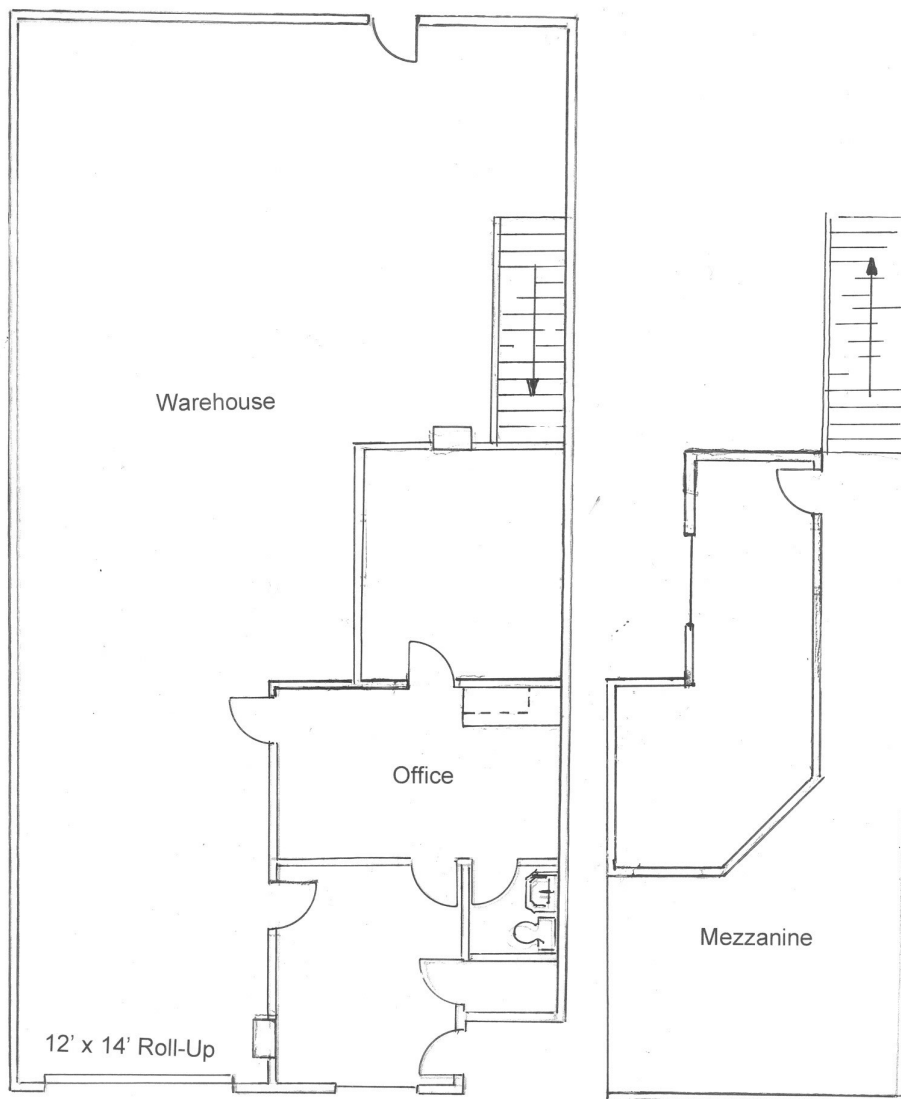
- \$5,000.00/Mo (Includes 3,000 SF Yard)
- Unit is 2,210 +/- Total Sq. Ft. Plus Yard
- Reception, Two Offices and a Rest Room
- Bonus Light Storage Mezzanine Area
- Skylight In Warehouse, 16'-18' Clear Ht.
- 3,000 SF Fenced, Paved, Yard Area
- One 12' x 14' Grade Level Roll-Up Door
- 100 Amp 110/208v 3 Phase Power
- Excellent Central Concord Location



Contact Listing Broker:
Thomas Caple
Director
(510) 908-0505
tom@dpccommercial.com

Deutscher Properties Corp.
370 Civic Drive
Pleasant Hill, CA
Office (925) 676-6166
Fax (925) 676-6177
www.dpccommercial.com

1018 Shary Circle, Unit "E" Concord, California



Contact Listing Broker:
Thomas Caple
CA BRE# 01089011
(510) 908-0505
tom@dpccommercial.com

Deutscher Properties Corp.
370 Civic Drive
Pleasant Hill, CA
Office (925) 676-6166
Fax (925) 676-6177
www.dpccommercial.com