



Keegan & Coppin
COMPANY, INC.

FOR LEASE

5331 SKYLANE BOULEVARD
SANTA ROSA, CA

HIGH END OFFICE SPACE



Go beyond broker.

REPRESENTED BY:

DAVE PETERSON, PARTNER
LIC # 01280039 (707) 528-1400, EXT 210
DPETERSON@KEEGANCOPPIN.COM

NICK MOSKOW, AGENT
LIC # 02194438 (707) 528-1400, EXT 254
N MOSKOW@KEEGANCOPPIN.COM



5331 SKYLANE BOULEVARD
SANTA ROSA, CA

**HIGH END
OFFICE SPACE**

HIGH END OFFICE SPACE FOR LEASE

PROPERTY INFORMATION

Space Size 2,950+/- SQFT

Lease Rate \$1.40psf Gross Per Month

Lease Terms 3-5 years

Zoning BP Business Park

Parking On-site

Total Bldg SF 6,556+/- SQFT

DESCRIPTION OF PREMISES

Class A Multi Tenant Flex/Office Building located in Airport Business Center. The property is located on the corner of Airport Blvd. and Skylane Blvd. with an excellent monument sign visibility. This space consists of 3 private offices (1 executive sized with private restroom), small ISO 8 Clean Room that can be converted back to 2 or more private offices, open to bull pen area and high end kitchen/break room.

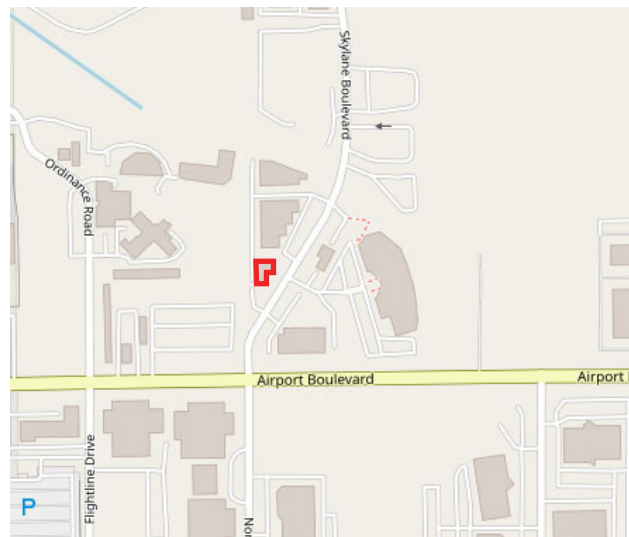
DESCRIPTION OF AREA

Sonoma County's unemployment rate is one of the lowest in California and the county continues to show long-term job growth in the health care, hospitality and business service sectors. And business and professional services jobs have increased from a year earlier for 13 consecutive months. In addition, new housing continues to increase throughout the county, while job growth and taxable sales also continue to rise.

HIGHLIGHTS

- Executive office with bathroom
- High end craftsmanship & finishes
- Expansive glassline
- Monument signage on Skylane Blvd
- Large private kitchen & break room
- Electric car charger on-site
- ISO 8 Clean Room

AREA MAP



REPRESENTED BY:

DAVE PETERSON, PARTNER
KEEGAN & COPPIN CO., INC.
LIC # 01280039 (707) 528-1400, EXT 210
DPETERSON@KEEGANCOPPIN.COM

NICK MOSKOW, AGENT
KEEGAN & COPPIN CO., INC.
LIC # 02194438 (707) 528-1400, EXT 245
N MOSKOW@KEEGANCOPPIN.COM

The above information, while not guaranteed, has been secured from sources we believe to be reliable. Submitted subject to error, change or withdrawal. An interested party should verify the status of the property and the information herein.



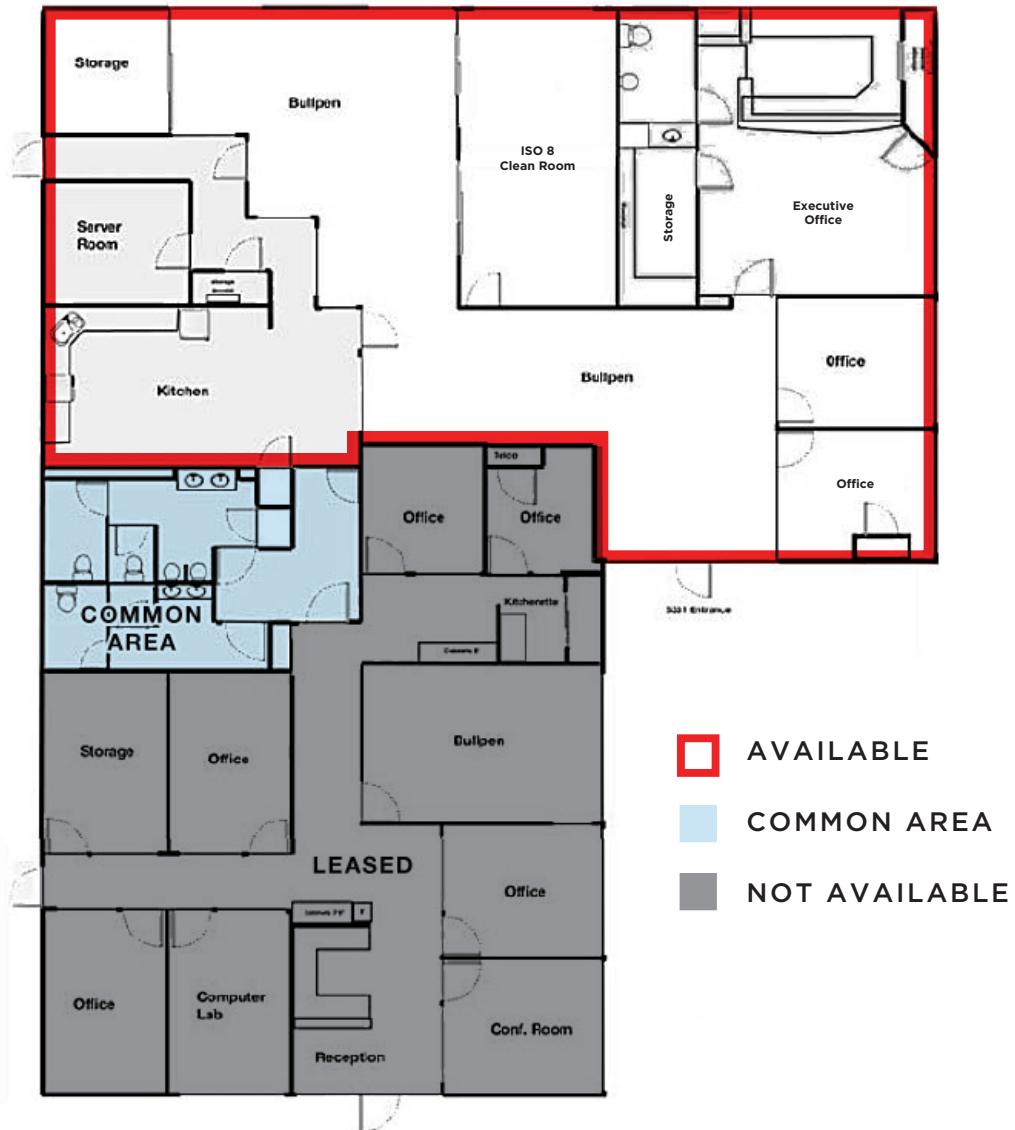
Keegan & Coppin
COMPANY, INC.



5331 SKYLANE BOULEVARD
SANTA ROSA, CA

**HIGH END
OFFICE SPACE**

FLOOR PLAN



REPRESENTED BY: DAVE PETERSON, PARTNER
KEEGAN & COPPIN CO., INC.
LIC # 01280039 (707) 528-1400, EXT 210
DPETERSON@KEEGANCOPPIN.COM

NICK MOSKOW, AGENT
KEEGAN & COPPIN CO., INC.
LIC # 02194438 (707) 528-1400, EXT 245
NOSKOW@KEEGANCOPPIN.COM

The above information, while not guaranteed, has been secured from sources we believe to be reliable. Submitted subject to error, change or withdrawal. An interested party should verify the status of the property and the information herein.



5331 SKYLANE BOULEVARD
SANTA ROSA, CA

HIGH END
OFFICE SPACE

PROPERTY PHOTOS



REPRESENTED BY:

DAVE PETERSON, PARTNER
KEEGAN & COPPIN CO., INC.
LIC # 01280039 (707) 528-1400, EXT 210
DPETERSON@KEEGANCOPPIN.COM

NICK MOSKOW, AGENT
KEEGAN & COPPIN CO., INC.
LIC # 02194438 (707) 528-1400, EXT 245
N MOSKOW@KEEGANCOPPIN.COM

The above information, while not guaranteed, has been secured from sources we believe to be reliable. Submitted subject to error, change or withdrawal. An interested party should verify the status of the property and the information herein.



5331 SKYLANE BOULEVARD
SANTA ROSA, CA

HIGH END
OFFICE SPACE

AERIAL MAP



Keegan & Coppin Co., Inc.
1355 N Dutton Ave., Suite 100
Santa Rosa, CA 95401
keegancoppin.com
P: (707) 528-1400

REPRESENTED BY:

DAVE PETERSON, PARTNER
LIC # 01280039 (707) 528-1400, EXT 210
DPETERSON@KEEGANCOPPIN.COM

NICK MOSKOW, AGENT
LIC # 02194438 (707) 528-1400, EXT 254
NOSKOW@KEEGANCOPPIN.COM