



# 705 Maple St

Bristol, IN 46507

## Property Highlights

- The buildings are located in a prime industrial park in Elkhart County near transportation and logistics.
- *Direct rail access with a rail spur*
- Good access to the 80/90 Indiana Toll Road (3.5 miles) and US 20 bypass (3.7 miles)
- 600 amp electrical service 3 phase 480 volt power on site
- Well maintained buildings with large open bay areas in the warehouse/manufacturing spaces that provide good clear heights, multiple overhead doors and docks, and power to support a variety of potential manufacturing and distribution users
- Renovation/capital improvements made in 2016/2022 to both the office and warehouse/manufacturing spaces

**SALE PRICE**

**\$5,450,000**

**LEASE RATE**

**\$4.95 SF/YR (NNN)**

Available SF:	±104,392 SF
Lot Size:	±4.31 Acres
Building Size:	±104,392 SF

## Available Adjacent Buildings:

606 Legion St. - ±52,681 SF Available for Sale/Lease  
 200 Legion St. - ±50,728 SF Available for Sale/Lease

**Jeremy McClements**  
 Senior Vice President

jmmclements@bradleyco.com  
 574.970.9004

**Jack Williams**  
 Broker

jwilliams@bradleyco.com  
 231.357.5418

**Dan Skodras**  
 Senior Vice President

dskodras@bradleyco.com  
 574.237.6052

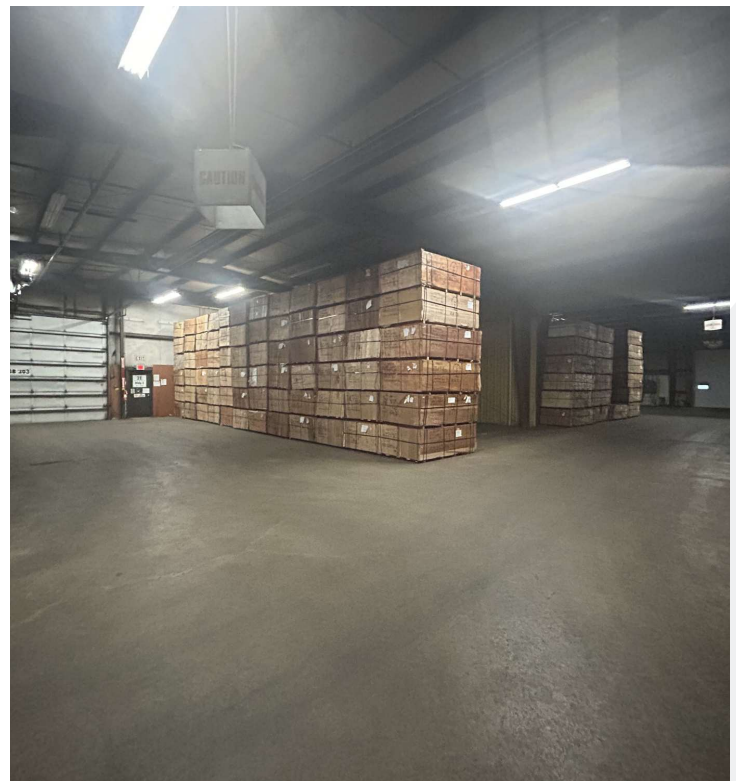


## Location Information

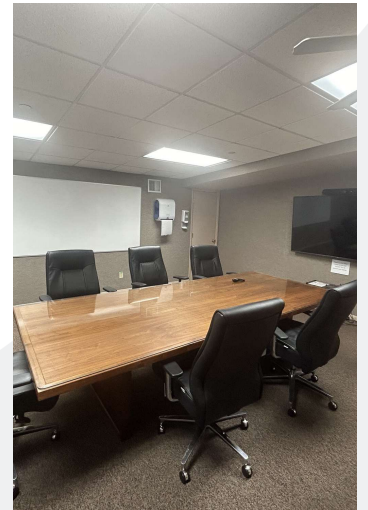
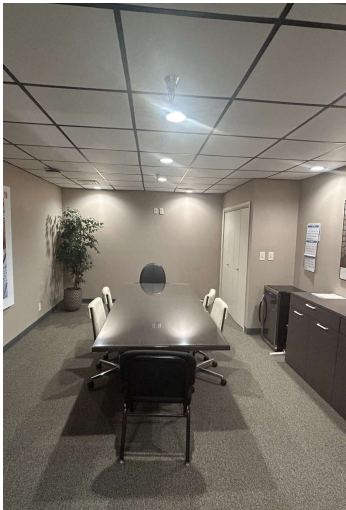
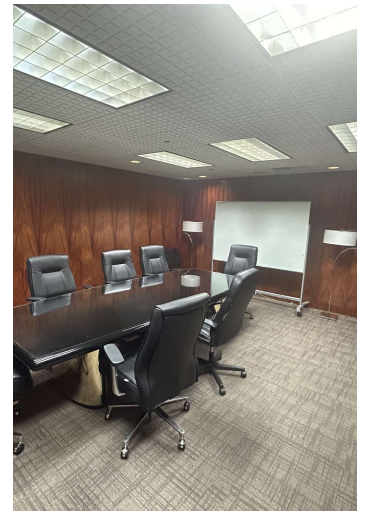
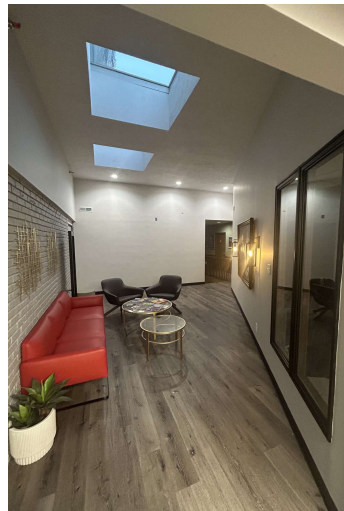
Street Address	705 Maple St
City, State, Zip	Bristol, IN 46507
County	Elkhart

## Property Information

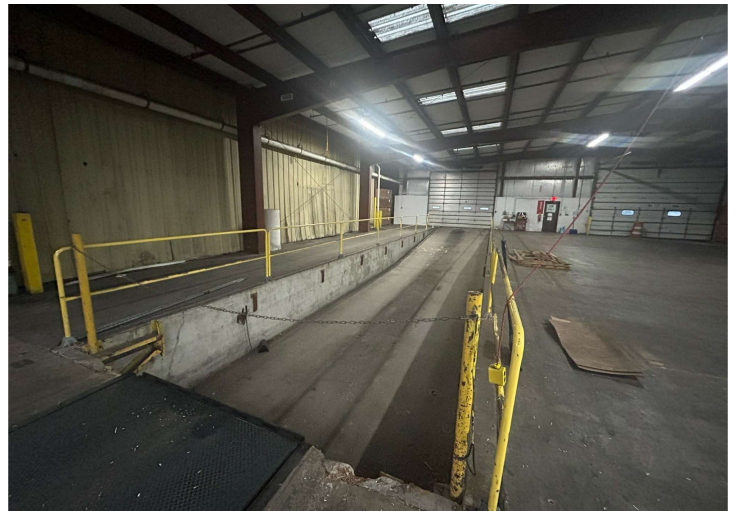
Property Type	Industrial
Property Subtype	Manufacturing
Zoning	M-2: Heavy Manufacturing District
Lot Size	±4.31 Acres
APN #	20-03-27-328-003.000-031
Year Built	1973
Renovated	2016/2022
Eave Heights	16'-18'
Doors/Docks	1 dock door; 9 OHD; 6 rail access doors
Building SF	±104,392 SF
Office SF	±13,206 SF
Power	600 amp electrical service 3 phase 480 volt power on site
HVAC	Radiant Heat; Thermal Cyclor; full HVAC in office
Structural Frame	Pre-Engineered Metal Frame
Roof	Rubber Membrane

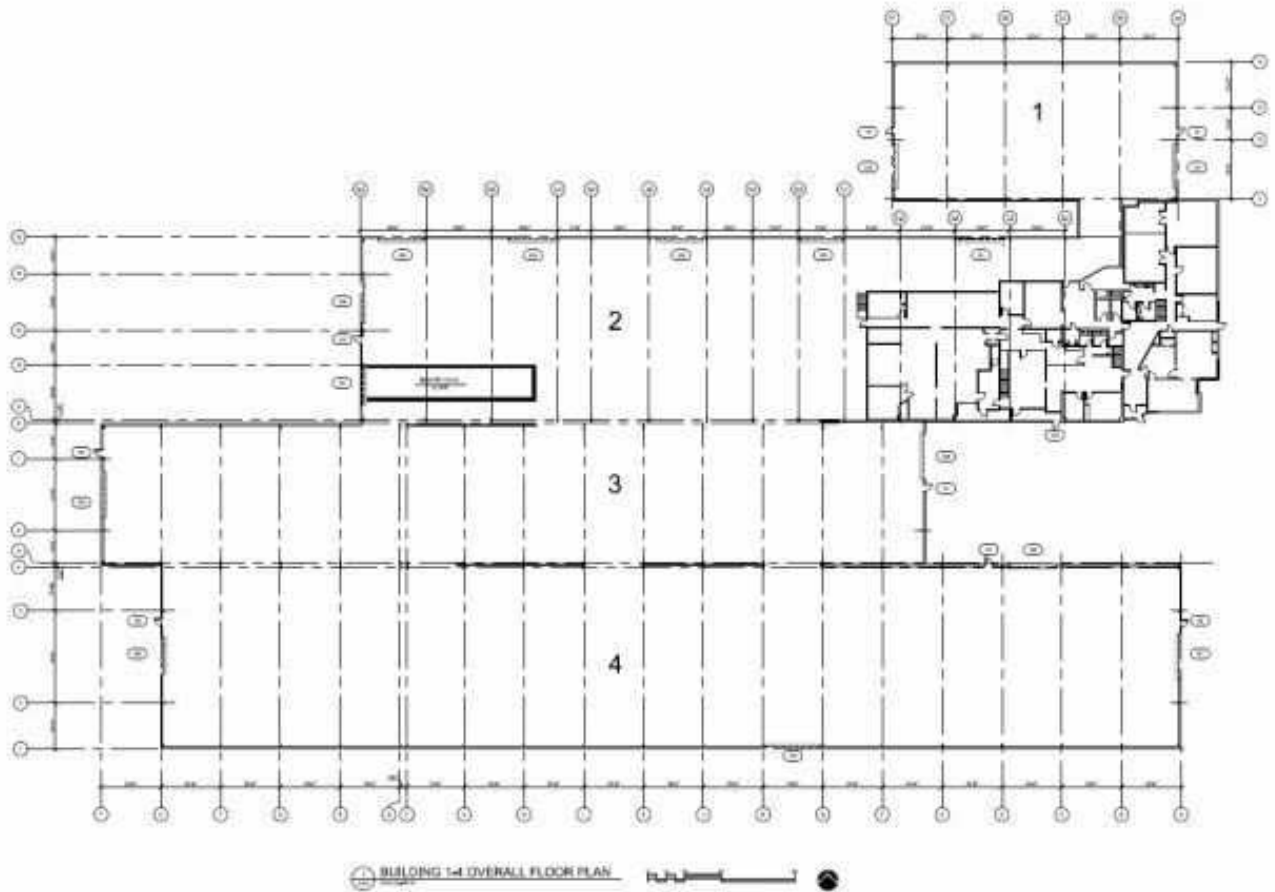




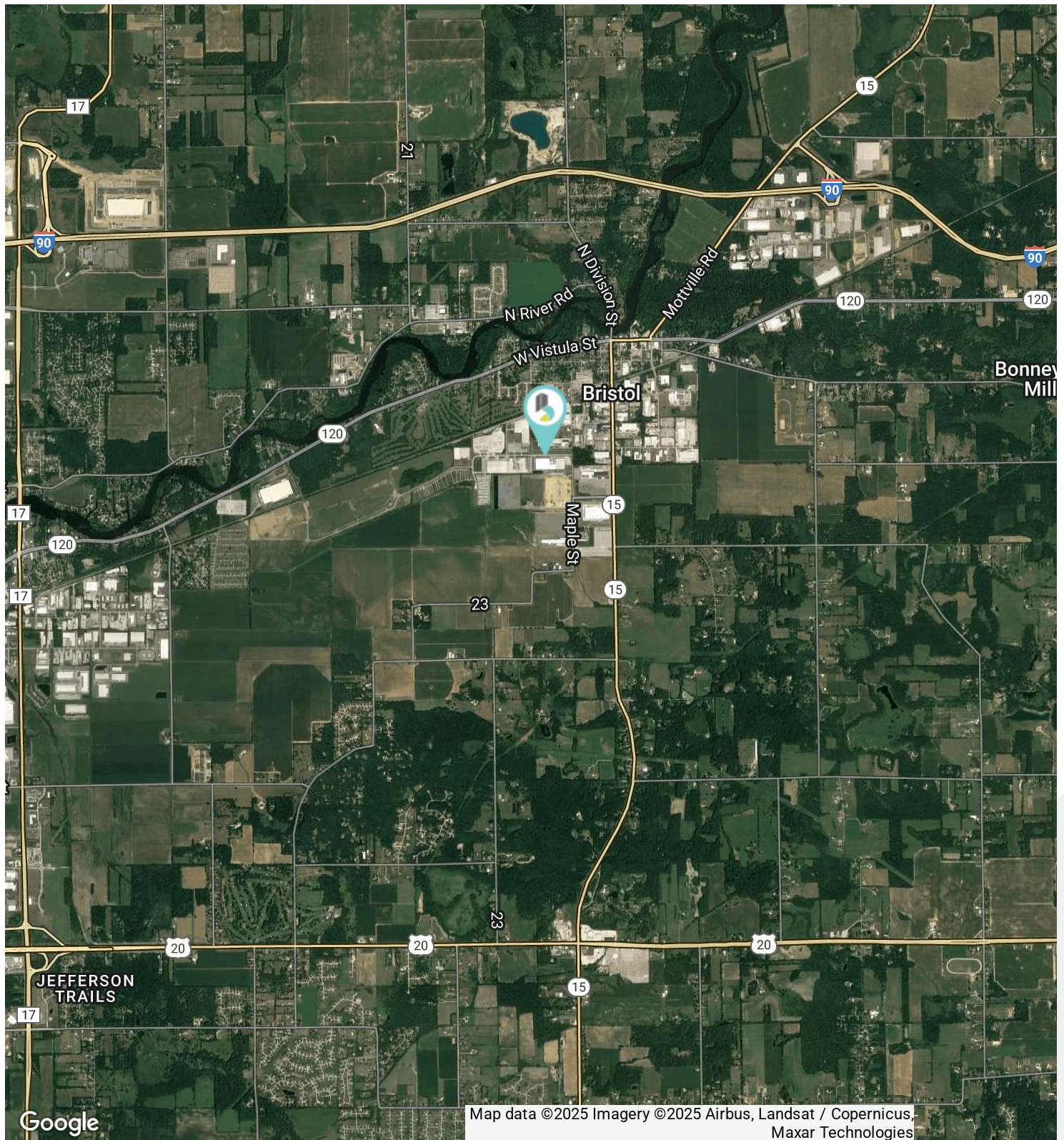












Map data ©2025 Imagery ©2025 Airbus, Landsat / Copernicus,  
Maxar Technologies