



FOR LEASE - Standalone Industrial/Office Building

438 Auzerais Avenue, San Jose



- Building Size: 2,100 SF
- Lot Size: +/-10,500 sf
- APN: 264-25-098
- Private office/Reception
- Mezzanine in Warehouse
- Easy access to 87/280/Light Rail

- Walking distance to Downtown San Jose
- 3 Roll Up Doors
- Within ½ mile to Google Campus
- Fenced Yard
- Adjacent 1,400 sf House can be rented together (3/1)
(DO NOT DISTURB TENANT IN HOUSE)

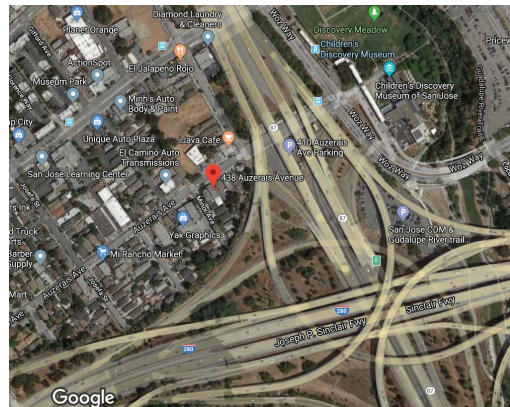
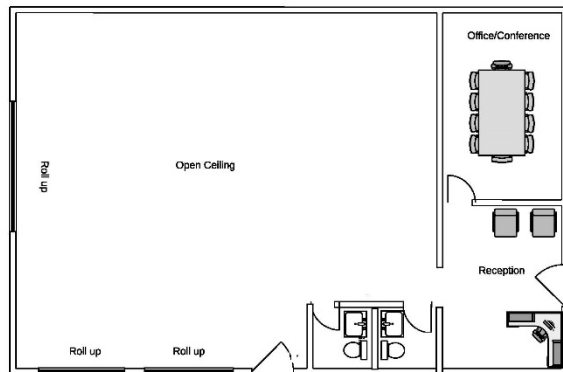
Kevin Peixoto
KPA Commercial, Inc.
408-557-0167
kevin@kpacommercial.com
www.kpacommercial.com
1725 S. Bascom Ave
Suite 1050
Campbell, CA 95008



FOR LEASE

Standalone Industrial/Office Building

438 Auzerais Avenue, San Jose



Kevin Peixoto
KPA Commercial, Inc.
408-557-0167
kevin@kpacommercial.com
www.kpacommercial.com
1725 S. Bascom Ave
Suite 1050
Campbell, CA 95008