



**FOR SALE/LEASE**

## **7500 BOSTON BLVD**

SPRINGFIELD, VA 22153

**79,580 SF**

- Dock-door loading
- 20' Clear height
- 40'x30' Column Spacing
- Zoned I-5
- Excellent window line
- Available July 1, 2025
- Abundant Parking
- Stable Ownership
- Convenient I-95 Access
- Lot size: Approximately 4.6 acres

For more information, please contact:

**Jon Lawrence**

Executive Director

+1 703 847 2787

[jon.lawrence@cushwake.com](mailto:jon.lawrence@cushwake.com)

**Ed Zaptin**

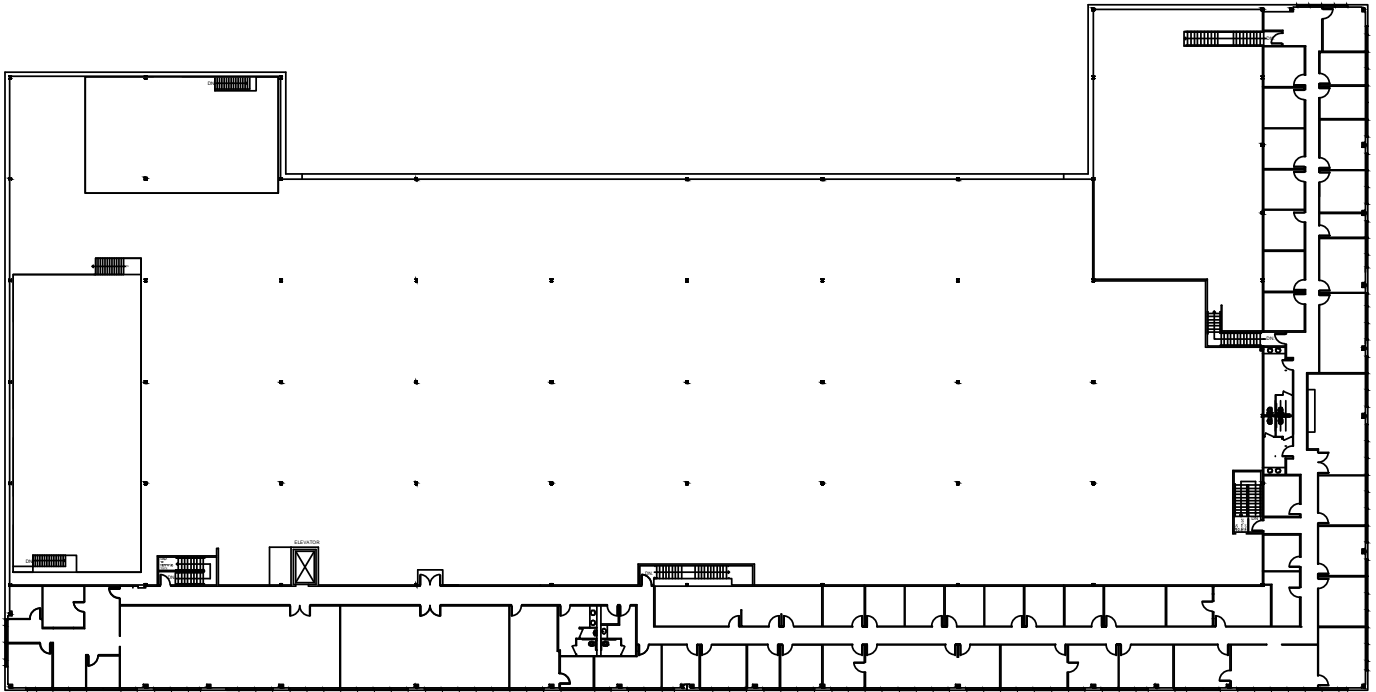
Senior Director

+1 703 847 2730

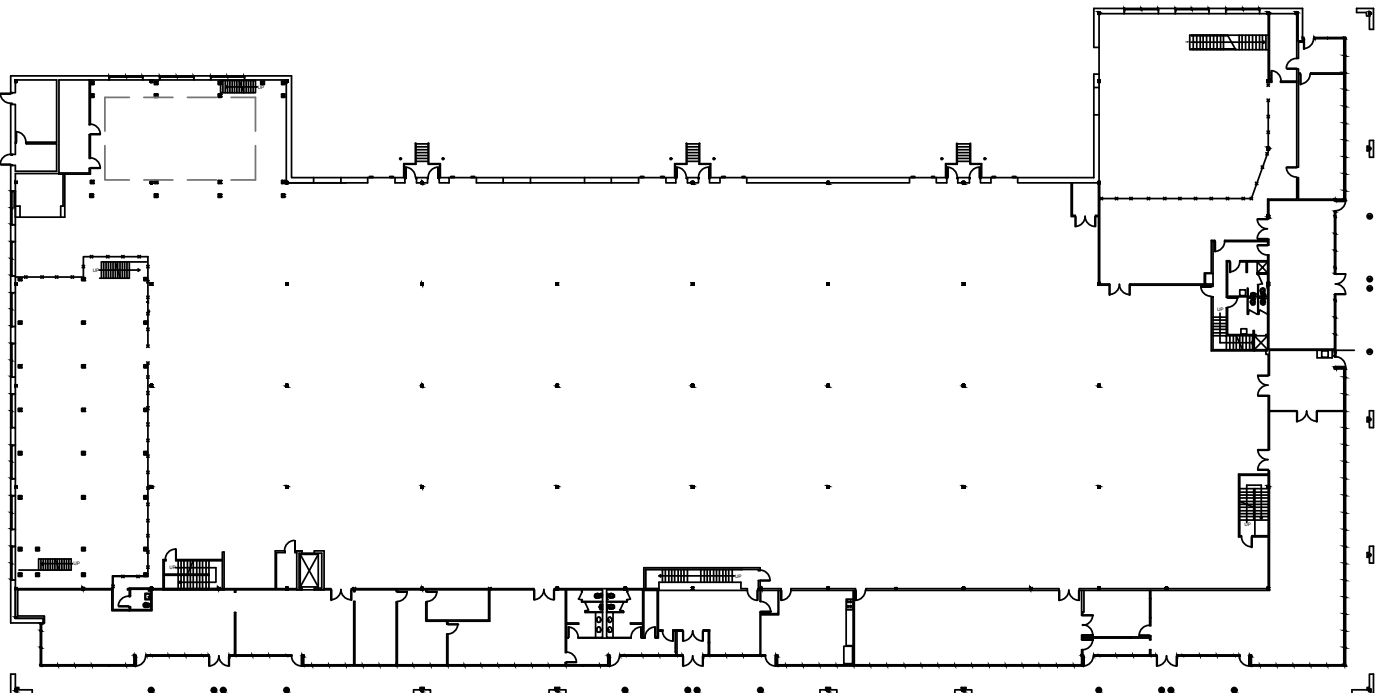
[ed.zaptin@cushwake.com](mailto:ed.zaptin@cushwake.com)

# FLOOR PLANS

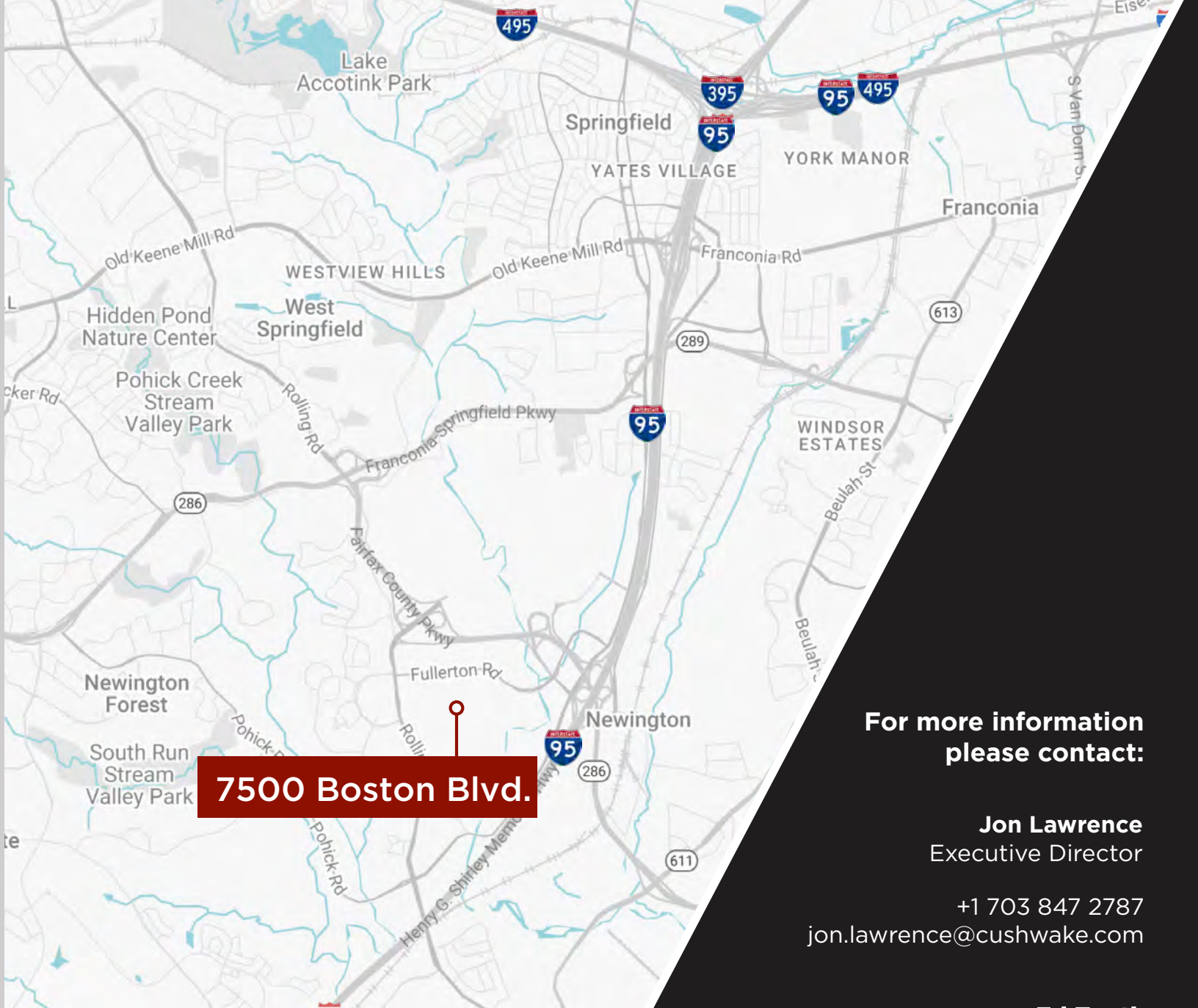
25,000 - 79,580 SF AVAILABLE



MEZZANINE



First Floor



**7500 Boston Blvd.**

**For more information  
please contact:**

**Jon Lawrence**  
Executive Director

+1 703 847 2787  
jon.lawrence@cushwake.com

**Ed Zaptin**  
Senior Director  
  
+1 703 847 2730  
ed.zaptin@cushwake.com

1800 Tysons Blvd, Suite 200  
Tyson's Corner, VA 22102  
cushmanwakefield.com

©2025 Cushman & Wakefield. All rights reserved. The information contained in this communication is strictly confidential. This information has been obtained from sources believed to be reliable but has not been verified. NO WARRANTY OR REPRESENTATION, EXPRESS OR IMPLIED, IS MADE AS TO THE CONDITION OF THE PROPERTY (OR PROPERTIES) REFERENCED HEREIN OR AS TO THE ACCURACY OR COMPLETENESS OF THE INFORMATION CONTAINED HEREIN, AND SAME IS SUBMITTED SUBJECT TO ERRORS, OMISSIONS, CHANGE OF PRICE, RENTAL OR OTHER CONDITIONS, WITHDRAWAL WITHOUT NOTICE, AND TO ANY SPECIAL LISTING CONDITIONS IMPOSED BY THE PROPERTY OWNER(S). ANY PROJECTIONS, OPINIONS OR ESTIMATES ARE SUBJECT TO UNCERTAINTY AND DO NOT SIGNIFY CURRENT OR FUTURE PROPERTY PERFORMANCE.

