

FOR LEASE



8890 E 116th St.
Fishers, IN 46038

PROPERTY HIGHLIGHTS

- 61,000 SF mixed-use, office, retail & medical office building anchored by Community Health
- 11,028 SF For Lease:
 - Suite 150 - 4,362 SF
 - Suite 280 - 3,861 SF
 - Suite 250 - 2,805 SF
- Convenient, attached parking garage with 332 spaces
- Situated on the highly sought-after Downtown Fishers corridor at the signalized intersection of 116th Street & Lantern Road
- Excellent exposure with approximately 36,000 VPD on 116th Street
- Immediate access to I-69
- Surrounded by numerous, walkable dining, retail, and entertainment amenities
- Direct connection to the Nickle Plate Trail via Lantern Road
- Approximately 6 miles from major area hospitals, including Community Health Hospital North, IU Health Saxony Hospital, and Ascension St. Vincent Fishers

THE EDGE

8890 E 116th St.
Fishers, IN 46038



CONTACT

Jennifer McAllister
Brokerage Associate
(317) 288-9022
jmcallister@cciin.com

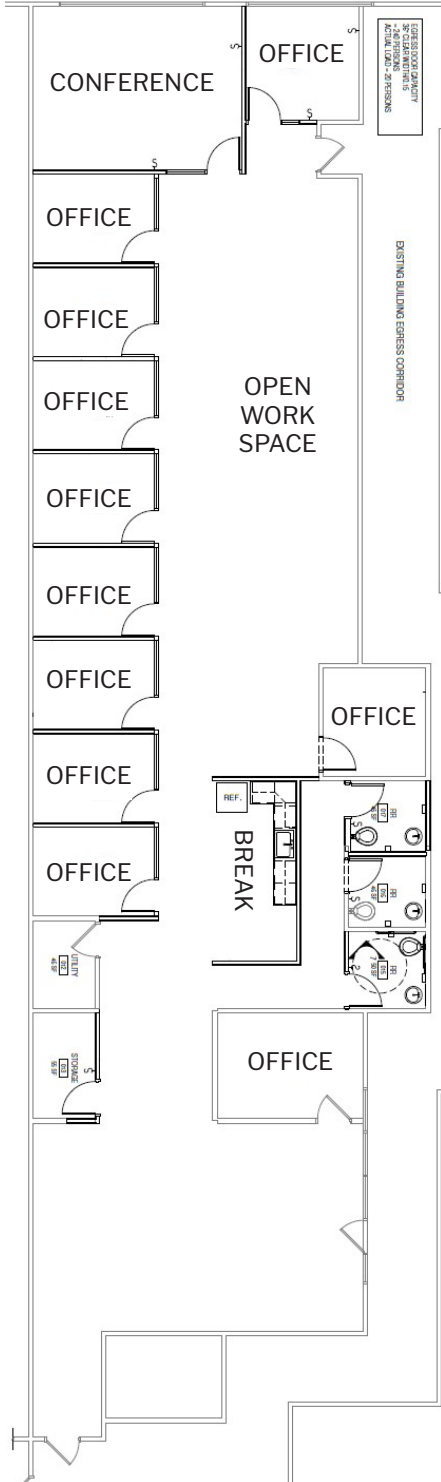
Cornerstone Companies, Inc.
8902 N Meridian Street, Suite 205
Indianapolis, IN, 46260

FLOOR PLAN

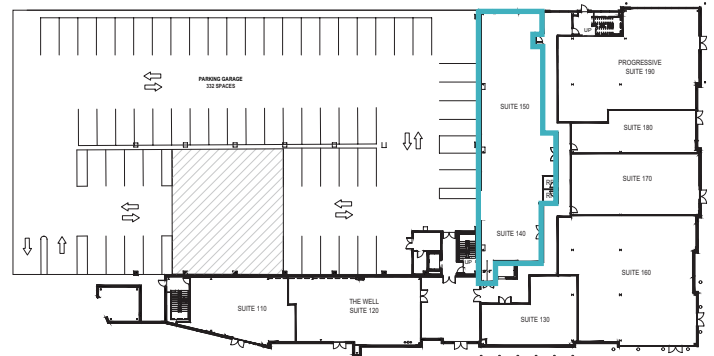
1st Floor

Suite 150 - 4,362 SF

Medical Office



KEY PLAN

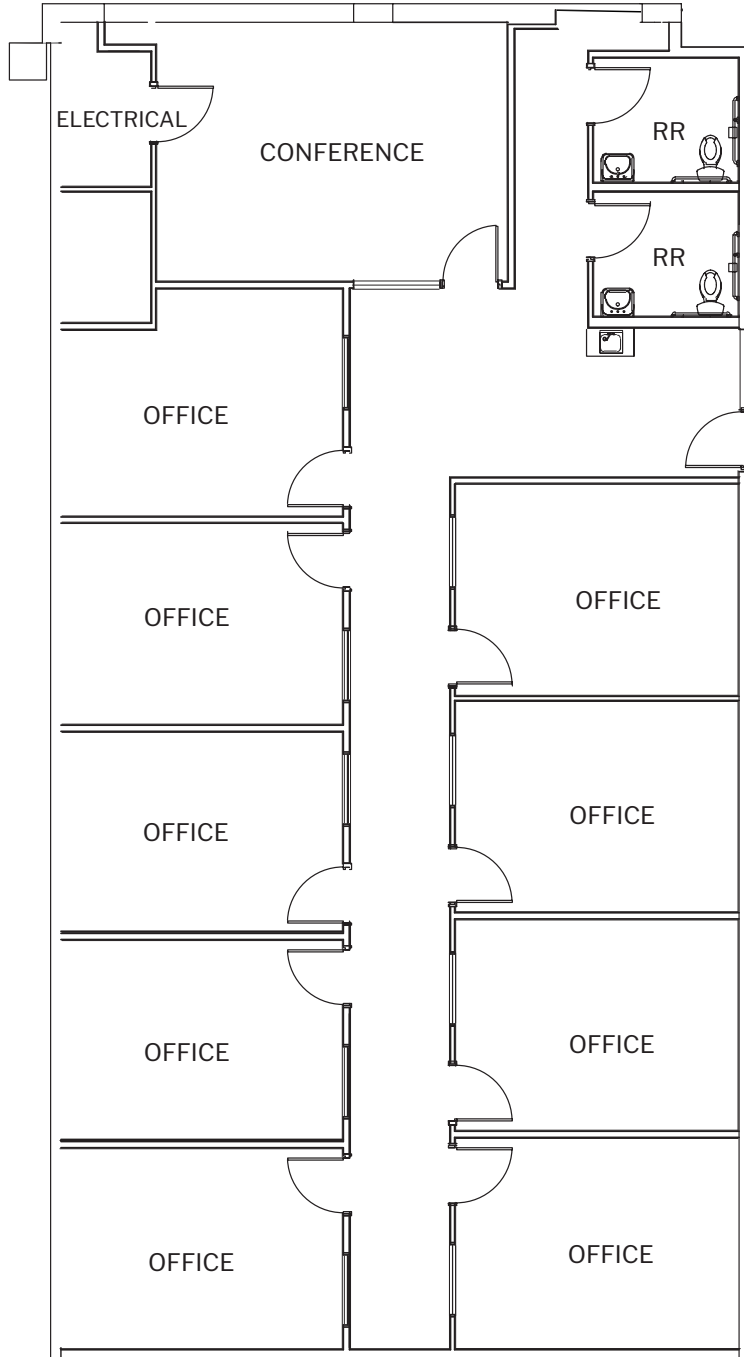


FLOOR PLAN

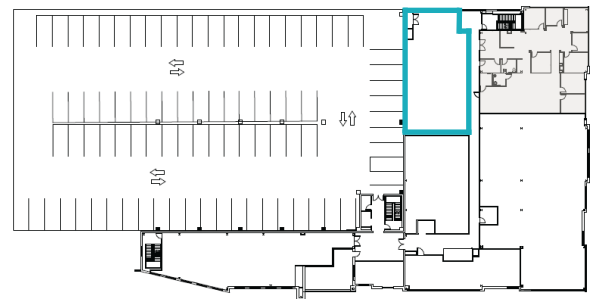
2nd Floor

Suite 250 - 2,805 SF

Medical Office



KEY PLAN

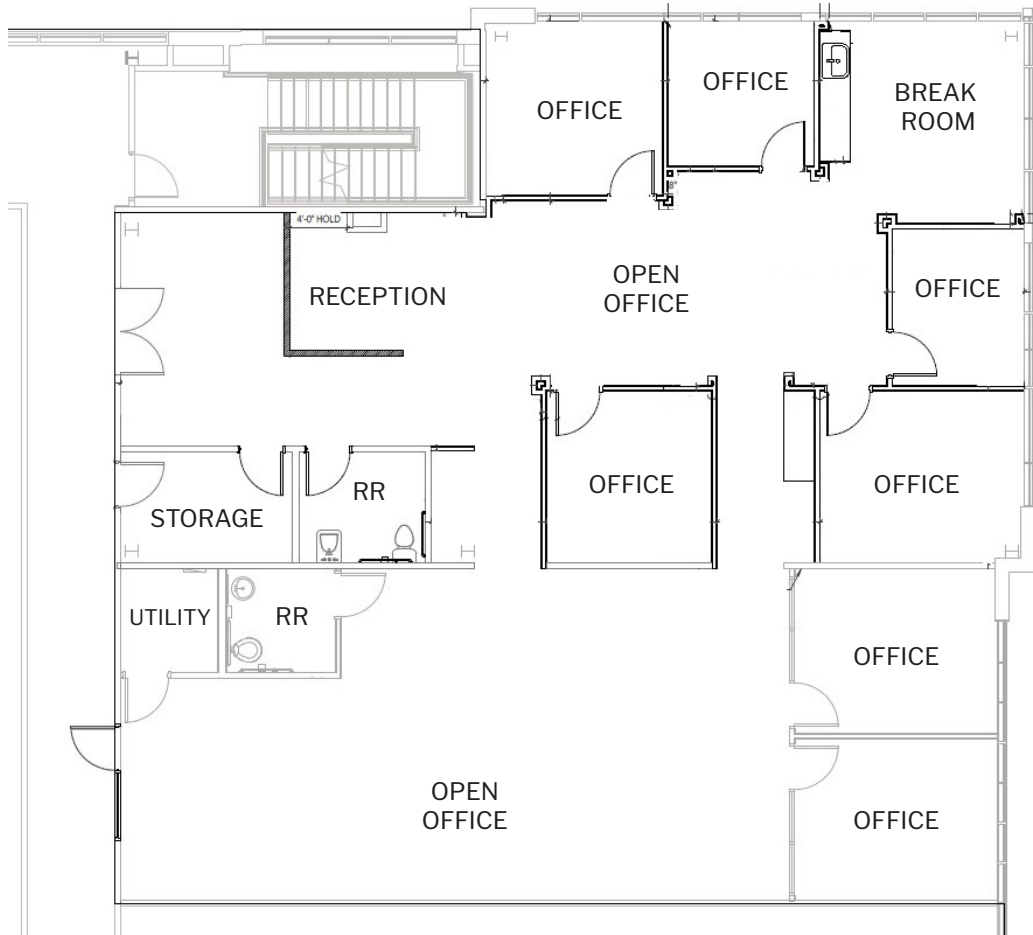


FLOOR PLAN

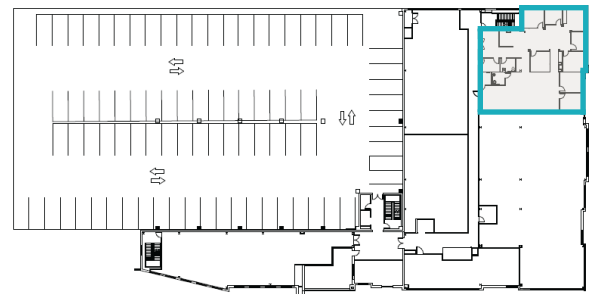
2nd Floor

Suite 280 - 3,861 SF

Medical Office



KEY PLAN





TRAFFIC COUNT

35,967 vehicles per day on East 116th Street

6,000 vehicles per day on Lantern Road

DEMOGRAPHICS (5 - mile radius)

168,749
Population

38.1
Median Age

65,479
Households

\$125,733
Average Household Income

CONTACT

Jennifer McAllister
Brokerage Associate
(317) 288-9022
jmcallister@cciin.com



© 2024 Cornerstone Companies, Inc. All rights reserved. Although the information contained herein has been obtained from sources deemed reliable, Owner, Cornerstone Companies, Inc., and/or their representatives, brokers or agents make no representation or warranty as to its accuracy or completeness. Any reliance on this information is solely at your own risk.