



LAND FOR SALE

1020 LOFTIS BLVD

NEWPORT NEWS, VA 23606



# 1020 LOFTIS BLVD

NEWPORT NEWS, VA 23606

## PROPERTY SUMMARY



## VIDEO

### PROPERTY DESCRIPTION

This prime development opportunity is located at the entrance to Port Warwick, an award-winning mixed-use community located off Jefferson Avenue in Newport News. Port Warwick features an attractive mix of retail, medical, office, townhomes and apartments situated around Styron Square, a three-acre green space.

### PROPERTY HIGHLIGHTS

- Ideal site for medical, office, or retail
- Site can accommodate a 10,000 SF, two-story building
- Located across the street from Sentara Port Warwick Medical Campus
- Just one-half mile from City Center @ Oyster Point and less than two miles from I-64

### OFFERING SUMMARY

<b>Sale Price:</b>	\$650,000
<b>Lot Size:</b>	0.79 Acres
<b>Zoning:</b>	C1

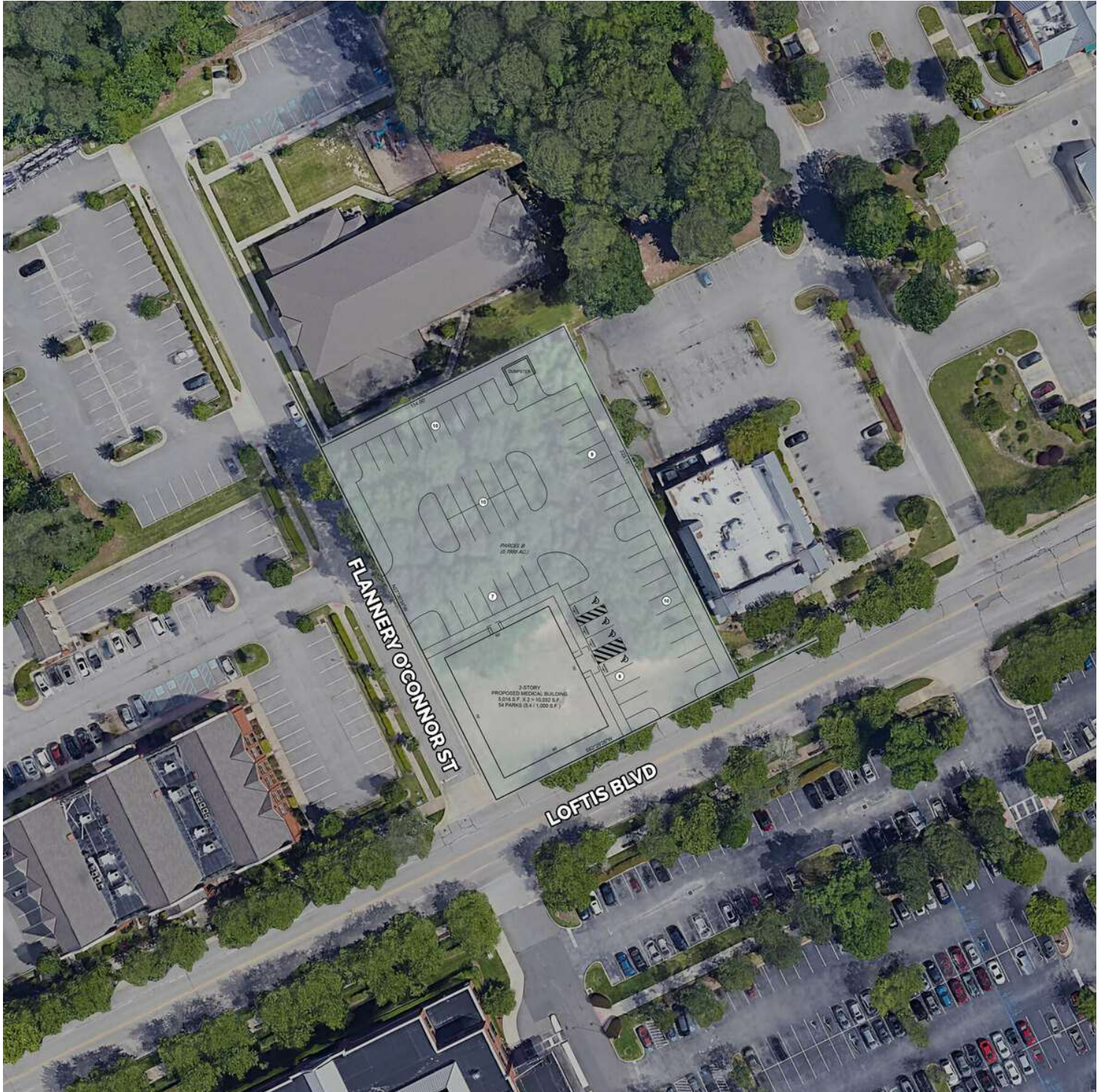
### DEMOGRAPHICS

	1 MILE	3 MILES	5 MILES
<b>Total Households</b>	6,811	34,873	70,503
<b>Total Population</b>	13,785	83,968	172,186
<b>Average HH Income</b>	\$73,804	\$92,081	\$95,478

# 1020 LOFTIS BLVD

NEWPORT NEWS, VA 23606

CONCEPTUAL PLAN



# 1020 LOFTIS BLVD

NEWPORT NEWS, VA 23606

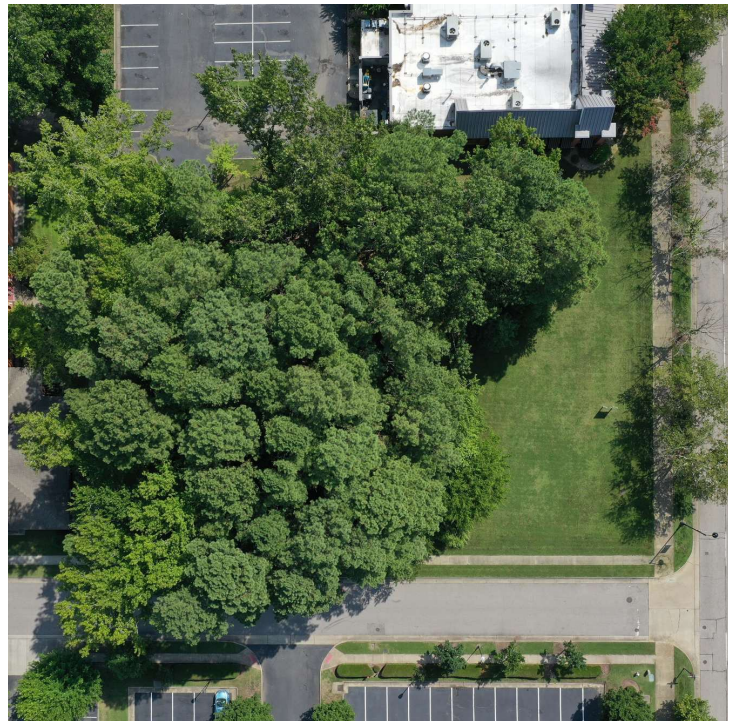
LOCAL AREA

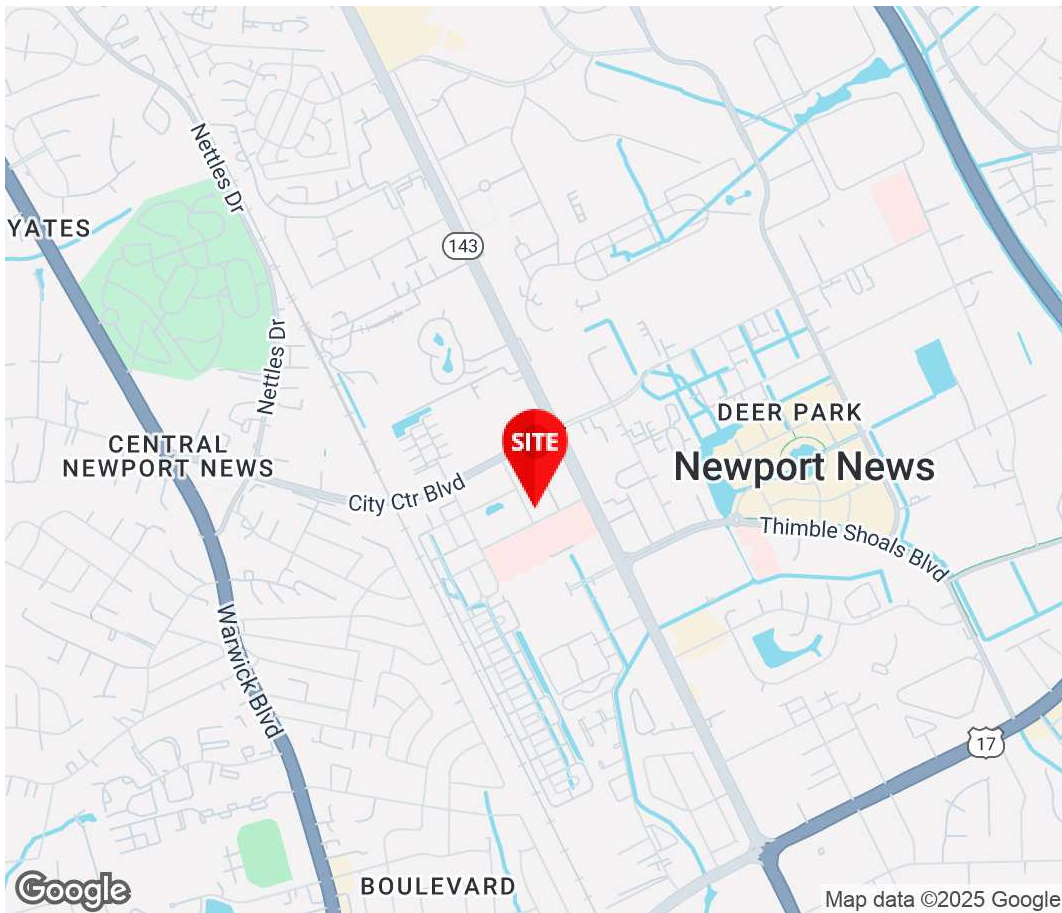
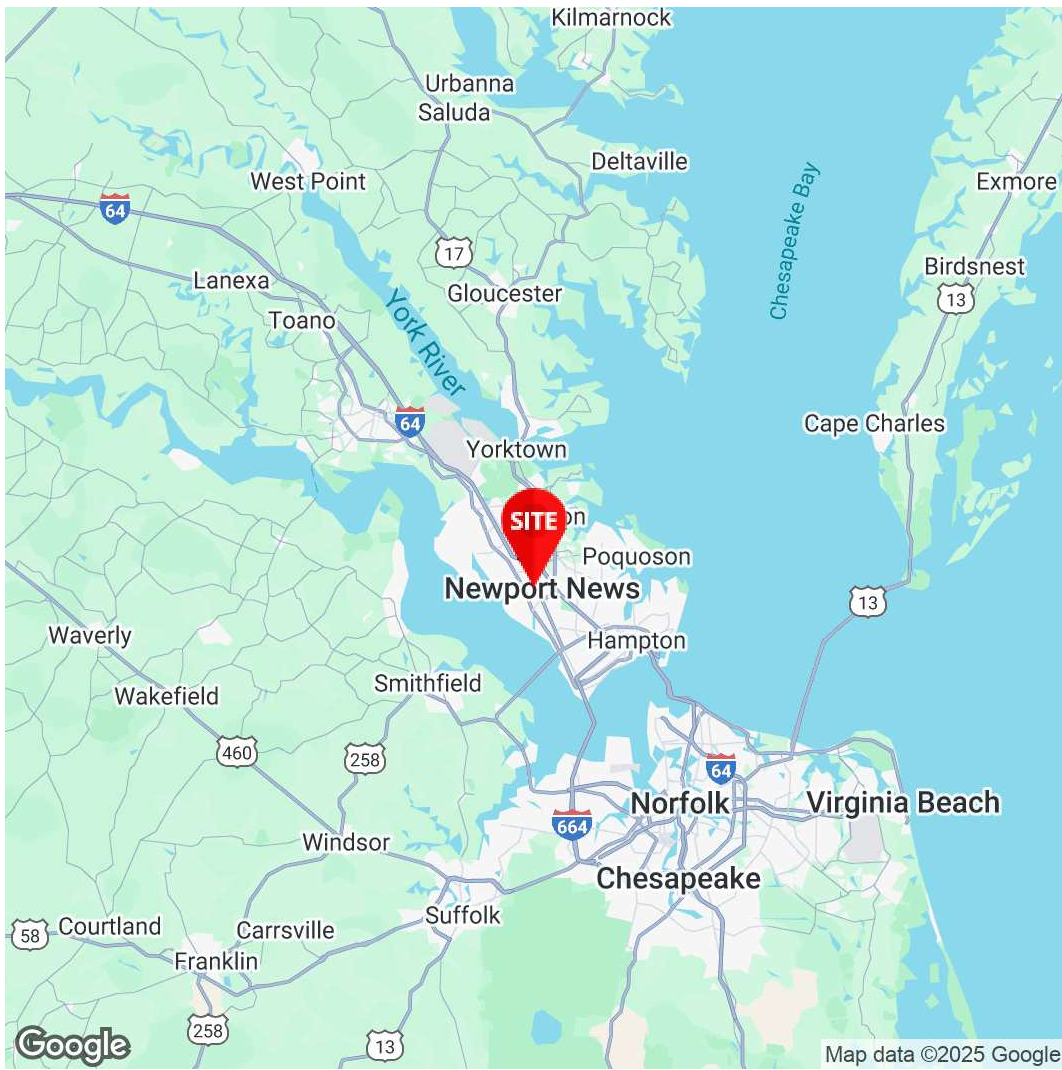


# 1020 LOFTIS BLVD

NEWPORT NEWS, VA 23606

ADDITIONAL PHOTOS





**Jason Oliver, CCIM**  
Senior Vice President,  
Investment Sales  
757.333.4383  
Joliver@Divaris.Com

The information contained herein should be considered confidential and remains the sole property of Divaris Real Estate, Inc. at all times. Although every effort has been made to ensure accuracy, no liability will be accepted for any errors or omissions. Disclosure of any information contained herein is prohibited except with the express written permission of Divaris Real Estate, Inc.