

FOR LEASE

3255 EAST WASHINGTON STREET
PHOENIX, ARIZONA 85034



FREESTANDING INDUSTRIAL BUILDING

5,891 SQUARE FOOT FREESTANDING BUILDING

22,169 SQUARE FOOT LOT

Reception, Showroom, Conference Room, 8 Offices, Kitchen, 3 Restrooms

Fenced Yard

A-1 Zoning, City of Phoenix

400 Amps, 120/208 V, 3 Phase Power

10' X 10' & 14' X 10' Loading Doors

Grade Level Loading

8' x 8' Commercial Sign

Easy Access to I-10, I-17, Loop 202, & Sky Harbor Airport

On The Light Rail

Washington Street Frontage, Corner Lot

\$1.15 PSF + NNN

Chad Neppi

Senior Vice President

602.695.4909

cneppi@citywidecre.com

Joe Cryan

Senior Associate

602.770.7769

joe@citywidecre.com

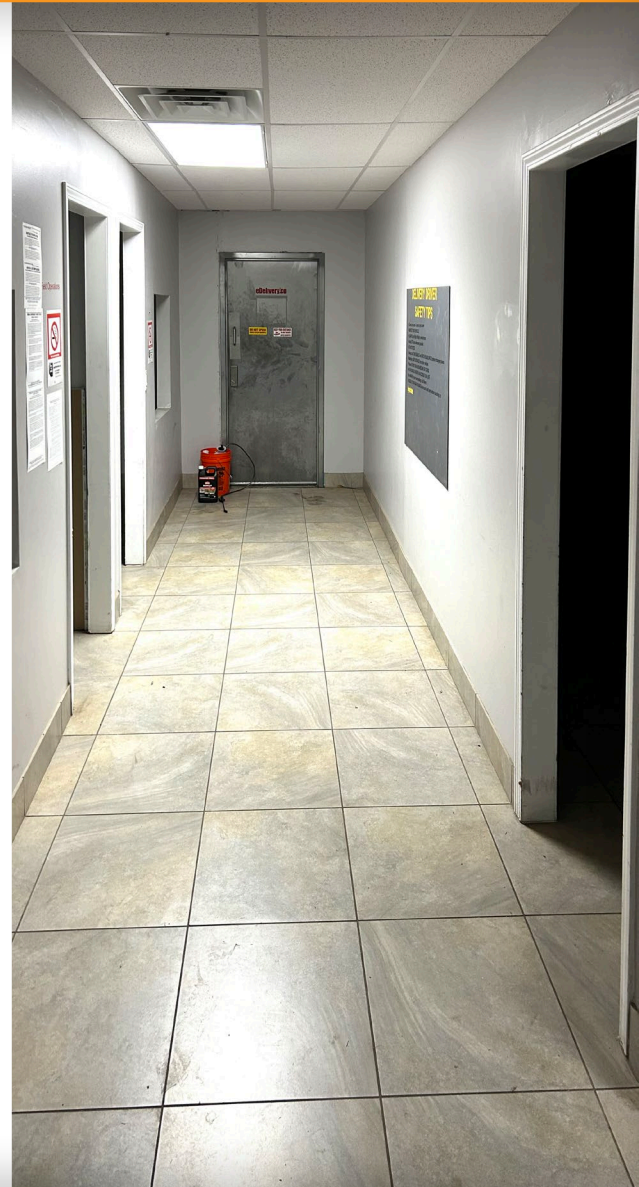
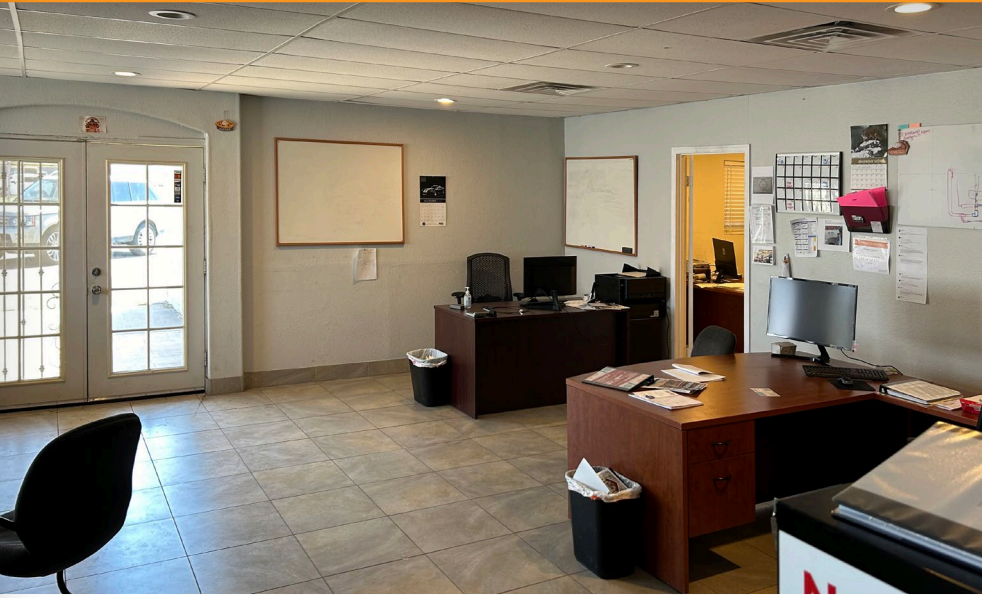


2122 EAST HIGHLAND AVENUE, SUITE 225 • PHOENIX, ARIZONA 85016 • 602.313.1000 • CITYWIDECRE.COM

All information furnished is from sources deemed reliable. No representation is made as to the accuracy thereof and it is submitted subject to errors, omissions, changes, or withdrawal without notice and to any special listings conditions, including the rate and manner of payment of commissions for particular offerings imposed by principals or agreed to by the company, the terms of which are available to interested principals or brokers. All dimensions are approximate. Owner and/or Broker make no representations expressed or implied as to the accuracy of floor plan/site plan dimensions.

FOR LEASE

3255 EAST WASHINGTON STREET
PHOENIX, ARIZONA 85034



Chad Neppi
Senior Vice President
602.695.4909
cneppi@citywidecre.com

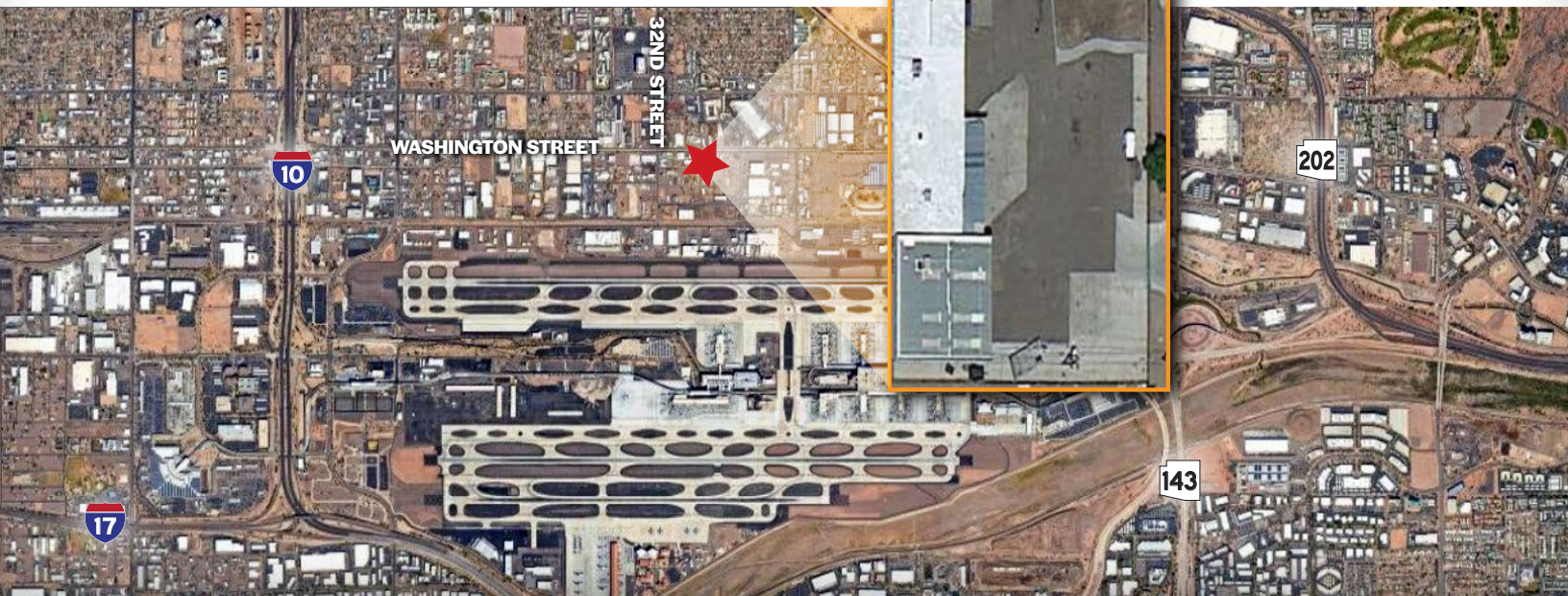
Joe Cryan
Senior Associate
602.770.7769
joe@citywidecre.com



2122 EAST HIGHLAND AVENUE, SUITE 225 • PHOENIX, ARIZONA 85016 • 602.313.1000 • CITYWIDECRE.COM

FOR LEASE

3255 EAST WASHINGTON STREET
PHOENIX, ARIZONA 85034



Chad Nepl

Senior Vice President
602.695.4909
cnepl@citywidecre.com

Joe Cryan

Senior Associate
602.770.7769
joe@citywidecre.com



2122 EAST HIGHLAND AVENUE, SUITE 225 • PHOENIX, ARIZONA 85016 • 602.313.1000 • CITYWIDECRE.COM