



For Lease

Steve Hooker
work: 435.649.1129
cell/text: 801.509.3560

Tim Anker
435.655.5661

Holiday Village

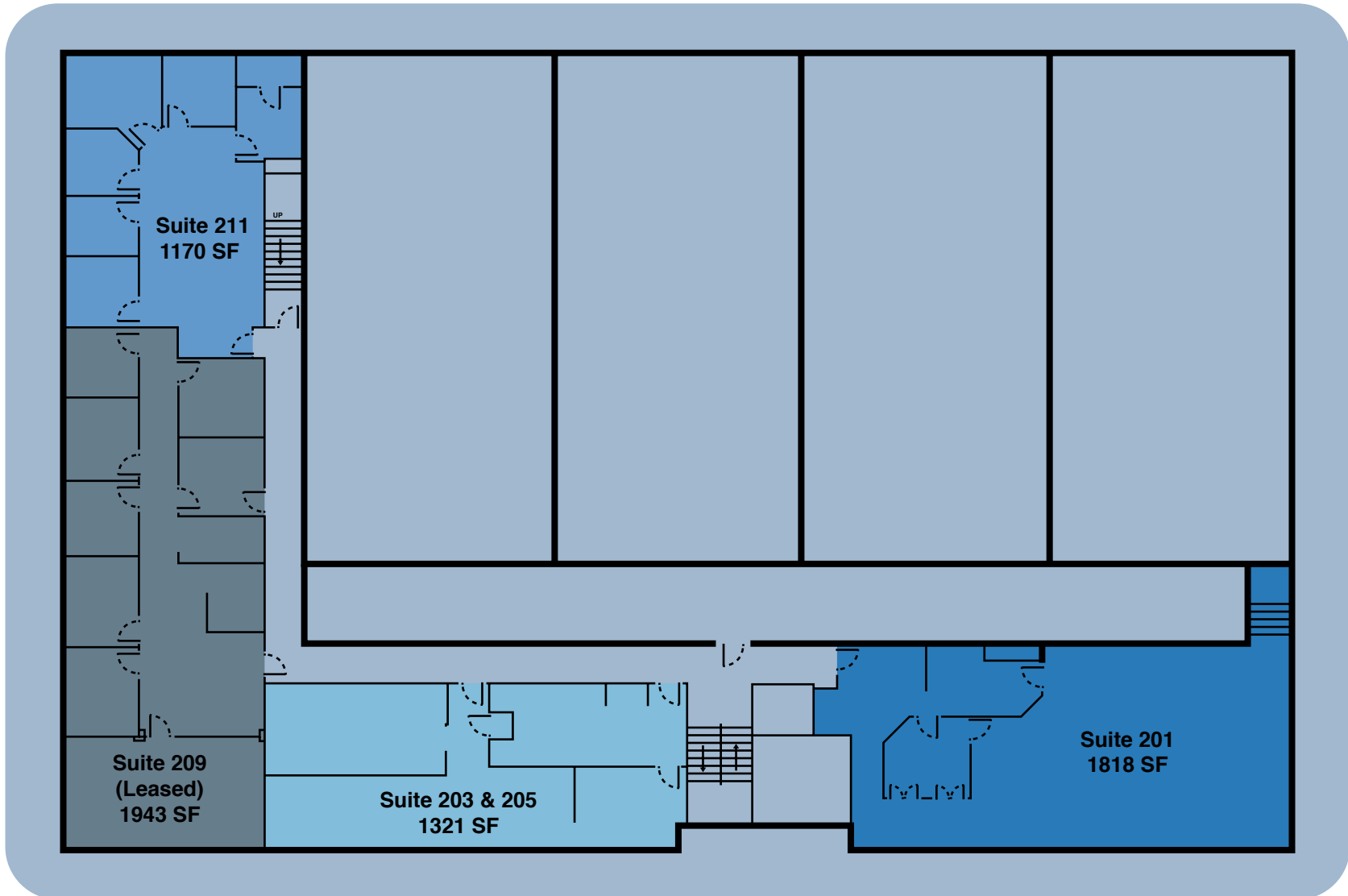


PROPERTY INFORMATION

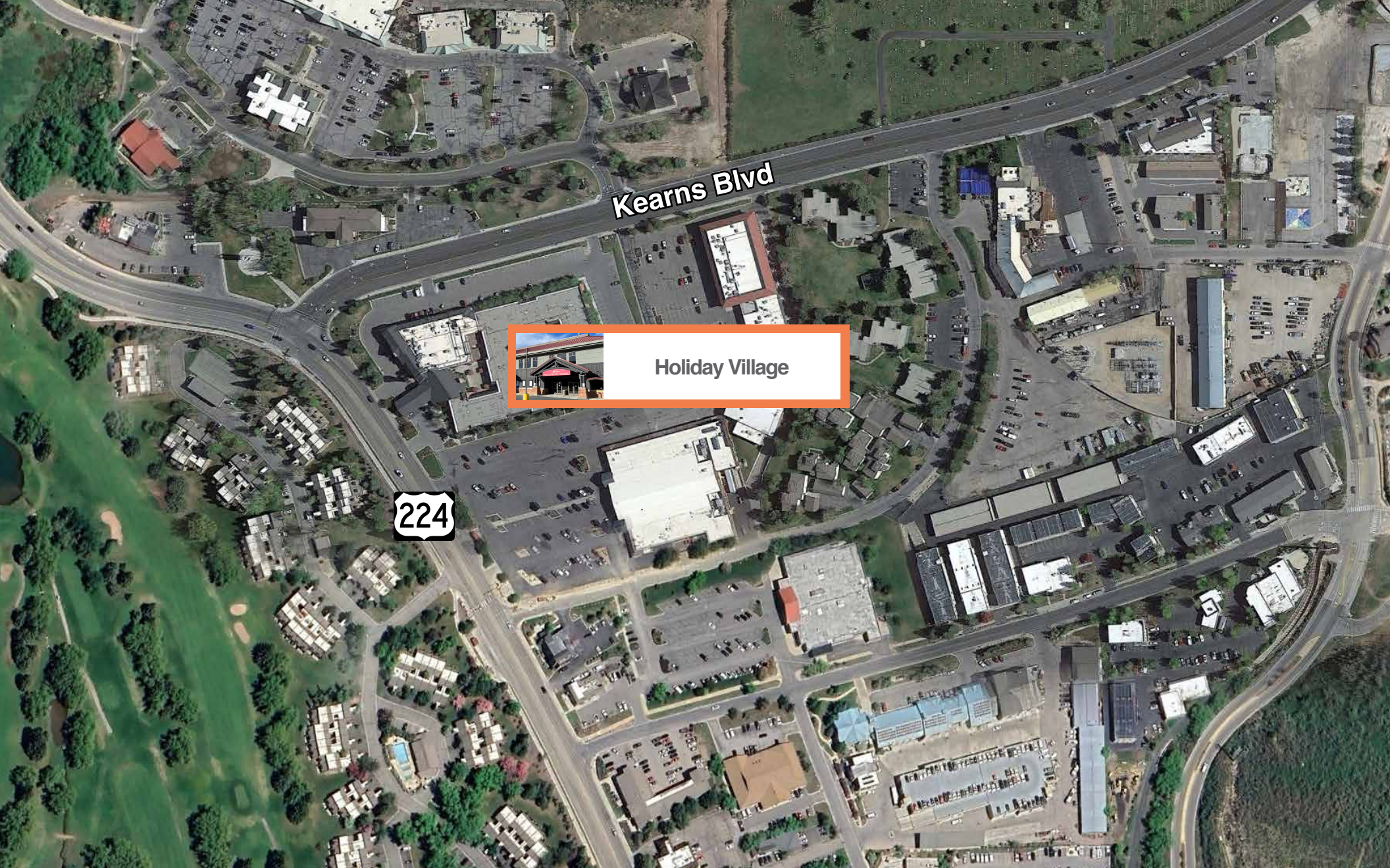
- 1776-1780 Park Ave, Park City, 84060
- Suites 201, 203 & 205, and 211 available for lease
- \$25.00 NNN
- 1,524 - 5,842 SF Available
- Major office and retail center in the heart of Park City
- Close to resorts, shops, restaurants, and Main Street with plenty of parking.



2750 Rasmussen Road, Suite 100, Park City, UT
Steve Hooker | 435.649.1129 | shooker@acme-cre.com
Tim Anker | 435.655.5661 | tanker@acme-cre.com
acme commercial real estate



2750 Rasmussen Road, Suite 100, Park City, UT
Steve Hooker | 435.649.1129 | shooker@acme-cre.com
Tim Anker | 435.655.5661 | tanker@acme-cre.com
acme commercial real estate



2750 Rasmussen Road, Suite 100, Park City, UT
Steve Hooker | 435.649.1129 | shooker@acme-cre.com
Tim Anker | 435.655.5661 | tanker@acme-cre.com
acme commercial real estate

Acme Commercial Real Estate Copyright 2023. No warranty or representation, express or implied, is made to the accuracy or completeness of the information contained herein, and same is submitted subject to errors, omissions, change of price, rental or other conditions, withdrawal without notice, and to any special listing conditions imposed by the property owner(s). As applicable, we make no representation as to the condition of the property (or properties) in question.