

MATERIAL SYMBOL KEY

[Symbol]	ACOUSTICAL CEILING
[Symbol]	BATT/LOOSE INSULATION
[Symbol]	RIGID INSULATION
[Symbol]	BLOCKING ROUGH LUMBER
[Symbol]	CONCRETE
[Symbol]	FINISHED WOOD
[Symbol]	GYPSUM WALLBOARD
[Symbol]	CONCRETE BLOCK
[Symbol]	PLYWOOD
[Symbol]	STEEL
[Symbol]	STEEL STUD PARTITION
[Symbol]	RATED PARTITION

SYMBOL KEY

[Symbol]	SECTION LETTER SHEET NUMBER
[Symbol]	DETAIL OR SECTION NUMBER SHEET NUMBER
[Symbol]	KEY TO DOOR SCHEDULE
[Symbol]	KEY TO WINDOW SCHEDULE
[Symbol]	ROOM NUMBER
[Symbol]	PARTITION TYPES
[Symbol]	COLUMN and GRID NUMBER
[Symbol]	VERTICAL ELEVATION

ABBREVIATIONS

A.F.F.	ABOVE FINISH FLOOR	IN.	INCHES
ATT.	ATTACHED	INT.	INTERIOR
ALUM.	ALUMINUM	INSUL.	INSULATION
BLDG	BUILDING	LB	POUND
BLK	BLOCK	MAX.	MAXIMUM
BLKG	BLOCKING	MECH.	MECHANICAL
C.J.	CONTROL JOINT	MFR	MANUFACTURER
CL	CENTER LINE	MIN.	MINIMUM
CLG	CEILING	MISC.	MISCELLANEOUS
CONC.	CONCRETE	M.O.	MASONRY OPENING
CONT.	CONTINUOUS	NO.	NUMBER
DIA	DIAMETER	N.I.C.	NOT IN CONTRACT
DWG	DRAWING	N.T.S.	NOT TO SCALE
EA.	EACH	O.C.	ON CENTER
ELEV.	ELEVATION	OPNG	OPENING
ELEC.	ELECTRIC, ELECTRICAL	PLYWD	PLYWOOD
EQ.	EQUAL	P.S.F.	POUNDS PER SQUARE FOOT
EQUIP.	EQUIPMENT	P.S.I.	POUNDS PER SQUARE INCH
EXP. JT	EXPANSION JOINT	REINF.	REINFORCE
EXT.	EXTERIOR	REQ'D	REQUIRED
F.D.	FLOOR DRAIN	RM	ROOM
FIN.	FINISH	SIM.	SIMILAR
FL.	FLOOR	SPECS	SPECIFICATIONS
GA	GAUGE	SQ.FT.	SQUARE FOOT
GALVD	GALVANIZED	SUSP.	SUSPENDED
G.B.	GYPSUM BOARD	THK	THICK
G.C.	GENERAL CONTRACTOR	TYP.	TYPICAL
HGT	HEIGHT	W/	WITH
H.M.	HOLLOW METAL	W/O	WITH OUT
		WD	WOOD
		W.W.F.	WELDED WIRE FABRIC

USE

ASSEMBLY: GROUP A-2 (RESTAURANTS AND SIMILAR DINING FACILITIES)

OCCUPANCY

ASSEMBLY WITHOUT FIXED SEATS
20'x 80' = 1,600 S.F. BALCONY AREA / 15 S.F. (UNCONTRATED TABLES & CHAIRS)
PER OCCUPANT = 106 MAXIMUM OCCUPANTS.

EGRESS REQUIREMENTS :

106 OCCUPANTS x 0.30" PER OCCUPANT = 48" WIDE STAIRWAY REQUIRED (1005.3.1)
FOR ONE STORY ABOVE GRADE. ACTUAL STAIRWAY IS 54" WIDE.

GENERAL NOTES FOR P.T. DECK CONSTRUCTION:

BUILDING CODE: 2015 VIRGINIA CONSTRUCTION CODE, & LOUISA COUNTY, VA TYPICAL DECK DETAILS.

ALL FOOTING CONCRETE TO BE 3000 PSI OR GREATER.

THE SOIL CAPACITY IS ASSUMED TO BE 1500 PSF MINIMUM.

ALL PORCH & DECK LUMBER SHALL BE SOUTHERN PINE, GRADE 2 OR BETTER AND SHALL BE PRESSURE TREATED IN ACCORDANCE WITH WOOD-PRESERVERS' ASSOCIATION STANDARD USE CATAGORY SYSTEM U1-11.

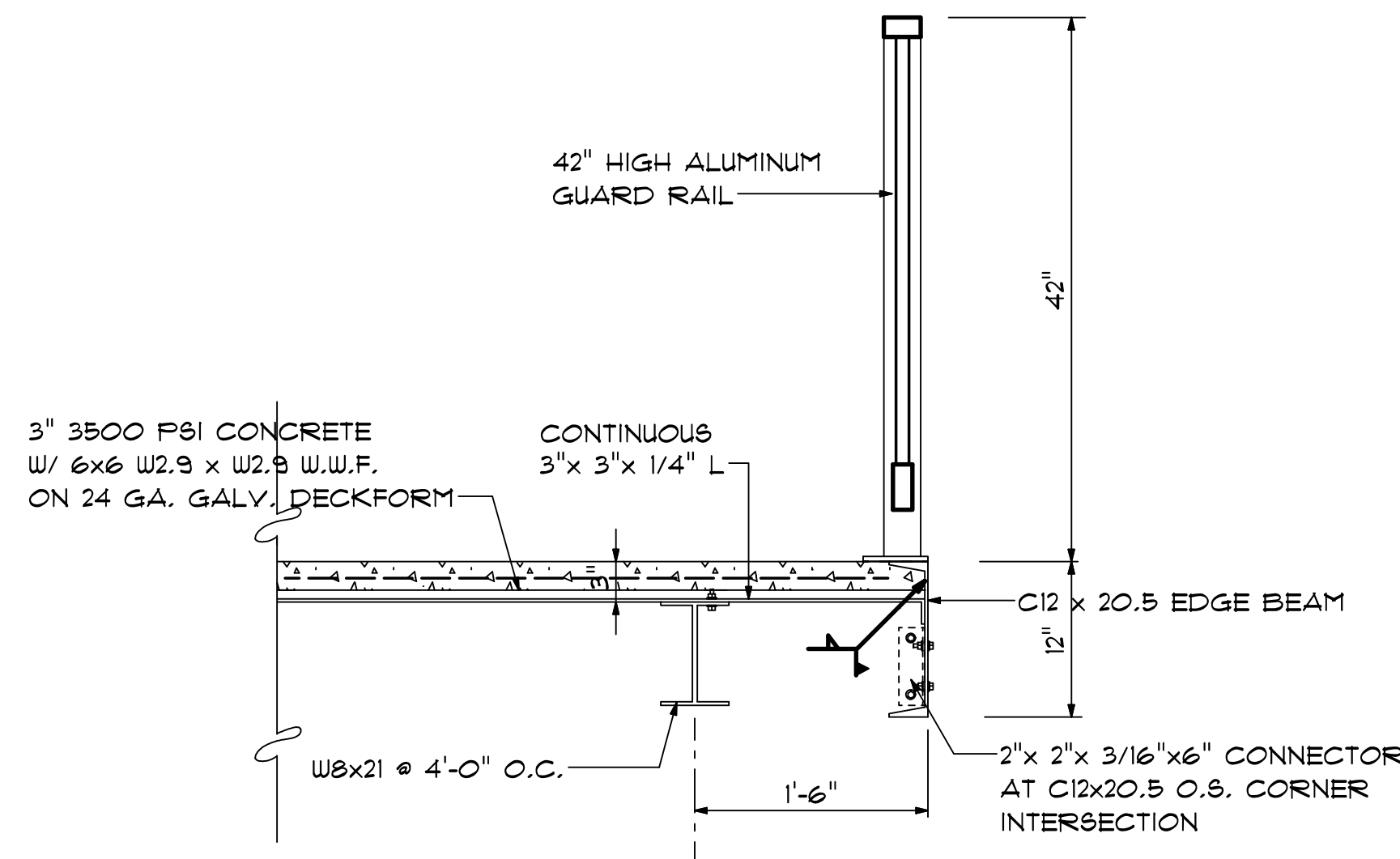
ALL NAILS SHALL BE SPIRAL OR ANNULAR GROOVED.

ALL SCREWS AND NAILS SHALL BE HOT-DIPPED GALVANIZED OR STAINLESS STEEL.

ALL HARDWARE SHALL BE GALVANIZED WITH 1.85 OZ/SF OF ZINC (G-185 COATING) OR SHALL BE STAINLESS STEEL.

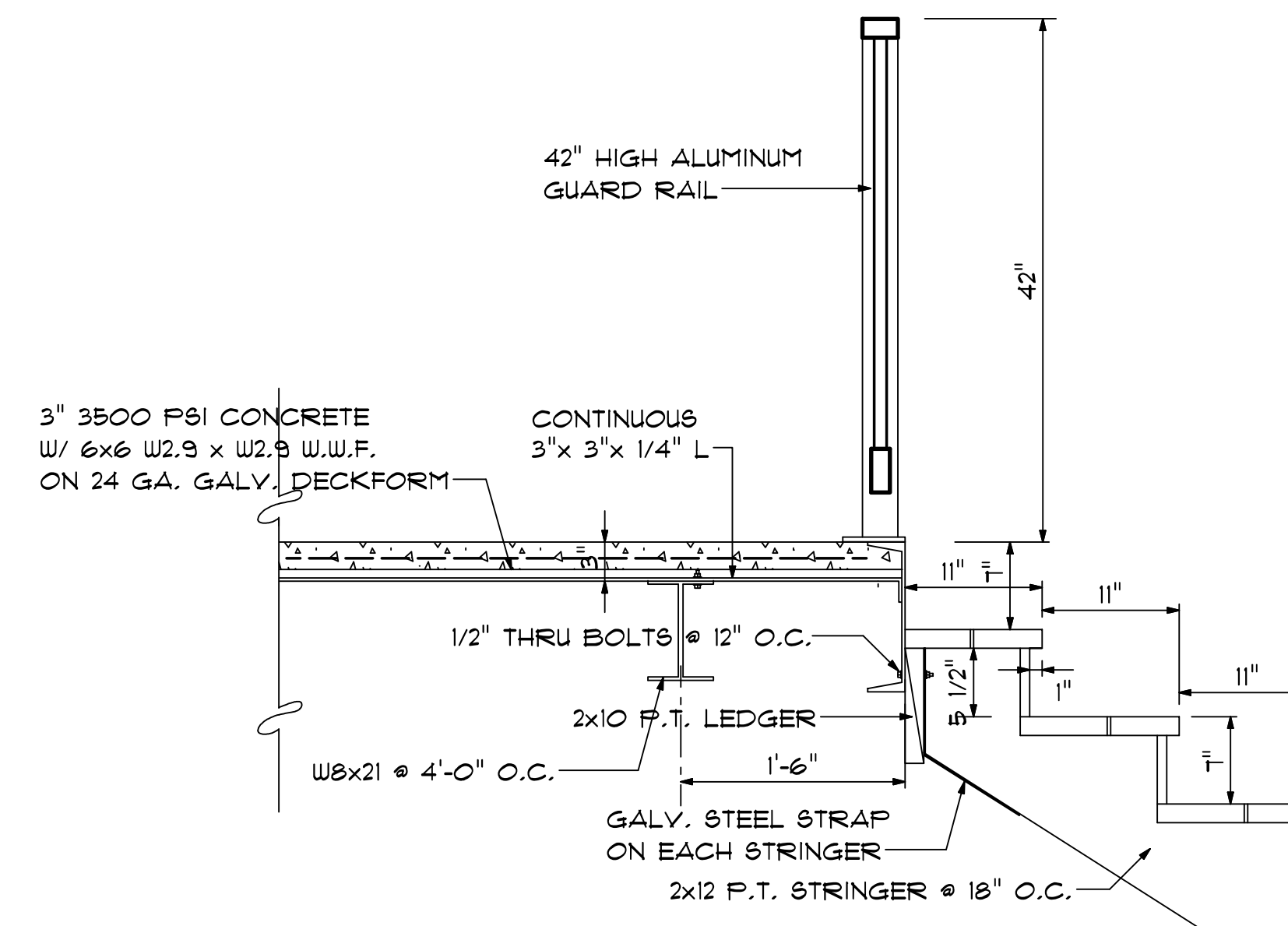
ALL P.T. DECKING SHALL BE 2X6 OR 5/4" BOARDS AND ATTACHED WITH 2-8d NAILS OR 2-#8 SCREWS.

DO NOT USE ALUMINUM FOR FLASHING ADJACENT TO DECK LUMBER.



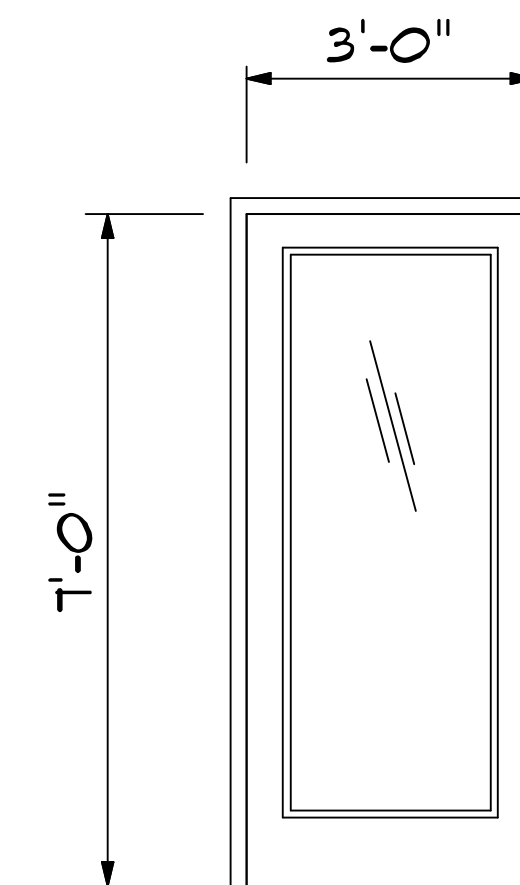
SECTION "A"

1" = 1'-0"



SECTION "C"

1" = 1'-0"



DOOR ELEVATION #1

1/2" = 1'-0"

GEORGE E. WIEBER, ARCHITECT

562 LAKE CAROLINE DRIVE,
RUTHER GLEN, VIRGINIA 22546
(804) 512-1440

FUTURE DINING BALCONY PLANS FOR:

LAKE ANNA BEACH RESORT, LLC

349 PLEASANT LANDING ROAD
BUMPASS, VIRGINIA 23024

SCALE: AS NOTED

PROJECT # 20215

A701

DWG NO.

DRAWN BY: RTW

REVISIONS

DATE: 3/2/2021