



500 N Kimball Ave

500 N Kimball Ave, Southlake, TX 76092



Tim Lancaster

TLC Realty, Inc.

4100 Heritage Ave, Suite 105, Grapevine, TX 76051

tim@tlcrealtygrapevine.com

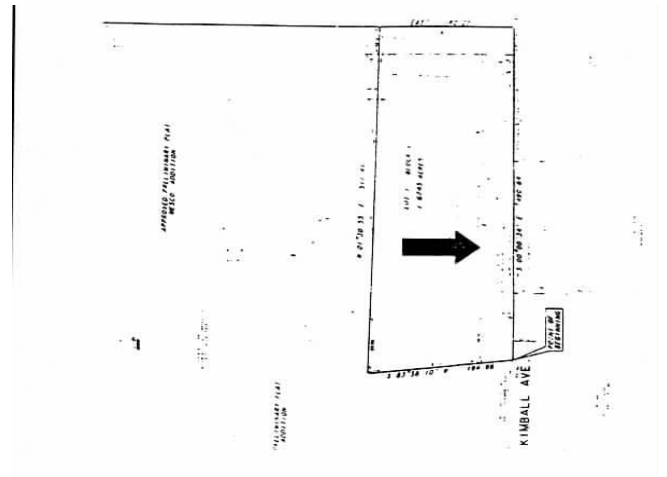
(817) 358-8600 Ext: 22



500 N Kimball Ave

\$18.00 /SF/YR

1500 sf in Light Industrial Strip Center 1150 ofc and 350 warehouse. Zoned Light Industrial in Southlake TX. No automobile repair, no smoke shop, no retail. Service businesses or E commerce. NOT TRUCK FRIENDLY. Light parking in front and rear....



Rental Rate:	\$18.00 /SF/YR
Property Type:	Flex
Property Subtype:	Showroom
Building Class:	C
Rentable Building Area:	24,000 SF
Year Built:	1984
Taxes:	\$0.13 USD/SF/MO
Operating Expenses:	\$0.29 USD/SF/MO
Rental Rate Mo:	\$1.50 /SF/MO

1

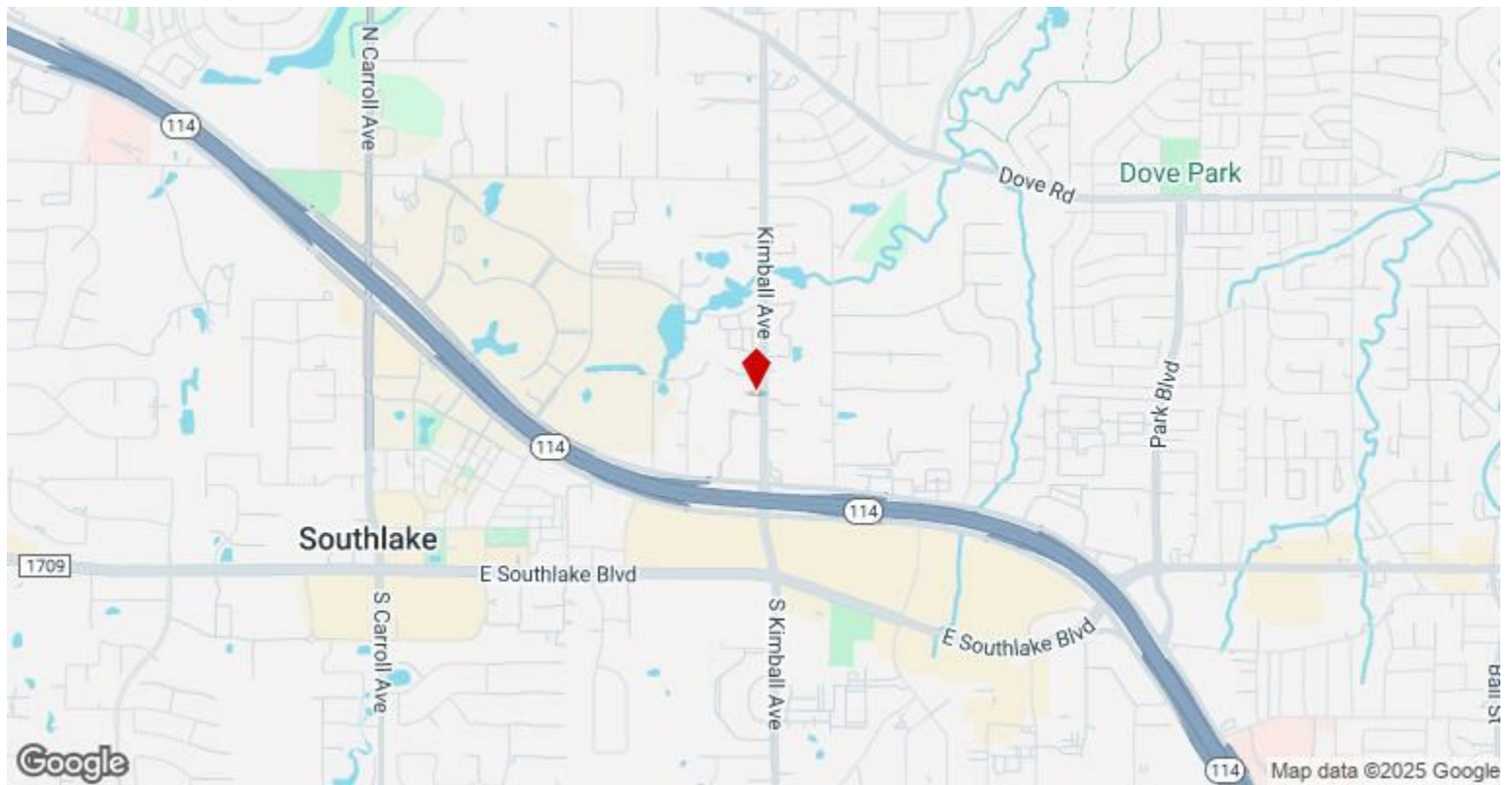
1st Floor Ste 106

Space Available	1,500 SF
Rental Rate	\$18.00 /SF/YR
Date Available	Now
Service Type	Modified Gross
Office Size	1,150 SF
Space Type	Relet
Space Use	Flex
Lease Term	1 - 2 Years

1500 sf with 1150 Office and 350 warehouse one overhead door One private office and two large open area \$2250 per month plus Electric. Zoned Light industrial in Southlake.NO AUTOMOBILE repair. No Smoke shop or Retail.

Major Tenant Information

Tenant	SF Occupied	Lease Expired
All Safe Pest & Termite	-	
Bespoke	-	April 2023
Charmaine Wynter Interiors Inc	-	December 2021
Custom Media, inc	-	
Daniel Electric Co	-	
Eastgate Flooring	-	January 2021
Gold Blade Fencing Center	-	June 2012
Laundry 2 Go Cleaners	-	
Metroplex Pools	-	
Taylor G, Inc	-	June 2021



500 N Kimball Ave, Southlake, TX 76092

1500 sf in Light Industrial Strip Center 1150 ofc and 350 warehouse. Zoned Light Industrial in Southlake TX. No automobile repair, no smoke shop, no retail.
Service businesses or E commerce. NOT TRUCK FRIENDLY. Light parking in front and rear.

Property Photos



Property Photos



Building Photo



Interior Photo

Property Photos



