

# 103-105

MACDOUGAL STREET  
GREENWICH VILLAGE, NYC

Between Bleecker Street & Minetta Lane

FLAGSHIP RESTAURANT FOR LEASE

## APPROXIMATE SIZE

Ground Floor: 7,000 SF  
Lower Level: 5,000 SF

<b>ASKING RENT</b>	<b>POSSESSION</b>	<b>TERM</b>
\$120 PSF	Arranged	15 Years

<b>FRONTAGE</b>	<b>SIZE</b>
50 FT	50 x 135 FT

## COMMENTS

- Turn-key newly built-out restaurant
- Fully vented kitchen with brand-new equipment
- Seats over 300 guests
- 24/7 foot traffic
- Notable restaurants surrounding
- Flag pole signage opportunity
- 2 separate 50 FT wide entrances
- No key-money

## NEIGHBORS

Minetta Tavern • Off The Wagon • Kazu Nori •  
Carbone • Crumbl Cookies • Hancock Street  
• Jack's Wife Frida • Figaro • Il Mulino • Figure  
Eight • Palma • Silver Apricot • Bar Pitti • Dante

## TRANSPORTATION

A C E B D F M

## JAMES FAMULARO

President  
646.658.7373  
jfamularo@meridiancapital.com



PROPERTY INFORMATION

# 103-105 MACDOUGAL STREET

GREENWICH VILLAGE, NYC | Between Bleecker Street and Minetta Lane

## FLAGSHIP RESTAURANT FOR LEASE



INTERIOR

### JAMES FAMULARO

President  
646.658.7373  
jfamularo@meridiancapital.com



All information supplied is from sources deemed reliable and is furnished subject to errors, omissions, modifications, removal of the listing from sale or lease, and to any listing conditions, including the rates and manner of payment of commissions for particular offerings imposed by Meridian Capital Group. This information may include estimates and projections prepared by Meridian Capital Group with respect to future events, and these future events may or may not actually occur. Such estimates and projections reflect various assumptions concerning anticipated results. While Meridian Capital Group believes these assumptions are reasonable, there can be no assurance that any of these estimates and projections will be correct. Therefore, actual results may vary materially from these estimates and projections. Any square footage dimensions set forth are approximate.

# 103-105 MACDOUGAL STREET

GREENWICH VILLAGE, NYC | Between Bleecker Street and Minetta Lane

## FLAGSHIP RESTAURANT FOR LEASE



INTERIOR

### JAMES FAMULARO

President

646.658.7373

[jfamularo@meridiancapital.com](mailto:jfamularo@meridiancapital.com)

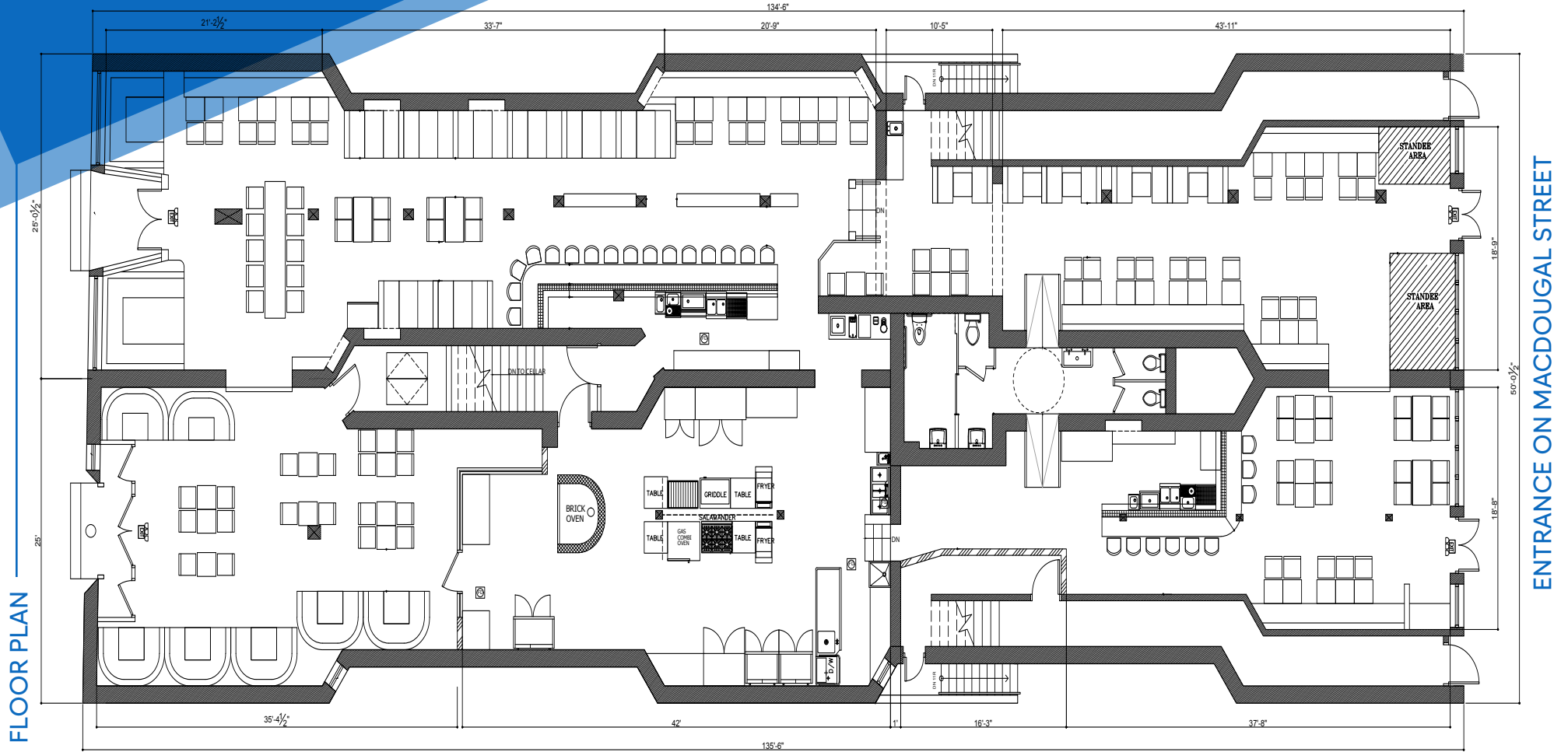


All information supplied is from sources deemed reliable and is furnished subject to errors, omissions, modifications, removal of the listing from sale or lease, and to any listing conditions, including the rates and manner of payment of commissions for particular offerings imposed by Meridian Capital Group. This information may include estimates and projections prepared by Meridian Capital Group with respect to future events, and these future events may or may not actually occur. Such estimates and projections reflect various assumptions concerning anticipated results. While Meridian Capital Group believes these assumptions are reasonable, there can be no assurance that any of these estimates and projections will be correct. Therefore, actual results may vary materially from these estimates and projections. Any square footage dimensions set forth are approximate.

# 103-105 MACDOUGAL STREET

GREENWICH VILLAGE, NYC | Between Bleecker Street and Minetta Lane

FLAGSHIP RESTAURANT FOR LEASE



FLOOR PLAN

ENTRANCE ON MACDOUGAL STREET

JAMES FAMULARO

President  
646.658.7373  
jfamularo@meridiancapital.com



All information supplied is from sources deemed reliable and is furnished subject to errors, omissions, modifications, removal of the listing from sale or lease, and to any listing conditions, including the rates and manner of payment of commissions for particular offerings imposed by Meridian Capital Group. This information may include estimates and projections prepared by Meridian Capital Group with respect to future events, and these future events may or may not actually occur. Such estimates and projections reflect various assumptions concerning anticipated results. While Meridian Capital Group believes these assumptions are reasonable, there can be no assurance that any of these estimates and projections will be correct. Therefore, actual results may vary materially from these estimates and projections. Any square footage dimensions set forth are approximate.

# 103-105 MACDOUGAL STREET

GREENWICH VILLAGE, NYC | Between Bleecker Street and Minetta Lane

## FLAGSHIP RESTAURANT FOR LEASE

A detailed map of the Greenwich Village neighborhood in NYC, centered on 103-105 MacDougal Street. The map shows a grid of streets including Cornelia Street, Carmine Street, Sixth Avenue, Sullivan Street, Thompson Street, Bleecker Street, and Hancock Street. A blue callout bubble highlights the address 103-105 MacDougal Street. The map is populated with logos for various nearby businesses, primarily restaurants and cafes, such as Le GigoT, IFC Center, Ben's Pizzeria, La Boheme Restaurant, Minetta Lane Theatre, and many others. The area is marked as a prime location for a flagship restaurant lease.

103-105  
MACDOUGAL  
STREET

NEIGHBORS

**JAMES FAMULARO**

President  
646.658.7373  
jfamularo@meridiancapital.com

**MERIDIAN**  
RETAIL LEASING

All information supplied is from sources deemed reliable and is furnished subject to errors, omissions, modifications, removal of the listing from sale or lease, and to any listing conditions, including the rates and manner of payment of commissions for particular offerings imposed by Meridian Capital Group. This information may include estimates and projections prepared by Meridian Capital Group with respect to future events, and these future events may or may not actually occur. Such estimates and projections reflect various assumptions concerning anticipated results. While Meridian Capital Group believes these assumptions are reasonable, there can be no assurance that any of these estimates and projections will be correct. Therefore, actual results may vary materially from these estimates and projections. Any square footage dimensions set forth are approximate.