

OFFICE/MEDICAL/DENTAL

6800-6830 MONTGOMERY, ALBUQUERQUE, NM 87109

FOR
LEASE



LANDLORD WILL PROVIDE
NEW OFFICE BUILDOUT

30 Years
OF SERVICE
1994 - 2024

LEASE

» **Rate:** Call Broker For Pricing

6800 Montgomery
Suite G - 1,353 ±RSF

6830 Montgomery
Suite B&C - 3,153 ±RSF

Renovations

» Landscaping, Building Facia
Monument Signage

FEATURES

- » Prominent Montgomery frontage
- » Campus setting with excellent parking
- » Walking distance to multiple restaurants
- » Under floor plumbing access
- » Building signage available

CONTACT

STACEY NENNINGER, CCIM

✉ stacey@argusinvestmentrealty.com

☎ 505.855.7608

SCOTT THROCKMORTON, SIOR

✉ scott@argusinvestmentrealty.com

☎ 505.855.7602

FOR LEASE | 6800-6830 MONTGOMERY, ALBUQUERQUE NM 87109

ARGUSINVESTMENTREALTY.COM



OFFICE/MEDICAL/DENTAL

SITE OVERVIEW

FOR
LEASE



FOR LEASE | 6800-6830 MONTGOMERY, ALBUQUERQUE NM 87109

ARGUSINVESTMENTREALTY.COM



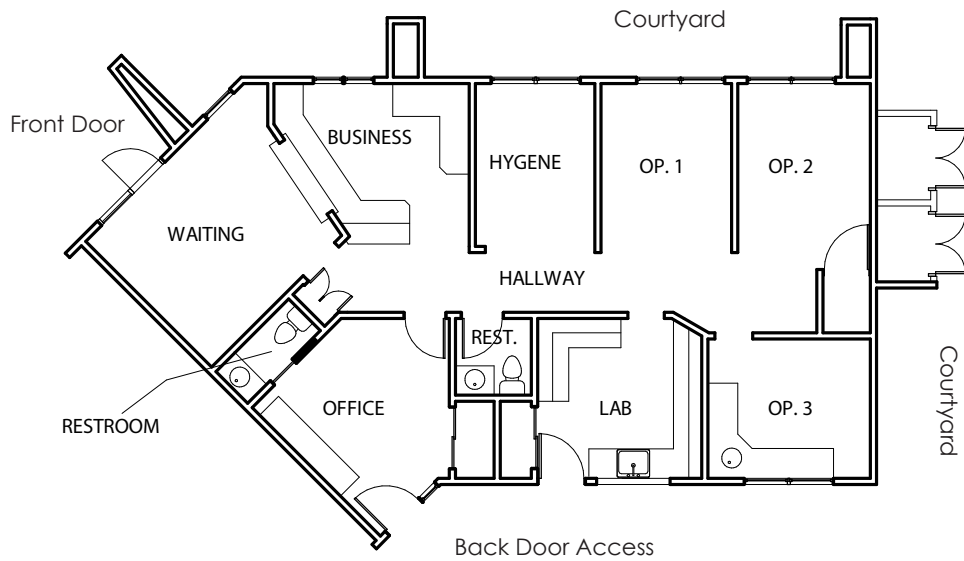
OFFICE/MEDICAL/DENTAL

FLOOR PLANS

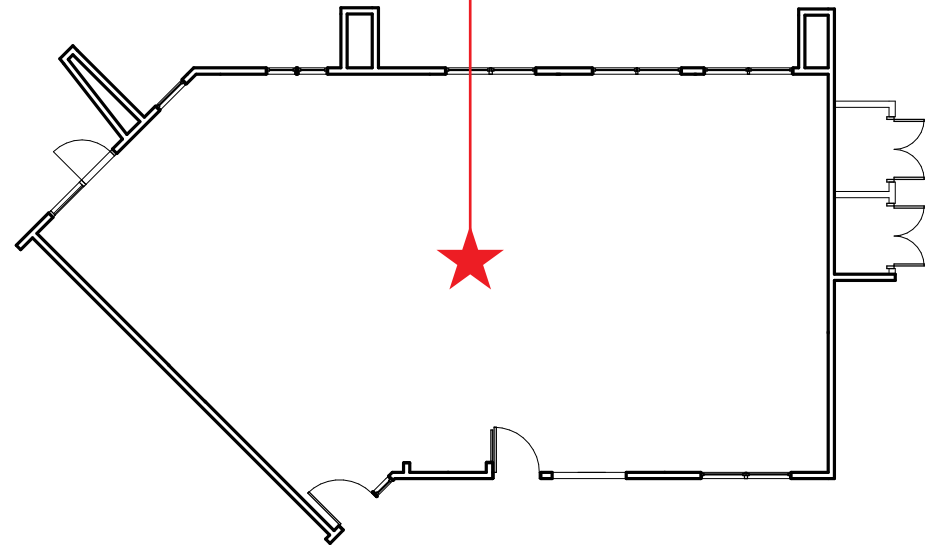
FOR
LEASE

6800 Montgomery
Suite G - 1,353 ±RSF

As Built



Landlord will build out
space to suit your needs



FOR LEASE | 6800-6830 MONTGOMERY, ALBUQUERQUE NM 87109

ARGUSINVESTMENTREALTY.COM

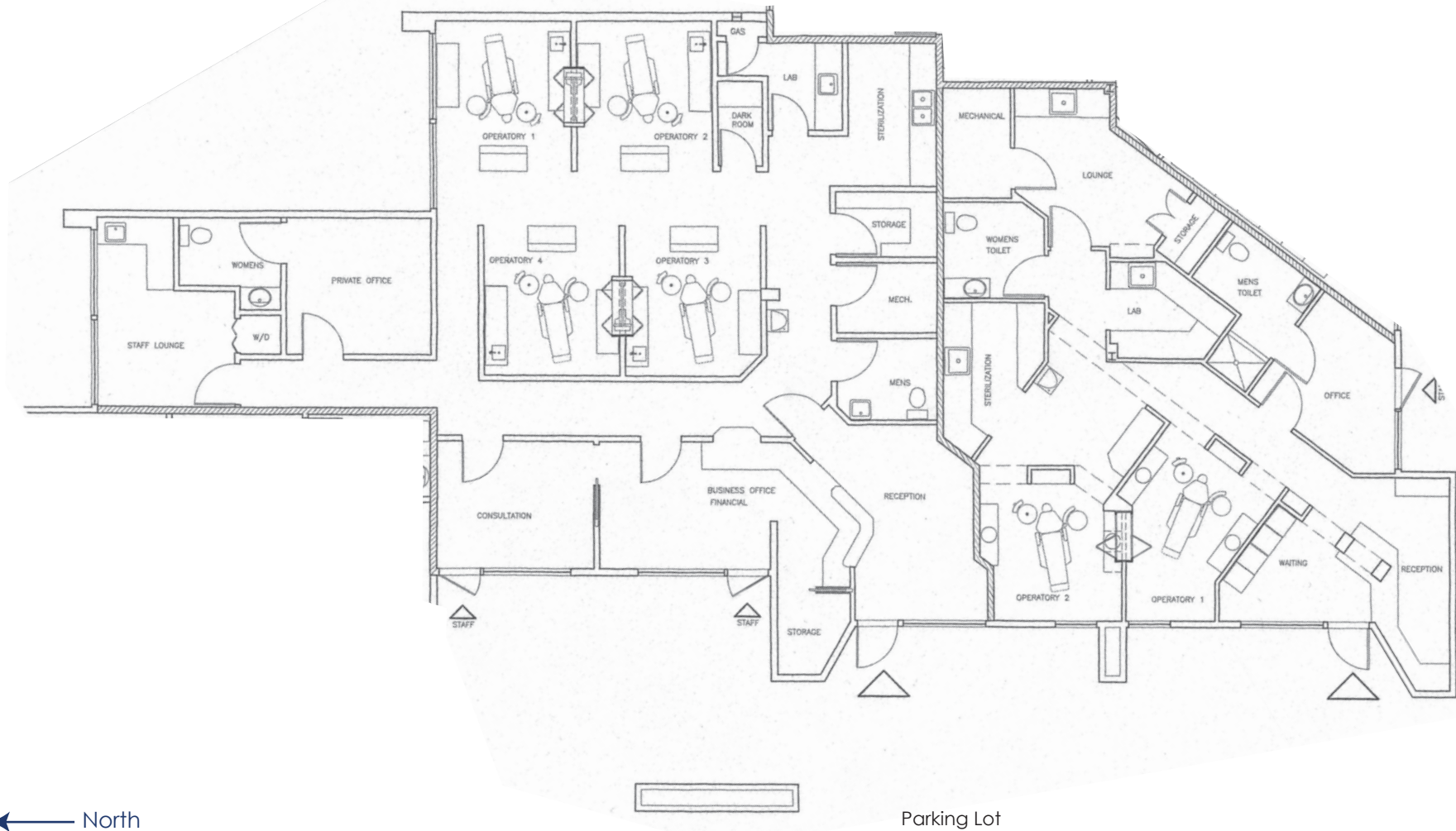


OFFICE/MEDICAL/DENTAL

FLOOR PLANS

FOR
LEASE

6830 Montgomery
Suite B&C - 3,153 ±RSF



← North

Parking Lot

FOR LEASE | 6800-6830 MONTGOMERY, ALBUQUERQUE NM 87109

ARGUSINVESTMENTREALTY.COM



OFFICE/MEDICAL/DENTAL

AREA OVERVIEW

FOR
LEASE



FOR LEASE | 6800-6830 MONTGOMERY, ALBUQUERQUE NM 87109

ARGUSINVESTMENTREALTY.COM



OFFICE/MEDICAL/DENTAL

AERIAL

FOR
LEASE



FOR LEASE | 6800-6830 MONTGOMERY, ALBUQUERQUE NM 87109

ARGUSINVESTMENTREALTY.COM



OFFICE/MEDICAL/DENTAL

DRIVE TIME DEMOGRAPHICS

FOR
LEASE



5 MINUTE DRIVE TIME



Population - 76,124



Avg HH Income - \$62,260



10 MINUTE DRIVE TIME



Population - 378,044



Avg HH Income - \$68,670



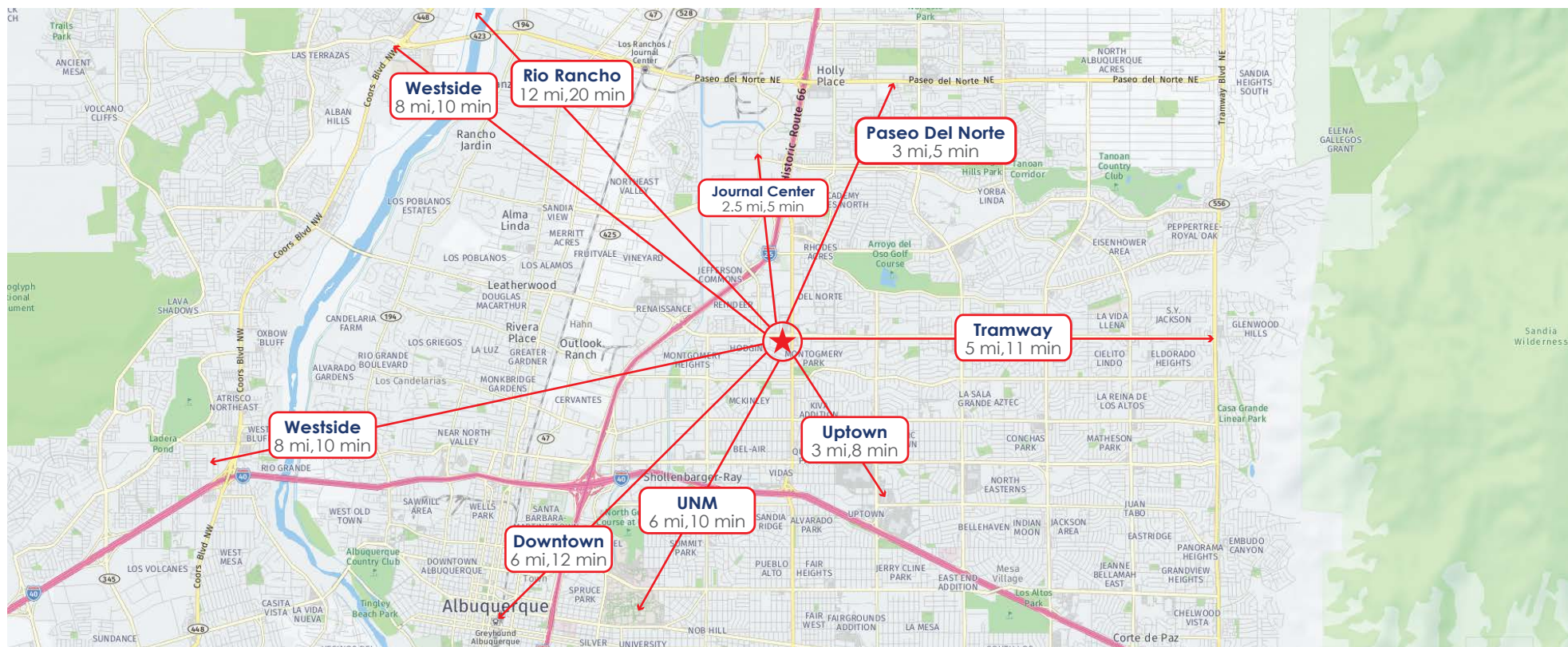
15 MINUTE DRIVE TIME



Population - 604,132



Avg HH Income - \$73,179



FOR LEASE | 6800-6830 MONTGOMERY, ALBUQUERQUE NM 87109

ARGUSINVESTMENTREALTY.COM

