

# RICE LAKE PLAZA

Space Available  
Maple Grove, MN

Weaver Lake Road & 83rd Way | Maple Grove, MN



Rice Lake Plaza offers an exceptional opportunity to lease space in a highly desirable and established area of Maple Grove. Ideally situated just off Weaver Lake Road, this well-positioned mixed-use development features a dynamic blend of street-level retail storefronts and professional second-floor office suites.

With 41,934 square feet of total space, Rice Lake Plaza is perfectly suited for retail, office, and medical office users seeking strong visibility, easy accessibility, and a thriving community atmosphere.





## Available For Lease

520 SF Office Space

- Negotiable Rates •
- TI's Available •
- Close proximity to Arbor Lakes, a major retail and entertainment area •
- High-traffic corridors and strong co-tenancy with national and regional brands •

Tour Today!

## Demographics

	1 - Mile	3 - Miles	5 - Miles
 Population	8,043	58,589	157,129
 Daytime Population	6,328	41,080	80,480
 Households	3,429	23,267	58,401
 Average HH Income	\$144,192	\$157,172	\$156,872

DATA SOURCE: STDB | ESRI

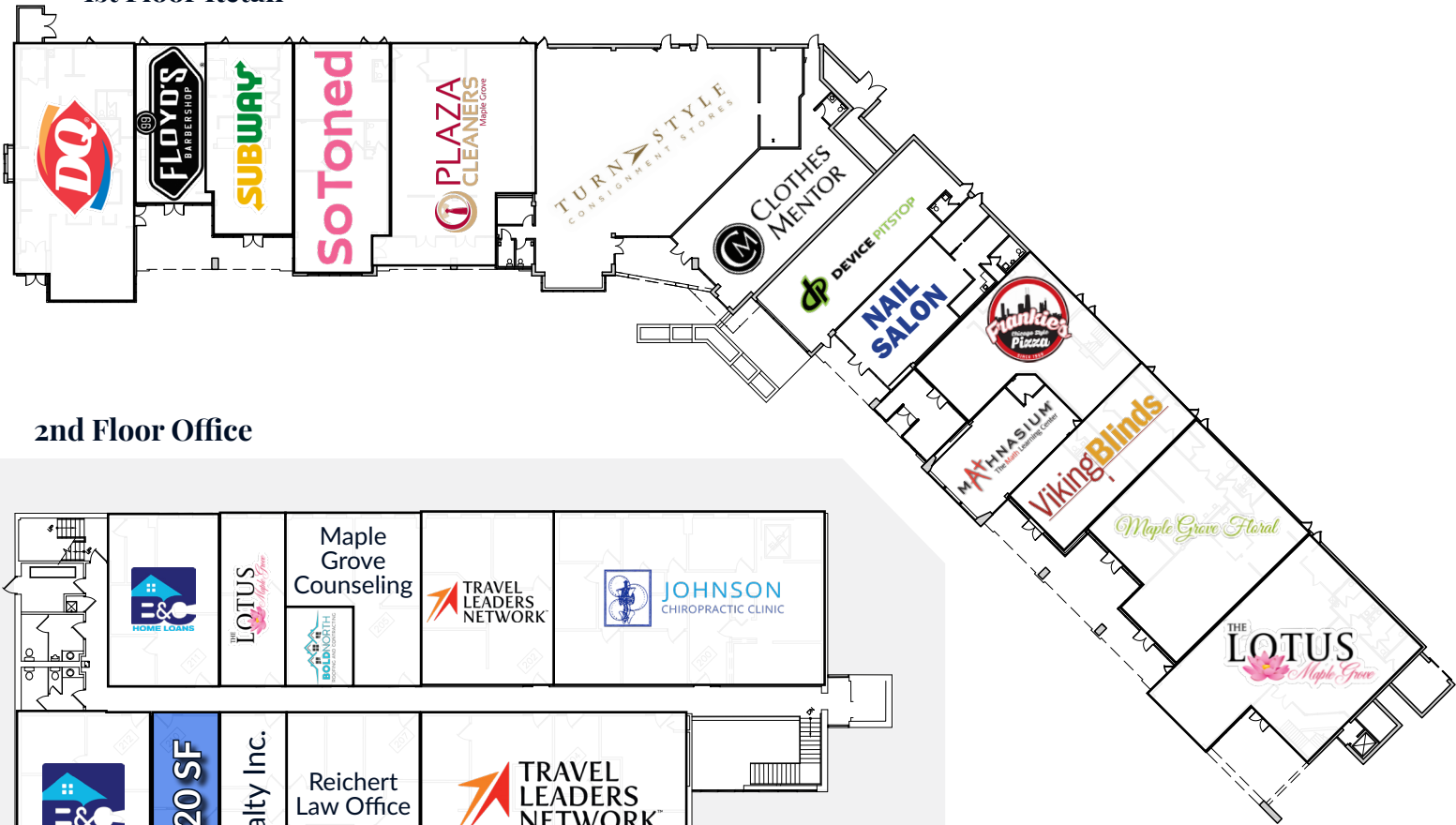
## Leasing Info

Brian Merz  
(763) 285-7235  
bmerz@hjdevelopment.com

hjdevelopment.com

 **hj development**

## 1st Floor Retail



## 2nd Floor Office

## Weaver Lake Road &amp; 83rd Way

## Sq. Ft.

## 1st Floor Retail

Lotus Restaurant	2,850
Maple Grove Floral	2,770
Viking Blinds	1,126
Mathnasium	1,249
Frankies Pizza	2,457
Beaute Contour	1,574
Device Pitstop	1,852
Clothes Mentor	2,092
Turn Style	5,053
Plaza Cleaners	2,697
SoToned	2,047
Subway	1,644
Floyd's 99	1,140
Dairy Queen	3,002

## Weaver Lake Road &amp; 83rd Way

## Sq. Ft.

## 2nd Floor Office

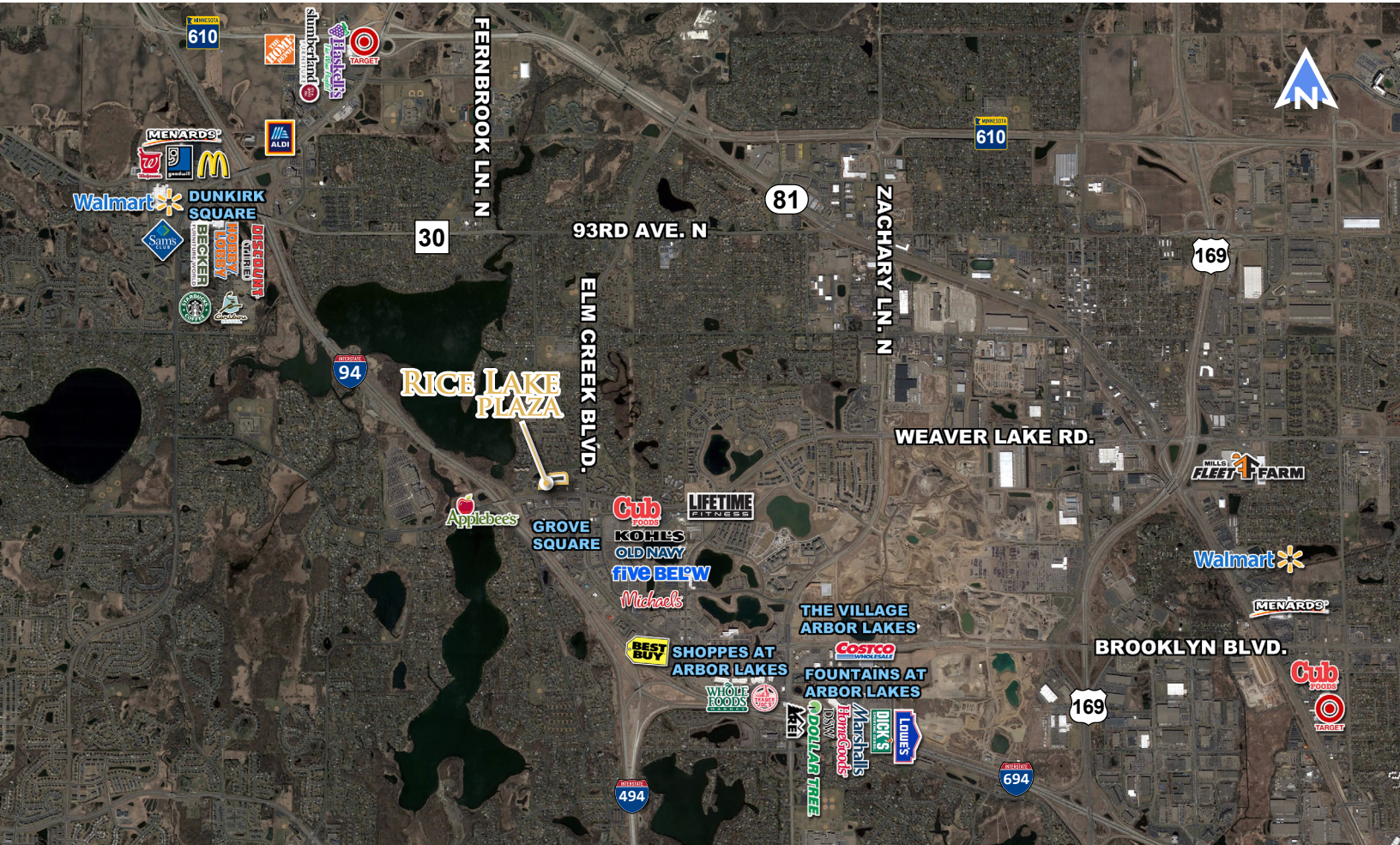
Johnson Chiro	1,600
Travel Leaders	1,024
Bold North	258
Travel Leaders	2,186
MG Counseling	773
Realty Inc.	522
Reichert Law	818
Lotus Office	514
B&C Home Loans	1,135
Vacant	520
B&C Home Loans	720





# Rice Lake Plaza

Weaver Lake Road & 83rd Way | Maple Grove, MN



**HJ** hj development

2655 Cheshire Lane North • Plymouth • MN • 55447 • [hjdevelopment.com](http://hjdevelopment.com)