

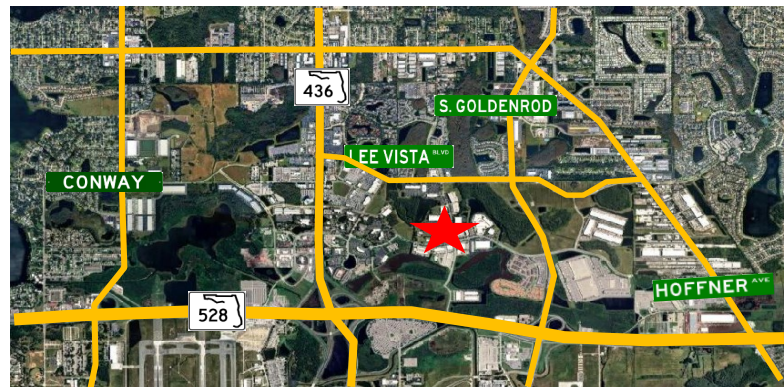


# FOR SALE

6457 Hazeltine National Dr, Unit 100,  
Orlando, FL 32822



<b>Asking Price:</b>	Call for details
<b>Unit #100:</b>	3,690 ± SF
<b>Warehouse:</b>	2,690 ± SF
<b>Office:</b>	500 ± SF
<b>Mezzanine Office:</b>	500 ± SF
<b>Ceiling Height:</b>	22'-24'
<b>Doors:</b>	(2) Dock High
<b>Power:</b>	3 Phase
<b>Parking:</b>	6 Reserved Sp.
<b>Year Built:</b>	2006



McNulty Group, Inc. is the agent of the Landlord or Seller of this property and will be paid by the Landlord or Seller. All information furnished with respect to the subject property has been obtained from sources deemed reliable. No representation as to accuracy thereof is made. This offering is subject to errors, omissions, prior sales or withdrawal without notice.

**Chuck McNulty**

Broker

Chuck@mcnultygroupinc.com

(407) 619-4245 Direct

**McNulty Group Inc.**

2315 Lynx Lane, Suite 6

Orlando, Florida 32804

407-532-3441



# FOR SALE

6457 Hazeltine National Dr, Unit 100,  
Orlando, FL 32822



**Chuck McNulty**

Broker

[Chuck@mcnultygroupinc.com](mailto:Chuck@mcnultygroupinc.com)

(407) 619-4245 Direct

[mcnultygroupinc.com](http://mcnultygroupinc.com)

**McNulty Group Inc.**

2315 Lynx Lane, Suite 6

Orlando, Florida 32804

407-532-3441