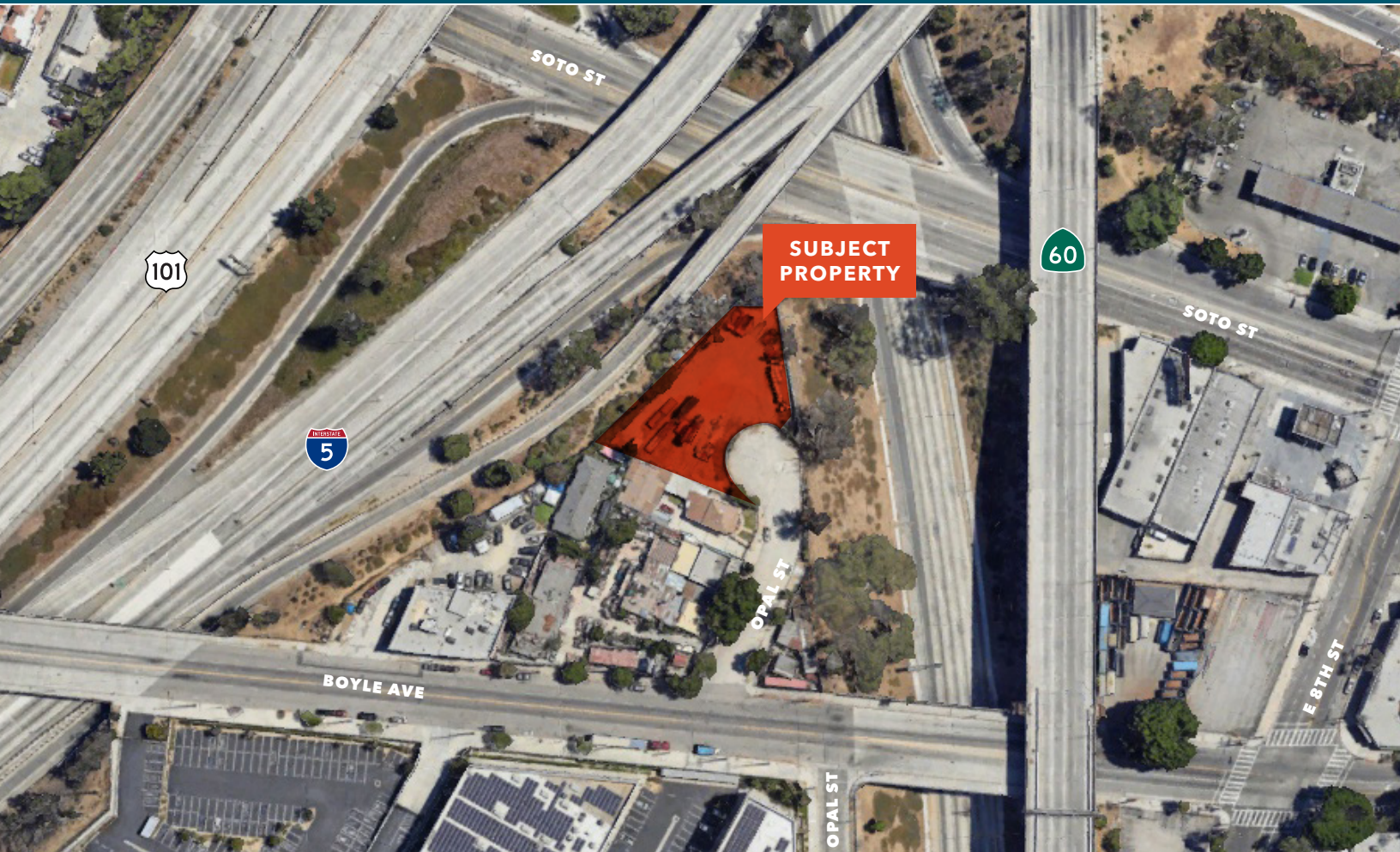




FOR LEASE

# 2321 E Opal St

LOS ANGELES, CA 90023



±17,870 SF Fully Fenced and Gated Industrial Yard

**NICK ARNST**

213.225.7226

[nick.arnst@kidder.com](mailto:nick.arnst@kidder.com)

LIC N° 01927768

**TOM WILLIAMS**

213.225.7229

[tom.williams@kidder.com](mailto:tom.williams@kidder.com)

LIC N° 01270201

**Kidder  
Mathews**

This information supplied herein is from sources we deem reliable. It is provided without any representation, warranty, or guarantee, expressed or implied as to its accuracy. Prospective Buyer or Tenant should conduct an independent investigation and verification of all matters deemed to be material, including, but not limited to, statements of income and expenses. Consult your attorney, accountant, or other professional advisor.

[KIDDER.COM](http://KIDDER.COM)



**FOR LEASE**

# 2321 E Opal St

LOS ANGELES, CA 90023

## Property Highlights

**LEASE RATE** \$12,000 per month or \$0.67 PSF Gross

**TERM** 1- 3 years

**TOTAL** space available 17,870 SF of land

**TRUCKING**, car parking or contractor's yard allowed

**EXCELLENT** access to 101/60/10/5 freeways

**FULLY** fenced and gated dirt lot

**AVAILABLE** December 1, 2024

**UTILITIES** not available

[> Virtual Tour](#)

**NICK ARNST**

213.225.7226

[nick.arnst@kidder.com](mailto:nick.arnst@kidder.com)

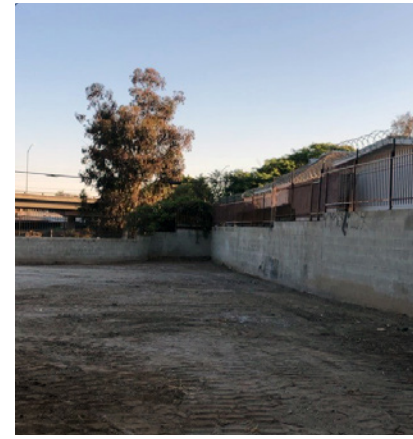
LIC N° 01927768

**TOM WILLIAMS**

213.225.7229

[tom.williams@kidder.com](mailto:tom.williams@kidder.com)

LIC N° 01270201



[KIDDER.COM](http://KIDDER.COM)

**km Kidder Mathews**

This information supplied herein is from sources we deem reliable. It is provided without any representation, warranty, or guarantee, expressed or implied as to its accuracy. Prospective Buyer or Tenant should conduct an independent investigation and verification of all matters deemed to be material, including, but not limited to, statements of income and expenses. Consult your attorney, accountant, or other professional advisor.