

AVAILABLE

4601 Nixon Park Drive

Syracuse, New York 13215



Warehouse Space & Land Available



15,474± SF & 62.6± Acres Available

Property Highlights

- 15,747± SF total available including 1,455± SF of office space
- Situated on 62.6± acres of industrial zoned land
- Ceiling height: 14' warehouse
- Power: 4000-amp service
- One 10'H overhead door
- Exterior loading platform
- Near Onondaga Community College, located just off Route 175



Contact

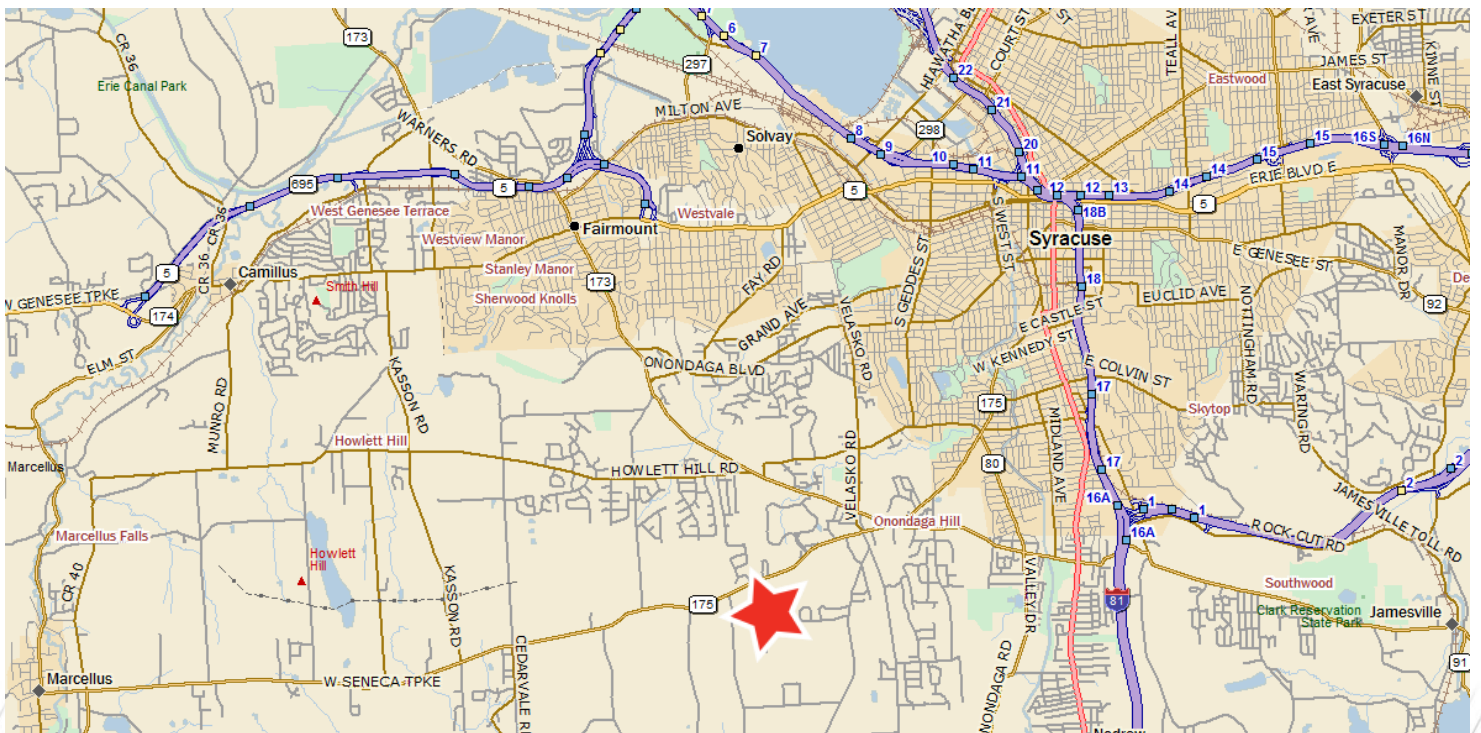
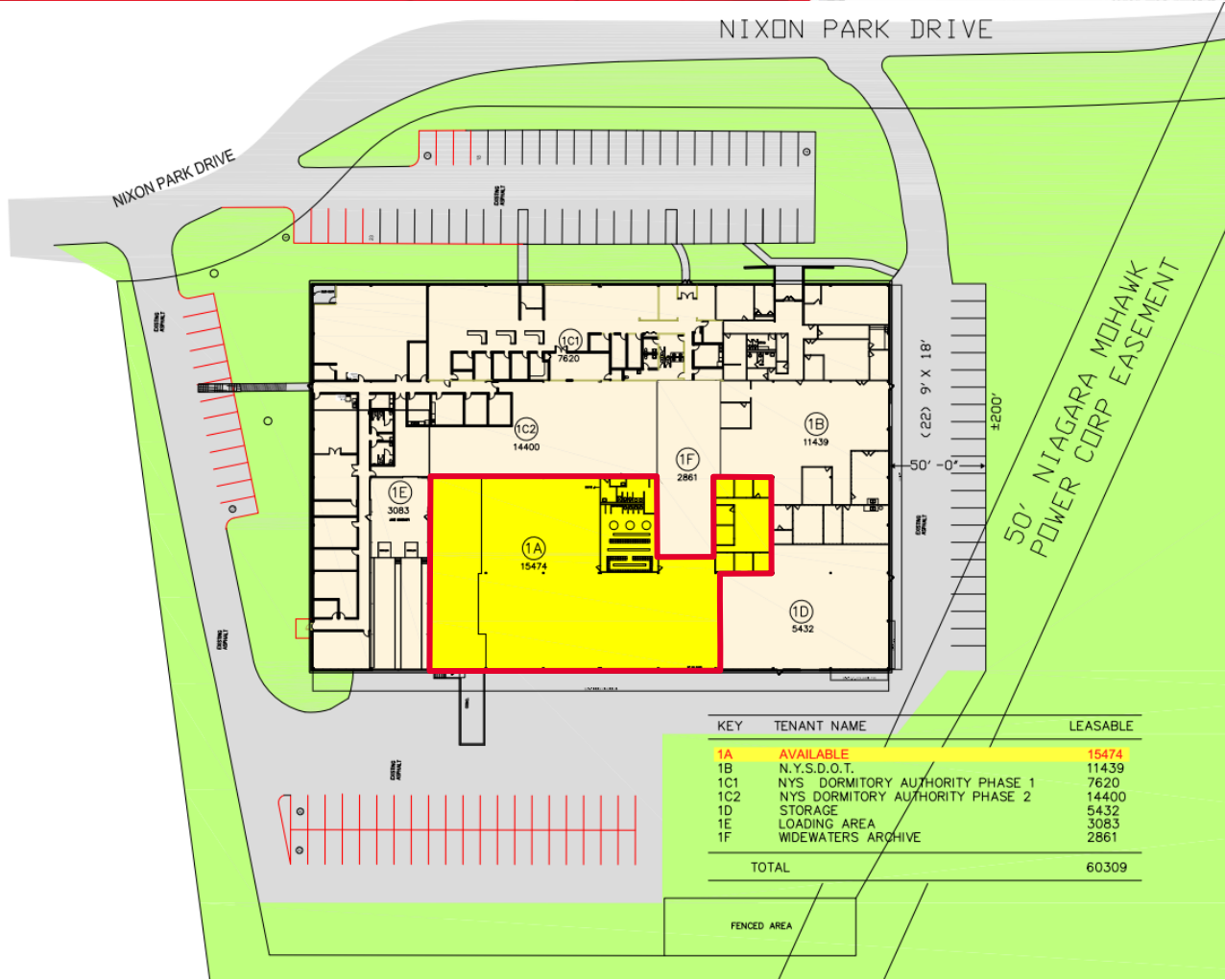
STEPHEN SCUDERI
Real Estate Salesperson
+1 315 445 8517
sscuderi@pyramidbrokerage.com

JOHN L. CLARK, SIOR, CRE
President, Real Estate Broker
+1 315 445 8509
jclark@pyramidbrokerage.com

5845 Widewaters Pkwy, Suite 200
East Syracuse, New York 13057
+1 315 445 1030
pyramidbrokerage.com

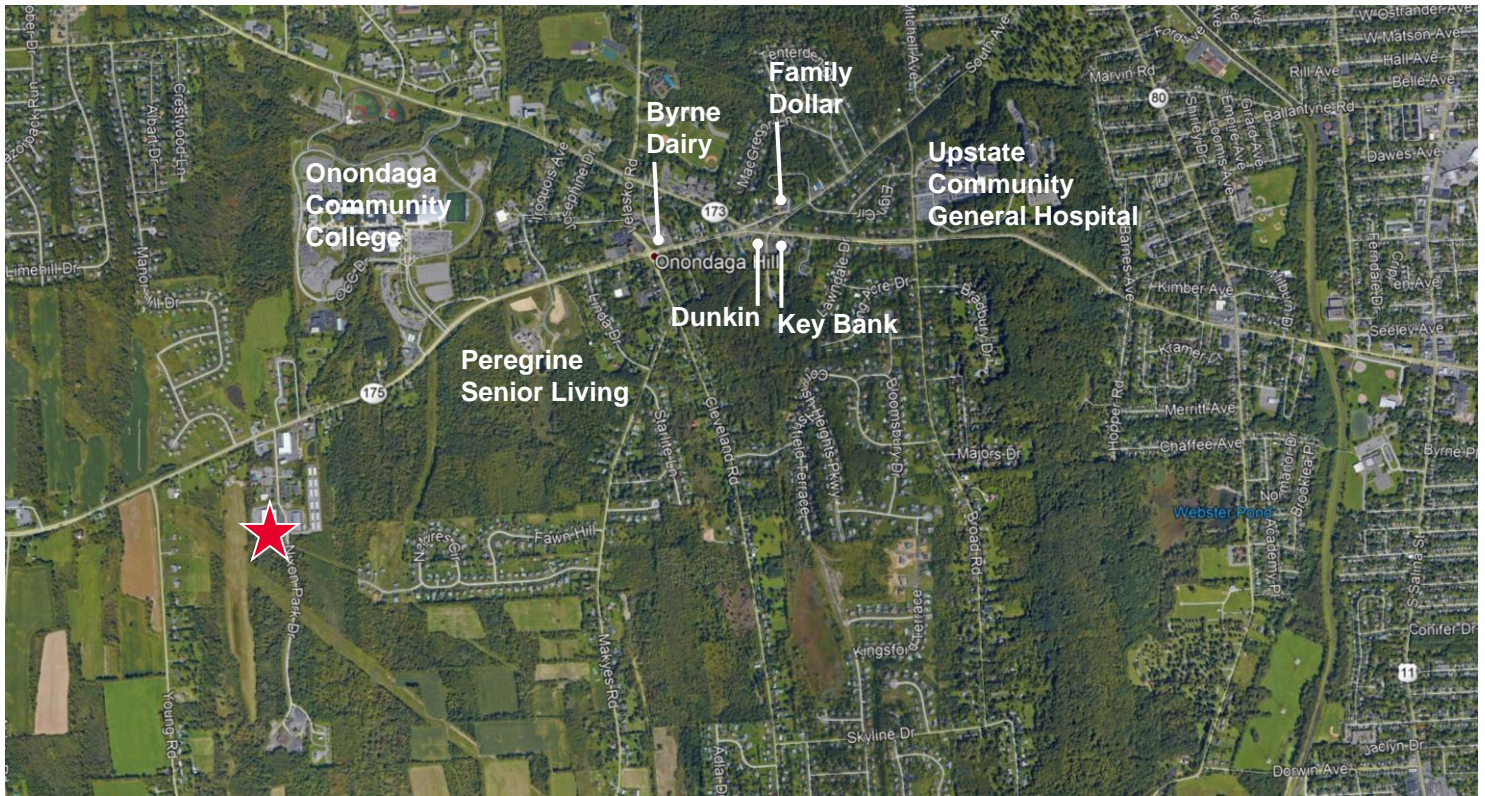
AVAILABLE

4601 Nixon Park Drive | Syracuse, New York



AVAILABLE

4601 Nixon Park Drive | Syracuse, New York



AVAILABLE

4601 Nixon Park Drive | Syracuse, New York

