

# FOR SALE

3131 Timberlake Drive  
Vestavia Hills, AL 35243



# Lightpoint

A Healthcare Real Estate Firm



## Offering Summary

**Offering Price:** \$400,000  
**Acreage:** 0.43 acres  
**Sq. footage:** ~18,730 sf  
**Zoning:** R-1

## Property Highlights

- Property is next to 0.54 acre parcel that can be combined for a total of 0.97 acres
- Property is located in between the Colonnade/Patchwork Farms developments
- Property is in the developing area of the Colonnade
- Accessible from 280
- Located right off Blue Lake Drive

**Kyle Church**

c: 205.919.1528

e: [kyle@lightpointcre.com](mailto:kyle@lightpointcre.com)



## Your Legacy Awaits

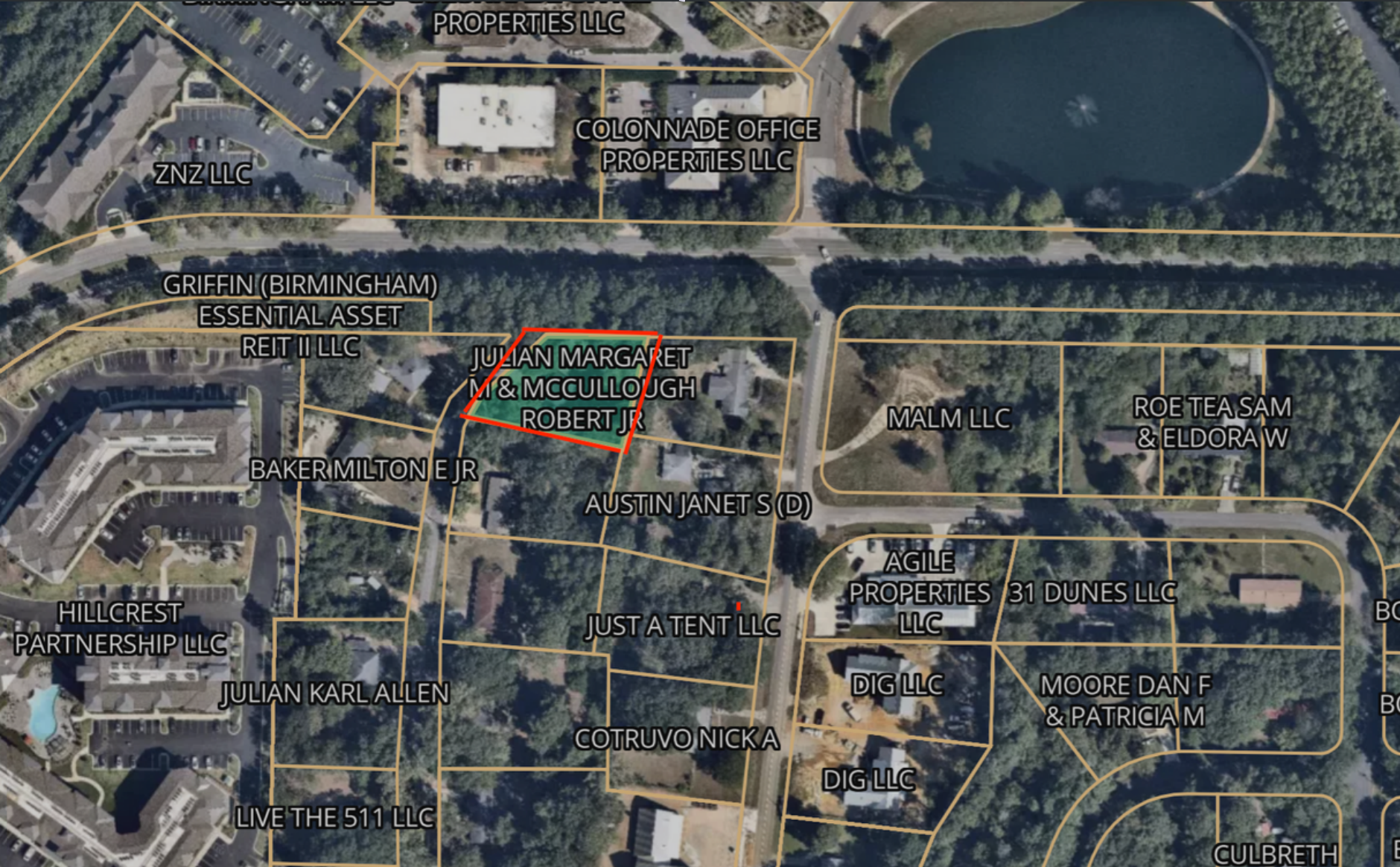
# FOR SALE

3131 Timberlake Drive  
Vestavia Hills, AL 35243



# Lightpoint

A Healthcare Real Estate Firm



**Kyle Church** | c: 205.919.1528 | e: [kyle@lightpointcre.com](mailto:kyle@lightpointcre.com)