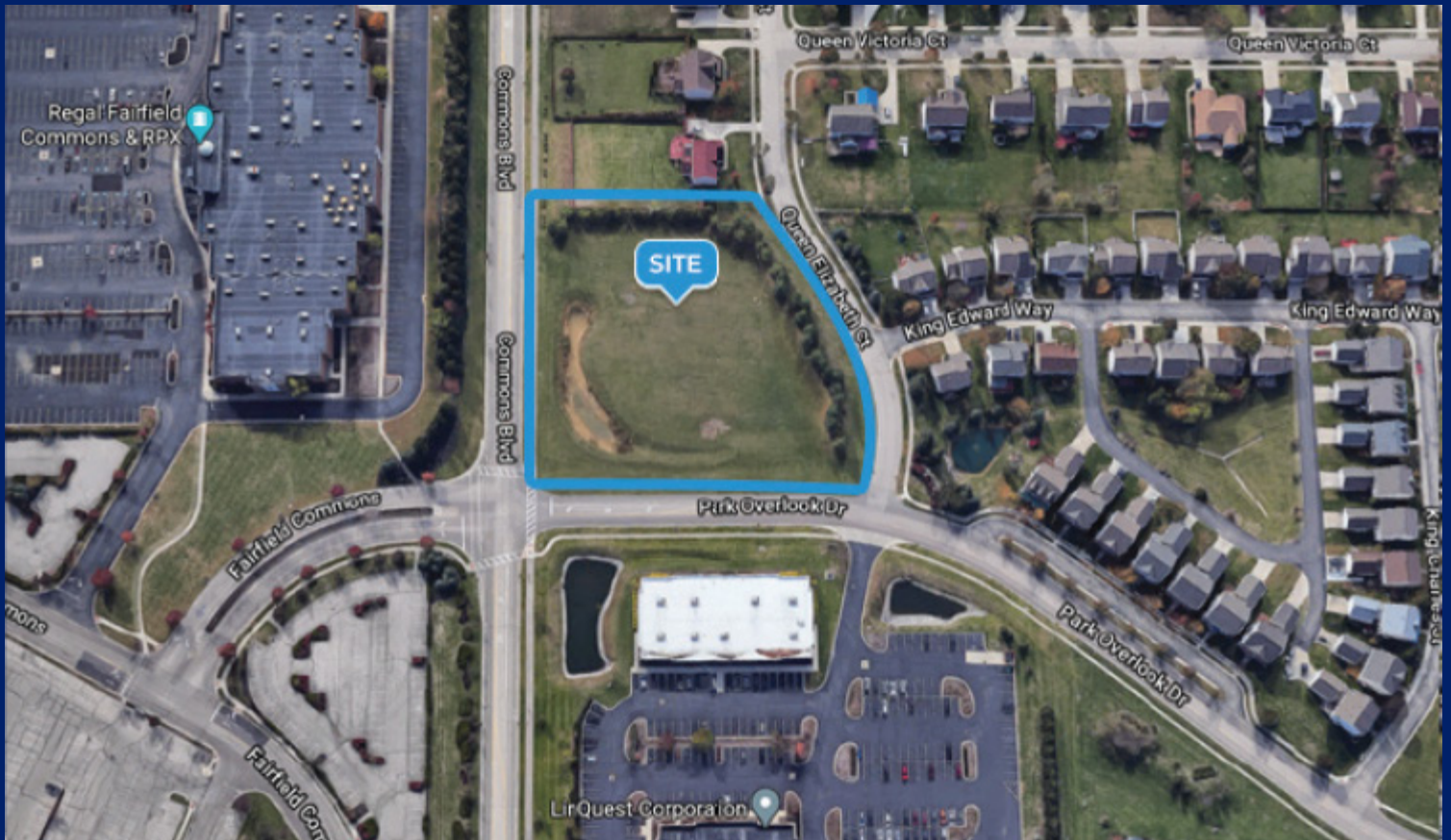




THE
PAUL HOWE
GROUP

FOR SALE

2 Acres Along Common Blvd, Beavercreek OH 45431



PROPERTY HIGHLIGHTS:

- A total of 2.076 acres AVAILABLE
- The property is strategically located at the SW corner of Commons Blvd & Park Overlook Dr.
- Extremely close to the large selection of fine retail, services and restaurants
- ZONED R-PUD 97-3
- EXCELLENT ACCESSIBILITY from I-675 and The Mall at Fairfield Commons (67k vpd)
- Beavercreek, the largest city in Greene County, Ohio, the second largest suburb in the Dayton market and less than ten miles from downtown Dayton. It is considered to be among the most attractive, dynamic and desirable locations in the Dayton area, with an outstanding quality of life

Contact Paul Howe for more information



COLDWELL BANKER
COMMERCIAL

HERITAGE



PAUL HOWE

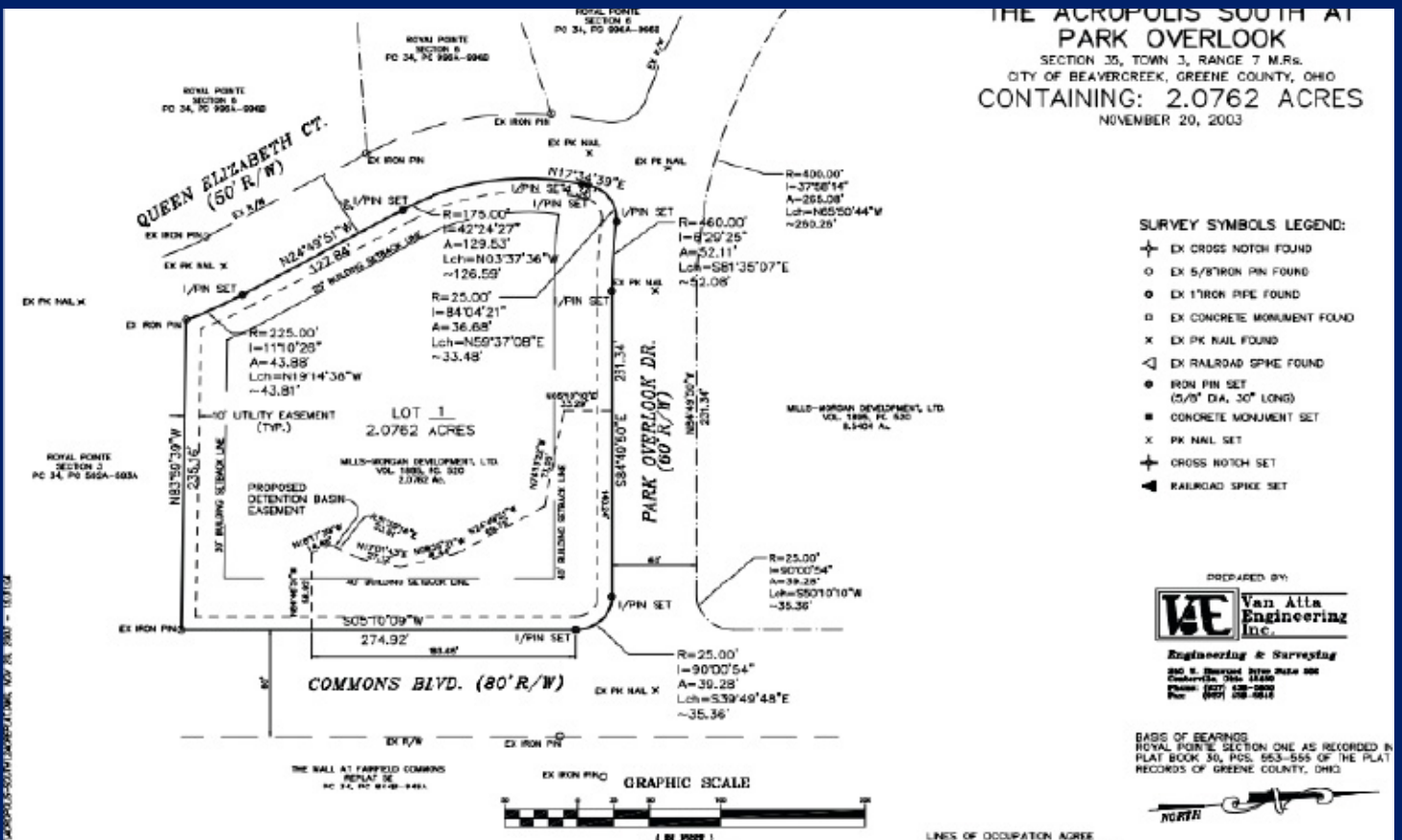
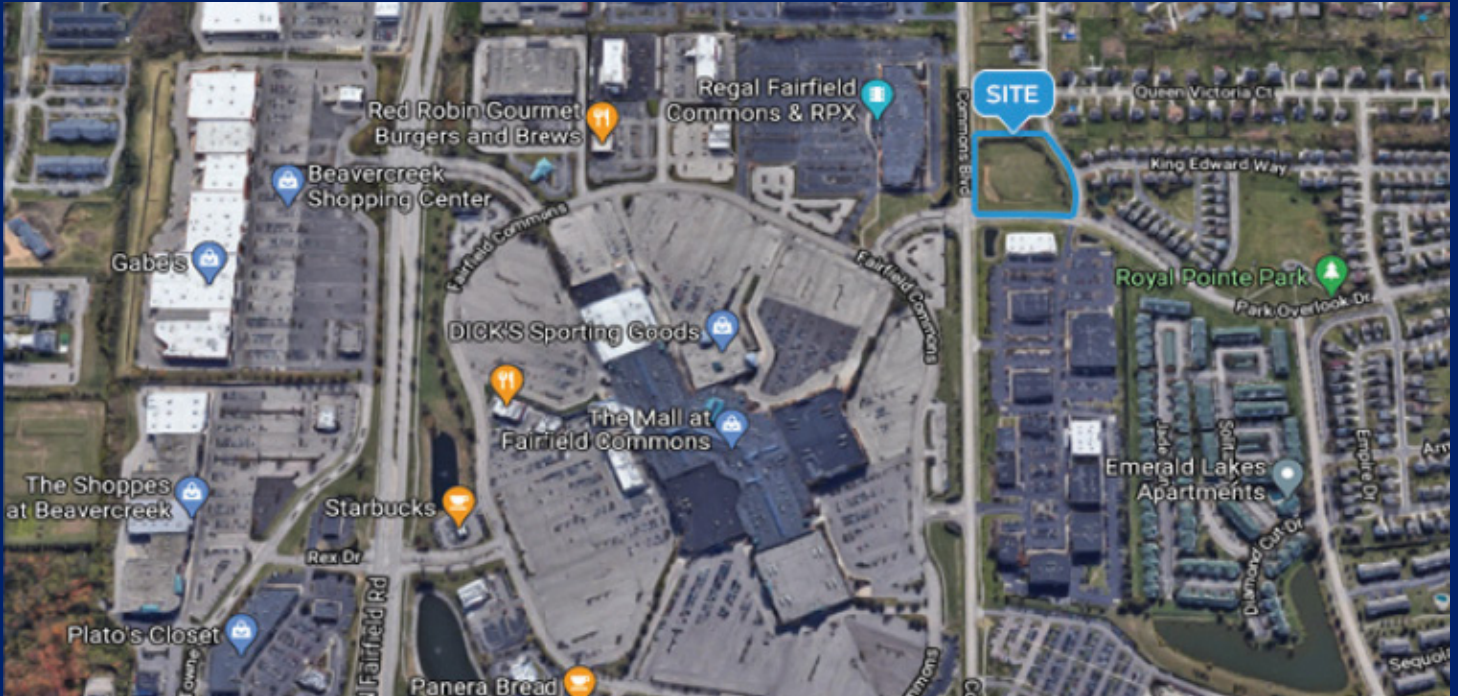
Associate Broker
The Paul Howe Group
937-475-1963

paul.howe@cbcommercial-heritage.com
www.ThePaulHoweGroup.com



COLDWELL BANKER
COMMERCIAL

HERITAGE



The Paul Howe Group, Coldwell Banker Heritage, 937-475-1963 | paul.howe@cbcommercial-heritage.com | www.ThePaulHoweGroup.com



© 2025 Coldwell Banker Real Estate LLC. All Rights Reserved. Coldwell Banker Real Estate LLC fully supports the principles of the Fair Housing Act and the Equal Opportunity Act. Each Office is Independently Owned and Operated. Coldwell Banker® and the Coldwell Banker logo are registered service marks owned by Coldwell Banker Real Estate LLC.

