



YORK AT TERRACE DALE

7801 YORK ROAD | TOWSON, MARYLAND 21204

FOR
LEASE



MACKENZIE

COMMERCIAL REAL ESTATE SERVICES, LLC

PROPERTY OVERVIEW

HIGHLIGHTS:

- Tenant controlled access and HVAC
- Built out of medical office suites
- On public transportation line
- Operable windows
- Plentiful free surface parking
- Locally owned and managed by the MacKenzie Companies
- Private restrooms

STORIES:

SUITE 124: 1,539 SF
SUITE 240: 2,088 SF
SUITE 345: 1,788 SF

PARKING:

4:1,000 SF

TERM:

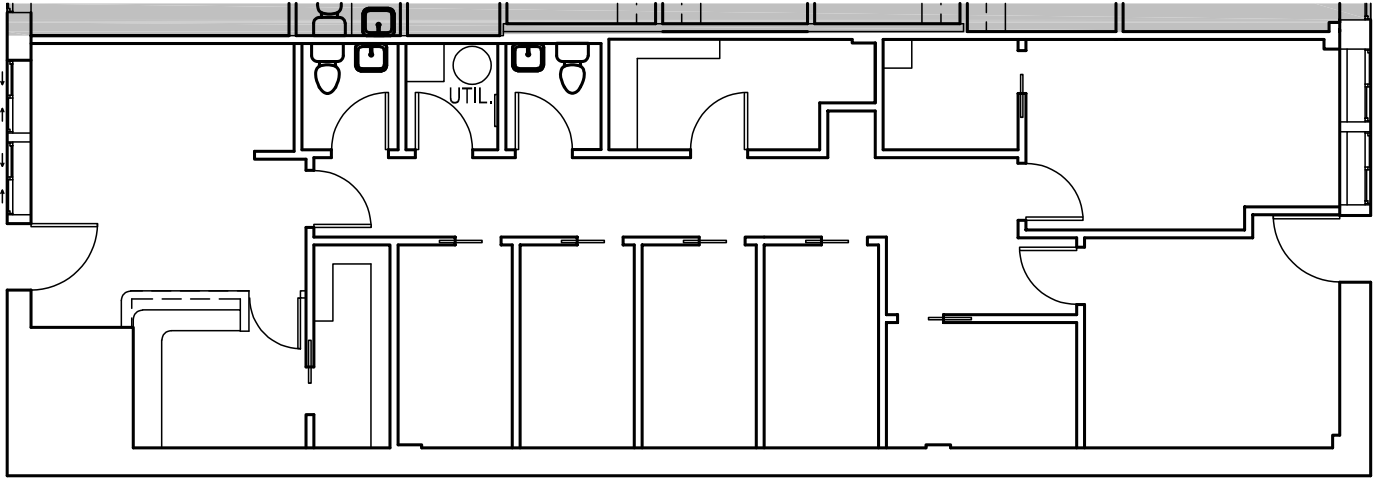
3 - 5 YEARS



GOOGLE STREET VIEW

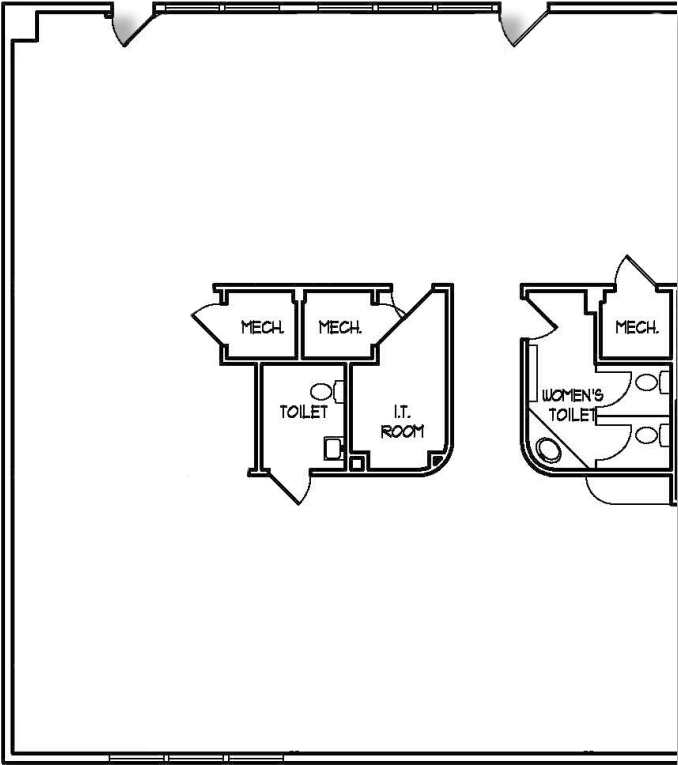
FLOOR PLAN

SUITE 124: 1,539 SF



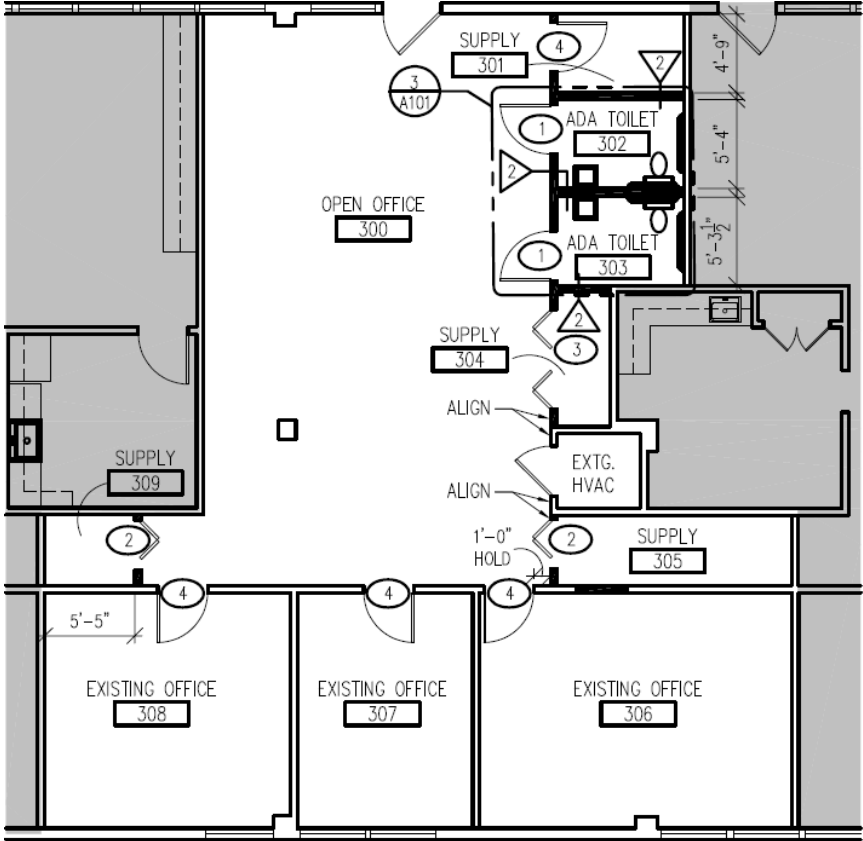
FLOOR PLAN

SUITE 240: 2,088 SF



FLOOR PLAN

SUITE 345: 1,788 SF



LOCAL BIRDSEYE



UPTOWN TOWSON

TOWSON UNIVERSITY

45

AIGBURTH RD

SITE

YORK RD 35,330 AADT

CROSS CAMPUS DR



PROPERTY PHOTOS



DEMOGRAPHICS

2023

RADIUS:

1 MILE

3 MILES

5 MILES

RESIDENTIAL POPULATION



22,671

137,366

360,404

DAYTIME POPULATION



39,774

143,647

348,173

AVERAGE HOUSEHOLD INCOME



\$143,483

\$126,032

\$118,062

NUMBER OF HOUSEHOLDS



7,156

55,072

146,528

MEDIAN AGE

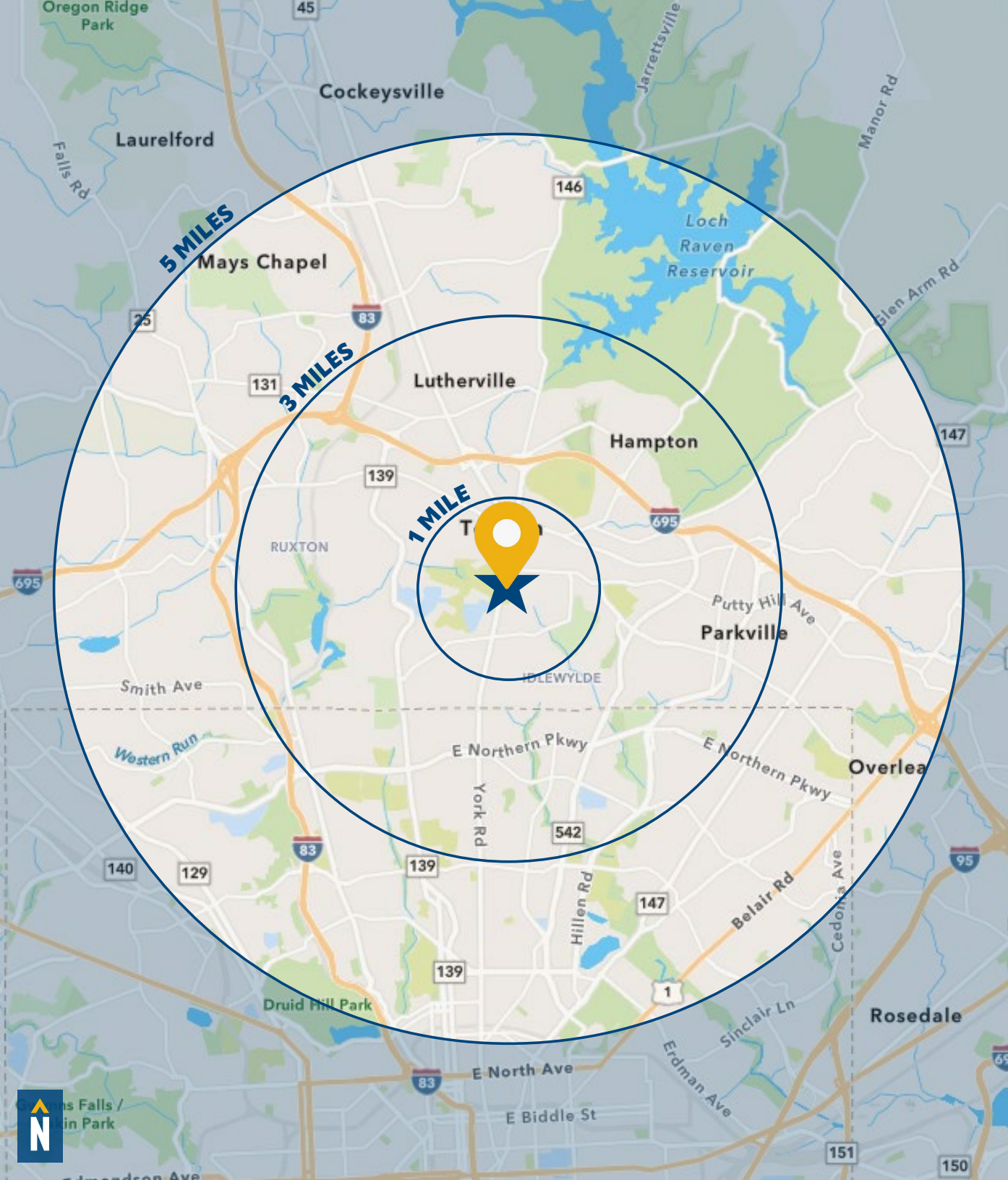


26.3

37.8

39.2

[FULL DEMOS REPORT](#)



FOR MORE INFO CONTACT:



MATT MUELLER

SENIOR VICE PRESIDENT & PRINCIPAL

410.494.6658

MMUELLER@mackenziecommercial.com



JOE BRADLEY

SENIOR VICE PRESIDENT & PRINCIPAL

410.494.4892

JBRADLEY@mackenziecommercial.com



HENSON FORD

VICE PRESIDENT

410.494.6657

HFORD@mackenziecommercial.com



DYLAN BOZEL

REAL ESTATE ADVISOR

410.494.4896

DBOZEL@mackenziecommercial.com



VISIT **PROPERTY PAGE** FOR MORE INFORMATION.



MACKENZIE

COMMERCIAL REAL ESTATE SERVICES, LLC

410-821-8585

2328 W. Joppa Road, Suite 200
Lutherville, MD 21093

OFFICES IN:

ANNAPOLIS

BALTIMORE

BEL AIR

COLUMBIA

LUTHERVILLE

www.MACKENZIECOMMERCIAL.com

No warranty or representation, expressed or implied, is made as to the accuracy of the information contained herein, and same is submitted subject to errors, omissions, change of price, rental or other conditions, withdrawal without notice, and to any specific listing conditions imposed by our principals.