



Exit 195 - Laurel Rd

AADT 91,000



195 Triple Diamond Blvd.
Venice, Florida

FOR LEASE 24,791± SF

Freestanding Fully Air-Conditioned
Flex Building

Michelle Senner, SIOR

Senior Associate
Industrial Services
+1 813 900 7247
michelle.senner@colliers.com

Lori Hellstrom, CCIM

Vice President
Office & Industrial Services
+1 941 504 5981
lori.hellstrom@colliers.com



Property Overview

24,791± SF

available in freestanding building

Located in North Venice, Florida, this property offers convenient access to I-75 and sits centrally between Tampa and Fort Myers. Constructed in 2005 and renovated in 2009, it is positioned within a well-established corporate complex that also features a 90,800± SF flex facility at 201 Triple Diamond Boulevard.

The building boasts a modern interior design, making it ideally suited for a range of uses, including light industrial, R&D, technology, office, or hybrid operations.

- First floor: 20,540± SF
- Second floor: 4,251± SF
- Loading: Ability to add grade doors
- Parking ratio: 4/1,000 SF
- Updates: High-end finish epoxy coated flooring, resurfaced parking lot, new exterior building paint, newly installed downspouts

Call For Pricing



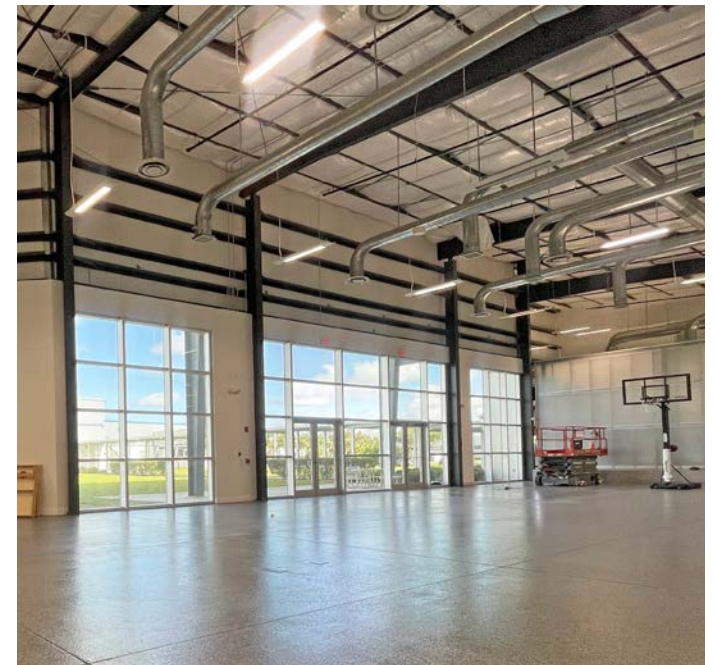
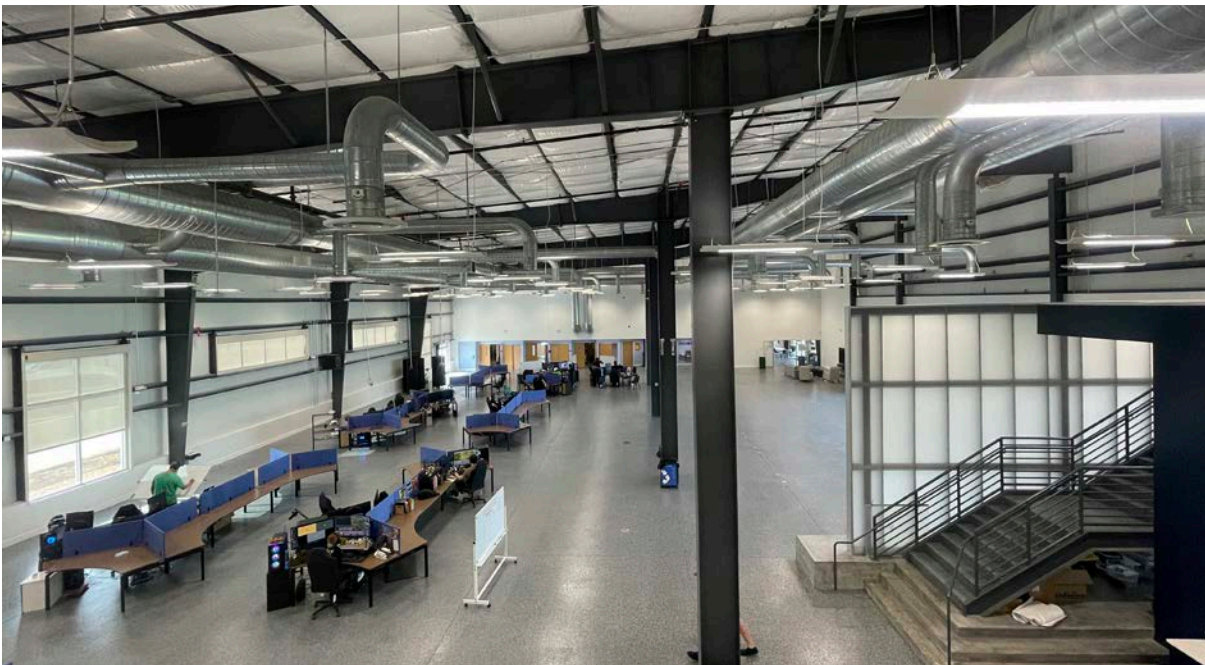
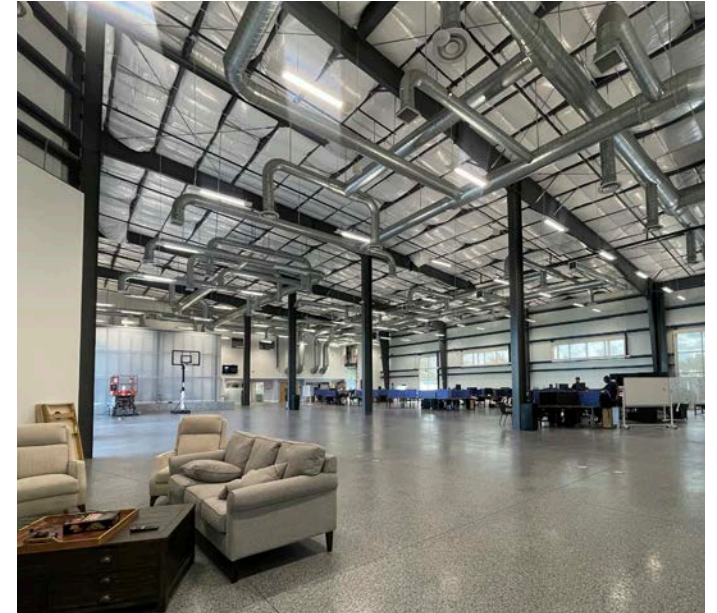
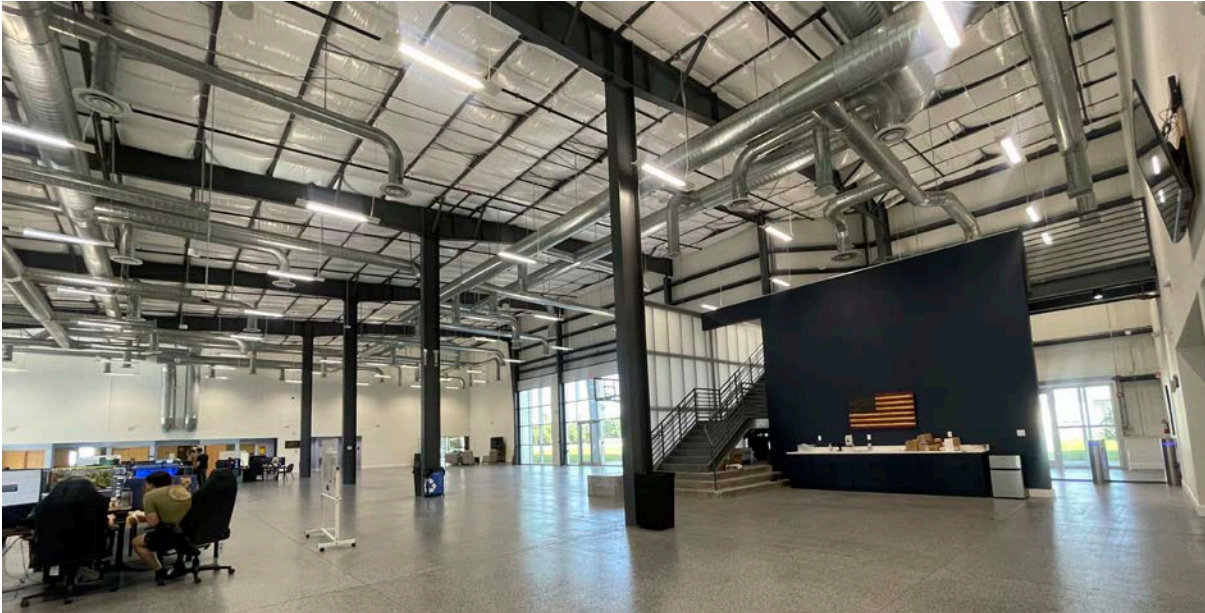


Property Photos





Property Photos

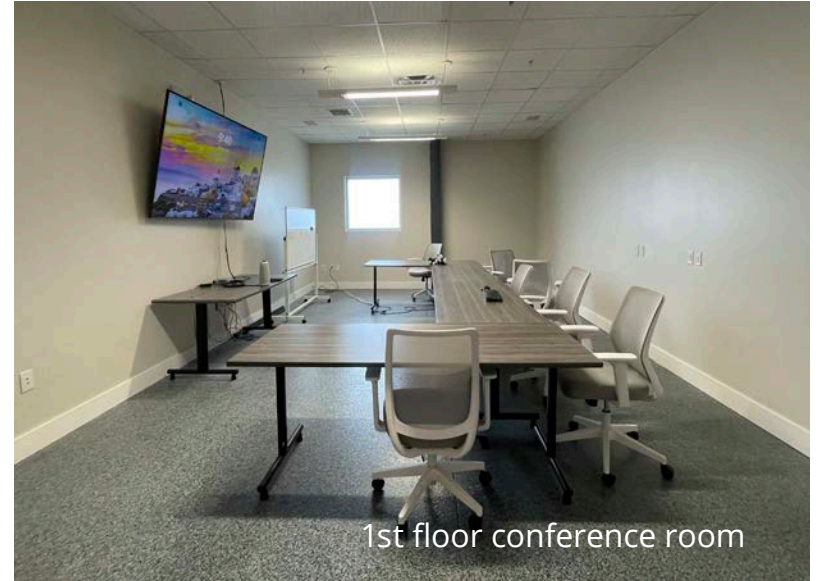




Property Photos



2nd floor offices



1st floor conference room



1st floor offices



Roll-up doors



Area Amenities

Many amenities are just a short drive from the Property as well as new residential developments and the recently constructed Sarasota Memorial Hospital of Venice.

Magnolia Bay South
Single Family
Homes

Kings Gate
Single Family
Homes

195 Triple Diamond Blvd.

Toscana Isles
Single Family
Homes

Cassata Lakes
Single Family
Homes

Triple Diamond Blvd.



Knights Trail Rd.

Demographic Summary	1-hour drive time	2-hour drive time	3-hour drive time
Population	1,707,797	6,678,820	13,700,846
Households	752,197	2,801,441	5,508,925
Average Household Income	\$113,592	\$111,843	\$108,798



Laurel Road East - Exit 195

Laurel Nokomis School



Sarasota Memorial
Hospital Venice



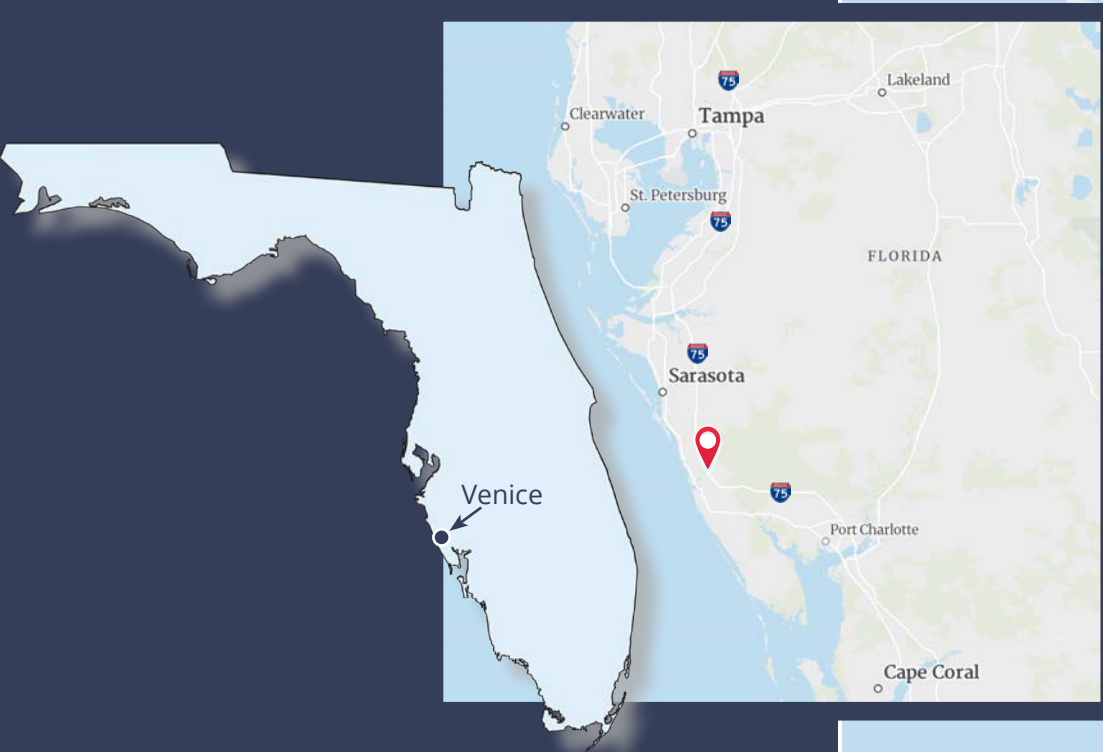
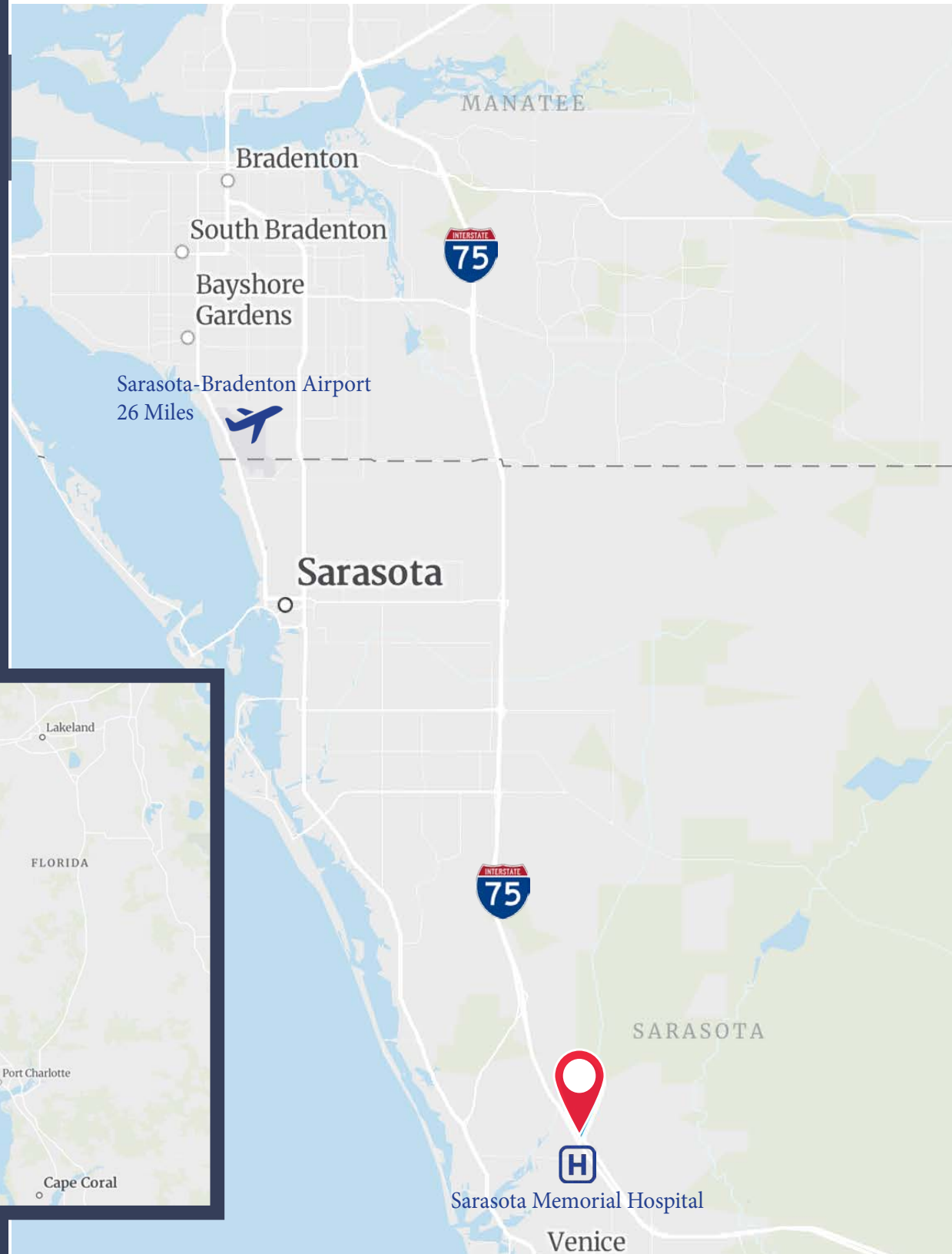


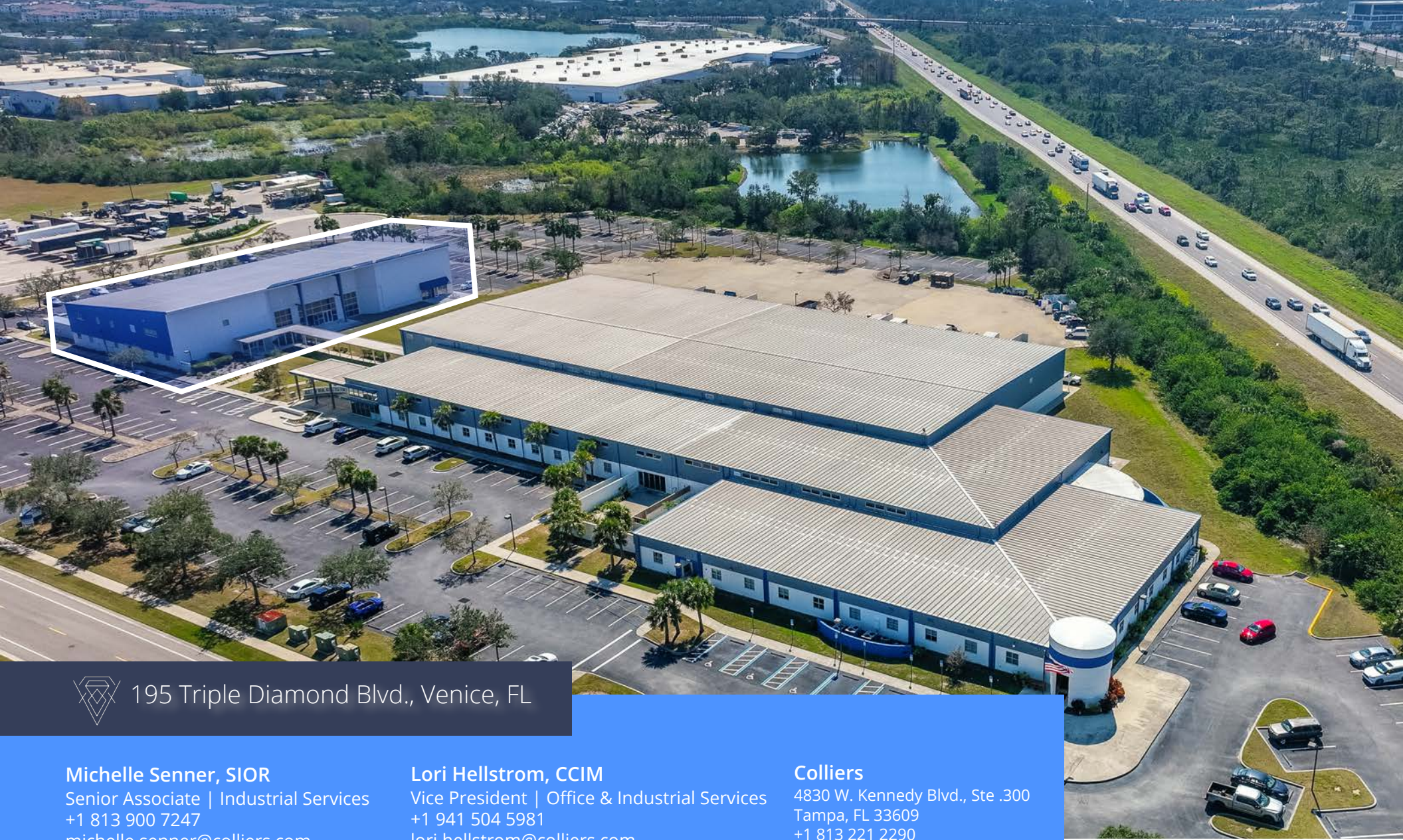
Location

201 Triple Diamond Boulevard is situated within the Triple Diamond Industrial Park in Sarasota County with retail and other support services within close proximity. Located between Tampa and Ft. Myers, the Property sits just off Interstate 75 via the Laurel Road exit providing immediate interstate access.

Drive Times

Downtown Sarasota	22 Miles
Sarasota-Bradenton Airport	26 Miles
St. Pete-Clearwater Airport	67 Miles
Downtown Tampa	71 Miles
Tampa International Airport	75 Miles





 195 Triple Diamond Blvd., Venice, FL

Michelle Senner, SIOR
Senior Associate | Industrial Services
+1 813 900 7247
michelle.senner@colliers.com

Lori Hellstrom, CCIM
Vice President | Office & Industrial Services
+1 941 504 5981
lori.hellstrom@colliers.com

Colliers
4830 W. Kennedy Blvd., Ste .300
Tampa, FL 33609
+1 813 221 2290

This document has been prepared by Colliers for advertising and general information only. Colliers makes no guarantees, representations or warranties of any kind, expressed or implied, regarding the information including, but not limited to, warranties of content, accuracy and reliability. Any interested party should undertake their own inquiries as to the accuracy of the information. Colliers excludes unequivocally all inferred or implied terms, conditions and warranties arising out of this document and excludes all liability for loss and damages arising there from. This publication is the copyrighted property of Colliers and/or its licensor(s). Copyright © 2026. All rights reserved. This communication is not intended to cause or induce breach of an existing listing agreement. Colliers International Florida, LLC.

Buligo
Building Growth

Colliers
Accelerating success.