

222 SW Port St Lucie Blvd
Port St. Lucie, FL 34984

FORMER PIZZA
RESTAURANT



FC FLORIDA
COMMERCIAL
REAL ESTATE COMPANY



ALBERT BROWN
Sales Associate
T: 772.631.7989
E: albert@albertbrownre.com

1,332 SF

309 SE Osceola Street #104 • Stuart, FL 34994 • 772.223.3646 • florida-commercial.net

©Florida Commercial 2021 • This offering is subject to errors, prior to sale/lease, withdrawal, or change in price, terms or conditions without notice.

EXECUTIVE SUMMARY

222 SW Port St Lucie Blvd, Port St. Lucie, FL 34984 | FORMER PIZZA RESTAURANT

SPECS

Unit Size: 1,332 SF
Price: \$28 Per SF / Modified Gross
Term: Negotiable
Year Built: 2007
Zoning: General Commercial

PROPERTY OVERVIEW

This former pizza restaurant is fully equipped with a pizza oven, hood vent, grease trap, cold lines, walk-in cooler, and a large Hobart mixer. The property offers excellent monument and building signage with high visibility, located just off the turnpike and PSL Blvd. This setup is ideal for restaurant or food-service businesses.



ALBERT BROWN
Sales Associate
T: 772.631.7989
E: albert@albertbrownre.com

1,332 SF



FC FLORIDA
COMMERCIAL
REAL ESTATE COMPANY



ALBERT BROWN
Sales Associate
T: 772.631.7989
E: albert@albertbrownre.com

1,332 SF

309 SE Osceola Street #104 • Stuart, FL 34994 • 772.223.3646 • florida-commercial.net

©Florida Commercial 2021 • This offering is subject to errors, prior to sale/lease, withdrawal, or change in price, terms or conditions without notice.



FC FLORIDA
COMMERCIAL
REAL ESTATE COMPANY



ALBERT BROWN
Sales Associate
T: 772.631.7989
E: albert@albertbrownre.com

1,332 SF



FC **FLORIDA**
COMMERCIAL
REAL ESTATE COMPANY



ALBERT BROWN
Sales Associate
T: 772.631.7989
E: albert@albertbrownre.com

1,332 SF

RETAIL MAP & REPORT

222 SW Port St Lucie Blvd, Port St. Lucie, FL 34984

FORMER PIZZA RESTAURANT



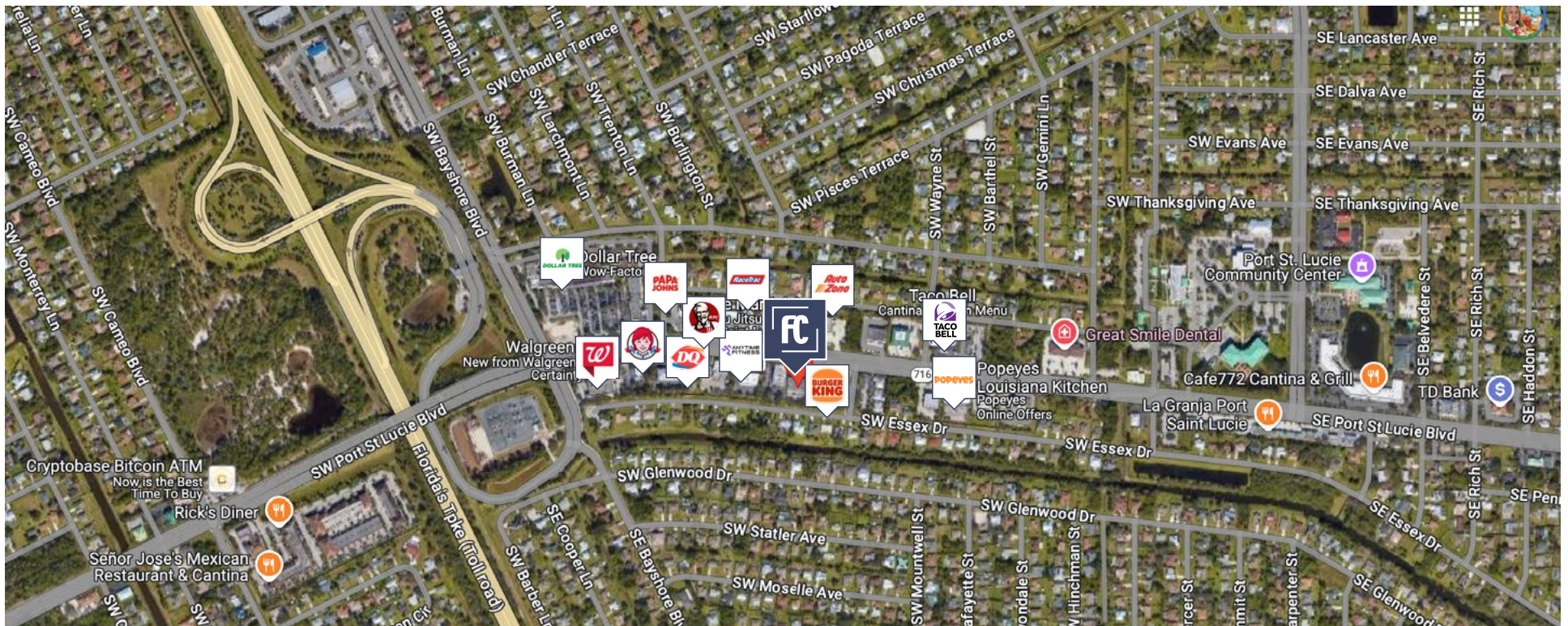
POPULATION

	1 MILE	3 MILES	5 MILES
Population	24.5K	73.6K	175K
Median age	43	48	46



HOUSEHOLDS & INCOME

	1 MILE	3 MILES	5 MILES
Total households	11,370	29.5K	68.1K
# of Employees	20.4K	61.7K	146K
Average HH income	\$64.3K	\$65K	\$70.2K

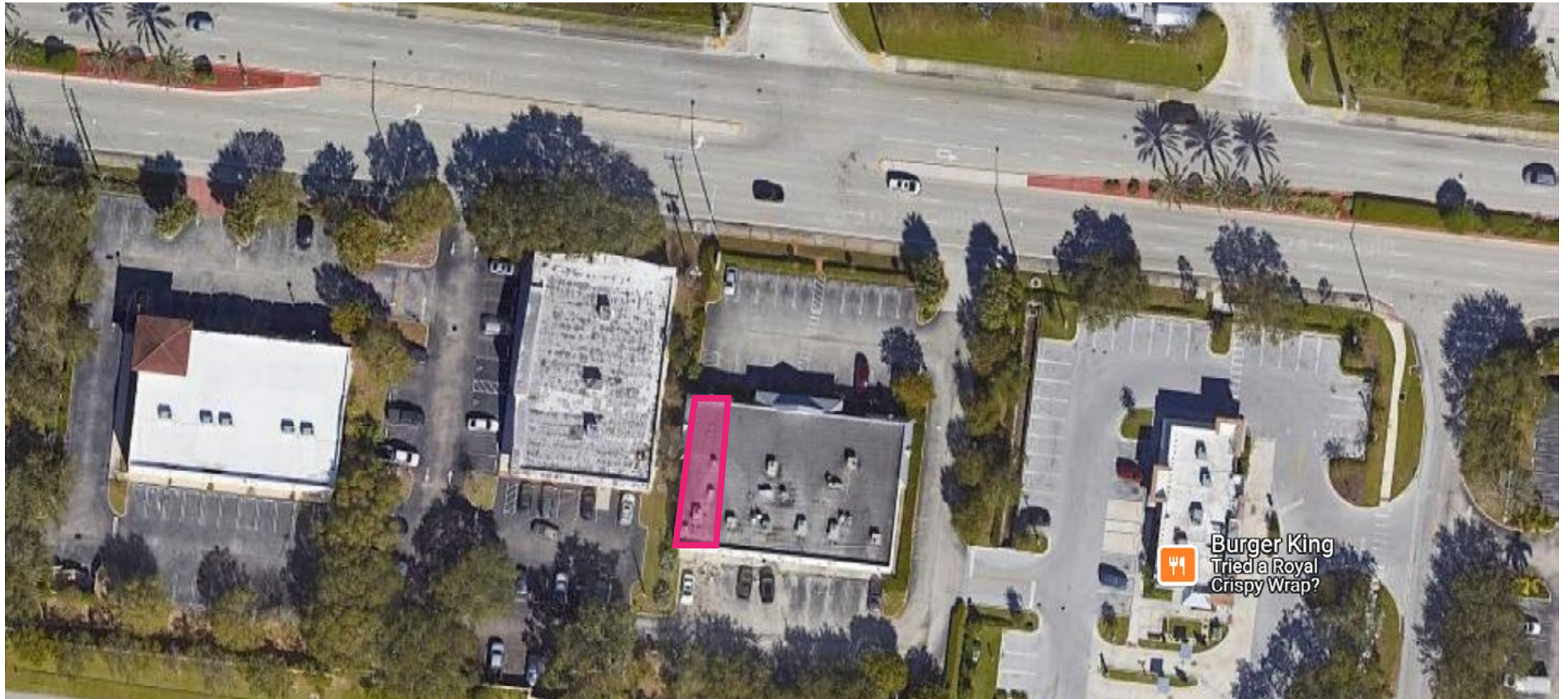


ALBERT BROWN
Sales Associate
T: 772.631.7989
E: albert@albertbrownre.com

1,332 SF

LOCATION

222 SW Port St Lucie Blvd, Port St. Lucie, FL 34984 | FORMER PIZZA RESTAURANT



ALBERT BROWN
Sales Associate
T: 772.631.7989
E: albert@albertbrownre.com

1,332 SF