

FOR LEASE



GEORGE MASON SQUARE

101, 103, 105 W. Broad St | Falls Church, VA



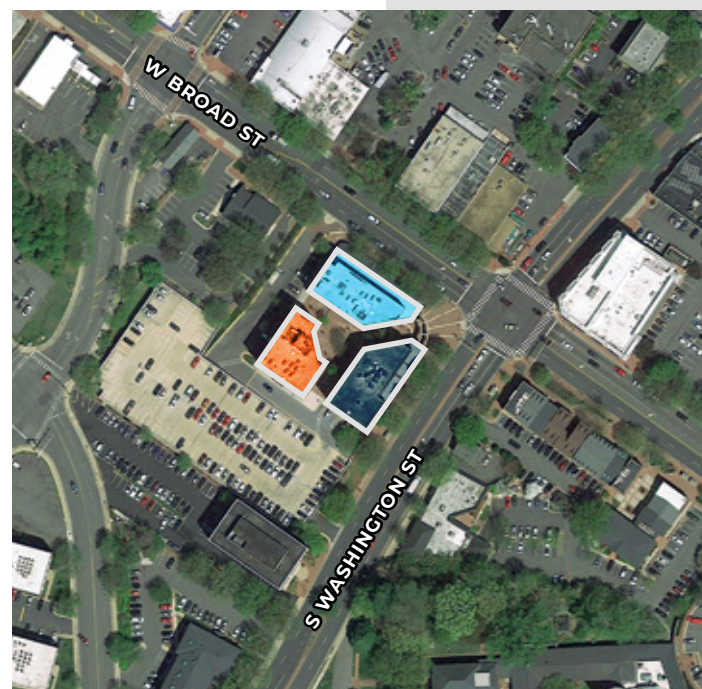
C. Todd McManus
703.334.5622
tmcmanus@edgecre.com



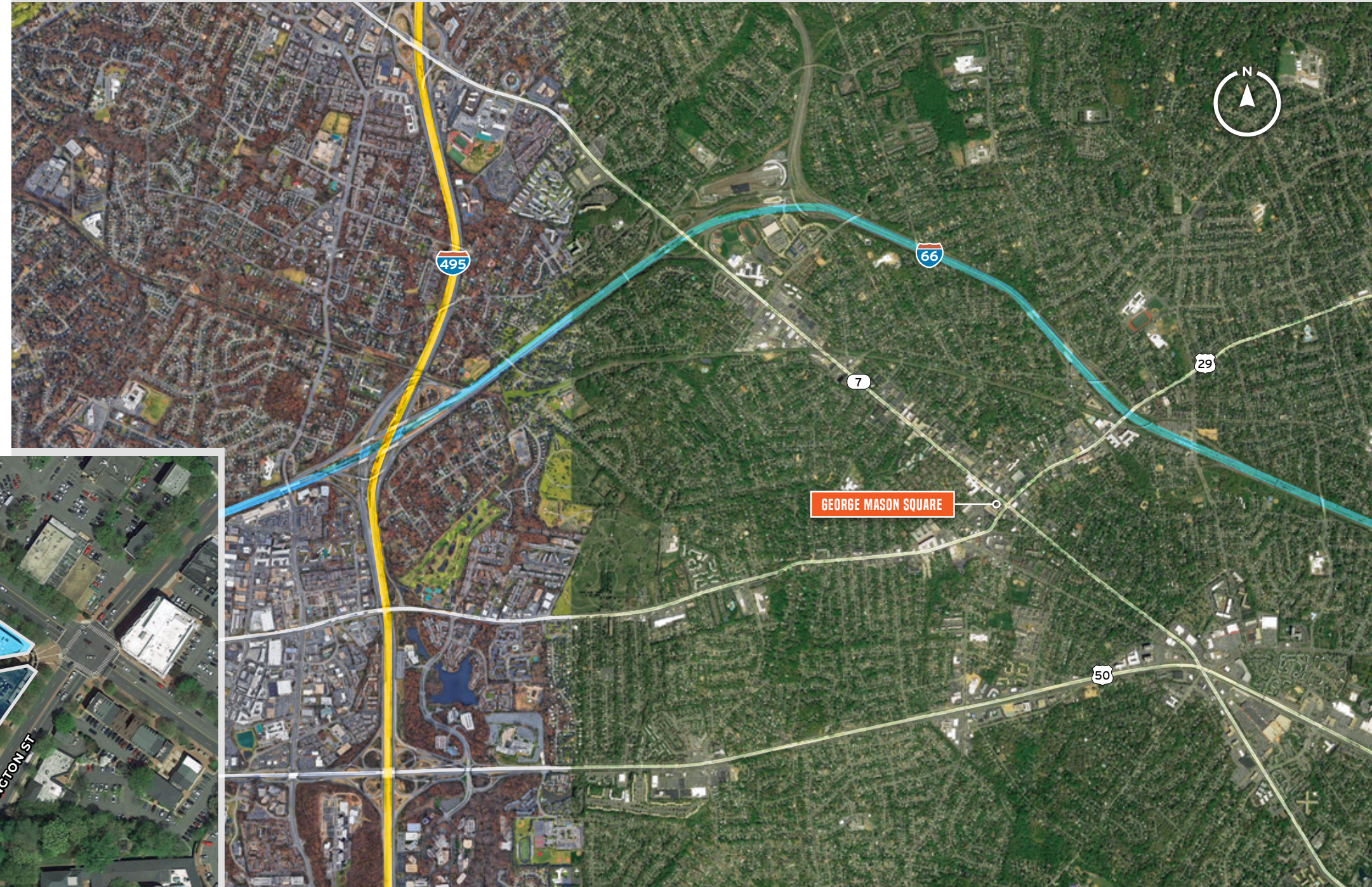
Overview

ASSET INFORMATION

- George Mason Square consists of three (3) buildings in a private courtyard setting
- Located in the heart of Falls Church
- Mix of open/office space
- Excellent street visibility
- One (1) level free covered parking
- Free surface level parking
- Ireland's Four Provinces on-site
- Close proximity to East Falls Church Metro (Orange Line)
- Various retail options in walking distance
- Walk Score | Walker's Paradise (92)



- Building 1 | 101 W Broad St
- Building 2 | 103 W Broad St
- Building 3 | 105 W Broad St





Amenities



Restaurant, Dining, Cafe & Bar

1. Spacebar
2. Panera Bread
3. Chipotle Mexican Grill
4. Starbucks
5. Rare Bird Coffee Roasters
6. Dogwood Tavern
7. Hot N Juicy Crawfish
8. Applebee's Grill + Bar
9. Elavation Burger
10. Takumi
11. Dunkin'
12. Caribbean Plate
13. Panjshir
14. Chasin' Tails
15. YUME SUSHI
16. South Block



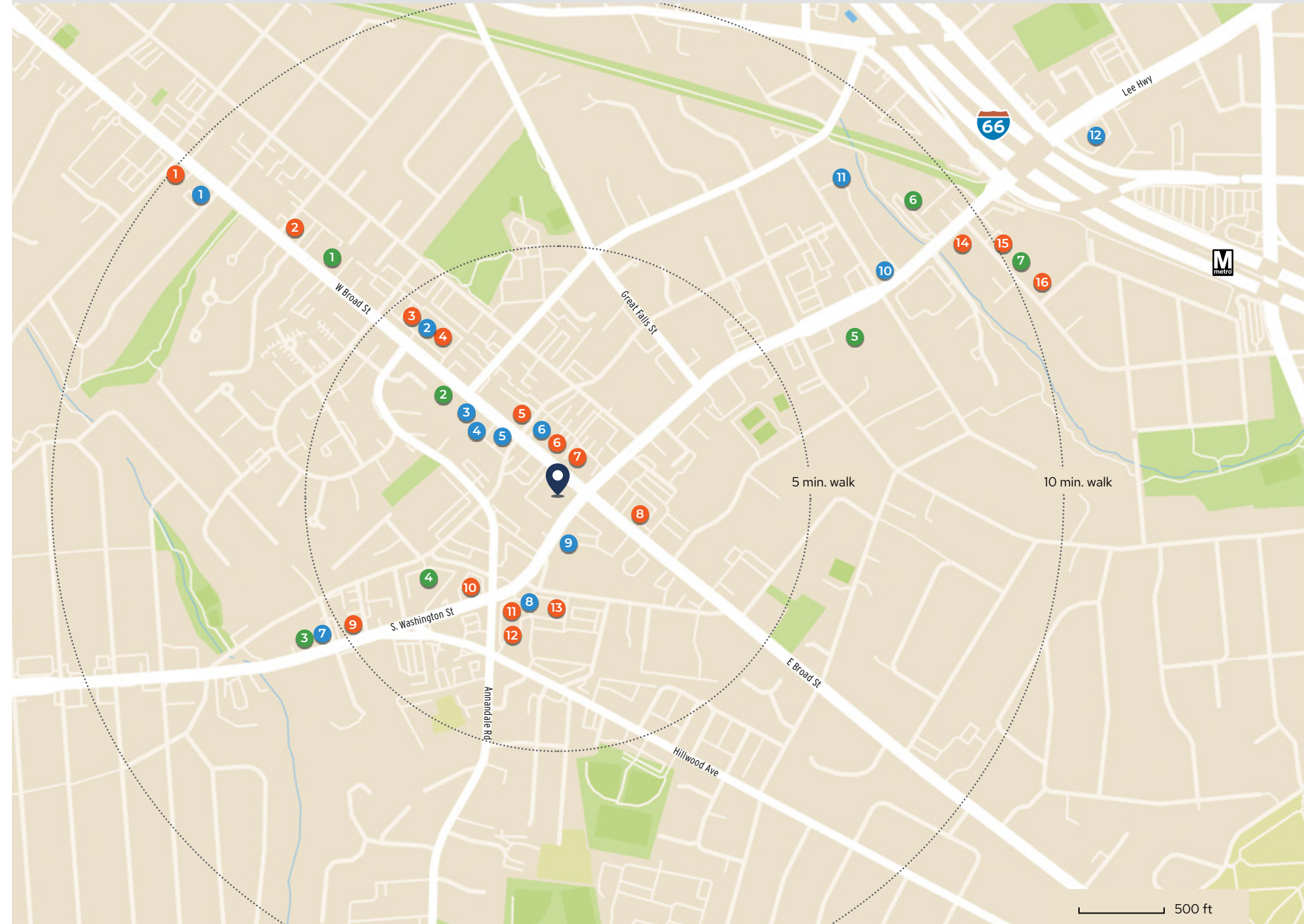
Retail, Shopping & Banking

1. SunTrust
2. FedEx Office Print & Ship Center
3. Harris Teeter
4. PNC Bank ATM
5. Burke & Herbert Bank
6. CVS
7. Target
8. 7-Eleven
9. M&T Bank
10. Bank of America Financial Center
11. Bikenetic
12. 7-Eleven



Fitness, Health & Wellness

1. CorePower Yoga
2. CYCLEBAR
3. Orangetheory Fitness
4. Functional Fitness VA
5. The Perfect Workout Falls Church
6. CrossFit Falls Church
7. Pure Barre Falls Church



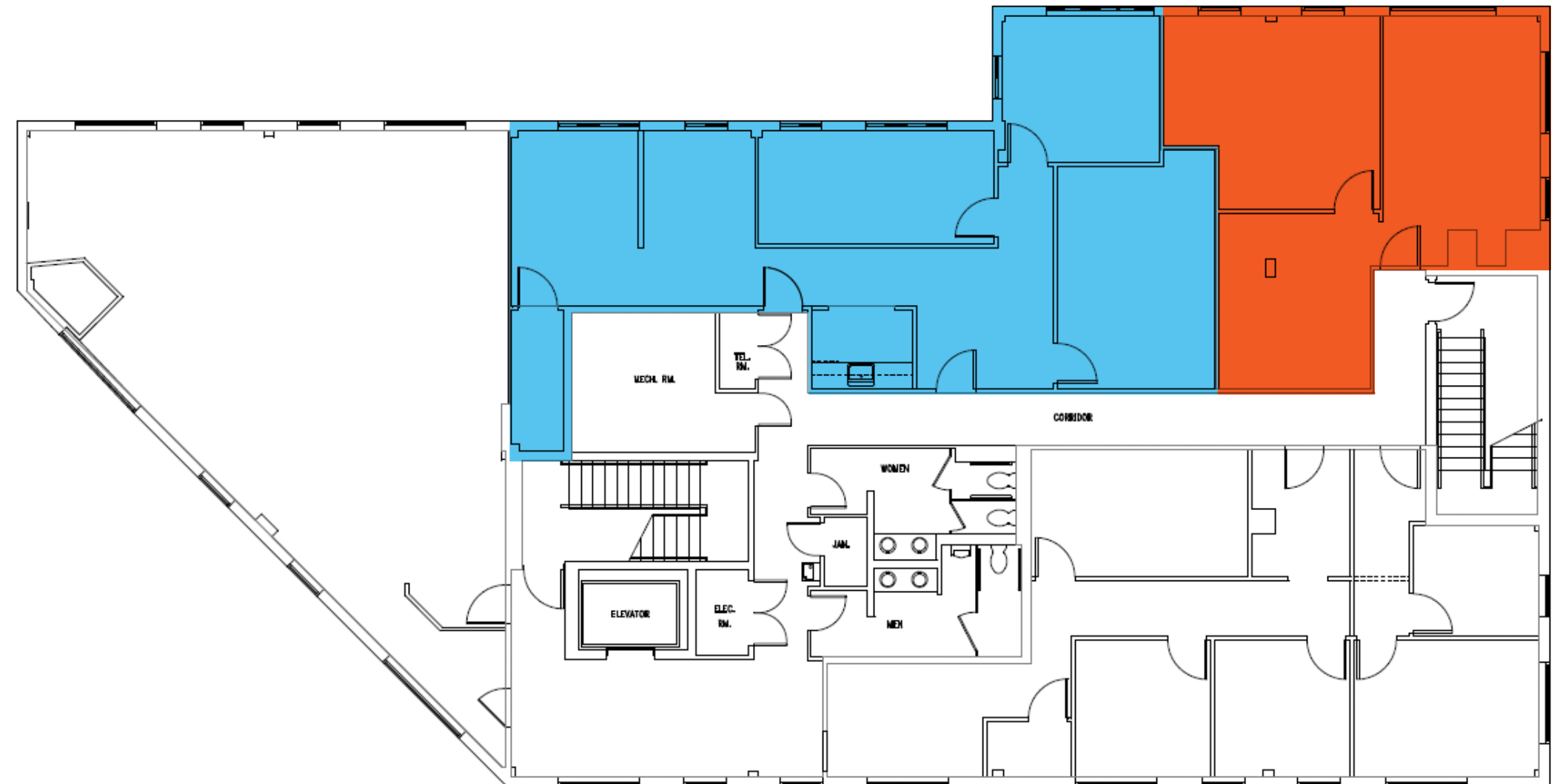


Floor Plans

BUILDING 1 - 101 W BROAD ST

Suite 520 1,436 SF | Available 04.01.2020

Suite 530 790 SF

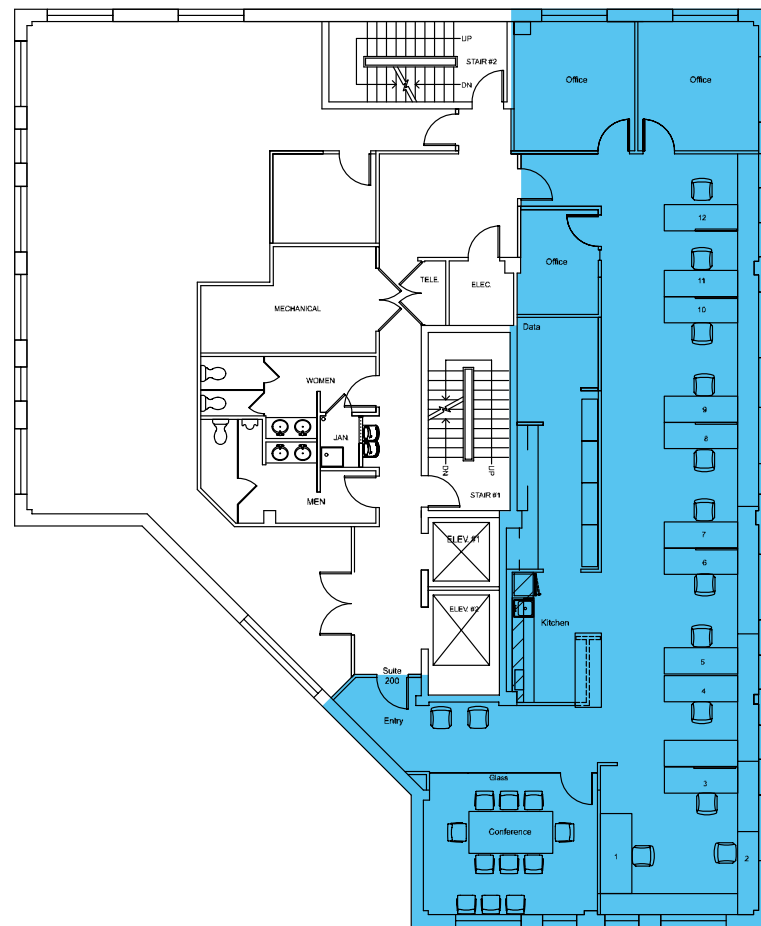




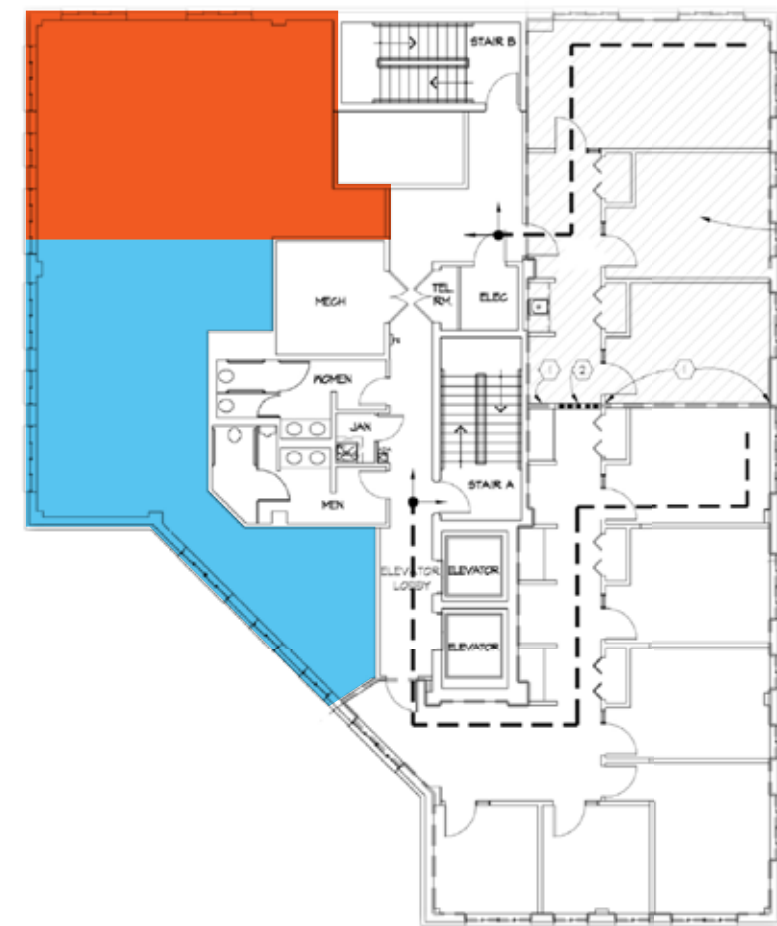
Floor Plans

BUILDING 2 - 103 W BROAD ST

Suite 200 & Suite 220
1,436 SF 700 SF
Potential Availability on 02.28.2021



Suite 320 848 SF
Suite 340 996 SF

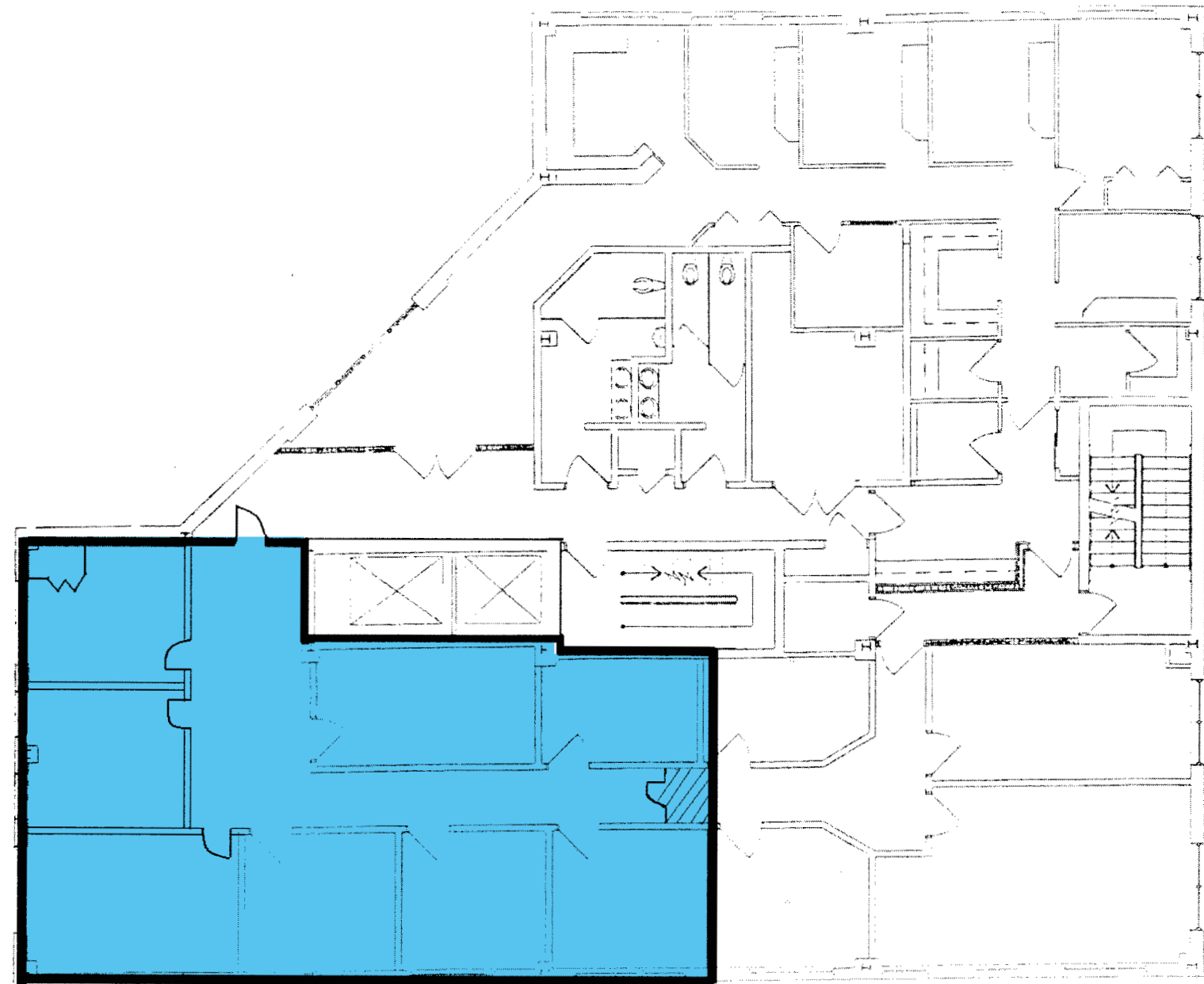




Floor Plans

BUILDING 2 - 103 W BROAD ST

Suite 602 1,530 SF





Maryland (HQ)

2273 Research Blvd | Suite 150
Rockville, MD 20850
301.222.0200

Virginia

7900 Westpark Dr | Suite A340
McLean, VA 22102
703.334.5600

Washington, D.C.

1828 L St, NW | Suite 260
Washington, DC 20036
202.587.9600

Pennsylvania

235 Fort Pitt Blvd
Pittsburgh, PA 15222
412.894.1818

www.edgecre.com    

