

TOWN EAST MEDICAL PLAZA

Medical Office
For Lease

18640 Lyndon B Johnson Fwy | Mesquite, TX 75150



Leasing Information:
214.461.2325

Nat Klein **Zoë Mysing**
214.695.5786 504.982.5799
nklein@lpc.com zmysing@lpc.com

Lincoln

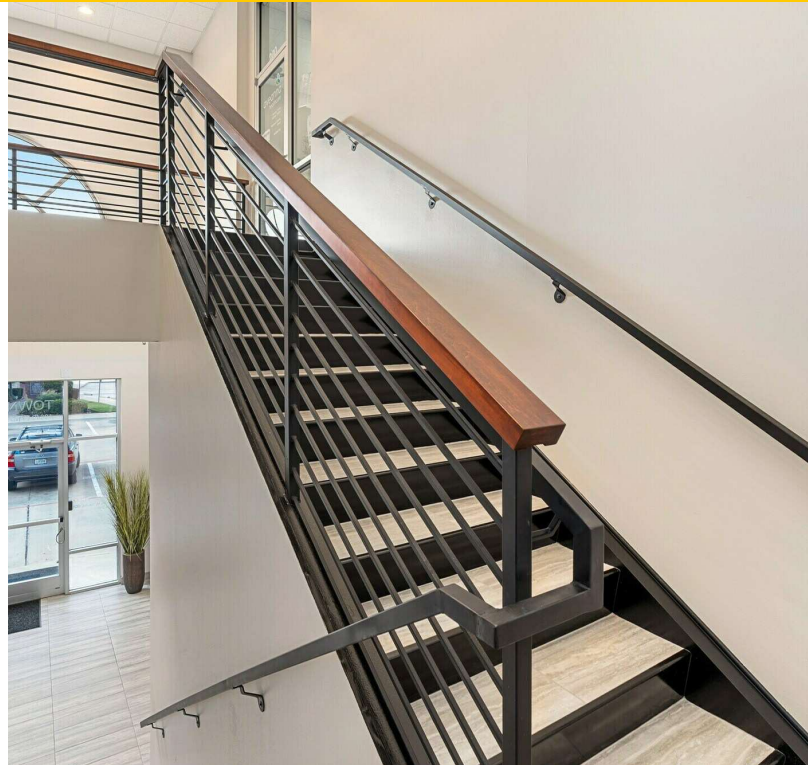
Lincoln Property Company
8140 Walnut Hill Lane Suite 700
Dallas, TX 75231

www.lpc.com

TOWN EAST MEDICAL PLAZA

18640 Lyndon B Johnson Fwy | Mesquite, TX 75150

Property Summary



Property Description

Brand New 1st Generation Medical Office Space. Located on the first floor with direct access from lobby and additional direct exterior access. Space includes 5 - 6 Exam Rooms, Large Waiting Room, In-Suite Restroom, Separate Check-in / Check-Out, Break Area, Multiple Nurse Stations. Town East Medical Plaza is located on the corner of Interstate 635 and Town Center Drive in Mesquite Texas, with easy access to I-30, and U.S. Highway 80.

Property Highlights

- New 1st Generation finishout
- 1st floor with lobby exposure
- Direct exterior access into space
- In Suite Restroom
- 5 - 6 Exam Rooms
- Signage available
- Easily accessible drive-up parking (include parking ratio)

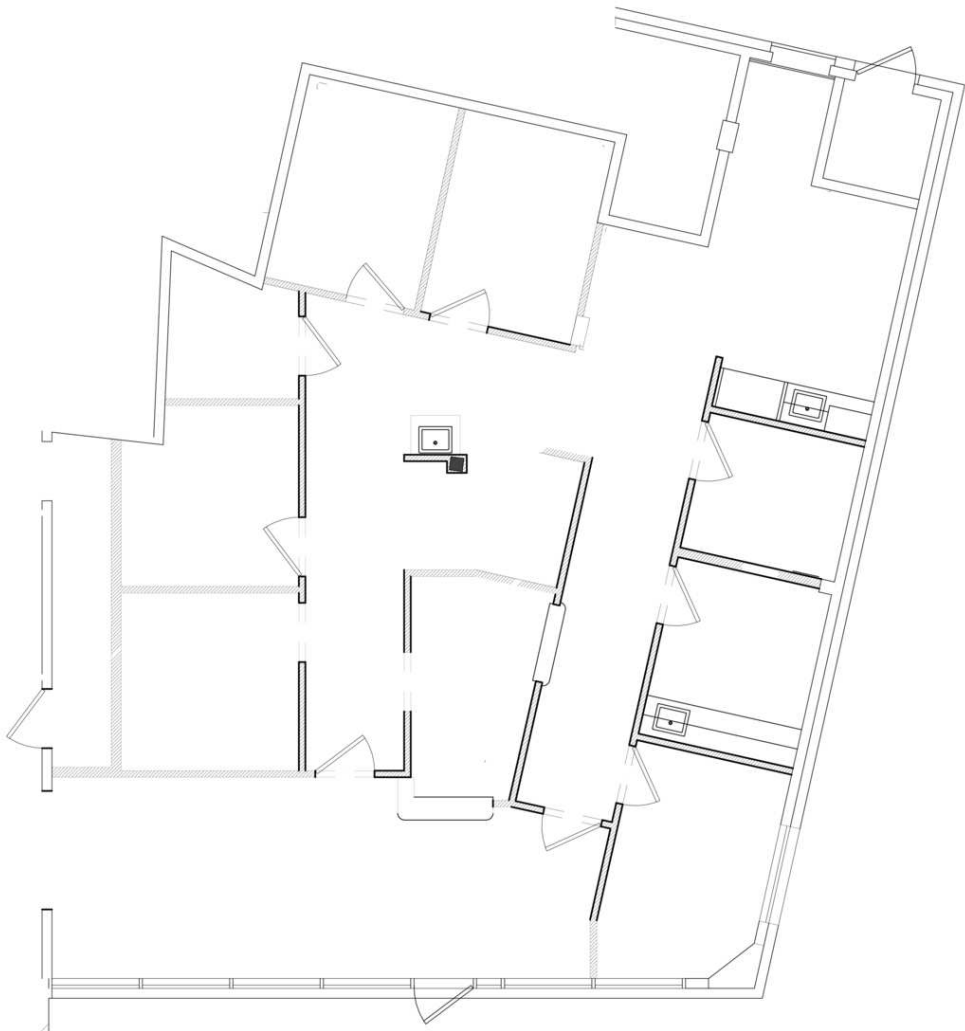
Nat Klein

214.695.5786
nklein@lpc.com

Zoë Mysing

504.982.5799
zmysing@lpc.com

Lincoln



| Suite | Size | Description | Video URL |
|-----------|----------|------------------|---------------------------|
| Suite 102 | 2,017 SF | First Generation | View Here |

Nat Klein

214.695.5786

nklein@lpc.com

Zoë Mysing

504.982.5799

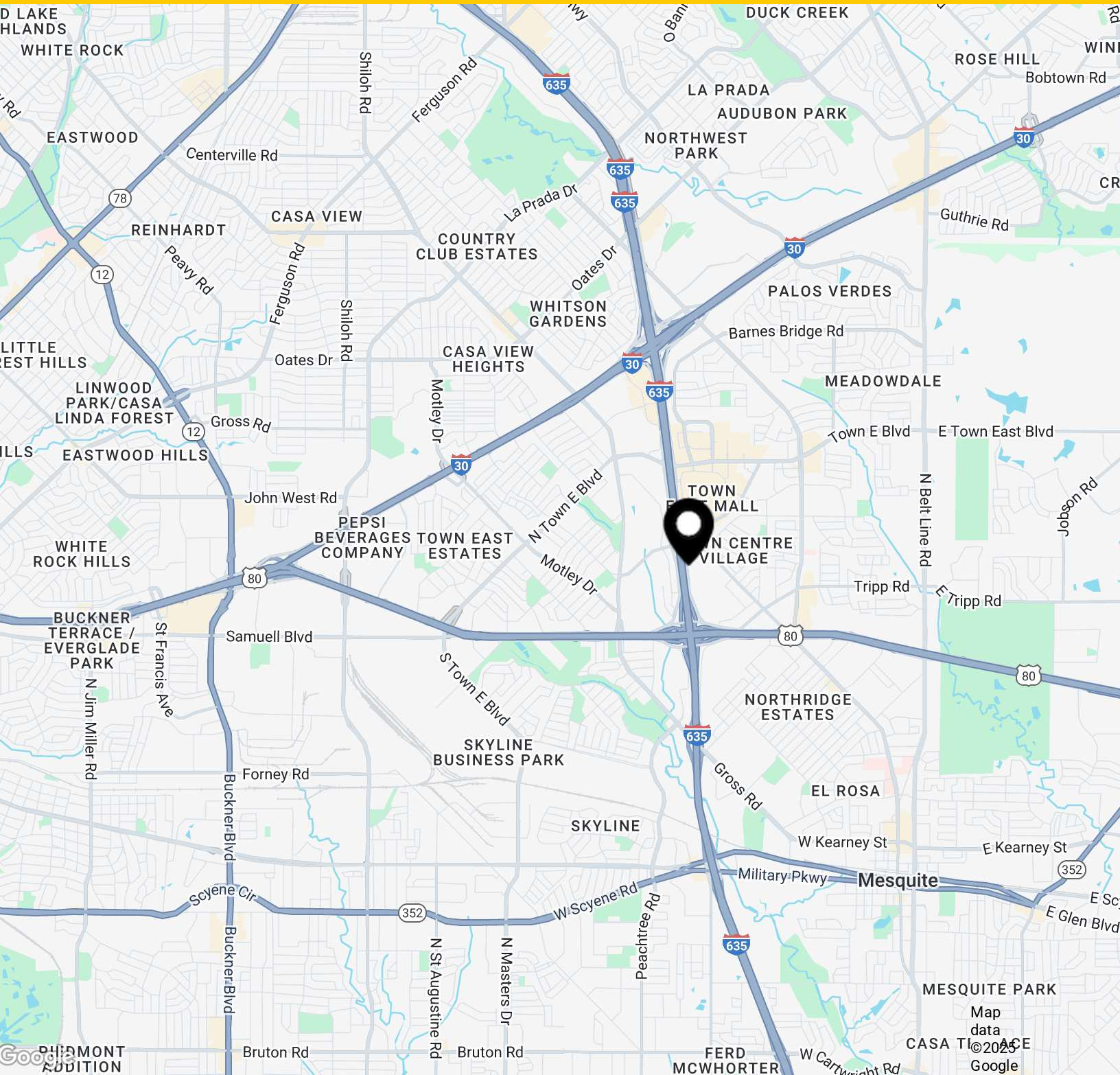
zmysing@lpc.com

Lincoln

TOWN EAST MEDICAL PLAZA

Location Map

18640 Lyndon B Johnson Fwy | Mesquite, TX 75150



Nat Klein
214.695.5786
nklein@lpc.com

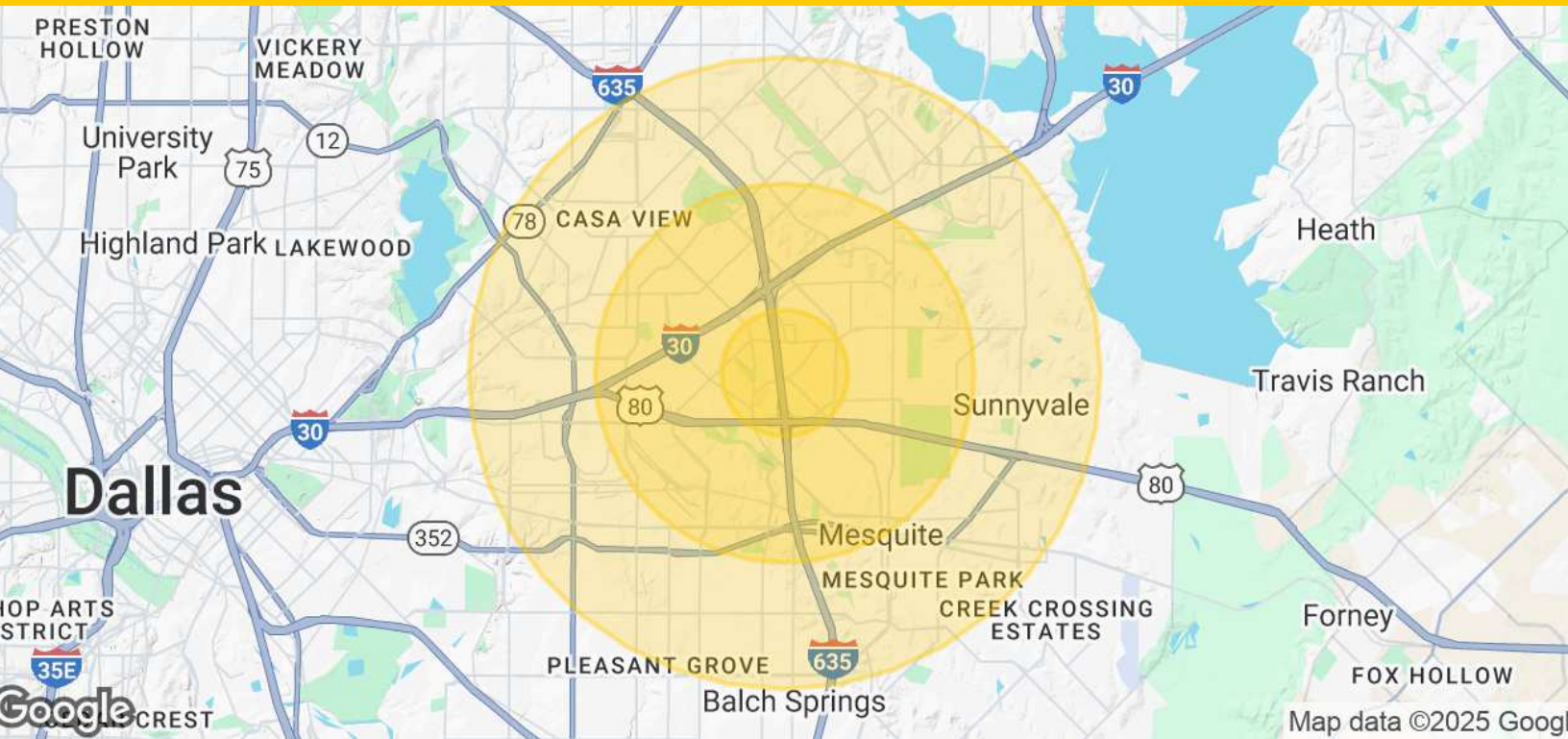
Zoë Mysing
504.982.5799
zmysing@lpc.com

Lincoln

TOWN EAST MEDICAL PLAZA

18640 Lyndon B Johnson Fwy | Mesquite, TX 75150

Demographics Map & Report



| Population | 1 Mile | 3 Miles | 5 Miles |
|----------------------|-----------|-----------|-----------|
| Total Population | 14,370 | 109,663 | 318,860 |
| Average Age | 36 | 36 | 37 |
| Average Age (Male) | 34 | 35 | 35 |
| Average Age (Female) | 37 | 38 | 38 |
| Households & Income | 1 Mile | 3 Miles | 5 Miles |
| Total Households | 5,478 | 37,778 | 107,921 |
| # of Persons per HH | 2.6 | 2.9 | 3 |
| Average HH Income | \$74,850 | \$77,227 | \$79,361 |
| Average House Value | \$300,888 | \$255,647 | \$273,119 |

Demographics data derived from AlphaMap

Nat Klein

214.695.5786

nklein@lpc.com

Zoë Mysing

504.982.5799

zmysing@lpc.com

Lincoln