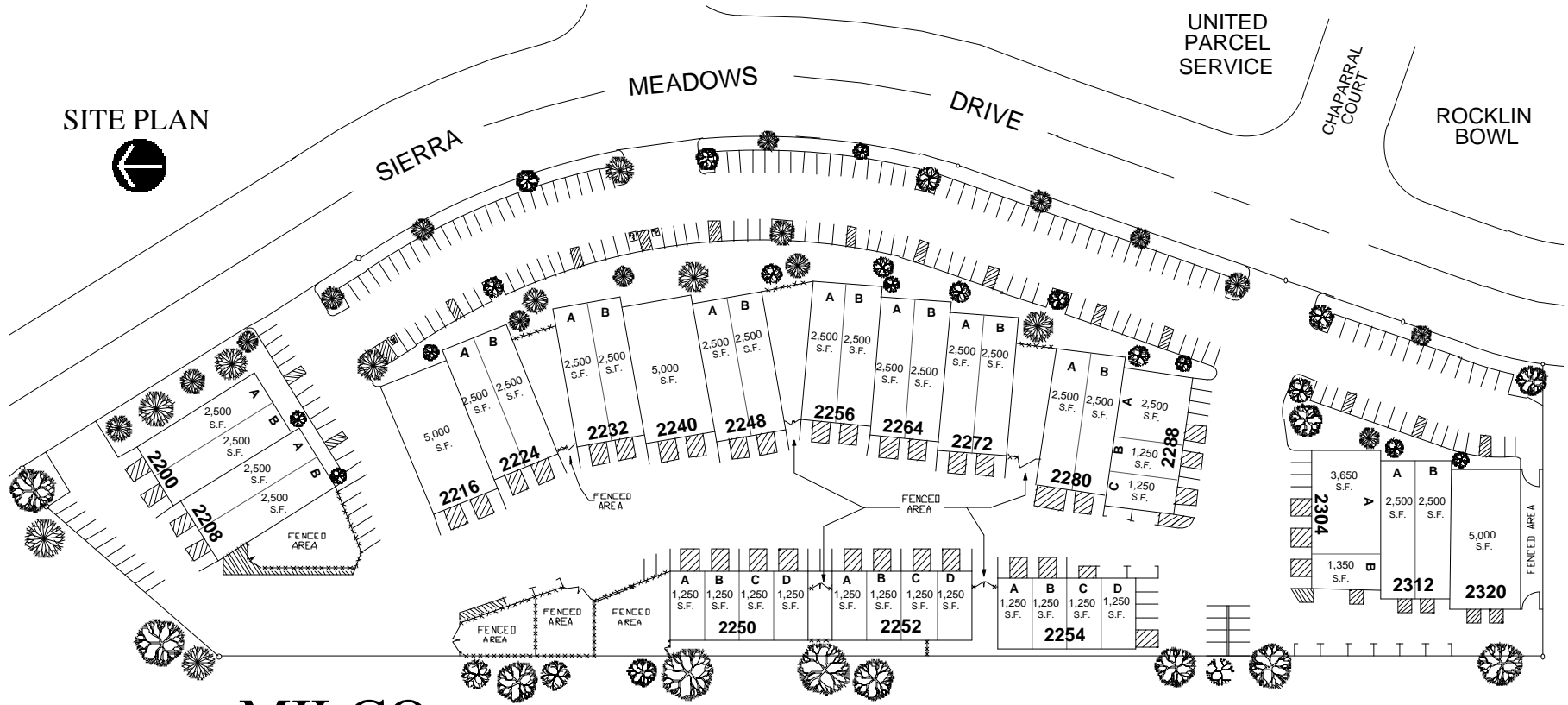


SITE PLAN

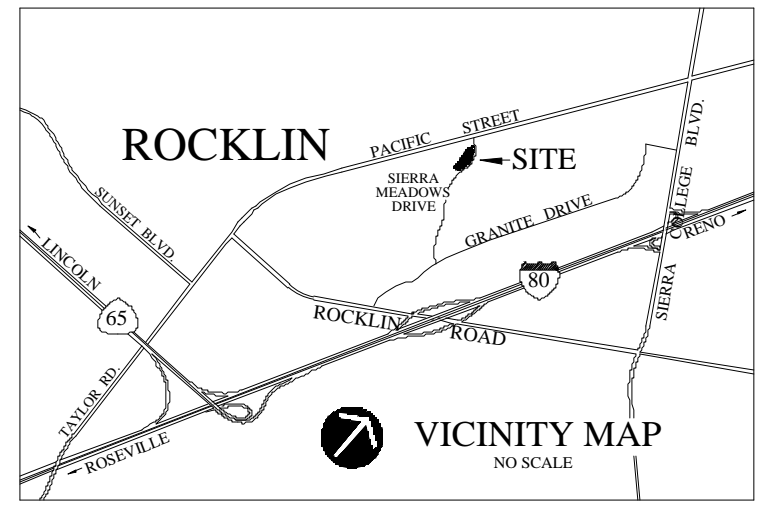


**MILCO  
BUSINESS PARK  
ROCKLIN**

A QUALITY PROJECT OF



- MINUTES TO I-80 & ROSEVILLE
- 
- BUSINESS PARK ENVIRONMENT
- 
- ACROSS STREET FROM U.P.S. & ROCKLIN BOWL
- 
- HIGH TRAFFIC COUNT - 6,100 CARS PER DAY
- 
- PD-LI ZONING: (SHOWROOM, OFFICE, INDUSTRIAL)
- 
- SOME FENCED YARD AREAS AVAILABLE



**VICINITY MAP**  
NO SCALE