



Shops at Schaefer Park

2300 S Schaefer Hwy, Detroit, MI 48217



JMC MANAGEMENT LLC
A FULL SERVICE BROKERAGE AND MANAGEMENT FIRM

Trena Edmondson

JMC Management, LLC

24500 Northwestern Hwy, Suite 100, Southfield, MI 48075

Trena.edmondson@jmcmanagement.com

(586) 427-9410 Ext: 113



Shops at Schaefer Park

\$156.00 /SF/YR

Highly visible retail center just minutes from I-94. Excellent locations and access to both River Rouge and Detroit. Newly renovated interiors....

- newly renovated
- off street parking
- highway access



Rental Rate:	\$156.00 /SF/YR
Total Space Available:	4,481 SF
Max. Contiguous:	1,613 SF
Property Type:	Shopping Center
Center Type:	Strip Center
Stores:	4
Center Properties:	1
Frontage:	250' on Schaefer Hwy
Gross Leasable Area:	6,564 SF
Walk Score ®:	42 (Car-Dependent)
Transit Score ®:	36 (Some Transit)
Rental Rate Mo:	\$13.00 /SF/MO

1st Floor Ste Suite 1

1

Space Available	1,613 SF
Rental Rate	\$156.00 /SF/YR
Date Available	Now
Service Type	Modified Gross
Space Type	Relet
Space Use	Retail
Lease Term	Negotiable

1st Floor Ste Suite 2

2

Space Available	1,299 SF
Rental Rate	\$156.00 /SF/YR
Date Available	Now
Service Type	Modified Gross
Space Type	Relet
Space Use	Retail
Lease Term	Negotiable

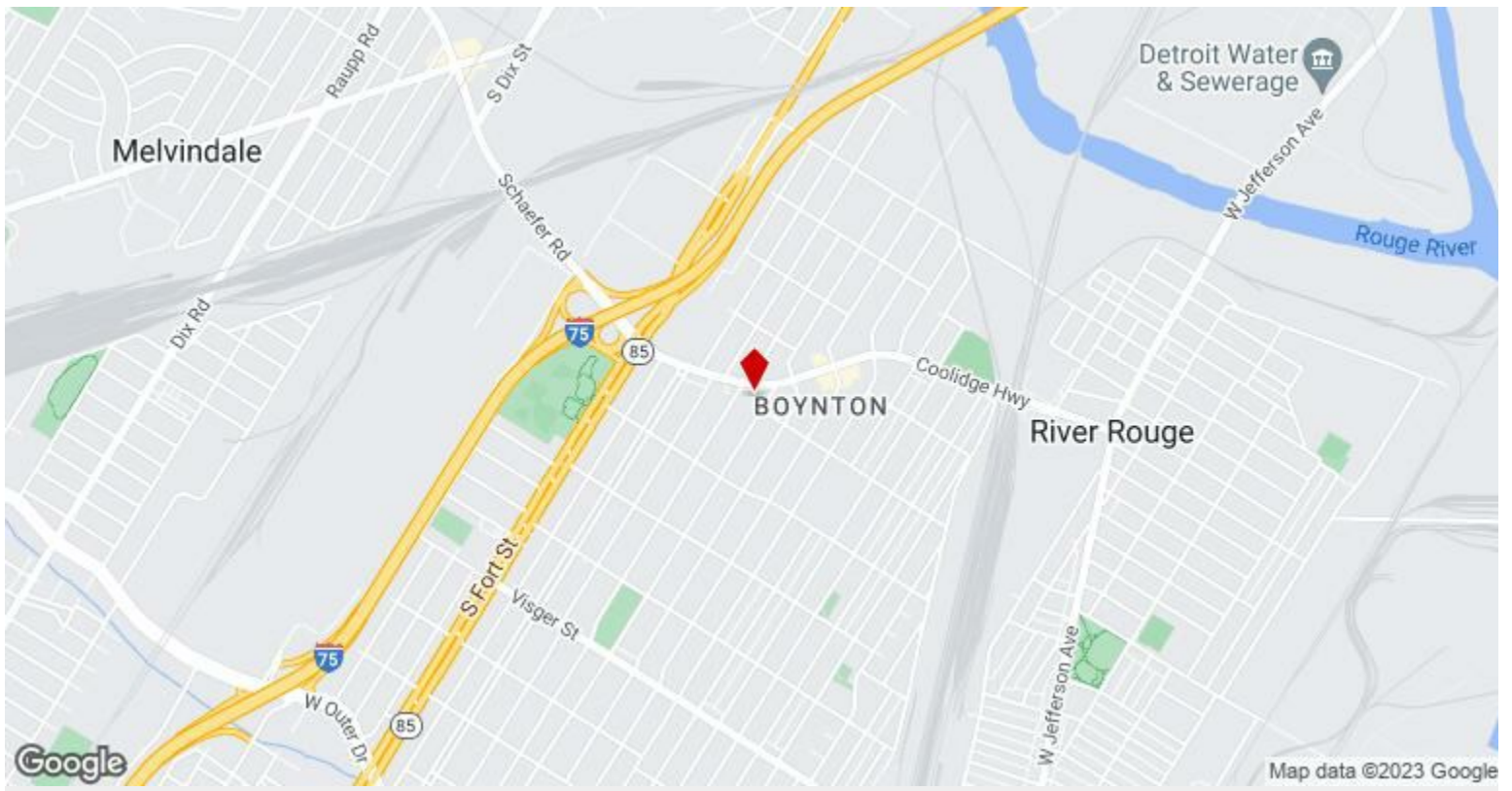
1st Floor Ste Suite 3

3

Space Available	1,569 SF
Rental Rate	\$156.00 /SF/YR
Date Available	Now
Service Type	Modified Gross
Space Type	Relet
Space Use	Retail
Lease Term	Negotiable

Major Tenant Information

Tenant	SF Occupied	Lease Expired
KQ Event Studio	-	



2300 S Schaefer Hwy, Detroit, MI 48217

Highly visible retail center just minutes from I-94. Excellent locations and access to both River Rouge and Detroit. Newly renovated interiors.

Property Photos



Property Photos



Building Photo

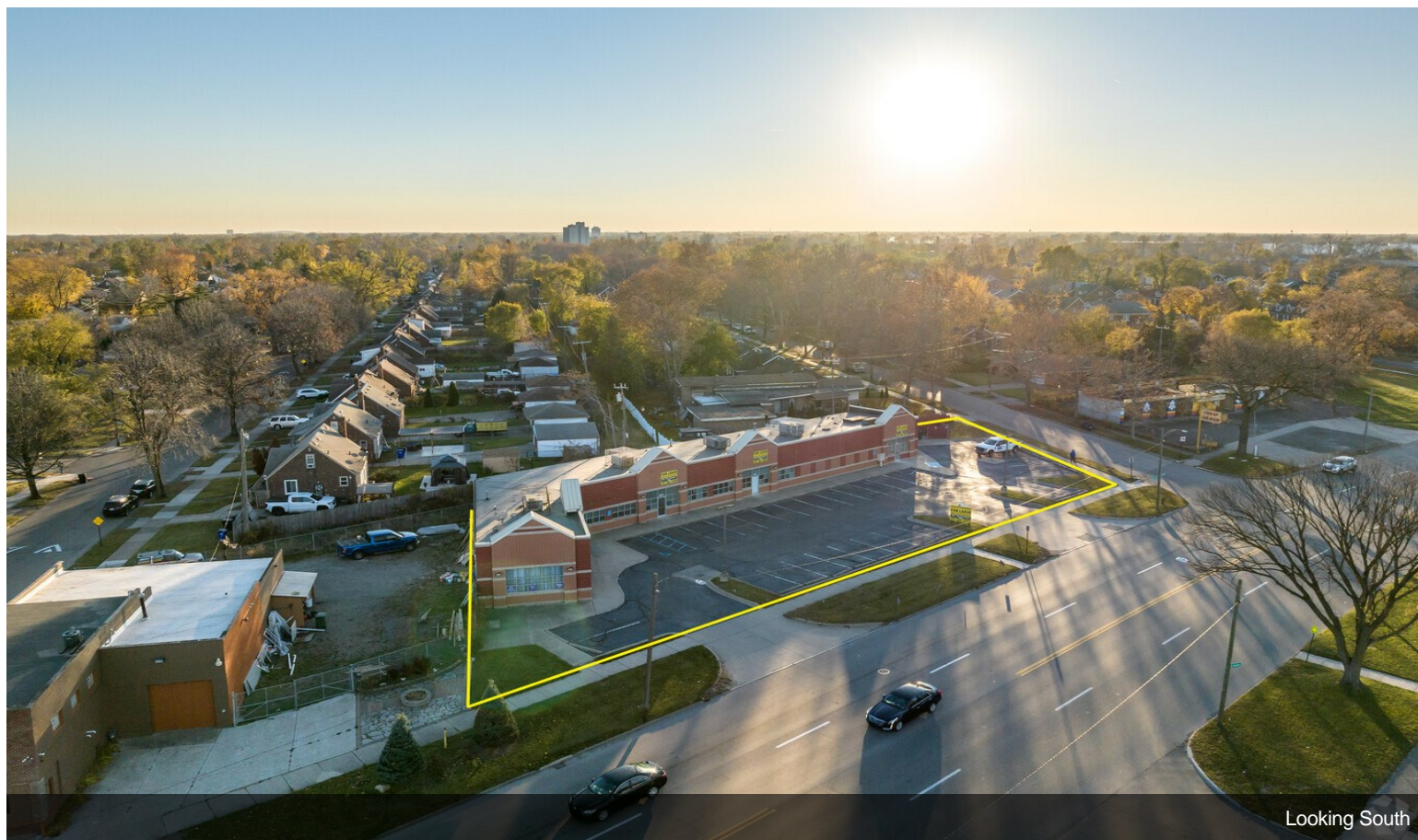


Building Photo

Property Photos



Building Photo



Looking South

Property Photos



Property Photos

