

# Westside Corners

W192 & Westside Blvd, Kissimmee, FL 34747



## PROPERTY HIGHLIGHTS

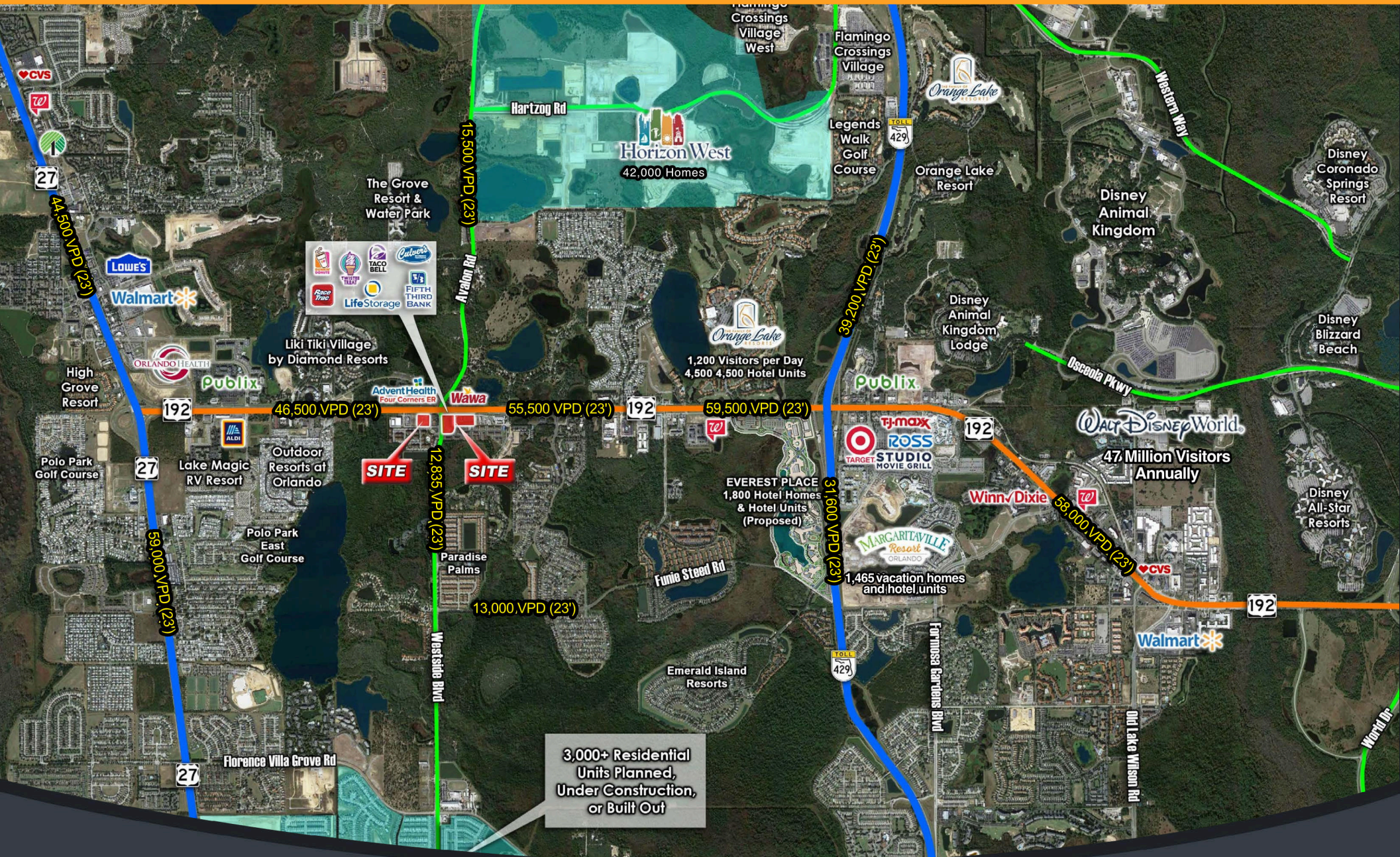
- Signalized intersection of W 192 and Avalon Rd (north bound) and Westside Blvd (south bound with extension underway to Champions Gate)
- High residential growth intersection with 6 schools within 3 miles
- ±2 Miles south of Horizons West, #3 fastest growing community in US
- ±5 Miles north of Champions Gate & Reunion, with ±12,000 Residential/ Lodging Units
- Excellent traffic counts (±55,500 AADT) and frontage along W192

2023 DEMOGRAPHICS	1 MILE	3 MILE	5 MILE
Population	4,452	44,862	81,996
Average HH Income	\$90,201	\$84,178	\$94,401
Median Age	41.06	36.09	36.97

## AREA RETAILERS



# Market Aerial

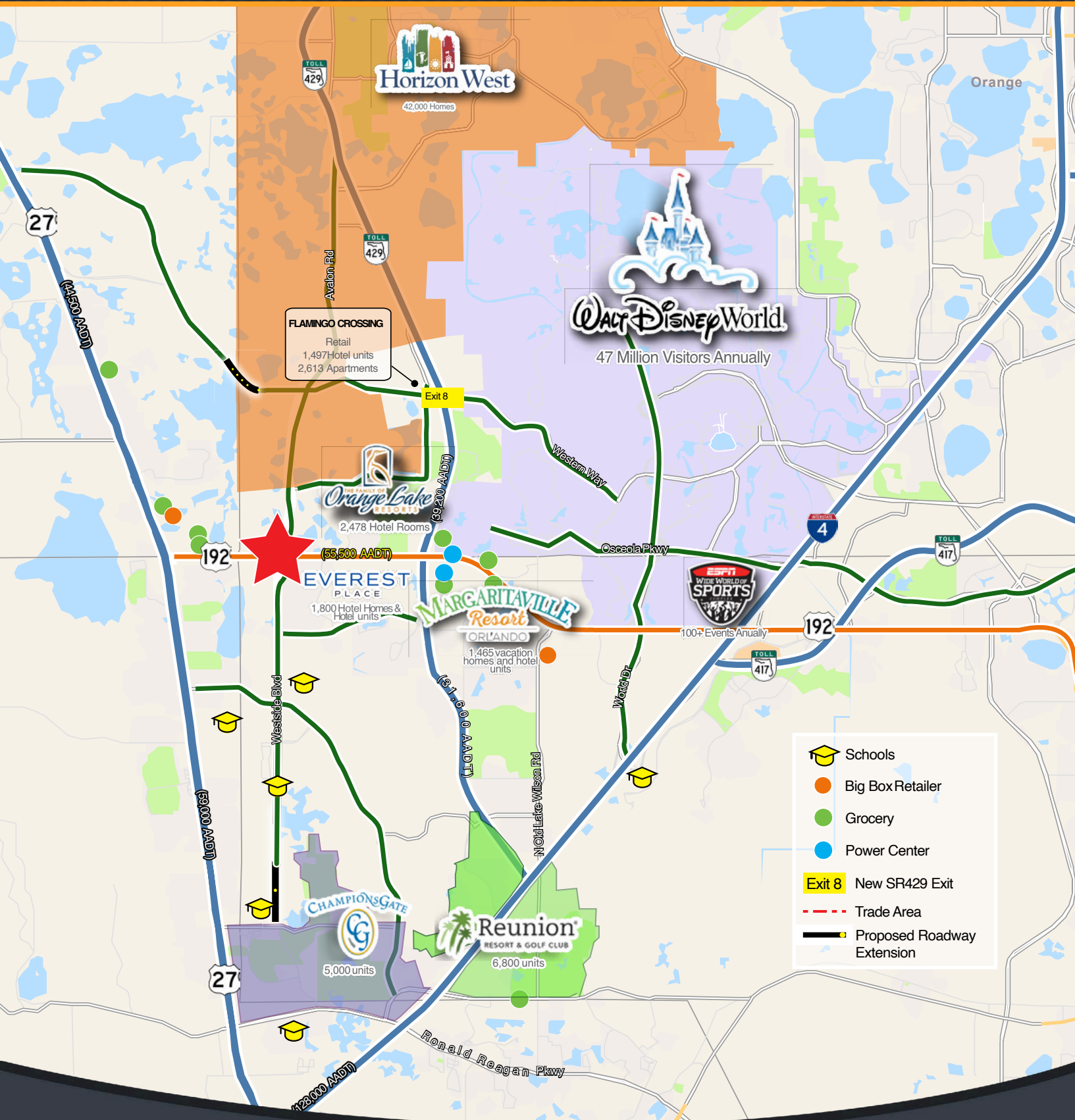


STACY MILLER MENENDEZ  
 321.303.0884  
 stacy@launchpad-advisors.com

RACHEL GREGORIE  
 407.404.3103  
 rachel@launchpad-advisors.com

**Launch Pad**  
 ADVISORS, LLC

# Trade Area Map



# Site Plan



STACY MILLER MENENDEZ  
321.303.0884  
stacy@launchpad-advisors.com

RACHEL GREGORIE  
407.404.3103  
rachel@launchpad-advisors.com

**Launch Pad**  
ADVISORS, LLC