



# FOR LEASE

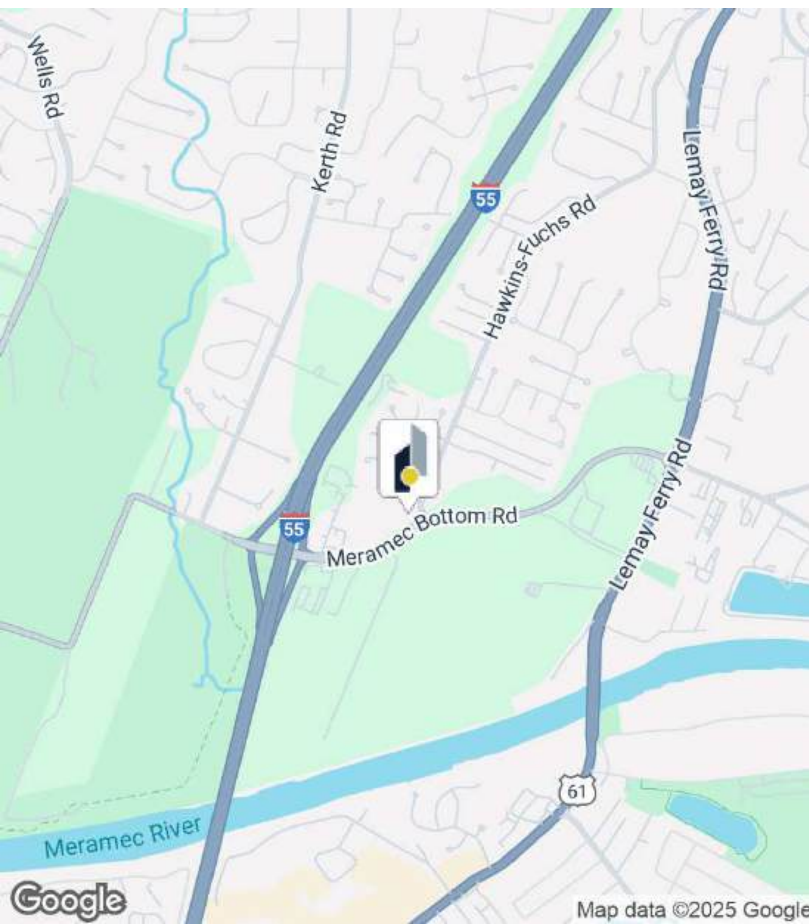
4401 & 4409 Meramec Bottom Road | Saint Louis, MO 63129



# 4401 & 4409 Meramec Bottom Road



**FOR LEASE:**  
**\$14.00 SF/YR**  
**NNN**



## Spaces

4401H

## Space Size

1,703 SF

## Property Highlights

- Single Story Multi-Tenant Class B Office/Medical/Retail Buildings
- Excellent access to I-55
- Signage Available
- Great turn-key options available with nice office finishes, restrooms, kitchenettes and exam room space

This information has been obtained from sources believed reliable but has not been verified for accuracy or completeness. You should conduct a careful, independent investigation of the property and verify all information. Any reliance on this information is solely at your own risk.

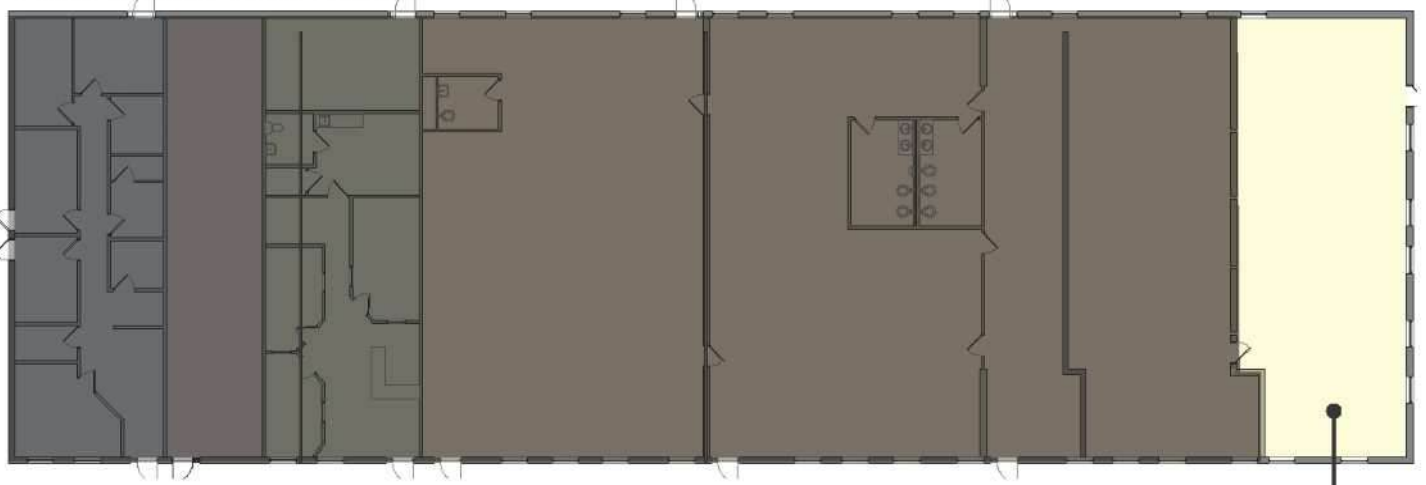




# Floor Plans

4401 & 4409 Meramec Bottom Road

4401 Meramec Bottom Road



Suite 4401H  
1,703 SF

# Broker Contacts

**Tyler Hyde**

Vice President | Brokerage

(314) 744-8984

thyde@intcre.com

**Austin Dazey**

Associate | Brokerage

(636) 346-3490

adazey@intcre.com