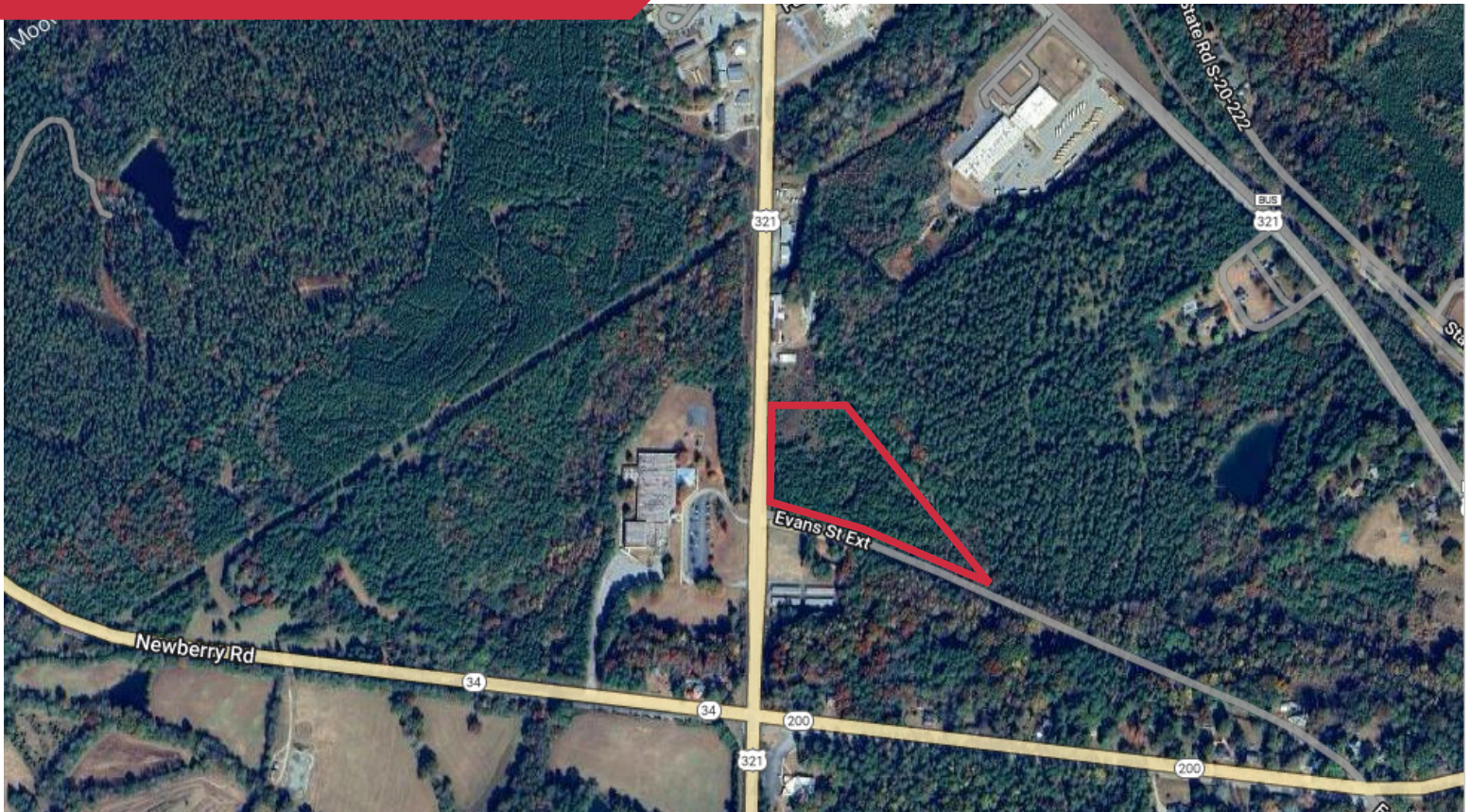


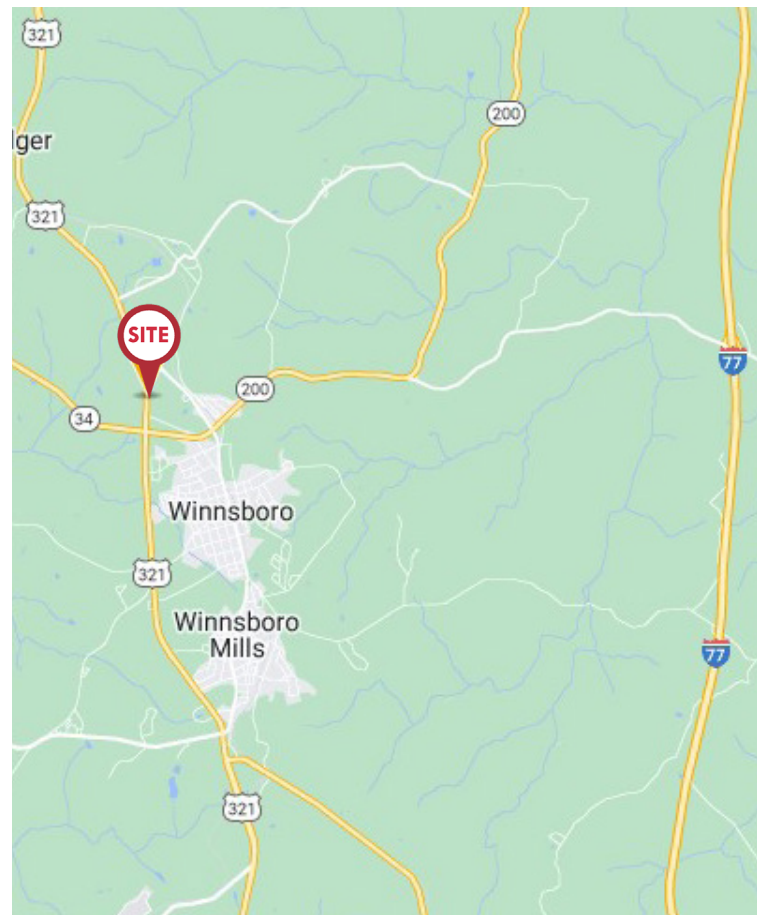
FOR SALE

1712 US Highway 321 Bypass N
Winnsboro, SC 29180



PROPERTY HIGHLIGHTS

- **Sale price: \$89,000**
- ±11.3 acres
- Level topography
- Fairfield County - Zoned: B-2
- Located across from Fairfield Magnet for Math/Science Elementary School
- All utilities available



NAI Earle Furman

Alex Campbell, CCIM
864 901 3869 | acampbell@naief.com

All information contained herein is from sources deemed reliable; however, no representation or warranty is made to the accuracy thereof.