

Downtown Office Available For Sublease

150 W. Jefferson Avenue
Detroit, MI 48226



11th Floor:

- 20,465 SF
- \$20.00/SF Modified Gross + Electricity
- Term through February 28, 2027
- Existing but covered internal stairway could be opened to create connection between 11th and 12th floors

12th Floor:

- 20,465 SF
- \$20.00/SF Modified Gross + Electricity
- Term through February 28, 2027
- Occupancy Date: March 1, 2025
- Plug and Play with potential inclusion of furniture
- Existing but covered internal stairway could be opened to create connection between 11th and 12th floors

14th Floor:

- 6,785 SF
- \$20.00/SF Modified Gross + Electricity
- Term through February 28, 2027
- Plug and Play with Furniture Included

Andrew Baines

Vice President

+1 (248) 351 – 2010

Andrew.Baines@cbre.com

About the Building

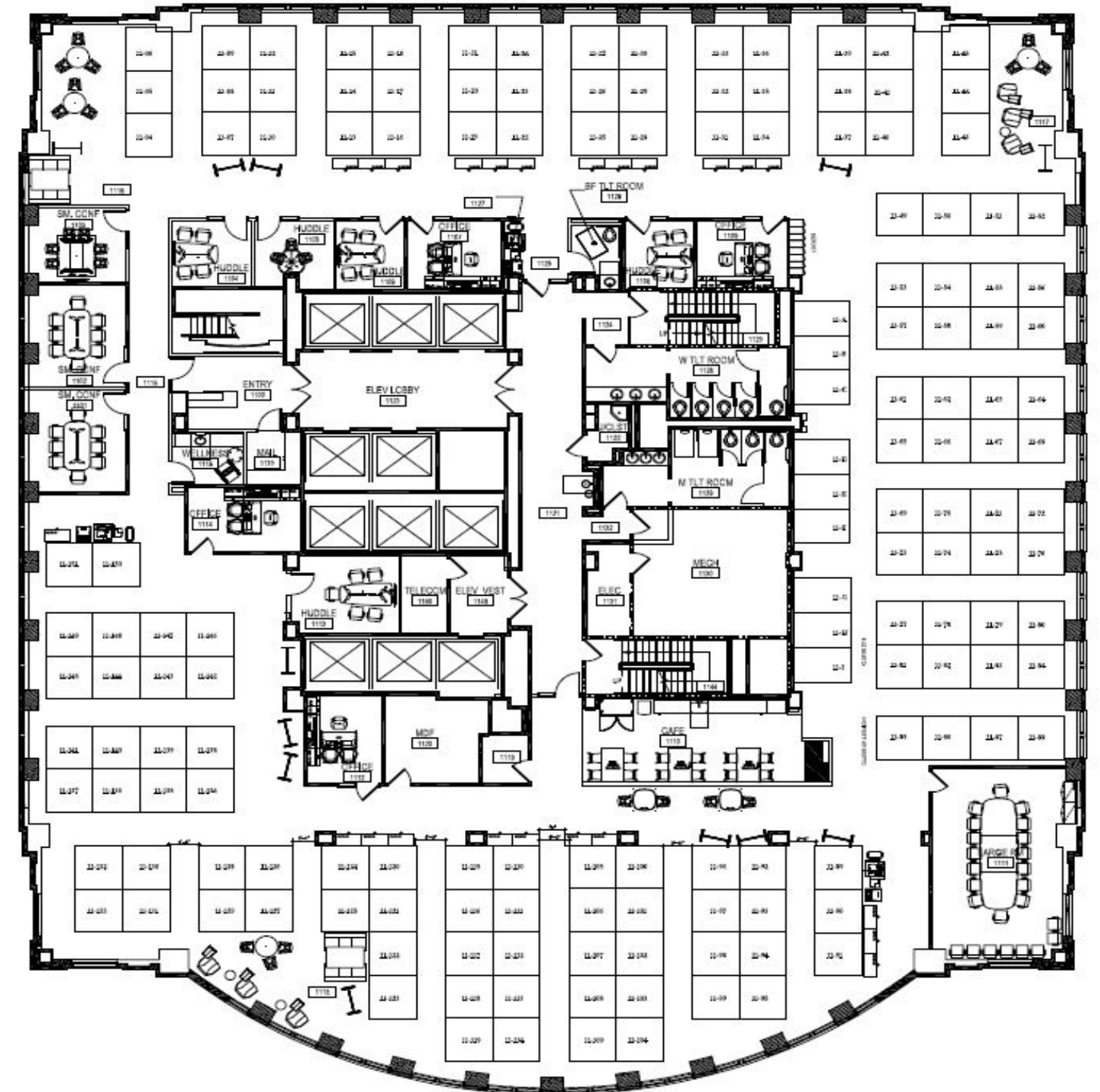
- Attached, Covered Parking Available
- Building amenities include Restaurant, Retail, Common Outdoor Terrace & Fitness Center, Detroit People Mover Station
- Premier Detroit Location Within the Central Business District
- Within Walking Distance to Some of Downtown Detroit's Newest & Finest Restaurants



11th Floor

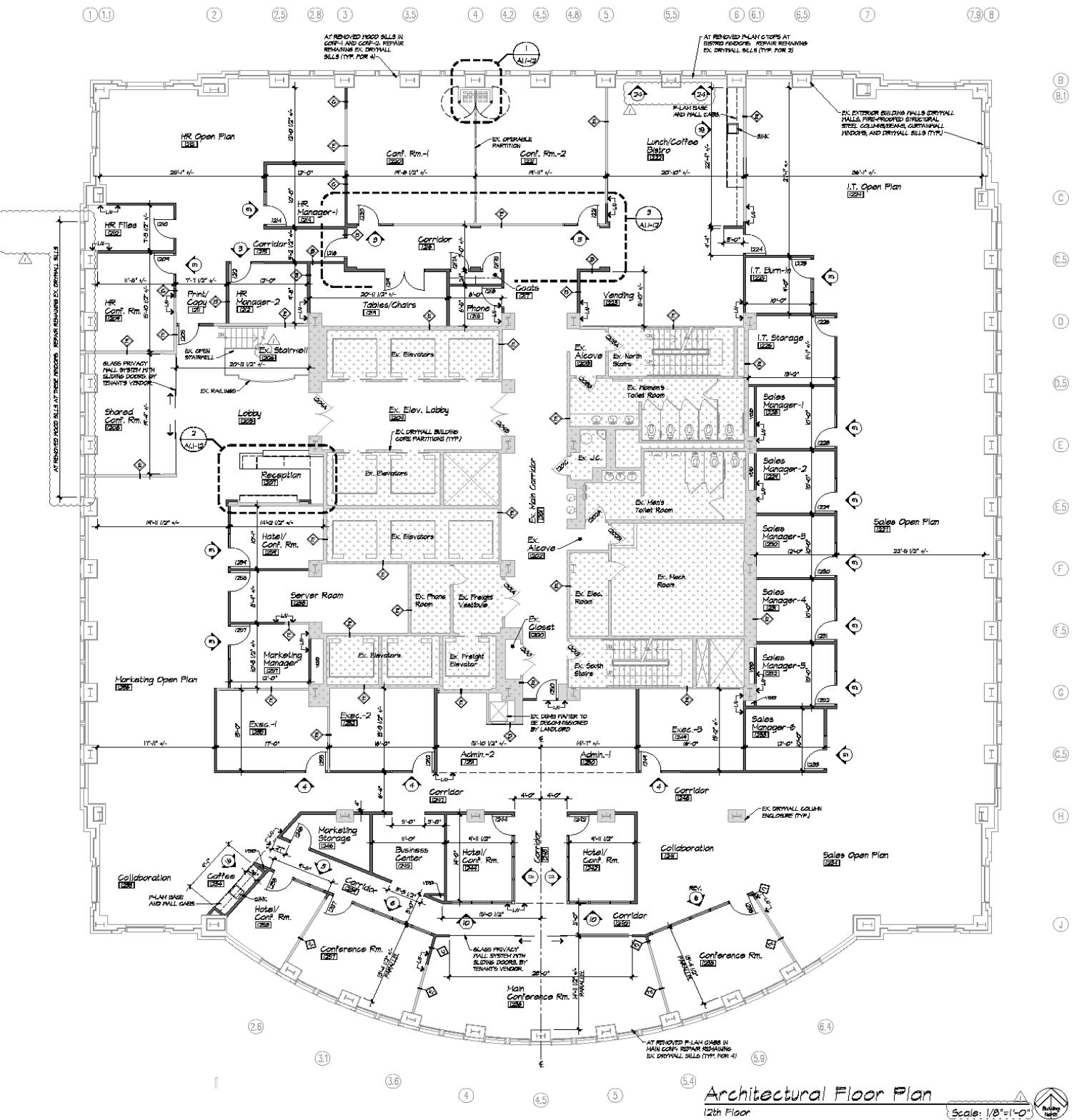
- 20,465 Square Feet
- Rental Rate: \$20.00/SF Modified Gross + Electricity
- Term through February 28, 2027
- Existing but covered internal stairway could be opened to create connection between 11th and 12th floors

*Former as-built. No furniture currently in the suite.



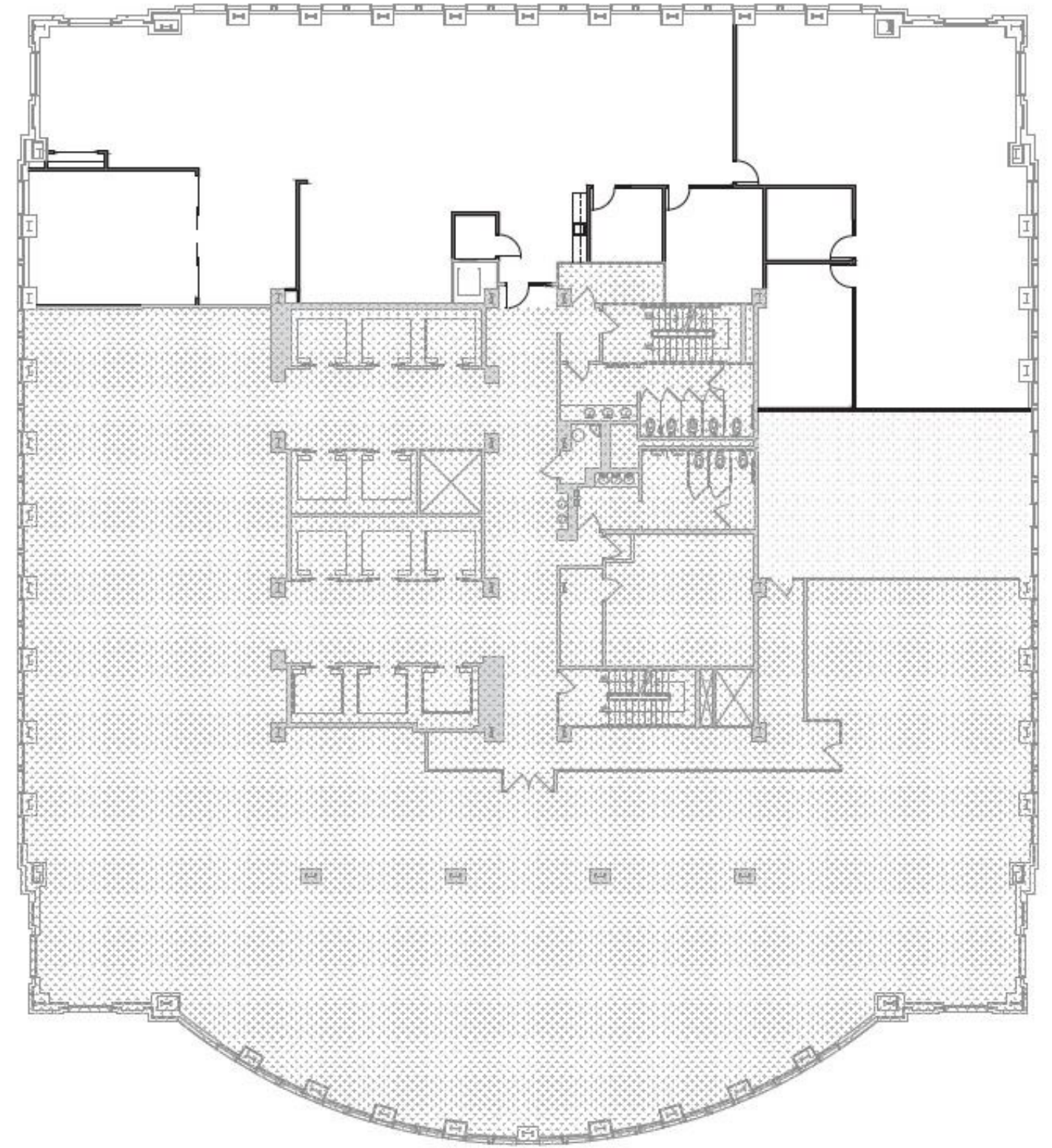
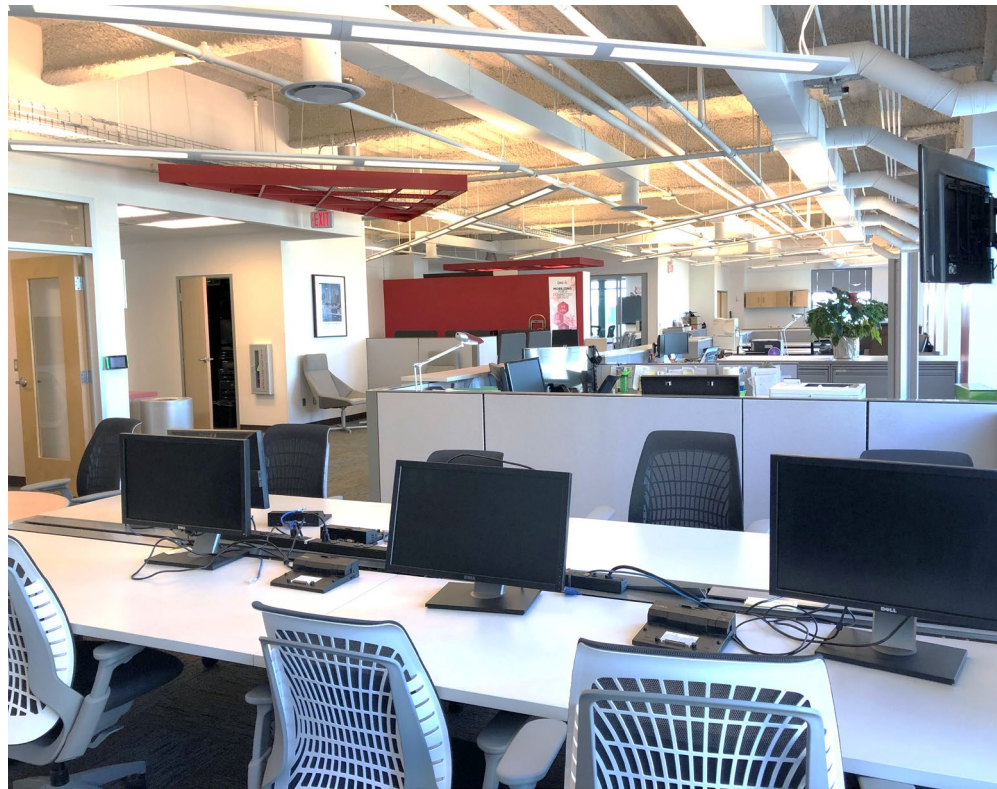
12th Floor

- 20,465 Square Feet
- Rental Rate: \$20.00/SF Modified Gross + Electricity
- Term through February 28, 2027
- Occupancy Date: March 1, 2025
- Plug and Play with potential inclusion of furniture
- Existing but covered internal stairway could be opened to create connection between 11th and 12th floors



14th Floor

- 6,785 Square Feet
- Rental Rate: \$20.00/SF Modified Gross + Electricity
- Term through February 28, 2027
- Plug and Play Space with Furniture Included



150 W. Jefferson Avenue
Detroit, MI 48226

For Sublease

Property Location:

150 W. Jefferson Avenue - Detroit, MI 48226

Restaurants and Retail:

1

Townhouse

2

Dime Store

3

Texas De Brazil

4

Shake Shack

5

London Chop House

6

Prime and Proper

7

Starbucks

8

Potbelly

9

La Lanterna

10

San Morello

11

The Brakeman

12

The Old Shillelagh

13

Pegasus Taverna

14

Dunkin’

15

Five Iron Golf

16

Motor City Kitchen

17

Buffalo Wild Wings

18

Lululemon

19

H&M

20

Nike

Points of Interest:

Campus Martius Park

GM Renaissance Center

Hudson’s Site

The Book Tower

Monroe Street Midway

A detailed map of downtown Detroit, Michigan. A red star icon marks the location of 150 W. Jefferson Avenue. Numerous blue circular markers with white numbers (1-23) are scattered across the map, corresponding to the list of restaurants and retail locations. Black circular markers indicate points of interest. The map shows major streets like W. Lafayette Blvd, Fort St W, and E. Fort St, as well as landmarks such as the Cadillac Center, Guardian Building, and Renaissance Center. The map also shows the Detroit River and the city's grid system.

Contact Us

Andrew Baines

Vice President
+1 (248) 351 – 2010

Andrew.Baines@cbre.com

© 2025 CBRE, Inc. All rights reserved. This information has been obtained from sources believed reliable but has not been verified for accuracy or completeness. CBRE, Inc. makes no guarantee, representation or warranty and accepts no responsibility or liability as to the accuracy, completeness, or reliability of the information contained herein. You should conduct a careful, independent investigation of the property and verify all information. Any reliance on this information is solely at your own risk. CBRE and the CBRE logo are service marks of CBRE, Inc. All other marks displayed on this document are the property of their respective owners, and the use of such marks does not imply any affiliation with or endorsement of CBRE. Photos herein are the property of their respective owners. Use of these images without the express written consent of the owner is prohibited.

www.cbre.com/detroit

The CBRE logo, consisting of the letters "CBRE" in a bold, dark blue, sans-serif font.