

BAYSIDE REALTY PARTNERS PRESENTS

# 1225 Crane Street Menlo Park

*Prime Location in Menlo Park*



TRASK LEONARD  
President and CEO  
650.533.2591  
[tleonard@baysiderp.com](mailto:tleonard@baysiderp.com)  
DRE#01152101



JARDA BRYCH  
Property Director  
650.517.2303  
[jbrych@baysiderp.com](mailto:jbrych@baysiderp.com)  
DRE#01974129

**BAYSIDE**  
REALTY PARTNERS  
MEDICAL/DENTAL PROPERTY SPECIALISTS

# 1225 Crane Street Menlo Park

## LOCATION

- Prime location in the heart of Menlo Park's business district
- Across the street from Menlo Medical Clinic
- One block from Santa Cruz Avenue
- Walking distance to Caltrain Menlo Park Station



## BUILDING

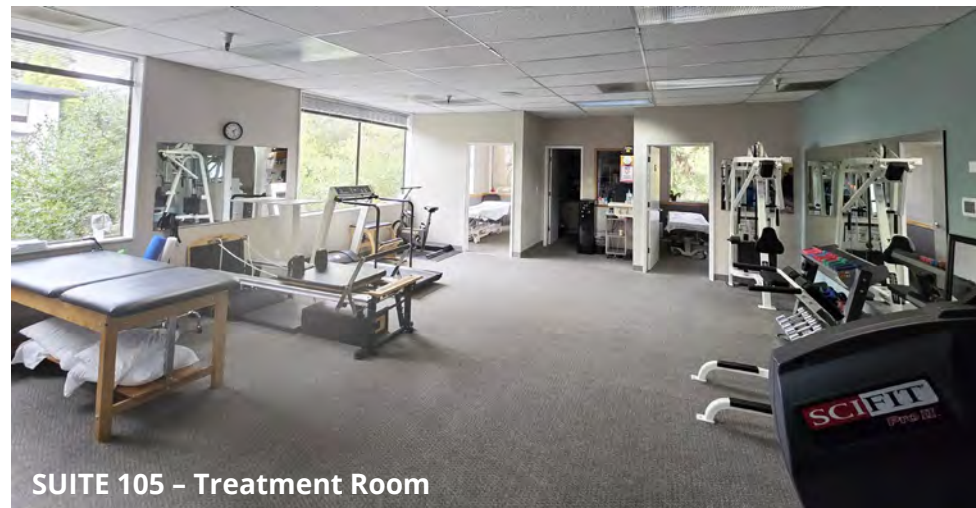
- Two-story medical, dental and professional building
- Highest parking ratio in market (6:1,000 sf)
- Diverse practice base
- New monument sign



# 1225 Crane Street Menlo Park



SUITE 105 + Reception



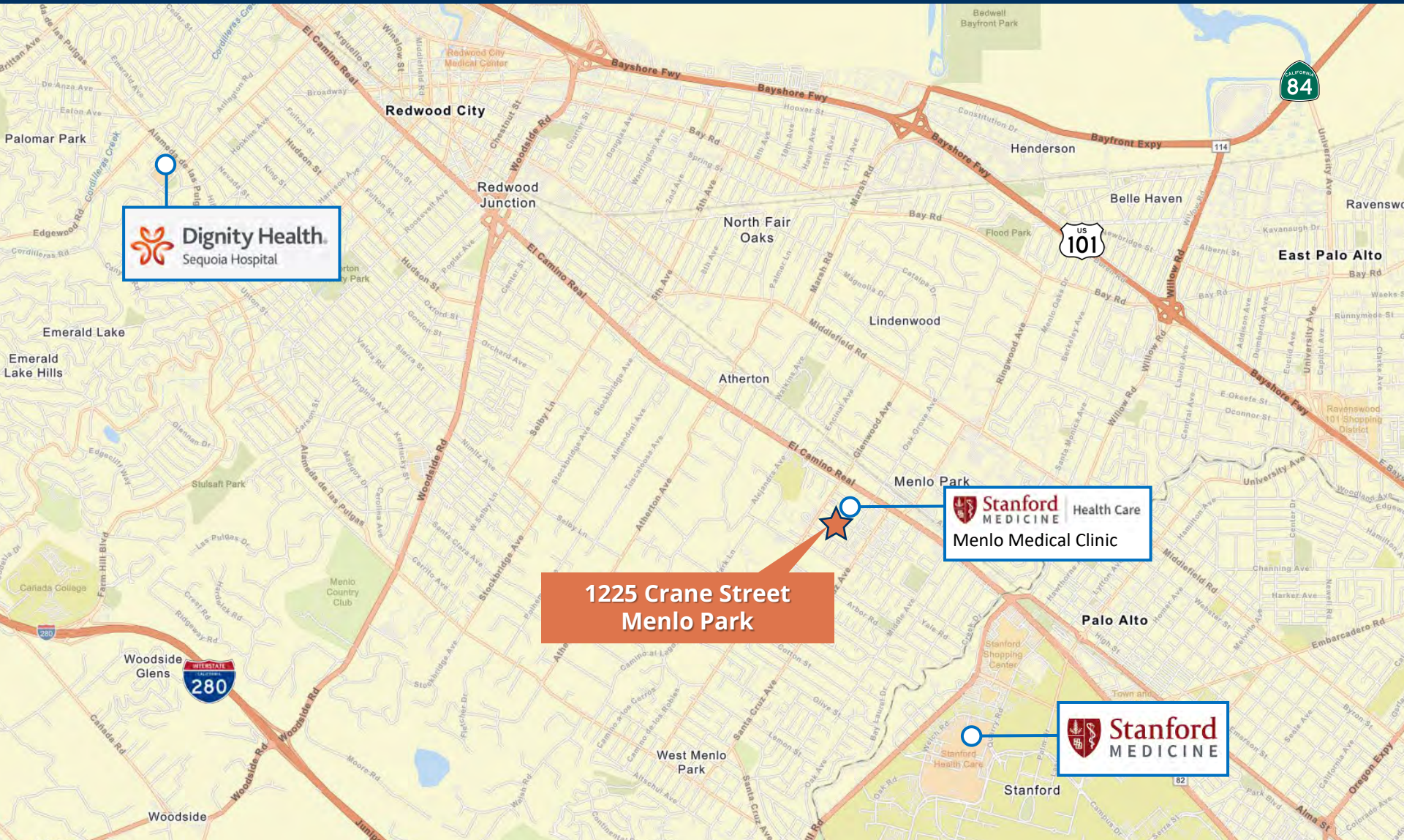
SUITE 105 - Treatment Room

# 1225 Crane Street Menlo Park

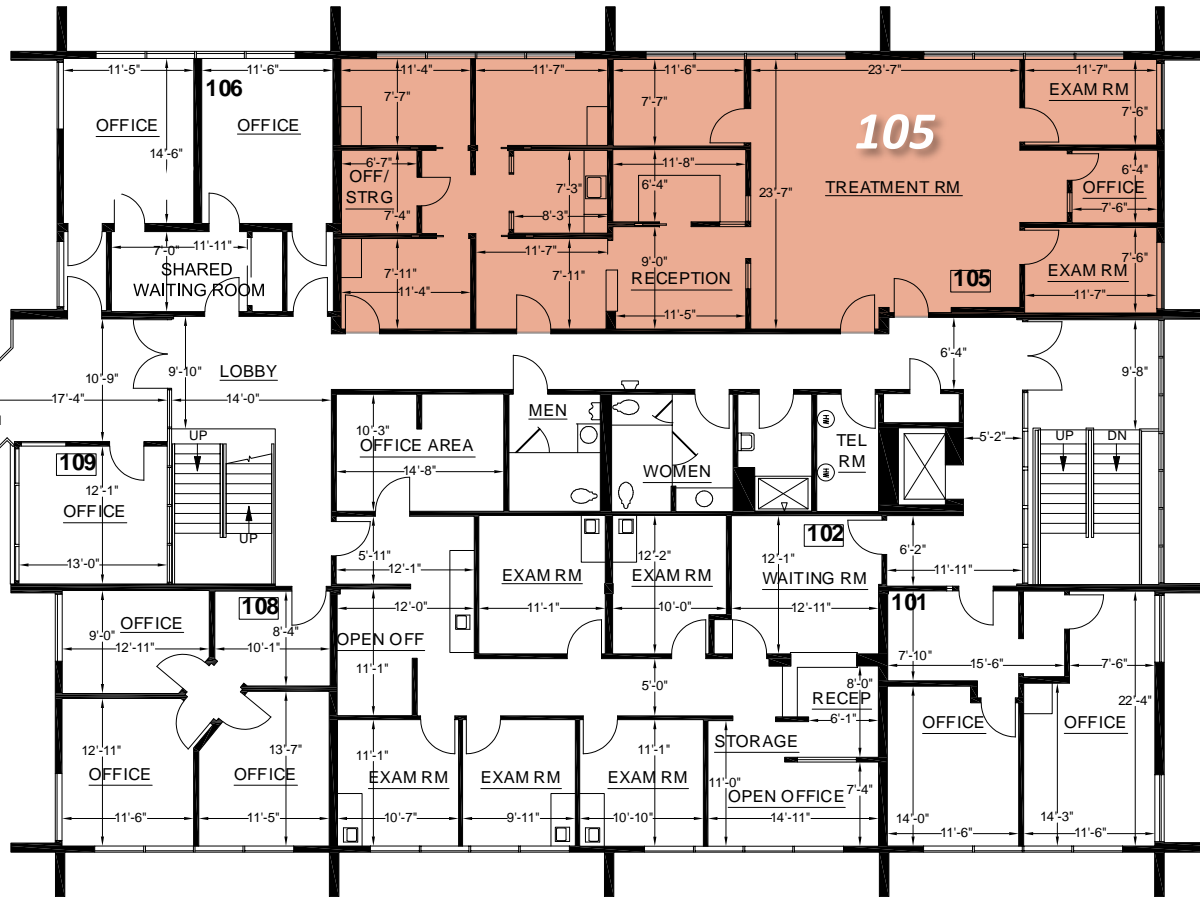


1225 Crane Street   Menlo Park, CA 94025	
1st Floor	2nd Floor
101	101
102	102
103	103
104	104
105	105
106	106
107	107
108	108
109	109
110	110
111	111
112	112
113	113
114	114
115	115
116	116
117	117
118	118
119	119
120	120
121	121
122	122
123	123
124	124
125	125
126	126
127	127
128	128
129	129
130	130
131	131
132	132
133	133
134	134
135	135
136	136
137	137
138	138
139	139
140	140
141	141
142	142
143	143
144	144
145	145
146	146
147	147
148	148
149	149
150	150

# 1225 Crane Street Menlo Park



# 1225 Crane Street Menlo Park

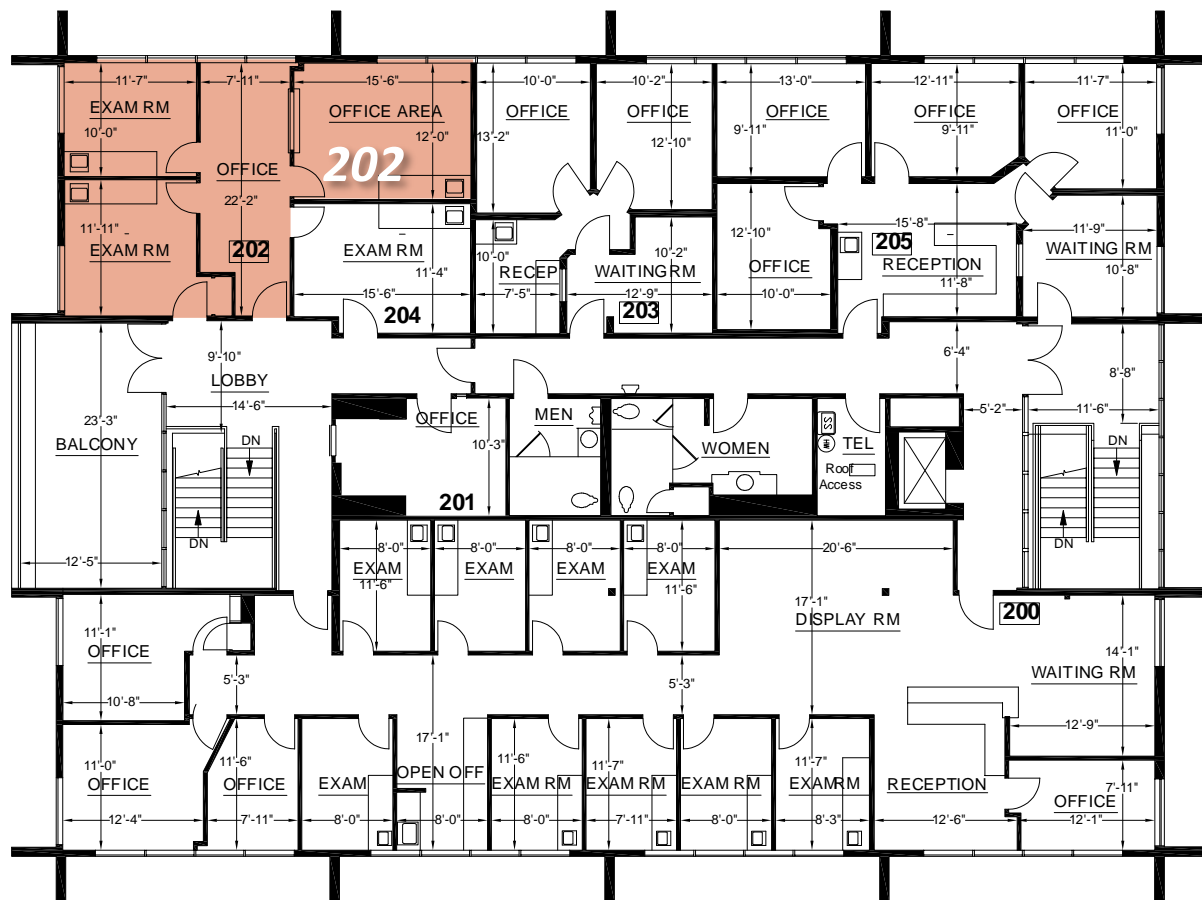


## FIRST FLOOR

Suite 105 2,105 RSF

6-7 offices/exam rooms, large treatment room, kitchen, reception/waiting area, storage, excellent glassline

# 1225 Crane Street Menlo Park



## SECOND FLOOR

Suite 202 1,154 RSF

Large waiting room and 3 exam rooms. Corner unit, great natural light, high parking ratio.

Medical office building in great downtown Menlo Park location

# Meet Your Expert Team



TRASK LEONARD

President and CEO

650.533.2591

[tleonard@baysiderp.com](mailto:tleonard@baysiderp.com)

DRE#01152101



JARDA BRYCH

Property Director

650.517.2303

[jbrych@baysiderp.com](mailto:jbrych@baysiderp.com)

DRE#01974129

# BAYSIDE REALTY PARTNERS

*The preeminent provider of management, leasing, construction management and accounting services for healthcare properties.*



## MARKET LEADER

- Leasing & Property Management
- Investment Sales
- Tenant Representation
- Construction Management
- Property Repositioning



## INFLUENTIAL NETWORK

- Institutional Investors
- Healthcare Systems and Healthcare Districts
- Physicians & Districts
- Private Investors



## DOMINANT FOOTPRINT

- 2 million SF leased & managed
  - 50+ MOB portfolio
  - 10,000-240,000 SF
  - 500,000 SF portfolio
- San Francisco's largest MOBs
- 950+ leases executed
- 500+ medical and dental tenants

**DOMINANT. EXPERT. INFLUENTIAL.**