



Each office independently owned and operated

FOR LEASE

INDUSTRIAL PROPERTY

# 12170 OLD GENTILLY RD

NEW ORLEANS, LA 70129

MAX JUGE - RE/MAX COMMERCIAL

3331 Severn Avenue | Suite 200

Metairie, LA 70002



PRESENTED BY:

**MAX JUGE**

Sales Associate

504.838.0001

LA #995716624

FOR LEASE

INDUSTRIAL PROPERTY

PROPERTY SUMMARY

# 12170 OLD GENTILLY RD

NEW ORLEANS, LA 70129



## PROPERTY DESCRIPTION

12170 Old Gentilly Road in New Orleans offers convenient access to I-10 and I-510, providing easy transportation to New Orleans, the newly planned port, and NASA's Michoud Assembly Facility.

This space is ideal for storage or distribution, with dock high doors arranged in a cross-dock pattern.

Please contact the agent for more information on this listing.

## OFFERING SUMMARY

Lease Rate:	\$7.00 SF/yr
Lease Type:	Gross
Available SF:	11,000 SF
Lot Size:	634,276 SF

DEMOGRAPHICS	0.3 MILES	0.5 MILES	1 MILE
Total Households	0	1	96
Total Population	1	5	268
Average HH Income	\$28,818	\$28,818	\$56,861



MAX JUGE - RE/MAX COMMERCIAL  
Each office independently owned and operated

**MAX JUGE**

Sales Associate

504.838.0001

mjuge@nolacommercial.com

LA #995716624

3331 Severn Avenue | Suite 200  
Metairie, LA 70002

All information contained herein is deemed reliable but not guaranteed. Each office independently owned and operated

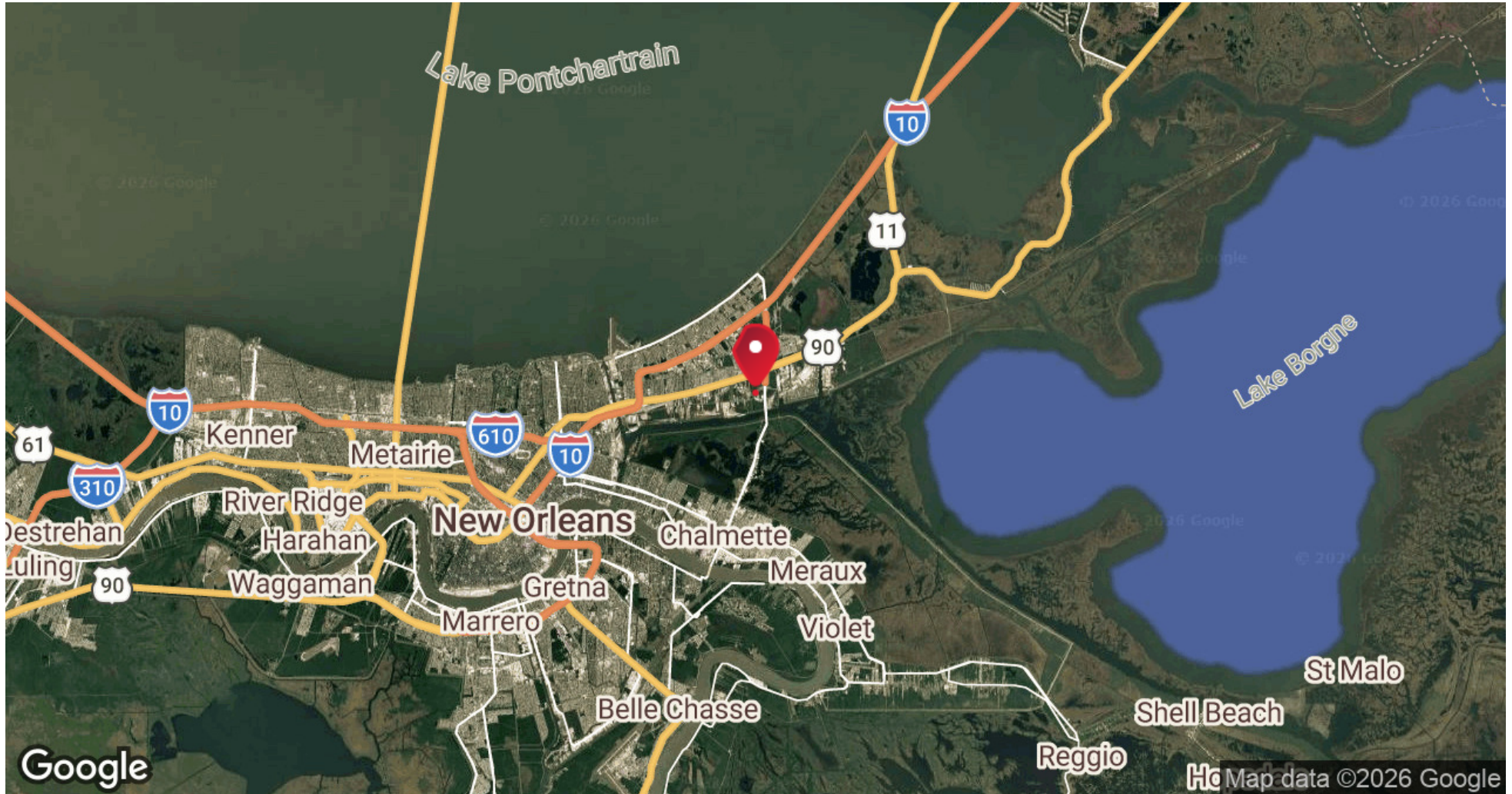
FOR LEASE

INDUSTRIAL PROPERTY

LOCATION MAP

# 12170 OLD GENTILLY RD

NEW ORLEANS, LA 70129



MAX JUGE - RE/MAX COMMERCIAL  
Each office independently owned and operated

**MAX JUGE**

Sales Associate

504.838.0001

mjuge@nolacommercial.com

LA #995716624

3331 Severn Avenue | Suite 200  
Metairie, LA 70002

All information contained herein is deemed reliable but not guaranteed. Each office independently owned and operated

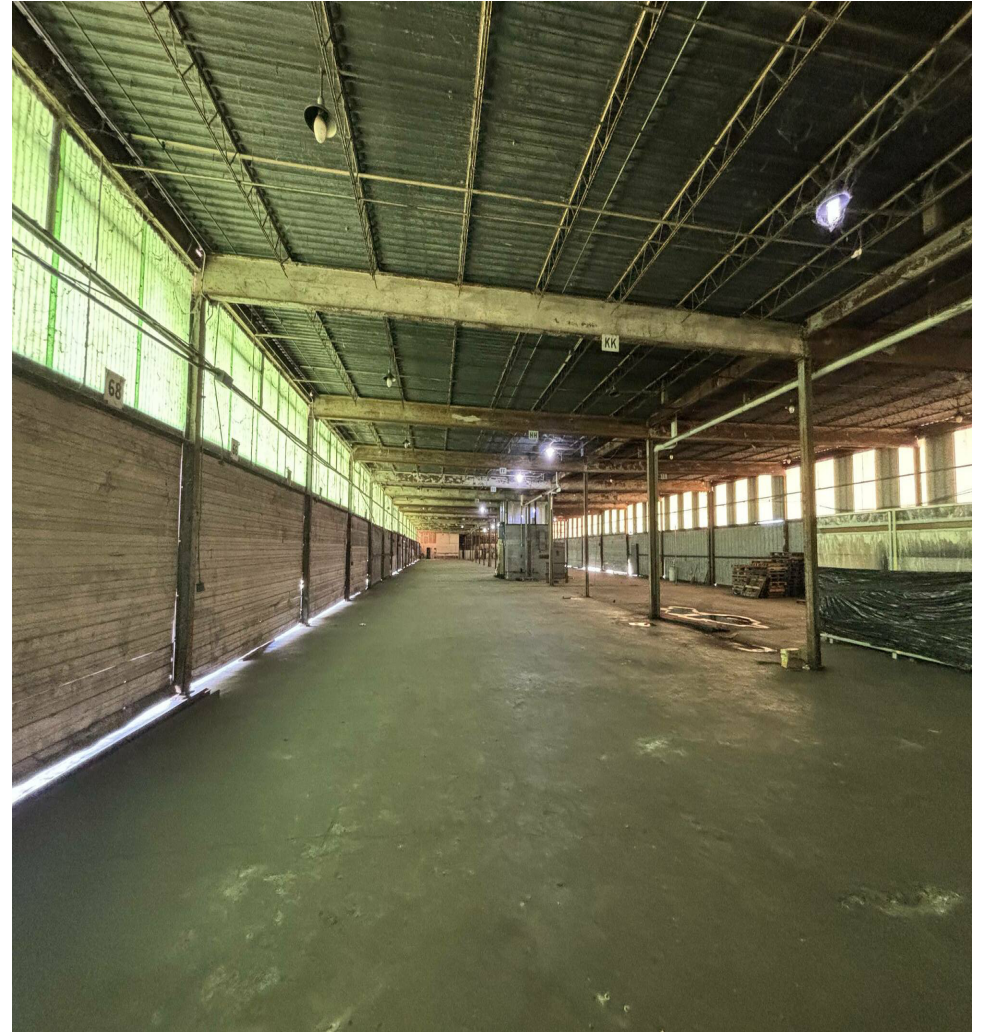
FOR LEASE

INDUSTRIAL PROPERTY

ADDITIONAL PHOTOS

# 12170 OLD GENTILLY RD

NEW ORLEANS, LA 70129



MAX JUGE - RE/MAX COMMERCIAL  
Each office independently owned and operated

**MAX JUGE**

Sales Associate

504.838.0001

[mjuge@nolacommercial.com](mailto:mjuge@nolacommercial.com)

LA #995716624

3331 Severn Avenue | Suite 200  
Metairie, LA 70002

*All information contained herein is deemed reliable but not guaranteed. Each office independently owned and operated*