

# 653

N TOWN CENTER DR

LAS VEGAS, NV 89144

MEDICAL OFFICE  
FOR LEASE

SUMMERLIN II  
1,758- 3,429 SF



**MIKE TYMCZYN**

VICE PRESIDENT  
702.216.2371 **DIRECT**  
miket@dcghealthcare.com  
BS.0147041



**HEALTHCARE**

**CORFAC**  
INTERNATIONAL

# PROPERTY HIGHLIGHTS

- On the campus of Summerlin Hospital Medical Center
- Professional property management
- Generous tenant improvement allowances
- Current specialties include: **Primary Care - Cardiology - Urology - Oncology - Orthopedics - Family Dentistry - Endocrinology - Neurological Surgery - Plastic Surgery**



# AREA MAP



SUMMERLIN PARKWAY



SUMMERLIN III

SUMMERLIN PARKWAY

SUMMERLIN I

SUMMERLIN II

N HUALAPAI WAY

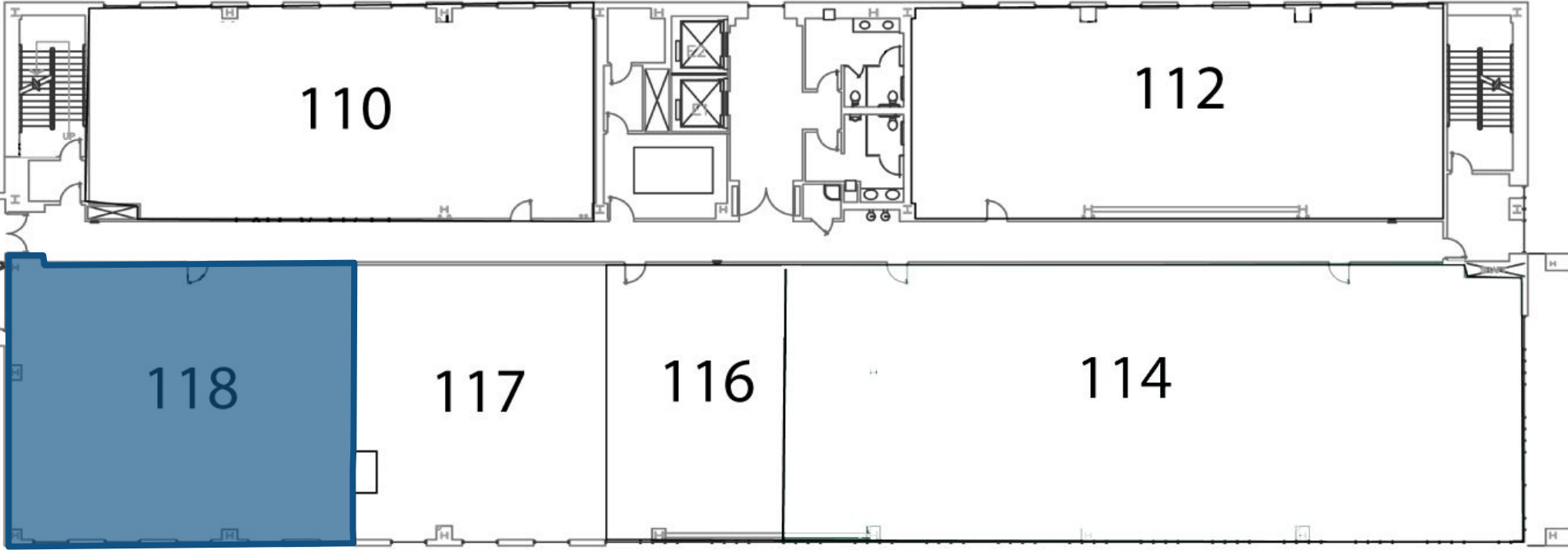
N TOWN CENTER DR



**FIRST FLOOR**

**AVAILABLE SUITES**

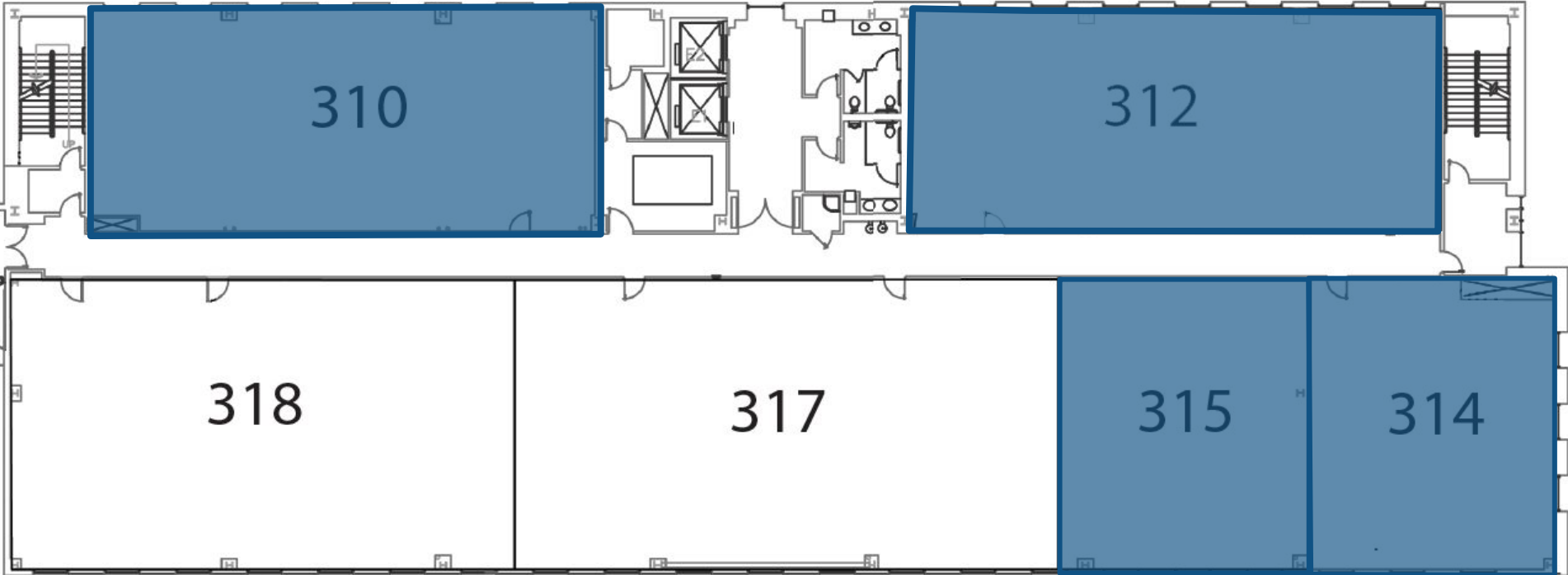
<b>SUITE 118</b> (Available 10/1/2026)	<b>2,336 SF</b>
---	-----------------



**THIRD FLOOR**

**AVAILABLE SUITES**

<b>SUITE 310</b>	<b>2,584 SF</b>
<b>SUITE 312</b>	<b>2,730 SF</b>
<b>SUITE 314</b> (Available 7/1/2026)	<b>1,725 SF</b>
<b>SUITE 315</b>	<b>1,758 SF</b>



# HOSPITAL SERVICES



## Cardiovascular

- Chest Pain Center
- Angioplasty
- Cardiac catheterization
- Pacemaker/defibrillator implants
- Bi-ventricular implants
- Peripheral vascular interventions
- Cardiovascular surgery
- Intravascular Ultrasound

## Endoscopic Procedures

## Laboratory Services

## Maternity Services

- Triage
- Antepartum
- Labor and Delivery
- Postpartum
- Level I-II-III Neonatal ICU

## Rehabilitation

- Inpatient Physical Therapy
- Speech Therapy
- Occupational Therapy
- Short-term inpatient rehabilitation unit

## Diabetes Treatment Center

- Inpatient care

## Dialysis

- Inpatient care

## Emergency Services

- Urgent and emergency care 24/7
- Pediatric ER
- Advanced primary stroke center

## Orthopedics

## Radiology

- Angiography
- CT scan
- MRI
- Nuclear Medicine
- X-ray
- Digital Mammography

## Surgery

- Inpatient
- Outpatient
- Robotic

## Wound Care

- Inpatient care
- Outpatient care
- Hyperbaric medicine

**MIKE TYMCZYN**

VICE PRESIDENT  
702.216.2371 **DIRECT**  
miket@dcghealthcare.com  
BS.0147041



**HEALTHCARE**

