

Yamhill Springs Vineyards

- ◆ Yamhill Carlton AVA
- ◆ 40 acres total
- ◆ 15acre vineyard
- ◆ 400 - 595 elevation
- ◆ Jory / Bellpine soils
- ◆ Pinot Noir, Chardonnay, Pinot Gris
- ◆ Additional vineyard suited land
- ◆ 3400 sq. ft. home
- ◆ \$1,300,000



All property boundaries are approximate

© 2018 Google



Oregon Vineyard Property

Vineyard Brokers

Since 1998

503-625-3000

www.oregonvineyardproperty.com

Premiere
PROPERTY
Group LLC



Yamhill Springs
Vineyards



Yamhill Springs Vineyards

Planting Block Map

Pinot Noir 115 -	2.73 acres
Pinot Noir WAD -	6.62 acres
Pinot Noir POM -	1.25 acres
Pinot Noir 777-	0.67 acres
Pinot Noir 113 -	0.78 acres
Pinot Gris -	2.53 acres
Chardonnay 108 -	0.50 acres
Total acres	15.0 acres

Pinot Noir
Pommard
Planted in 2018
4 X 7
1.25 acres

Pinot Gris
Planted in 1994
4 X 7
2.53 acres

Pinot Noir
115 - 3309
Planted in 2000
meter X 7
2.73 acres

Pinot Noir
Wadenswil
Planted in 1988 - 1989
4 X 7
6.62 acres

Pinot Noir
777
Planted in 1988
4 X 7
.67 acres

Pinot Noir
113
Planted in 1988
4 X 7
.78 acres

Each of these blocks has .25 acres of
Chardonnay 108 clone
Total approx. .5 acres

Greenfoot Rd

© 2018 Google



Oregon Vineyard Property

Vineyard Brokers
Since 1998
503-625-3000

Premiere
PROPERTY
Group, LLC

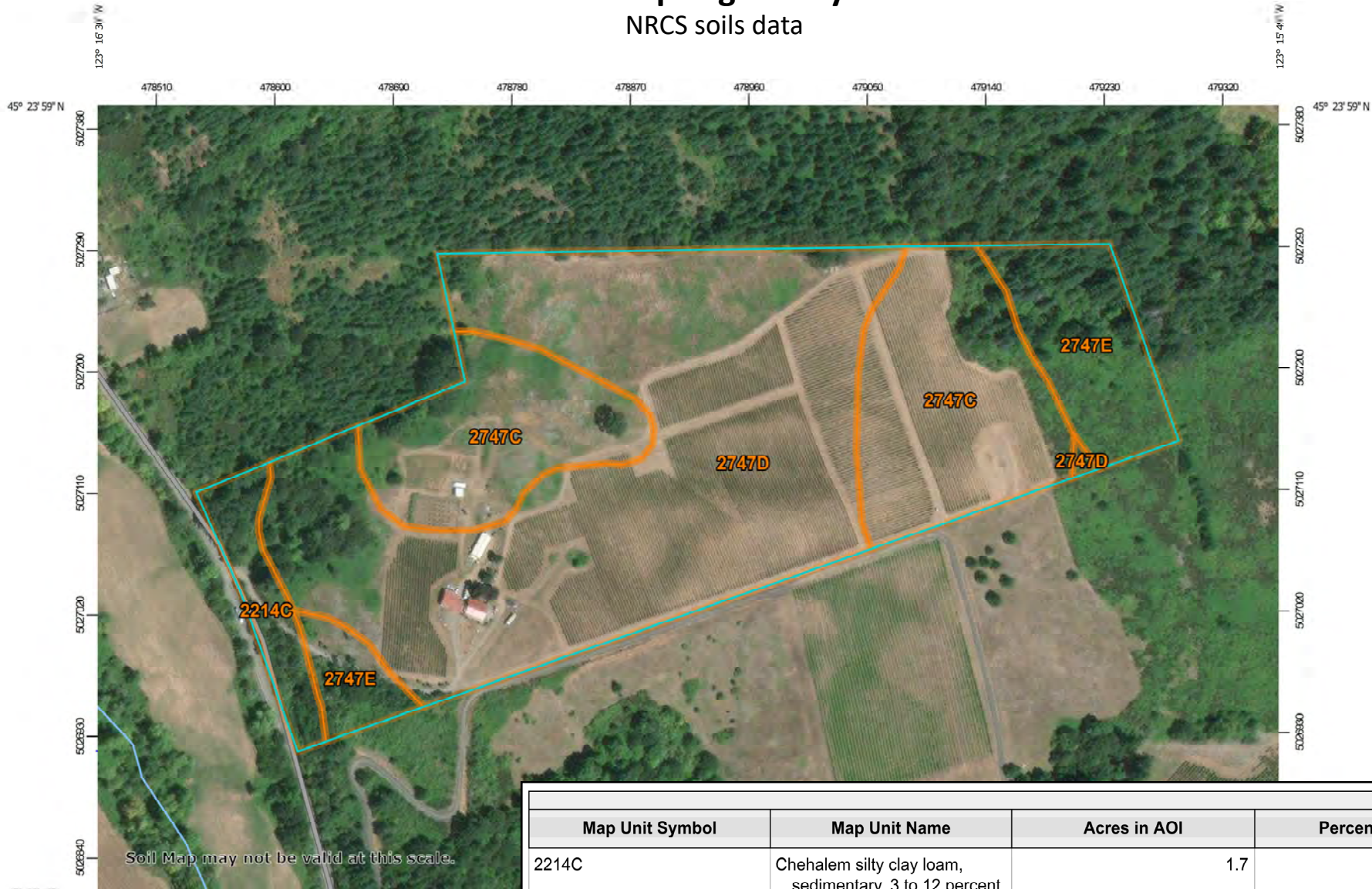


www.oregonvineyardproperty.com

All property boundaries are approximate
All acreages based on information provided by owner

Yamhill Springs Vineyards

NRCS soils data



Map Unit Symbol	Map Unit Name	Acres in AOI	Percent of AOI
2214C	Chehalem silty clay loam, sedimentary, 3 to 12 percent slopes	1.7	4.3%
2747C	Jory-Bellpine complex, 2 to 12 percent slopes	11.4	28.3%
2747D	Jory-Bellpine complex, 12 to 20 percent slopes	22.6	56.1%
2747E	Jory-Bellpine complex, 20 to 30 percent slopes	4.6	11.3%
Totals for Area of Interest		40.2	100.0%

Menefee
County Park

Severt Creek

NW Dobson Rd

NW Turner Creek Rd
Turner Creek

Hay Creek

NW Turner Creek Rd

Yamhill Springs
Vineyard

400

Greenhoot Rd

600

Hawn Creek

Hawn Creek

Wildwood Creek

Wildwood Creek

NW Greenhoot Rd

NW Turner Creek Rd

Turner Creek

NW Turner Creek Rd


Terrain

View topography and elevation



Oregon Vineyard Property
 Vineyard Brokers
 Since 1998
 503-625-3000
www.oregonvineyardproperty.com

Premiere
PROPERTY
 Group LLC



All property boundaries are approximate

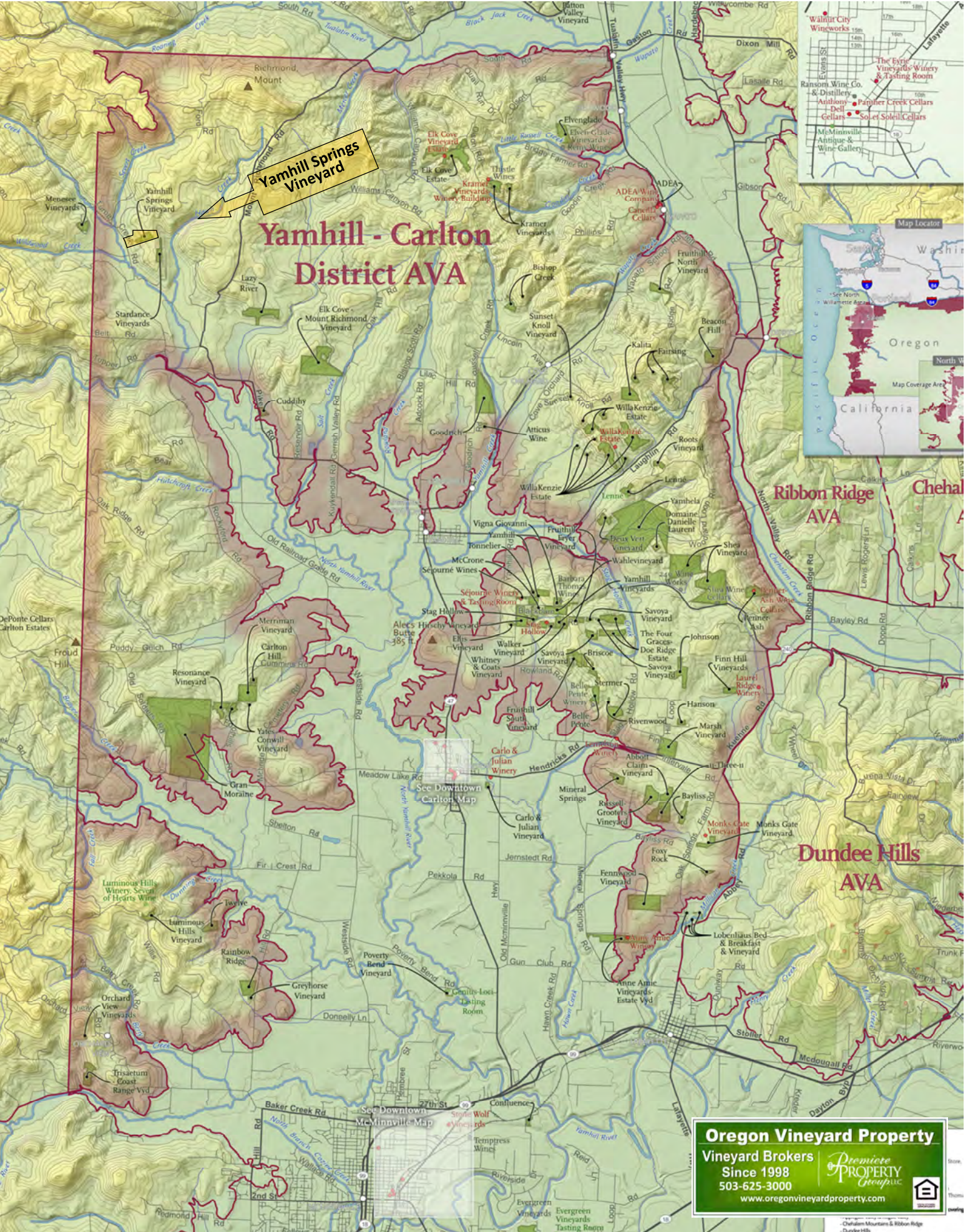
In the Coastal Foothills
Yamhill Carlton AVA





Yamhill - Carlton District AVA

Yamhill Springs Vineyard



Oregon Vineyard Property
 Vineyard Brokers
 Since 1998
 503-625-3000
www.oregonvineyardproperty.com

-Chalaim Mountains & Ribbon Ridge
-Dundee Hills



Oregon Vineyard Property
 Vineyard Brokers
 Since 1998
 503-625-3000
www.oregonvineyardproperty.com

Premiere PROPERTY Group

