

**4528 Rockbridge Rd - Stone Mountain, GA**



## **4-Building Church Property For Sale**

3.39 ± Acres

**AVISON  
YOUNG**

1.



# Subject Information



**Sales Price:** \$1,997,421

**Land Area** ± 3.39

**# of Buildings** 4

**Parcel Numbers** 18-041-01-043, 18-041-08-034, 18-041-08-035, 18-041-08-033, 8-041-08-027, 18-041-08-028, 18-041-08-029, 18-041-08-026, 18-041-08-030, 18-041-08-049, 18-041-08-048

**Location Address** 4528 ROCKBRIDGE RD  
STONE MOUNTAIN GA 30083

**Property Class** E2 - RELIGIOUS PROPERTY

**Neighborhood** 9149

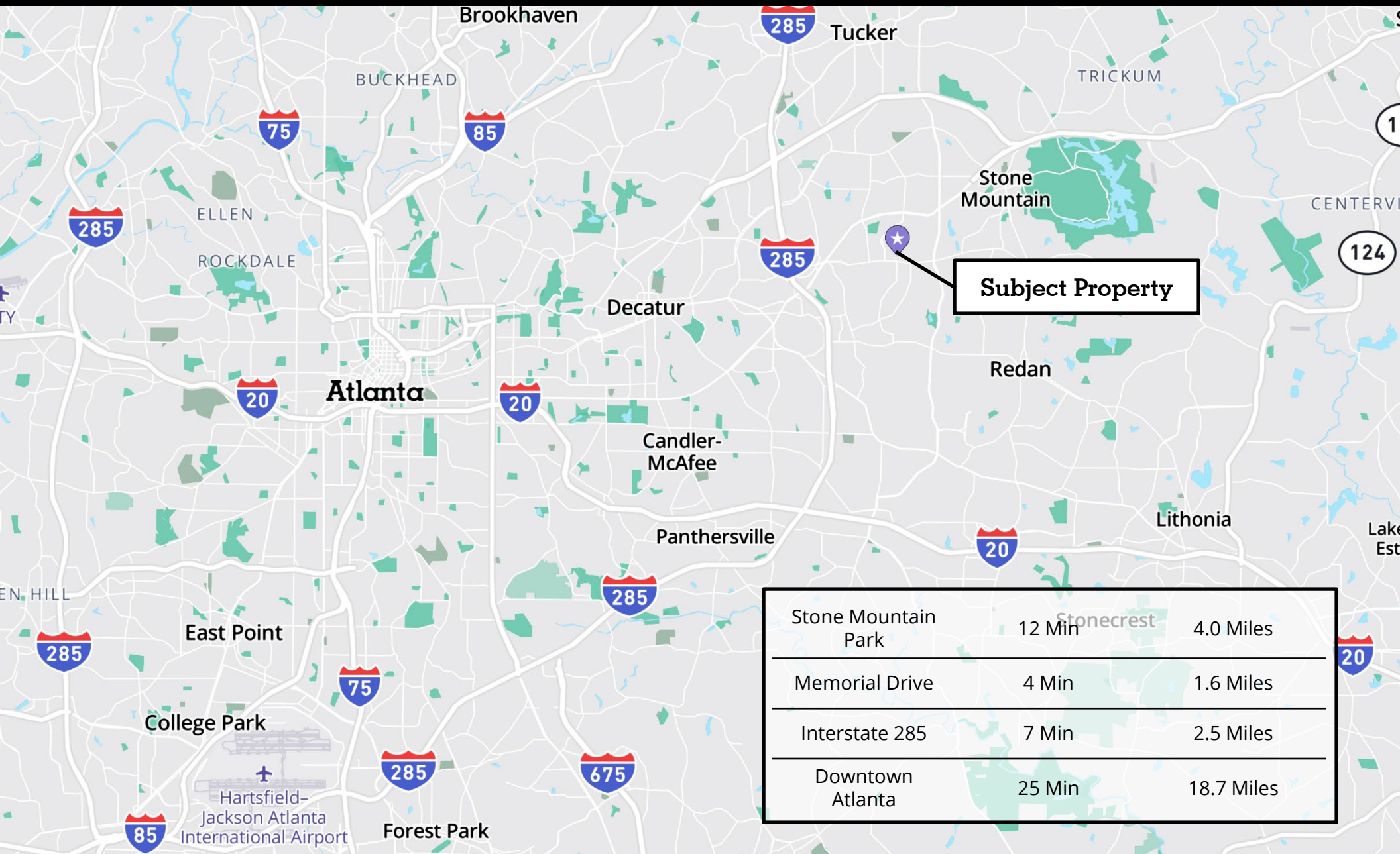
**Tax District** 74

**Year Built** 1959

**Jason Holland, CCIM**  
Senior Vice President  
+1 404 840 2669  
[jason.holland@avisonyoung.com](mailto:jason.holland@avisonyoung.com)

**Nick Steen**  
Senior Associate  
+1 704 905 1447  
[nick.steen@avisonyoung.com](mailto:nick.steen@avisonyoung.com)

**Soern Osborne**  
Associate  
+1 (404) 807-8239  
[soern.osborne@avisonyoung.com](mailto:soern.osborne@avisonyoung.com)



**Subject Property**

|                     |        |            |
|---------------------|--------|------------|
| Stone Mountain Park | 12 Min | 4.0 Miles  |
| Memorial Drive      | 4 Min  | 1.6 Miles  |
| Interstate 285      | 7 Min  | 2.5 Miles  |
| Downtown Atlanta    | 25 Min | 18.7 Miles |

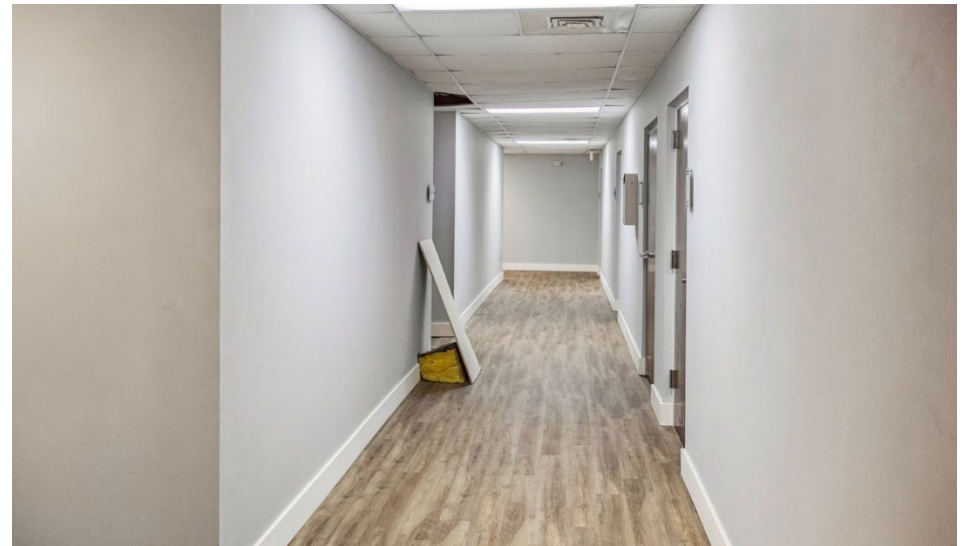
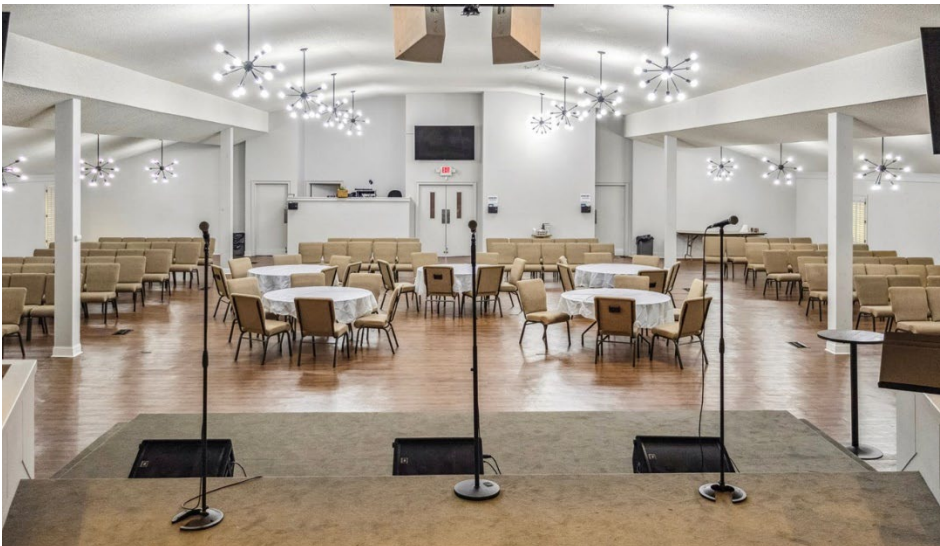


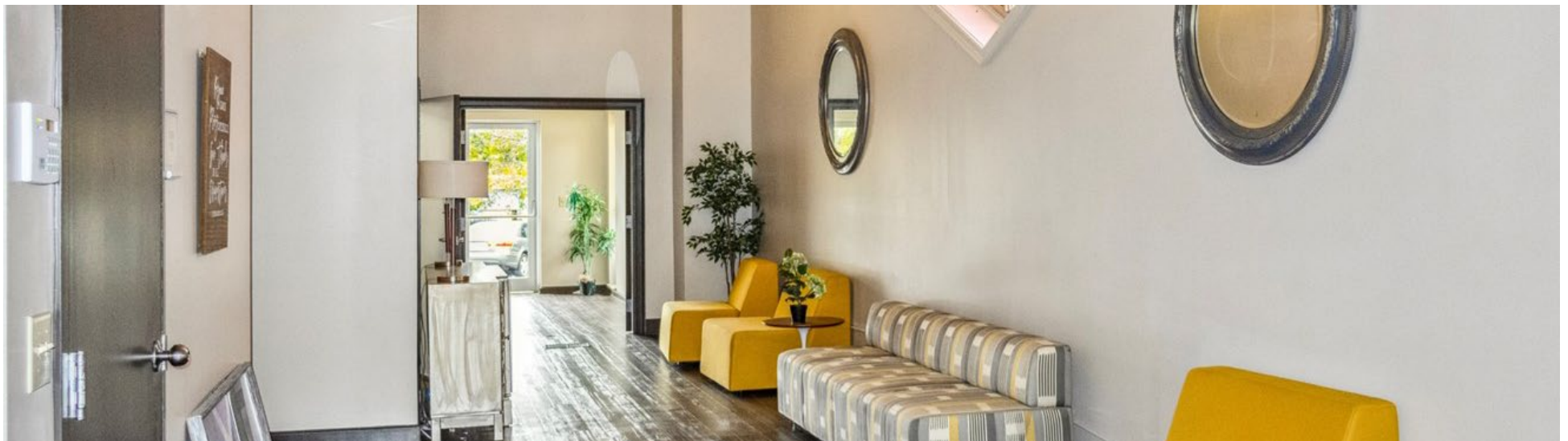


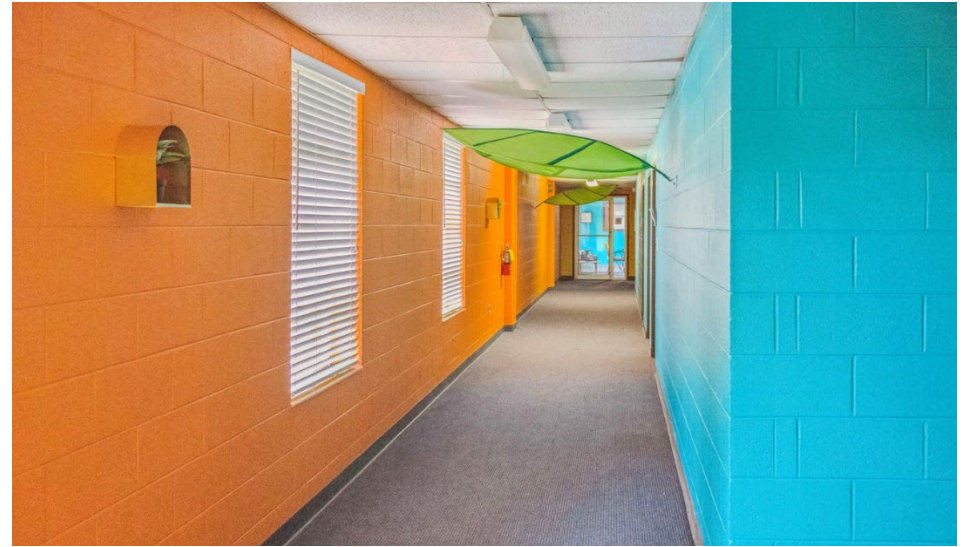












# Demographic and Income Profile

## DEMOGRAPHIC SUMMARY

4528 Rockbridge Rd, Stone Mountain, Georgia, 30083

Ring of 5 miles

### KEY FACTS

241,932

Population



93,139

Households

37.3

Median Age

\$54,270

Median Disposable Income

### EDUCATION

8.8%

No High School Diploma



24.8%  
High School Graduate



27.4%  
Some College/  
Associate's Degree



39.0%  
Bachelor's/Grad/ Prof Degree

## INCOME



\$66,033

Median Household Income



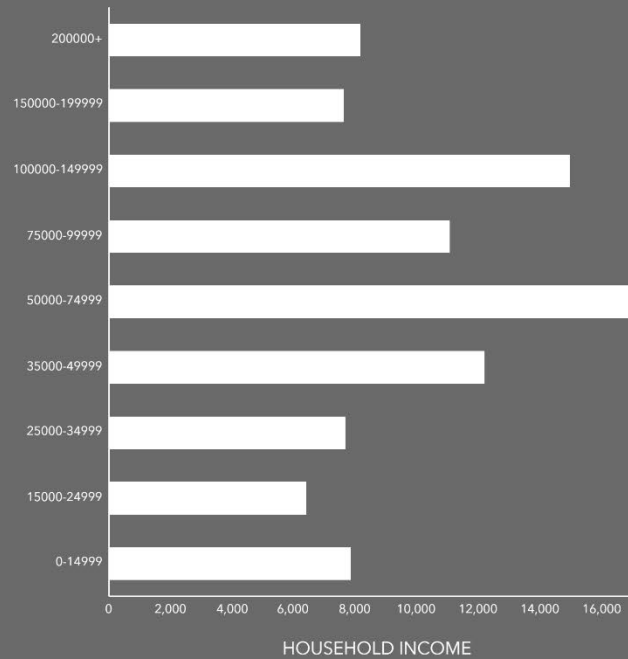
\$37,485

Per Capita Income

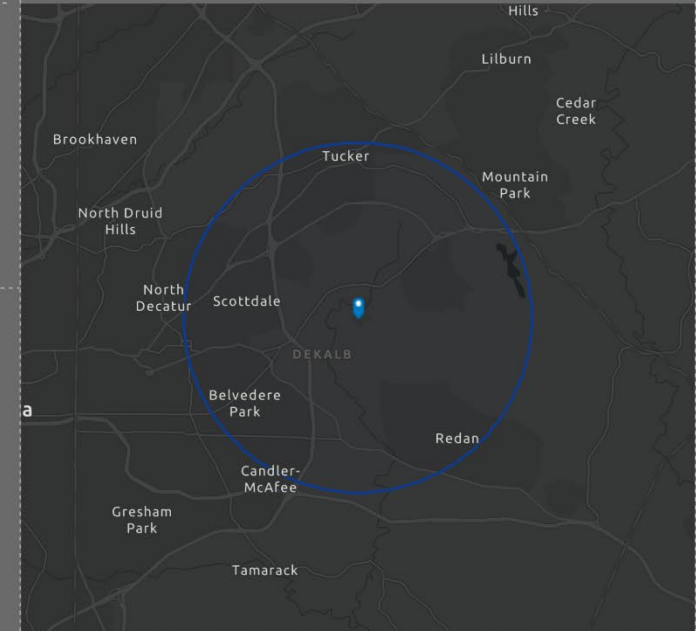


\$123,631

Median Net Worth



HOUSEHOLD INCOME



### EMPLOYMENT



White Collar

64.3%



Blue Collar

22.8%



Services

15.8%

5.4%

Unemployment Rate

Source: This infographic contains data provided by Esri (2024, 2029). © 2024 Esri

Source: This infographic contains data provided by Esri (2024, 2029).

**Jason Holland, CCIM**

Senior Vice President  
+1 770 539 0378

[jason.holland@avisonyoung.com](mailto:jason.holland@avisonyoung.com)

**Nick Steen**

Senior Associate  
+1 704 905 1447

[nick.steen@avisonyoung.com](mailto:nick.steen@avisonyoung.com)

**Soern Osborne**

Associate  
+1 (404) 807-8239

[soern.osborne@avisonyoung.com](mailto:soern.osborne@avisonyoung.com)

**AVISON  
YOUNG**

STONE MTN.



## Stone Mountain Submarket Summary

**Stone Mountain** Stone Mountain is located in the eastern part of DeKalb County, within the Atlanta metropolitan area. Known for its historical significance and natural beauty, the area covers approximately 16.5 square miles.

Situated near major highways including US 78 and I-285, Stone Mountain offers convenient access to Atlanta's downtown and surrounding regions. The area is also serviced by the MARTA transit system, providing easy commuting options for residents and visitors alike. With a population characterized by a diverse age range and a growing number of educated professionals, Stone Mountain is an attractive location for businesses and residents seeking a balance of suburban tranquility and urban convenience.

**Historical and Cultural Hub:** Home to the famous Stone Mountain Park, featuring the largest bas-relief sculpture in the world, historic landmarks, and numerous recreational opportunities.

**Connectivity:** Excellent access to major highways and public transportation, facilitating easy travel to Atlanta and other key areas.

**Growing Community:** A diverse and vibrant community with a mix of young professionals, families, and long-term residents.

**Educational Attainment:** A significant portion of the population holds higher education degrees, making it an appealing location for businesses requiring skilled employees.

**Natural Beauty and Recreation:** Abundant green spaces, parks, and outdoor activities contribute to a high quality of life.

### **Key Statistics:**

**Major Redevelopment Projects:** Several ongoing projects aimed at enhancing infrastructure and community amenities.

**Commute:** Average travel-to-work commute time is approximately 30 minutes.

**Educational Attainment:** A growing percentage of residents hold a bachelor's degree or higher.

**Median Age:** The median age of residents is 38 years old, reflecting a balanced mix of age groups.

# Get more information

---

**Jason Holland, CCIM**

Senior Vice President

+1 404 840 2669

[jason.holland@avisonyoung.com](mailto:jason.holland@avisonyoung.com)

**Nick Steen**

Senior Associate

+1 704 905 1447

[nick.steen@avisonyoung.com](mailto:nick.steen@avisonyoung.com)

**Soern Osborne**

Associate

+1 (404) 807-8239

[soern.osborne@avisonyoung.com](mailto:soern.osborne@avisonyoung.com)

Visit us online

[avisonyoung.com](http://avisonyoung.com)

© 2021 Avison Young Atlanta, LLC. All rights reserved. E&OE: The information contained herein was obtained from sources which we deem reliable and, while thought to be correct, is not guaranteed by Avison Young.

The logo for Avison Young, featuring the words "AVISON" and "YOUNG" stacked vertically in a bold, white, sans-serif font. The text is centered between two thick, horizontal white bars that extend across the width of the logo.