

+15,900 SF INDUSTRIAL PROPERTY AVAILABLE FOR SUBLEASE

450 Kansas Street, Redlands, California 92373



Space Profile

Premises: **Unit 105 - 15,900 RSF unit within a larger two-building business park**

Rate: **Negotiable**

Availability: **Immediate**

Term: **Flexible, Longer Term Available**

Key Highlights

- 3 offices, break area, and front entrance
- 1 dock high door and 1 ground level door
- 24' minimum clear height
- 2% skylights
- 400 amps, 277/480 volt, 3 phase power to each unit (Tenant to confirm)
- ESFR sprinkler system
- Security System available
- Close proximity to I-10 Freeway

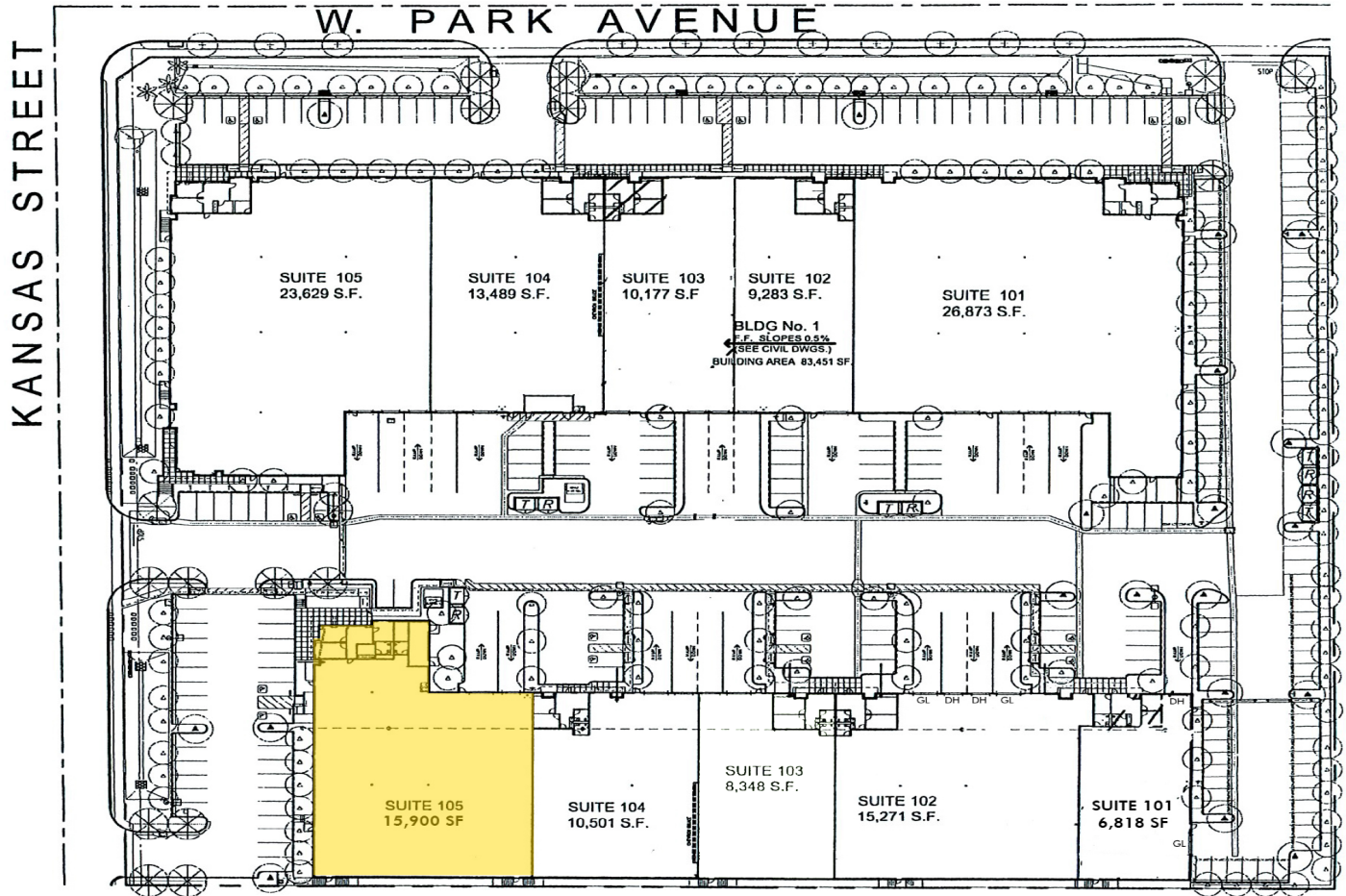
IMPORTANT NOTICE

All information furnished regarding property for sale, rental or financing is from sources deemed reliable. No presentation is made as to the accuracy thereof and it is submitted to errors, omissions, change of price, rental or other conditions, prior sale, lease or financing, or withdrawal without notice.

Designed and Produced by Savills Marketing: +1 949 706 6635 | October 2019

SUBLEASE Redlands Business Park

Suite 105 - 15,900 RSF



For more information, please contact:

Taylor Wood
+1 949 706 6924
TWood@savills.us
License 01868409

Zak Mirkowski
+1 312 595 2926
ZMirkowski@savills.us



Exterior Photos



For more information, please contact:

Taylor Wood
+1 949 706 6924
TWood@savills.us
License 01868409

Zak Mirkowski
+1 312 595 2926
ZMirkowski@savills.us

SAVILLS ORANGE COUNTY
520 Newport Center Drive, 8th Floor, Newport Beach, CA 92660

All information furnished regarding property for sale, rental or financing is from sources deemed reliable. No presentation is made as to the accuracy thereof and it is submitted to errors, omissions, change of price, rental or other conditions, prior sale, lease or financing, or withdrawal without notice.



SUBLEASE Redlands Business Park

Interior Photos



For more information, please contact:

Taylor Wood
+1 949 706 6924
TWood@savills.us
License 01868409

Zak Mirkowski
+1 312 595 2926
ZMirkowski@savills.us

SAVILLS ORANGE COUNTY
520 Newport Center Drive, 8th Floor, Newport Beach, CA 92660

All information furnished regarding property for sale, rental or financing is from sources deemed reliable. No presentation is made as to the accuracy thereof and it is submitted to errors, omissions, change of price, rental or other conditions, prior sale, lease or financing, or withdrawal without notice.

Corporate License 00388260 | savills.us



Interior Photos



For more information, please contact:

Taylor Wood
+1 949 706 6924
TWood@savills.us
License 01868409

Zak Mirkowski
+1 312 595 2926
ZMirkowski@savills.us

SAVILLS ORANGE COUNTY
520 Newport Center Drive, 8th Floor, Newport Beach, CA 92660

All information furnished regarding property for sale, rental or financing is from sources deemed reliable. No presentation is made as to the accuracy thereof and it is submitted to errors, omissions, change of price, rental or other conditions, prior sale, lease or financing, or withdrawal without notice.

