

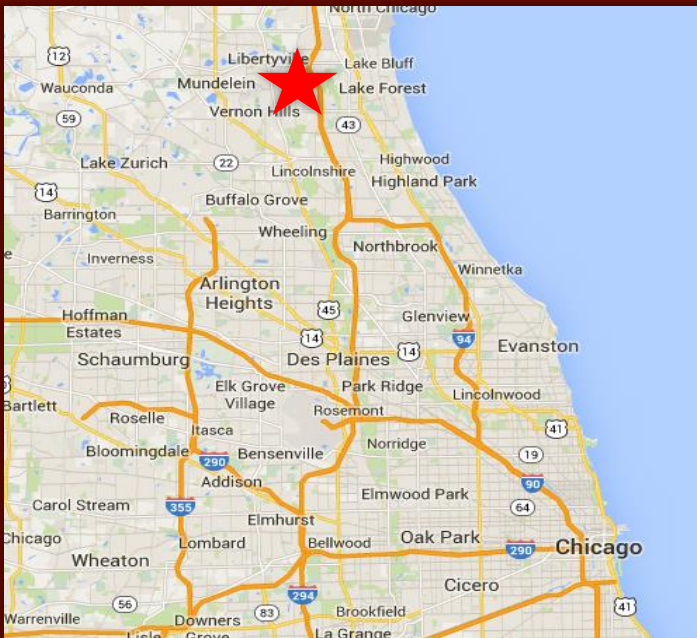
# RETAIL SPACE FOR LEASE

## GREENTREE PLAZA

4,350 SF – 7,500 SF

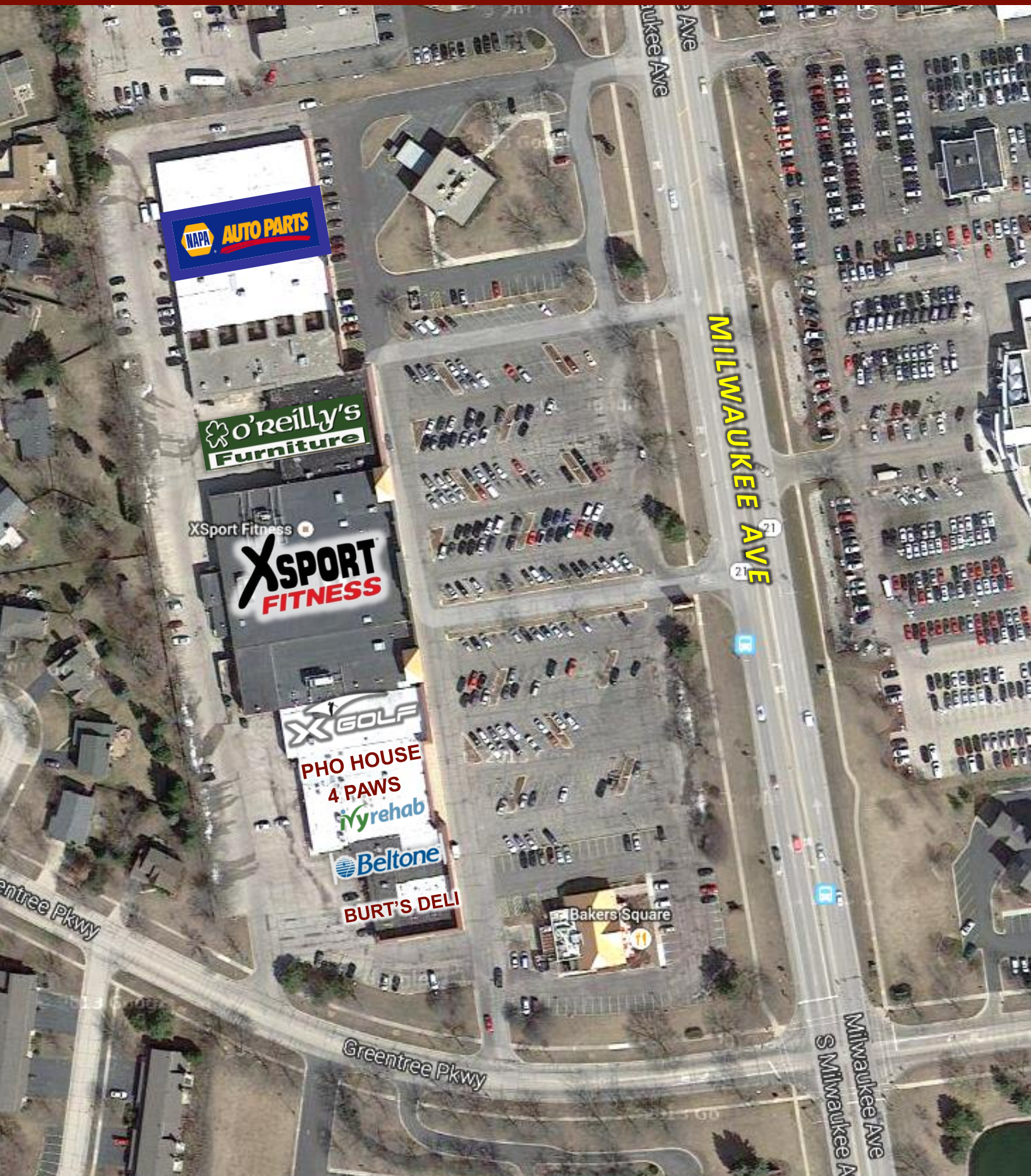
1153 S. Milwaukee Ave.

Libertyville, Illinois



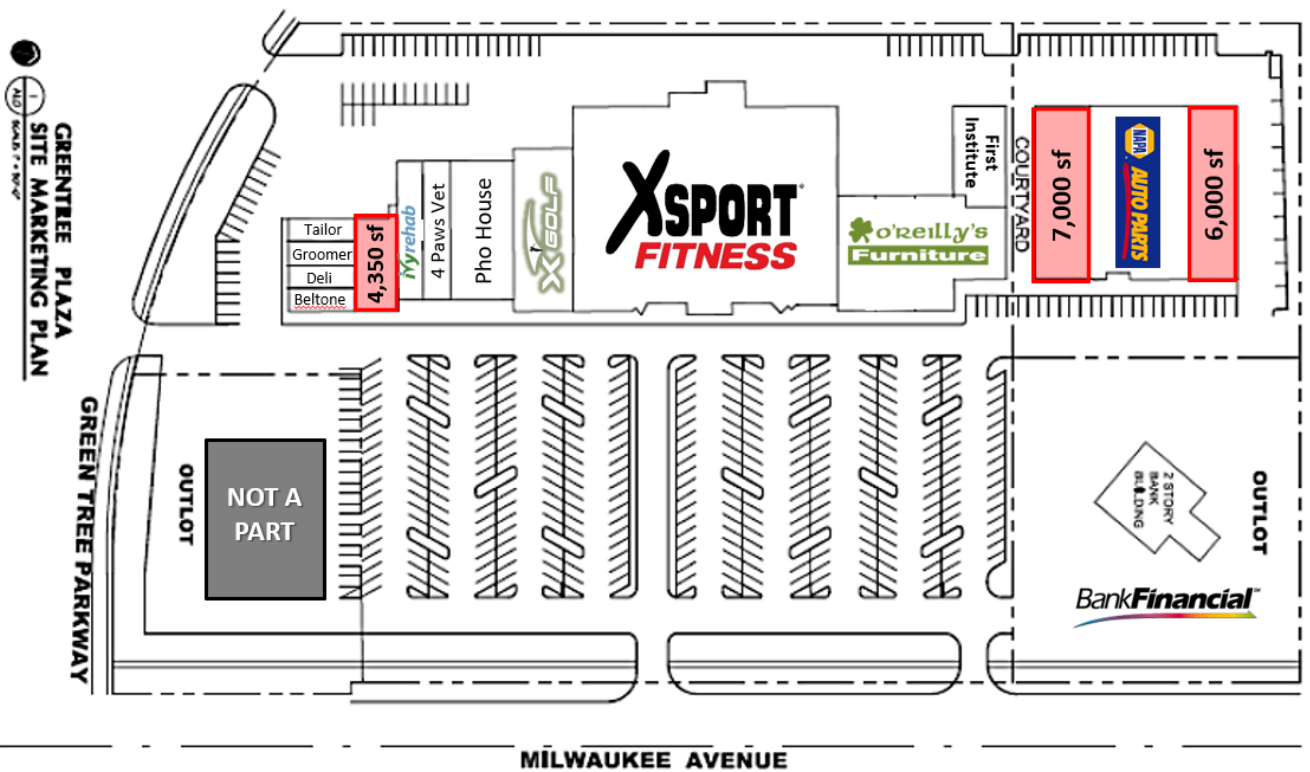
- 108,000 sf center on Milwaukee Ave.
- Great access, visibility and parking with 33,500 VPD along Milwaukee Ave.
- Available spaces from 3,044 sf to 7,500 sf
- Join Xsport Fitness, X-Golf, O'Reilly's Furniture, NAPA Auto Parts, 4 Paws Animal Hospital and Coldwell Banker.
- Located in Libertyville's "motor row" and primary shopping corridor
- Population: 1-mile 8,884 3-mile 58,392
- Strong demos: 1-mile HHI is \$122,724

# GreenTree Plaza, Libertyville, Illinois



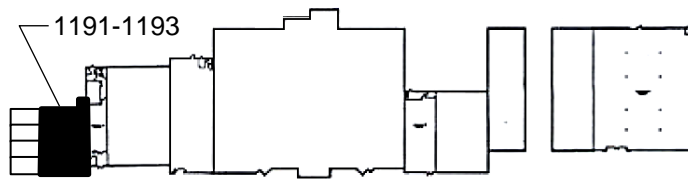
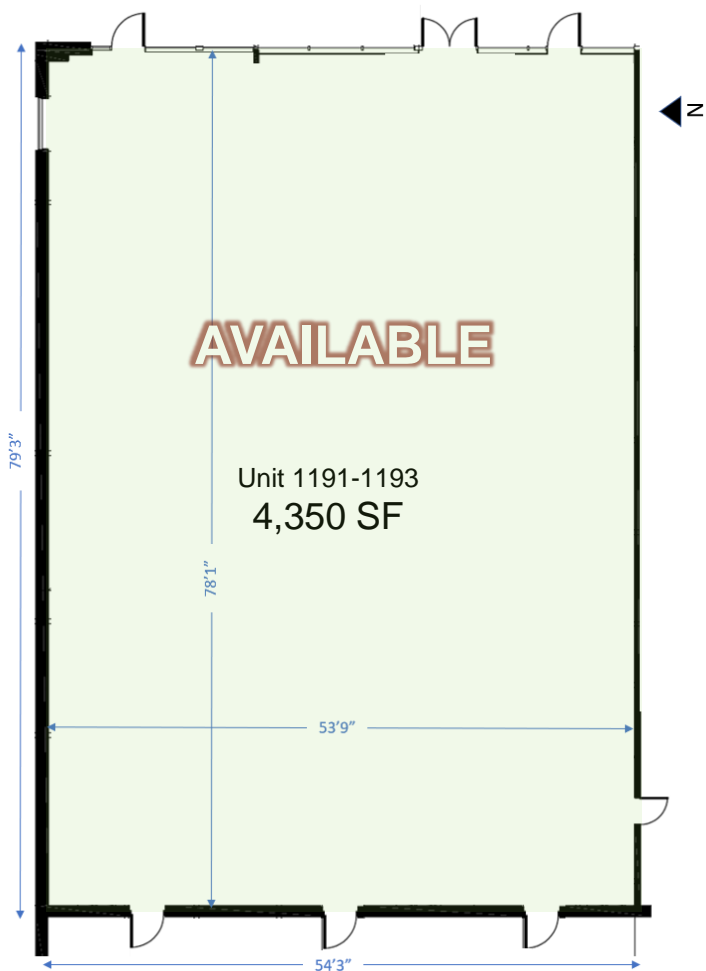


GreenTree Plaza, Libertyville, Illinois





GreenTree Plaza, Libertyville, Illinois



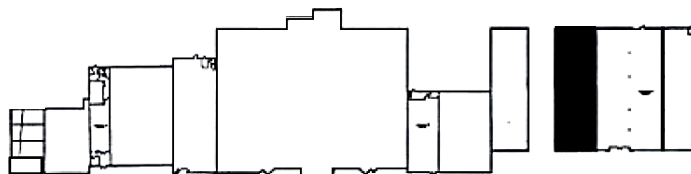
 **Key Plan**  
Not To Scale



GreenTree Plaza, Libertyville, Illinois



- 7,000 sf Office Space
- Mix of private and cube space
- 2-ADA restrooms
- Kitchenette

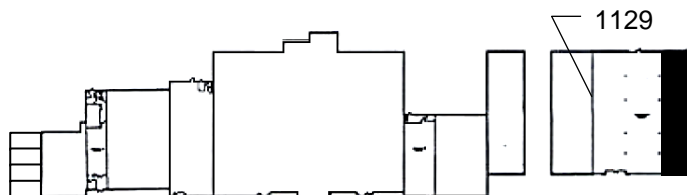
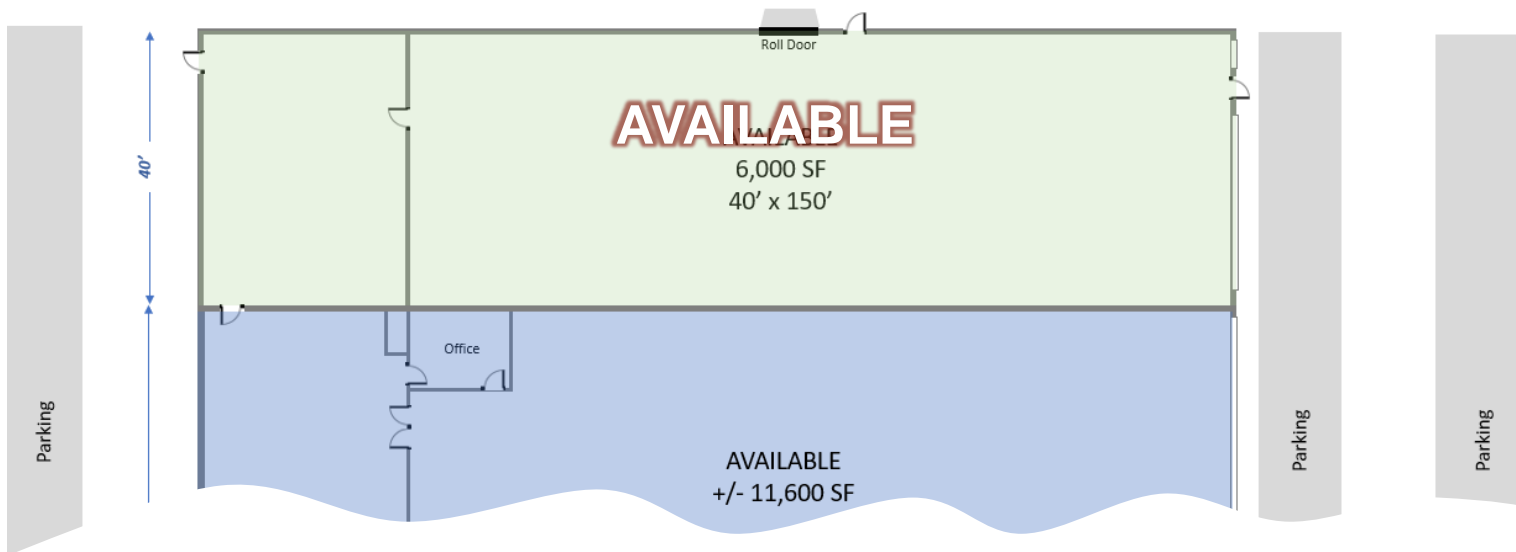


North Milwaukee Avenue

Key Plan  
Not To Scale



GreenTree Plaza, Libertyville, Illinois



North Milwaukee Avenue



Key Plan

Not To Scale