

CAMP CREEK BUSINESS CENTER

2400 Centre Pky, Camp Creek 2400, Atlanta, GA 30345

INDUSTRIAL SUBLEASE

TERM UNTIL
MAY 31, 2027

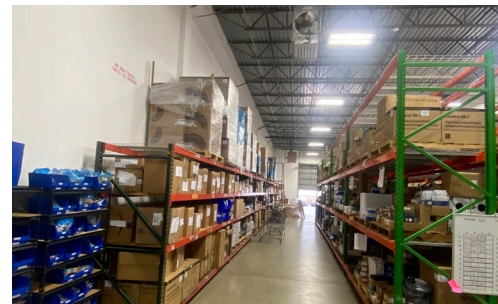
5,900 SF

SUITE #118



TRANSWESTERN

REAL ESTATE
SERVICES



HIGHLIGHTS

- **5,900 SF Available**
- **Office Size:**
1,212
- **Warehouse Size:**
4,688 SF
- **Term Until**
May 31, 2027
- **Rate:** Inquire
- **2 Dock High Doors**
- **20' Clear Ceiling Height**
- **Rear Load Distribution**
- **Roughly 8 miles from**
major highways such
as I-85, I-285, and I-75.
- **Easy access to**
Hartsfield-Jackson
Atlanta International Airport

LEASING INFORMATION

AUSTIN HIBBARD

Vice President
404.814.1525
austin.hibbard@transwestern.com

CHARLOTTE EVANS

Business Analyst
404.842.6507
charlotte.evans@transwestern.com

The information provided herein was obtained from sources believed reliable; however, Transwestern makes no guarantees, warranties or representations as to the completeness of accuracy thereof. The presentation of this property is submitted subject to errors, omissions, change of price or conditions, prior to sale or lease, or withdrawal without notice. Copyright © 2025 Transwestern.

CAMP CREEK BUSINESS CENTER

2400 Centre Pky, Camp Creek 2400, Atlanta, GA 30345



TRANSWESTERN

REAL ESTATE
SERVICES

INDUSTRIAL SUBLEASE

TERM UNTIL
MAY 31, 2027

5,900 SF

SUITE #118



LEASING INFORMATION

AUSTIN HIBBARD

Vice President
404.814.1525
austin.hibbard@transwestern.com

CHARLOTTE EVANS

Business Analyst
404.842.6507
charlotte.evans@transwestern.com

The information provided herein was obtained from sources believed reliable; however, Transwestern makes no guarantees, warranties or representations as to the completeness of accuracy thereof. The presentation of this property is submitted subject to errors, omissions, change of price or conditions, prior to sale or lease, or withdrawal without notice. Copyright © 2025 Transwestern.

CAMP CREEK BUSINESS CENTER

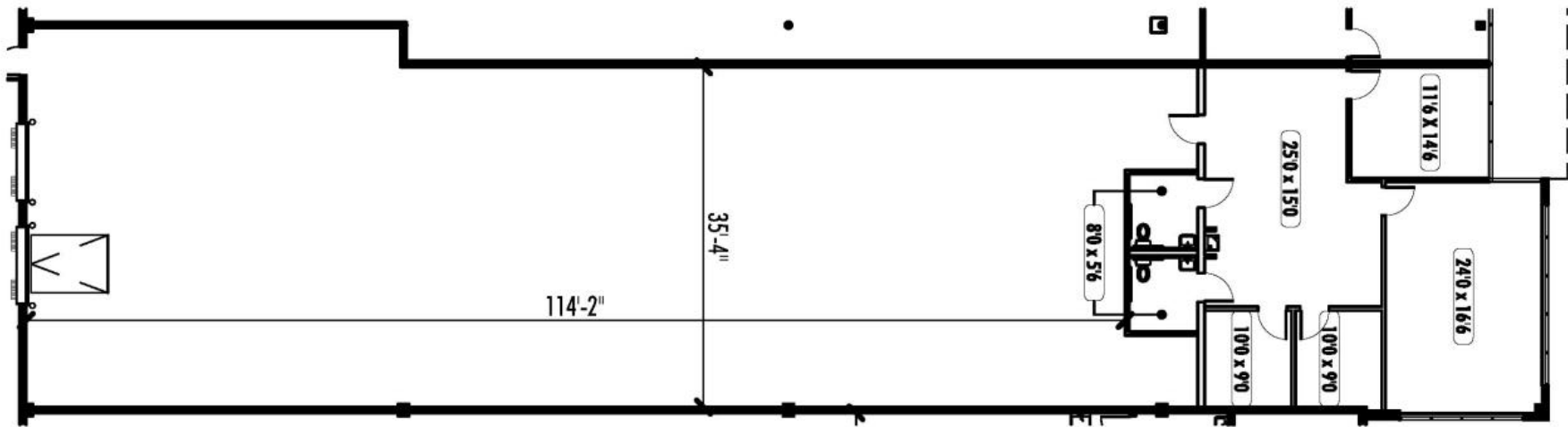
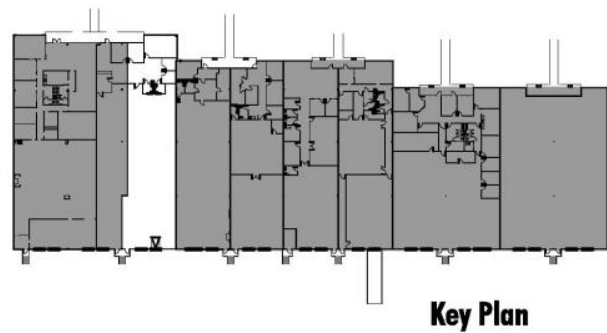
2400 Centre Pky, Camp Creek 2400, Atlanta, GA 30345



TRANSWESTERN

REAL ESTATE
SERVICES

| | | | |
|---------------------|----------------------------|----------|------------|
| INDUSTRIAL SUBLEASE | TERM UNTIL MAY 31, 2027 | 5,900 SF | SUITE #118 |
|---------------------|----------------------------|----------|------------|



LEASING INFORMATION

AUSTIN HIBBARD

Vice President
404.814.1525
austin.hibbard@transwestern.com

CHARLOTTE EVANS

Business Analyst
404.842.6507
charlotte.evans@transwestern.com

The information provided herein was obtained from sources believed reliable; however, Transwestern makes no guarantees, warranties or representations as to the completeness of accuracy thereof. The presentation of this property is submitted subject to errors, omissions, change of price or conditions, prior to sale or lease, or withdrawal without notice. Copyright © 2025 Transwestern.