

Colliers



Broker Incentive
*\$15,000 Bonus**

For Lease

Lew Manglos, CCIM, SIOR
+1 208 472 2841
lew.manglos@colliers.com

David Cadwell
+1 208 850 3733
david.cadwell@colliers.com

755 West Front Street, Suite 300
Boise, Idaho 83702
+1 208 345 9000
colliers.com/idaho

*Contact agent for more information

1450 S. Eagle Flight Way Boise, ID

Highlights:

- Beautiful office building located near Maple Grove & Overland Roads in West Boise
- Great location for office, service or medical users
- Surrounding retailers, restaurants and financial institutions
- Abundant parking

Space Available

Suite	Size	Rate
1458	3,327 SF	\$19.75/SF FSEJ
1456	3,036 SF	\$19.75/SF FSEJ
1450	10,976 SF	\$19.75/SF FSEJ
200	7,994 SF	\$19.75/SF FSEJ

Accelerating success.

For Lease

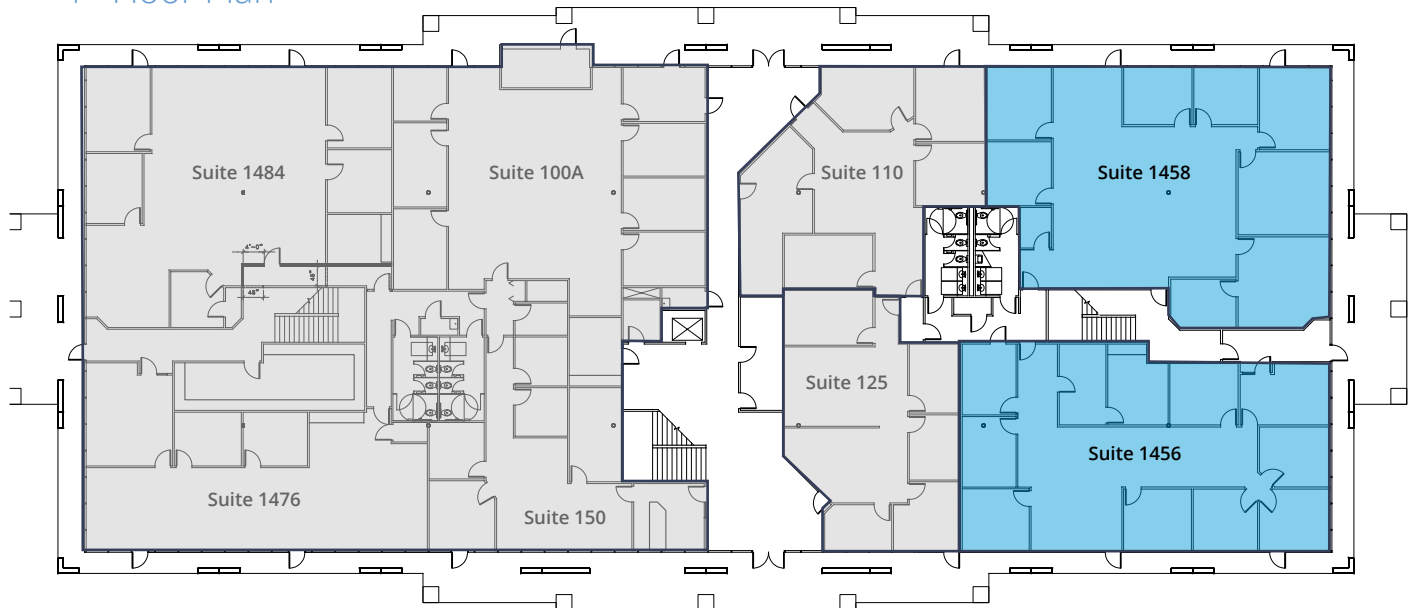
Property Information

Property Type	Office
Building Size	43,954
Parking	5/1000
Access	Contact Agent

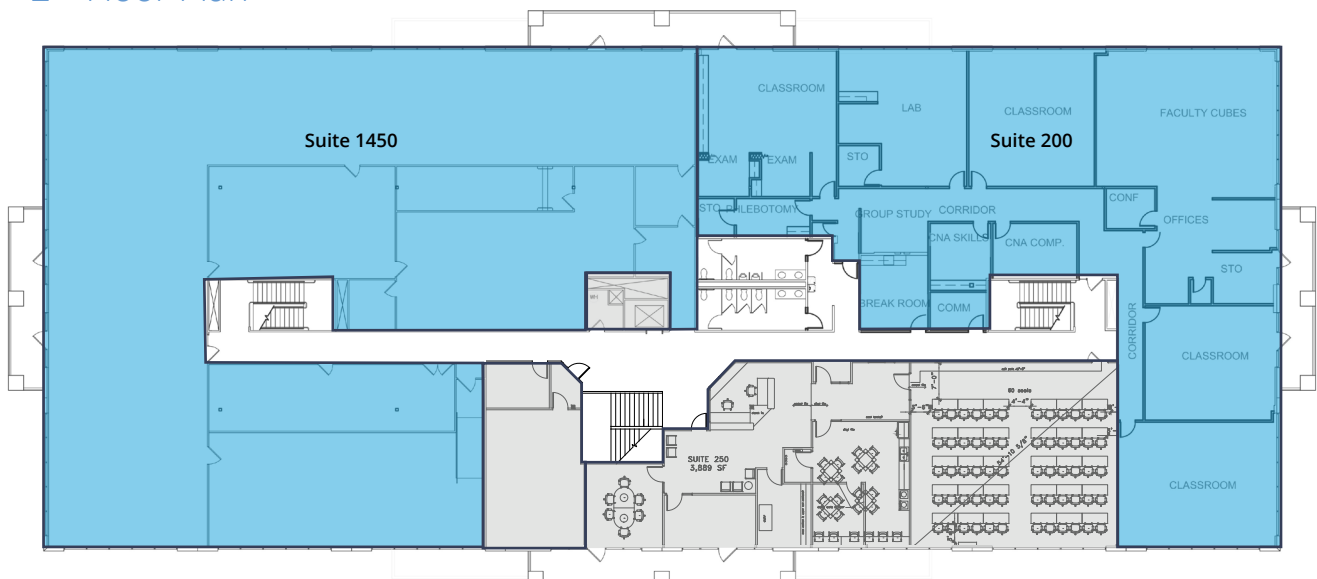


 Available for Occupancy

1st Floor Plan



2nd Floor Plan



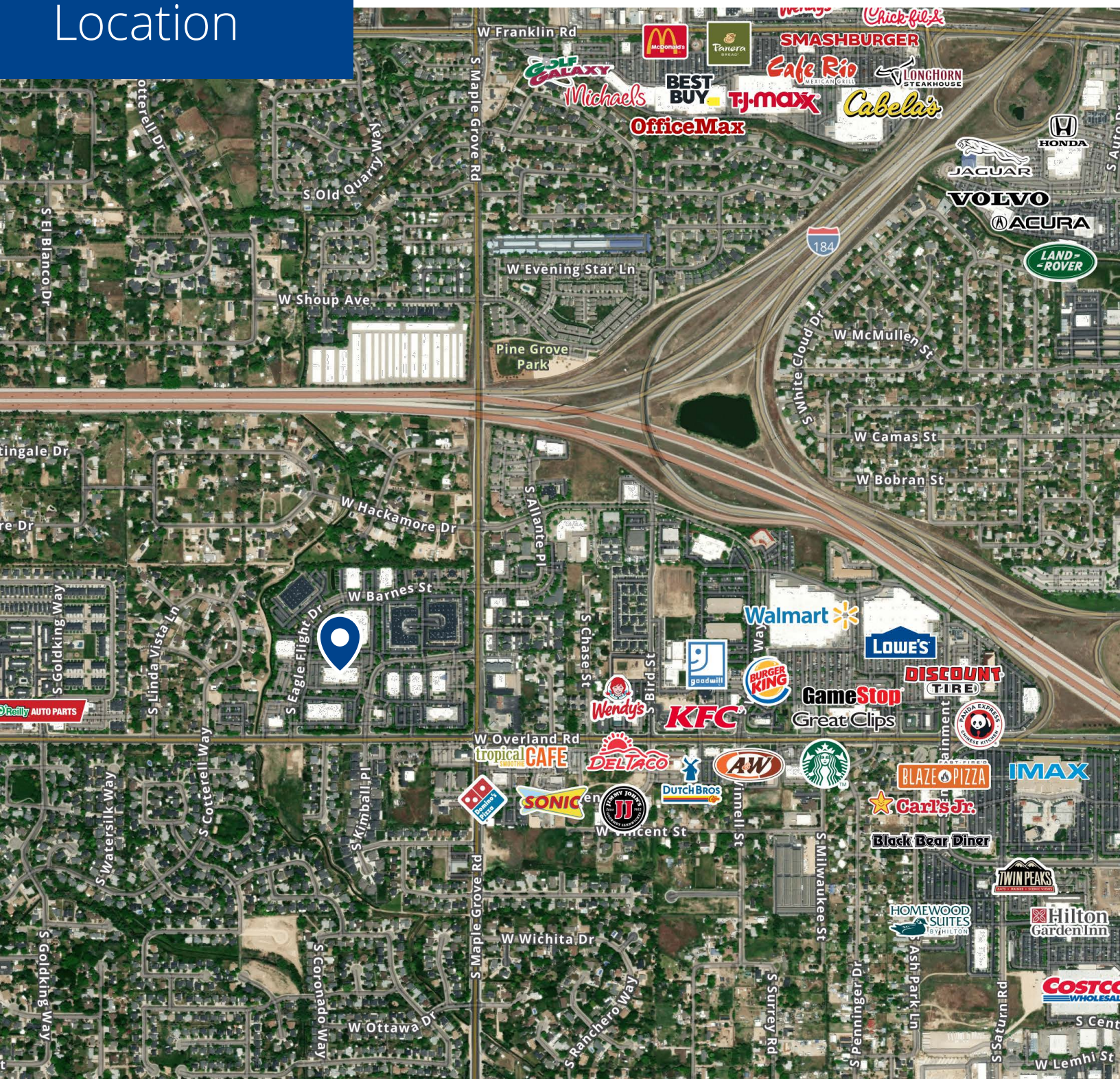
Location



Google Map



Street View



755 West Front Street, Suite 300
Boise, Idaho 83702
+1 208 345 9000
colliers.com/idaho

This document has been prepared by Colliers for advertising and general information only. Colliers makes no guarantees, representations or warranties of any kind, expressed or implied, regarding the information including, but not limited to, warranties of content, accuracy and reliability. Any interested party should undertake their own inquiries as to the accuracy of the information. Colliers excludes unequivocally all inferred or implied terms, conditions and warranties arising out of this document and excludes all liability for loss and damages arising there from. This publication is the copyrighted property of Colliers and/or its licensor(s). © 2025. All rights reserved. This communication is not intended to cause or induce breach of an existing listing agreement. Colliers Treasure Valley, LLC.