

The Colliers logo is located in the top right corner of the image. It consists of the word "Colliers" in a white serif font, centered within a dark blue rounded rectangle. Below the text are three horizontal lines in yellow, orange, and red from top to bottom.

Colliers

The background of the top half of the page is a photograph of the Gardens Commerce Center building. The building is a multi-story, light-colored structure with a prominent white arched entrance on the left. It is surrounded by lush greenery, including palm trees and other tropical plants. A paved road with yellow double lines is visible in the foreground on the right. The sky is bright blue with scattered white clouds.

10415 Riverside Drive | Palm Beach Gardens, FL 33410

Gardens Commerce Center

This immaculately maintained property was built in 2008 with concrete tilt up panels. The building is positioned in Gardens Commerce Center, an established light industrial park with easy access and visibility from I-95. The units have a mezzanine area that can be utilized as a storage and/or office area with windows and a 150 PSF live load.

Scott Weprin

Executive Vice President
+1 561 239 9386
scott.weprin@colliers.com

Michael Falk, CCIM, SIOR

Executive Vice President
+1 561 662 2624
michael.falk@colliers.com

Jake Falk

Associate
+1 561 373 7277
jake.falk@colliers.com

Property Overview

Building Park	Gardens Commerce Center	RBA	20,561
Property Type	Flex	Ceiling Ht	20'0"
Year Built	2008	Drive Ins	6/10'0"w x 14'0"h
Number Of Stories	2	Parking Ratio	2/1,000 SF
Zoning	M1A - Light Industrial	Parking Spaces	48
Property Use Code	4800-Warehouse/ Distribution Terminal	Features	Signage

Key Highlights



Class 'A' flex space



Industrial park setting



Abundant parking



Immediate access to Interstate 95



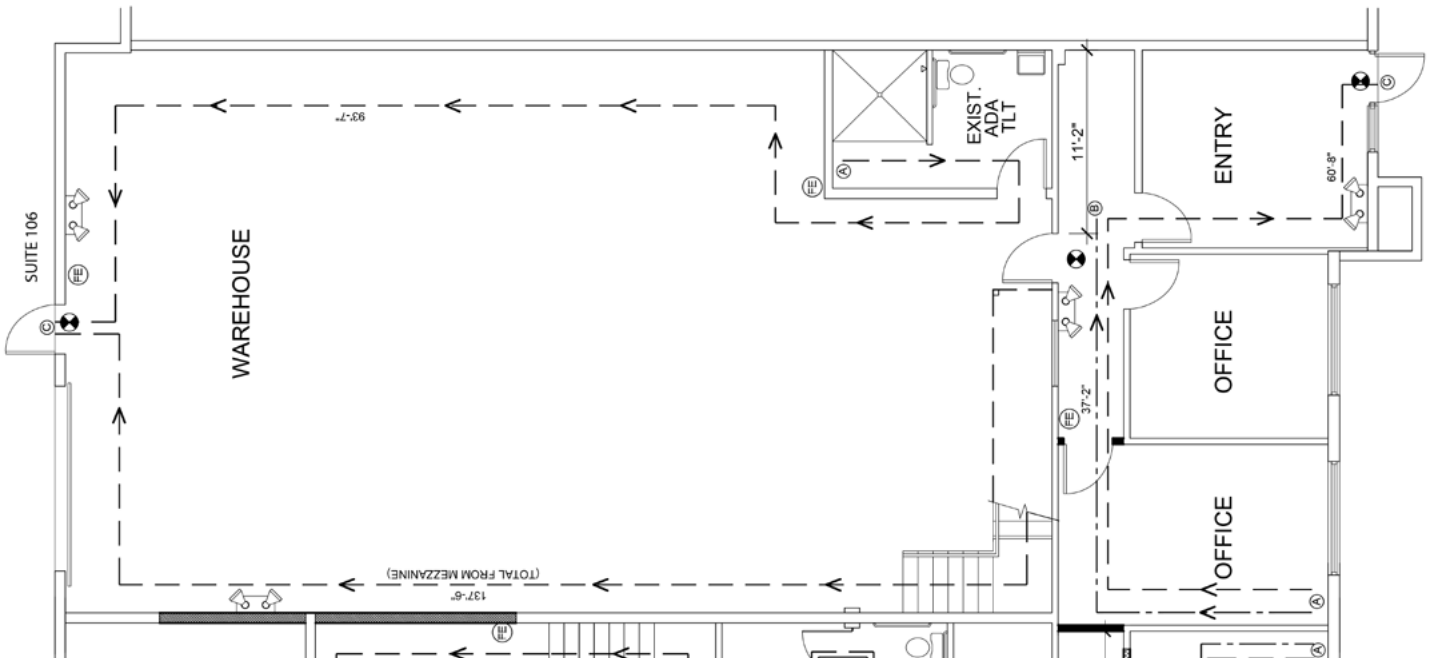
The Location

Palm Beach Gardens, located in Palm Beach County, Florida, is a vibrant city known for its lush landscapes, upscale amenities, and strong community atmosphere. Founded in 1959, the city offers a variety of recreational options, including parks, golf courses, and cultural venues. The Downtown at the Gardens area provides shopping, dining, and entertainment, while nearby beaches offer relaxation and water activities. With top-rated schools, healthcare facilities, and convenient access to major highways, Palm Beach Gardens is a desirable location for both residents and businesses.



Floor Plan

10415 Riverside Drive, Suite 106
3,451 SF available





Downtown at the Gardens

The Gardens Mall

PGA Boulevard

Midtown

Legacy Place



A1A

Burns Road



[View Online Listing](#)

10415 Riverside Drive | Palm Beach Gardens, FL 33410

Scott Weprin

Executive Vice President
+1 561 239 9386
scott.weprin@colliers.com

Michael Falk, CCIM, SIOR

Executive Vice President
+1 561 662 2624
michael.falk@colliers.com

Jake Falk

Associate
+1 561 373 7277
jake.falk@colliers.com

Colliers International Florida, LLC | 901 Northpoint Parkway, Suite 109, West Palm Beach, FL 33407

This document has been prepared by Colliers for advertising and general information only. Colliers makes no guarantees, representations or warranties of any kind, expressed or implied, regarding the information including, but not limited to, warranties of content, accuracy and reliability. Any interested party should undertake their own inquiries as to the accuracy of the information. Colliers excludes unequivocally all inferred or implied terms, conditions and warranties arising out of this document and excludes all liability for loss and damages arising there from. This publication is the copyrighted property of Colliers and/or its licensor(s). Copyright © 2025. All rights reserved. This communication is not intended to cause or induce breach of an existing listing agreement. Colliers International Florida, LLC.



colliers.com