



CONTACT



JESSE SUTHERLAND
208.927.3455
jesse@tokcommercial.com

HIGHLIGHTS



- Class A office building boasts 9 office spaces, a reception waiting area, and a large conference room.
- Near schools, medical facilities, retail, and other businesses.
- Ample parking to the south with dedicated space.
- Perfect for medical, professional, or general office needs.
- Located on the busiest street in Jerome.
- Abundant storage with two existing functioning safes.

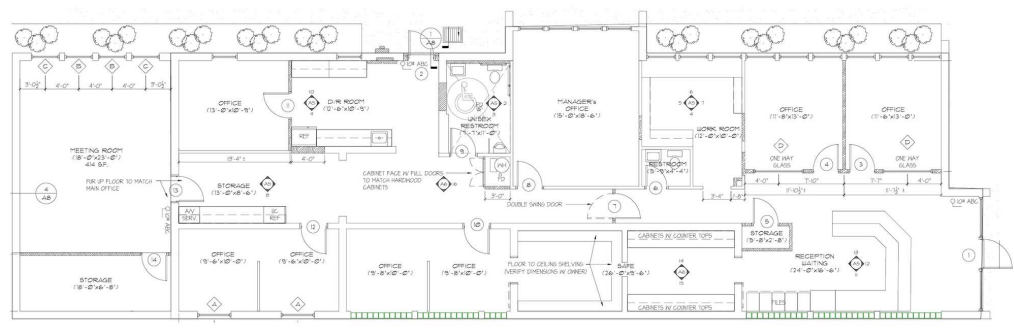
DETAILS



PROPERTY TYPE:	Office
PROPERTY CLASS:	A
BLDG. SIZE:	3,685 SF
SALE PRICE:	\$660,000
LEASE RATE:	\$13.00 SF/yr (NNN)

UPDATED: AUGUST 01, 2024

THIS PROPERTY IS EXCLUSIVELY MARKETED BY TOK MAGIC VALLEY LLC DBA TOK COMMERCIAL
This information was obtained from sources believed reliable but cannot be guaranteed. Any opinions or estimates are used for example only.



UPDATED: AUGUST 01, 2024

THIS PROPERTY IS EXCLUSIVELY MARKETED BY TOK MAGIC VALLEY LLC DBA TOK COMMERCIAL
This information was obtained from sources believed reliable but cannot be guaranteed. Any opinions or estimates are used for example only.



UPDATED: AUGUST 01, 2024

THIS PROPERTY IS EXCLUSIVELY MARKETED BY TOK MAGIC VALLEY LLC DBA TOK COMMERCIAL

This information was obtained from sources believed reliable but cannot be guaranteed. Any opinions or estimates are used for example only.



UPDATED: AUGUST 01, 2024

THIS PROPERTY IS EXCLUSIVELY MARKETED BY TOK MAGIC VALLEY LLC DBA TOK COMMERCIAL

This information was obtained from sources believed reliable but cannot be guaranteed. Any opinions or estimates are used for example only.