

FOR LEASE



FLEX/OFFICE SPACE

16 NORTHBROOK DRIVE, FALMOUTH, ME 04105

PROPERTY HIGHLIGHTS

- 2,611± SF affordable suite
- Efficient office space including kitchenette and flex space with loading dock
- Suburban setting with easy highway access, just 10 minutes to downtown Portland
- Lease Rate: \$2,500/month MG



PROPERTY DETAILS

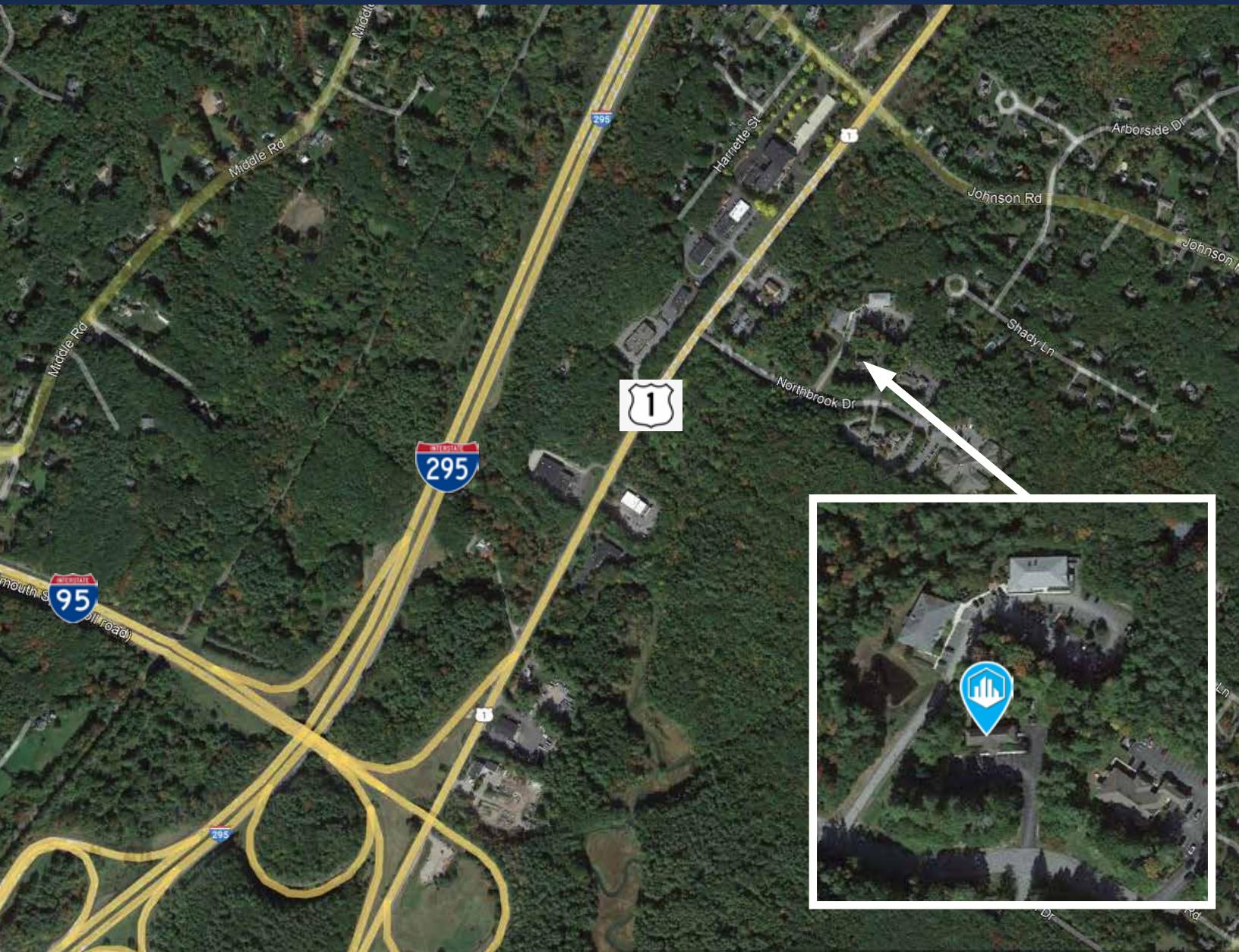
OWNER	ADDISON CAPITAL, LLC
ASSESSOR'S REFERENCE	U59/10/A21
DEED REFERENCE	41175/0027
ZONING	BP - BUSINESS AND PROFESSIONAL
LOT SIZE	1.61± AC
YEAR BUILT	2000
AVAILABLE SPACE	2,611± SF ON THE FIRST FLOOR AND LOWER LEVEL
AVAILABILITY DATE	IMMEDIATE
BUILDING SIZE	7,584± SF
NUMBER OF STORIES	TWO (2)
ELEVATOR	YES
LOADING DOCKS	ONE (1)
HVAC	GAS-FIRED FORCED HOT AIR
SPRINKLER	WET SYSTEM
UTILITIES	MUNICIPAL WATER & SEWER
PARKING	ON-SITE PAVED PARKING
LEASE RATE	\$2,500/MONTH MG

FOR LEASE | 2,611± SF FLEX/OFFICE SPACE
16 NORTHBROOK DRIVE, FALMOUTH, ME 04105



FOR LEASE | 2,611± SF FLEX/OFFICE SPACE

16 NORTHBROOK DRIVE, FALMOUTH, ME 04105



CONTACT US



GREG BOULOS
Broker, Managing Partner

+1 207.553.1715 D
+1 207.831.3000 C
gboulos@boulos.com



SAMANTHA MARINKO
Broker

+1 207.553.1723 D
+1 908.433.5049 C
smarinko@boulos.com

©2025 The Boulos Company, Inc. All rights reserved. This information has been obtained from sources believed reliable, but has not been verified for accuracy or completeness. You should conduct a careful, independent investigation of the property and verify all information. Any reliance on this information is solely at your own risk. The Boulos Company and The Boulos Company logo are service marks of The Boulos Company, Inc. All other marks displayed on this document are the property of their respective owners. Photos herein are the property of their respective owners. Use of these images without the express written consent of the owner is prohibited.