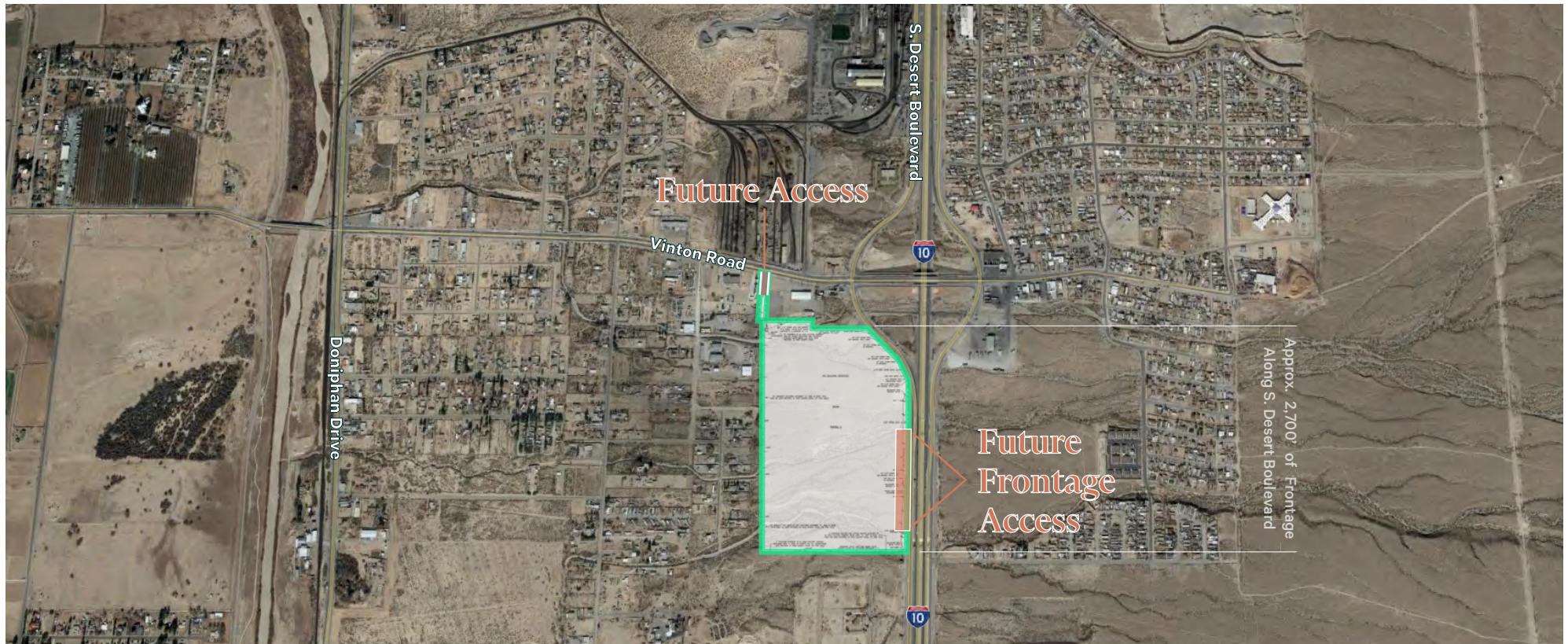


Approx. 95 Acres of Commercial Land

Interstate 10 Frontage in Northwest El Paso

SWQ of S. Desert Boulevard & Vinton Road
Anthony, Texas 79821
www.cbre.com/elpaso



Commercial Land

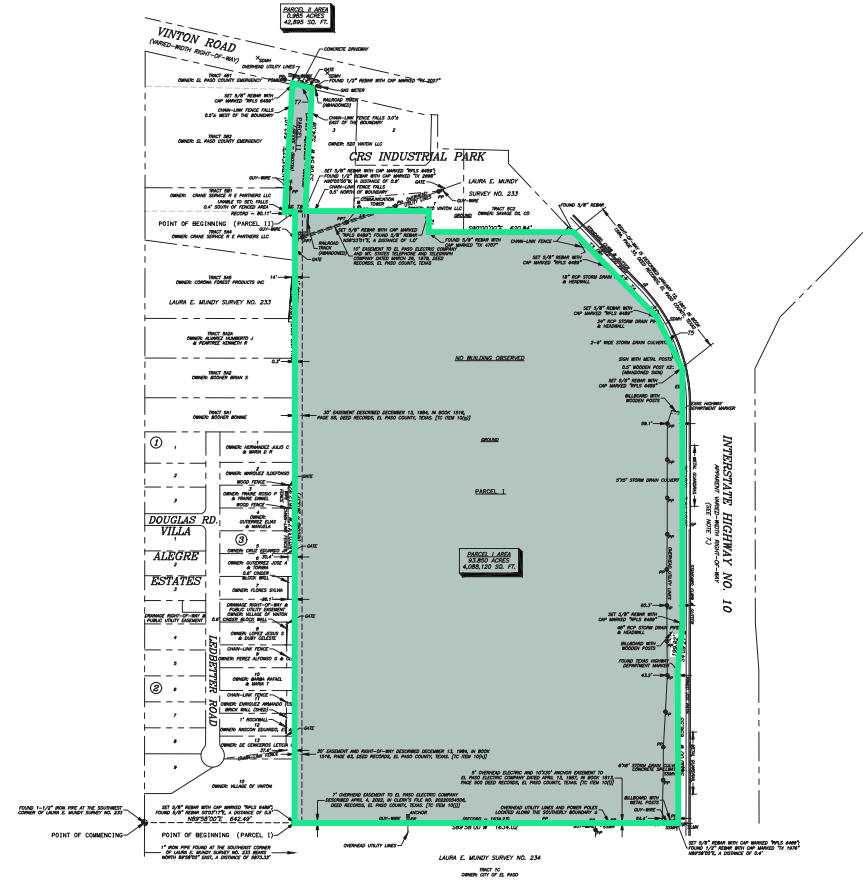
SWQ of S. Desert Boulevard & Vinton Road | Anthony, Texas 79821

For Sale

Property Overview

94.835 acre commercial parcel located along Interstate 10 in west El Paso at the Vinton Road Interchange. Site can be accessed from Vinton Road or S. Desert Boulevard (Interstate 10 Gateway). This property is 3 miles from the New Mexico state line, and 17 miles from both the Santa Teresa Port of Entry and downtown El Paso.

- + Zoning: M-1
(Commercial Use)
- + Access: Ability for access road off of Vinton Road and S. Desert Boulevard
- + Utilities: Power & water are available from municipal providers
 - Water - 12" water line existing on Vinton Road
 - Sewer - 8" sewer line on western portion of the property
 - Electrical - 3 phase electric (summer of 2024)
- + The Village of Vinton has a lower tax rate than the City of El Paso



Contact Us

Christian Perez Giese

Senior Vice President - Director

+1 915 313 8801

christian.perezgiese@cbre.com

© 2023 CBRE, Inc. All rights reserved. This information has been obtained from sources believed reliable, but has not been verified for accuracy or completeness. You should conduct a careful, independent investigation of the property and verify all information. Any reliance on this information is solely at your own risk. CBRE and the CBRE logo are service marks of CBRE, Inc. All other marks displayed on this document are the property of their respective owners, and the use of such logos does not imply any affiliation with or endorsement of CBRE. Photos herein are the property of their respective owners. Use of these images without the express written consent of the owner is prohibited.

www.cbre.com/elpaso



