



8,500 SF OFFICE SPACE FOR SALE

15 GAMECOCK AVENUE

CHARLESTON, SC

CBRE



PROPERTY OVERVIEW

15 GAMECOCK AVENUE

PRIME INVESTMENT OPPORTUNITY IN A GROWING MARKET

An exceptionally bright and well-maintained office building located in the heart of West Ashley. This multi-tenant Class B property is now available for sale, offering a prime location within one of Charleston's most accessible and amenity-rich submarkets.

With the Charleston/North Charleston area continuing to experience strong growth, this property presents a compelling investment opportunity. The surrounding community features a diverse and expanding population with solid median household income, supporting long-term value and demand.

\$1.95M
Sale Price

8,500 SF
Total Area

PROPERTY HIGHLIGHTS

15 GAMECOCK AVENUE

BUILDING TYPE

Class B Office Condo

BUILDING SIZE

± 8,500 Square Feet

TENANCY

Multi

YEAR BUILT

1975

PARKING RATIO

3.84/1,000 SF - Surface Lot

TMS #

3.52-08-00-022



FLOOR PLAN

15 GAMECOCK AVENUE



SECOND FLOOR



FIRST FLOOR

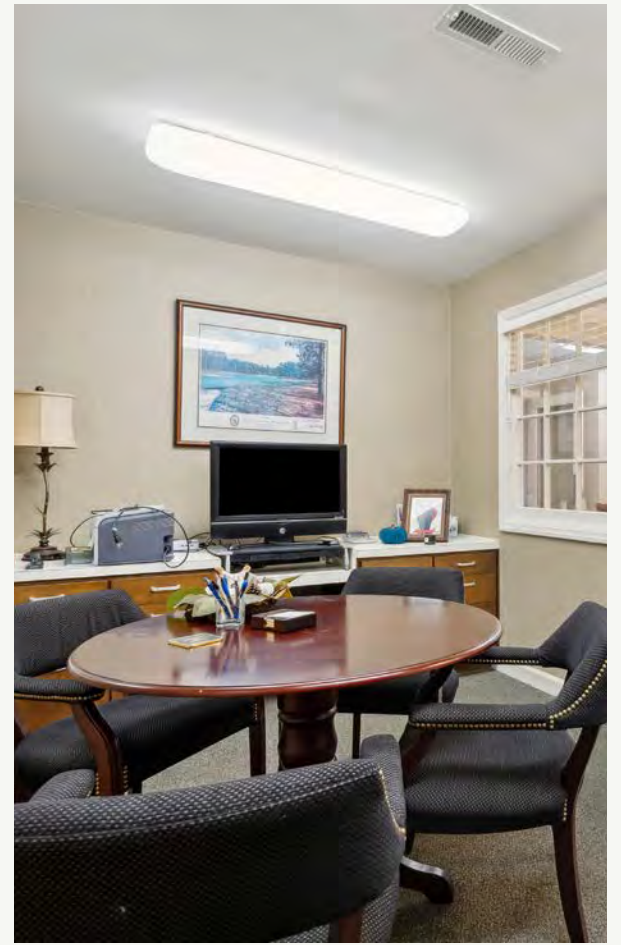
● UNIT A ● UNIT B

*UNIT A & B CAN BE COMBINED INTO ONE LARGE SUITE

AREA MAP

15 GAMECOCK AVENUE









8,500 SF OFFICE SPACE FOR SALE

15 GAMECOCK AVENUE

CHARLESTON, SC



CHIP SHEALY
First Vice President

+1 843 367 6053
chip.shealy@cbre.com

CBRE

© 2025 CBRE, Inc. All rights reserved. This information has been obtained from sources believed reliable but has not been verified for accuracy or completeness. CBRE, Inc. makes no guarantee, representation or warranty and accepts no responsibility or liability as to the accuracy, completeness, or reliability of the information contained herein. You should conduct a careful, independent investigation of the property and verify all information. Any reliance on this information is solely at your own risk. CBRE and the CBRE logo are service marks of CBRE, Inc. All other marks displayed on this document are the property of their respective owners, and the use of such marks does not imply any affiliation with or endorsement of CBRE. Photos herein are the property of their respective owners. Use of these images without the express written consent of the owner is prohibited.