

# STIRLING DESIGN CENTER

1249 STIRLING RD, DANIA BEACH, FL 33004

## PROPERTY SUMMARY



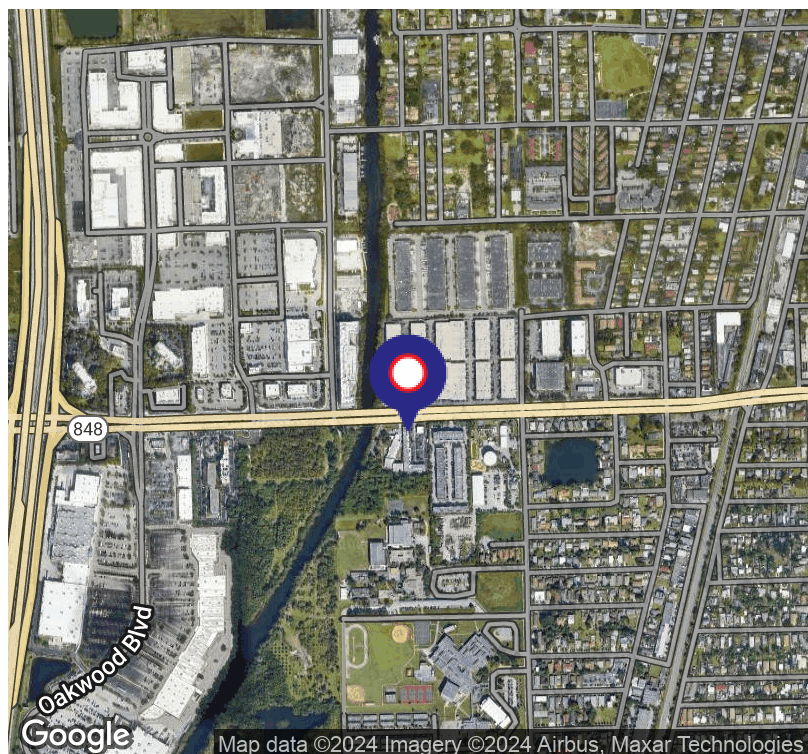
### VIDEO

### PROPERTY DESCRIPTION

The Stirling Design Center is an approximately 22,000 square foot specialty retail and showroom property located half a mile east of I-95 just south of the Fort Lauderdale Hollywood International Airport and 10 minutes to downtown Fort Lauderdale and 35 minutes to either Miami or Boca Raton. Stirling Design Center has frontage on Stirling Road in the heart of the Dania Beach Design District. The property is across from the one million square foot Dania Pointe mixed-use lifestyle center and has great visibility to traffic. Unit sizes range from 748 square feet up to 4,030 square feet with many in the 1,000 to 2,000 square foot range. The units are fully air-conditioned small suites with mostly open floor plans. SDC is 13 units and one story. Most units have workspaces. The property is zoned C4 commercial. There is a dedicated turn lane with Pylon signage with great visibility.

### PROPERTY HIGHLIGHTS

- Small suites with mostly open floor plans and 24 hour access
- 100% air-conditioned spaces
- LED exterior lighting
- Zoned C4
- Just 3.5 miles from the Ft. Lauderdale- Hollywood International Airport



### MATT JONES

Senior Vice President  
Direct: 954.921.6673 | Cell: 954.682.6288  
matt@levyrai.com



FOR LEASE

# STIRLING DESIGN CENTER

1249 STIRLING RD, DANIA BEACH, FL 33004

## ADDITIONAL PHOTOS



### MATT JONES

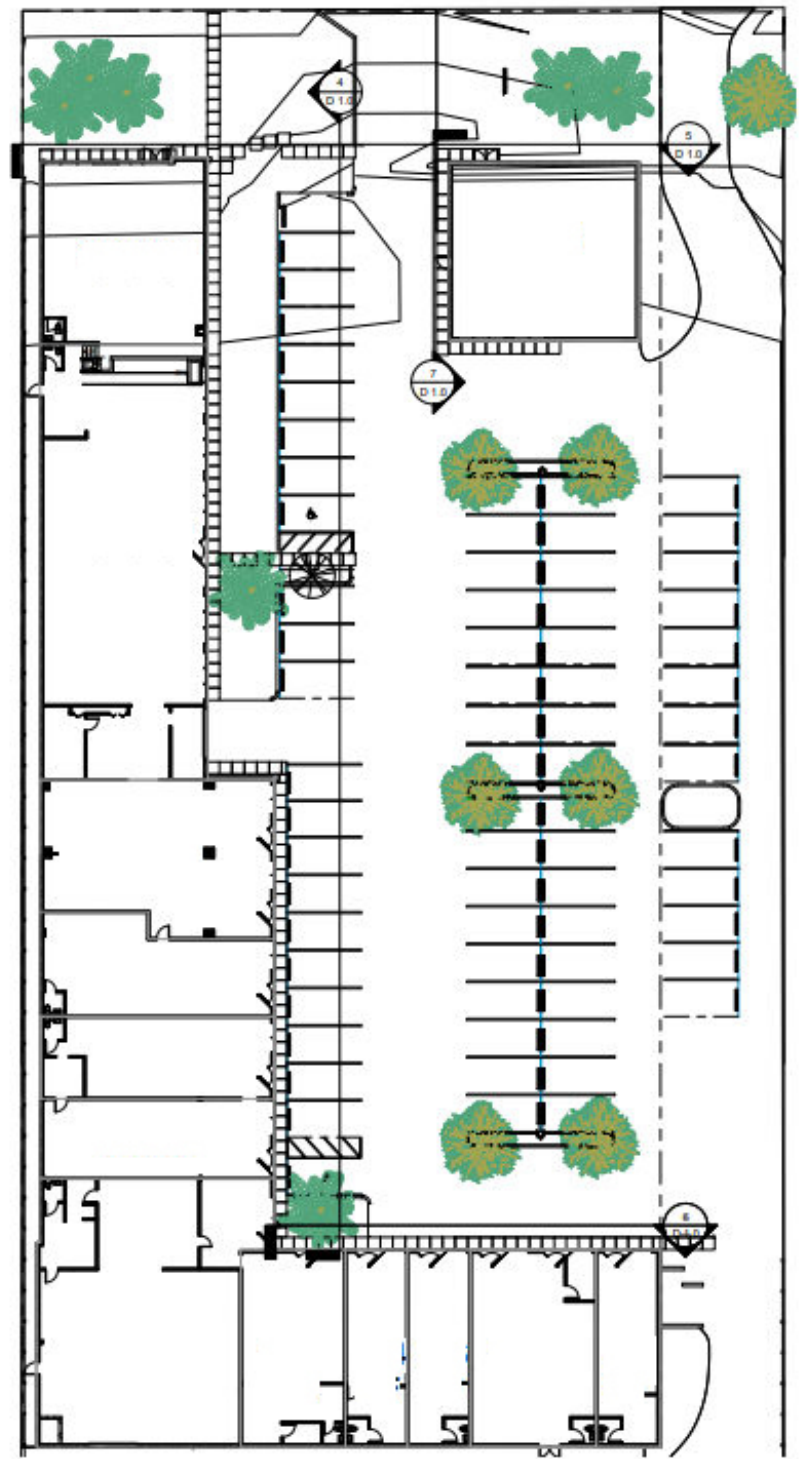
Senior Vice President  
Direct: 954.921.6673 | Cell: 954.682.6288  
matt@levyrai.com



# STIRLING DESIGN CENTER

1249 STIRLING RD, DANIA BEACH, FL 33004

## SITE PLAN



### MATT JONES

Senior Vice President  
Direct: 954.921.6673 | Cell: 954.682.6288  
matt@levyrai.com

