



+/-9.34 AC Residential Development

2134 Parker Rd
London, Kentucky 40741

Property Highlights

- +/-9.36 AC of development land off Highway 192
- Existing +/-1,483 SF residential dwelling currently in place
- Located in London near I-75 just off Exit 38 with close proximity to CHI St Joseph Health and the new 148 AC Buffalo Trace Warehouse Development
- Zoned R-1, Residential for various uses such as multi-family development, mobile home parks, outpatient facilities, etc.
- Sale Price: \$1,000,000 (\$106,837/AC)

Offering Summary

Sale Price:	\$1,000,000
Lot Size:	9.36 Acres

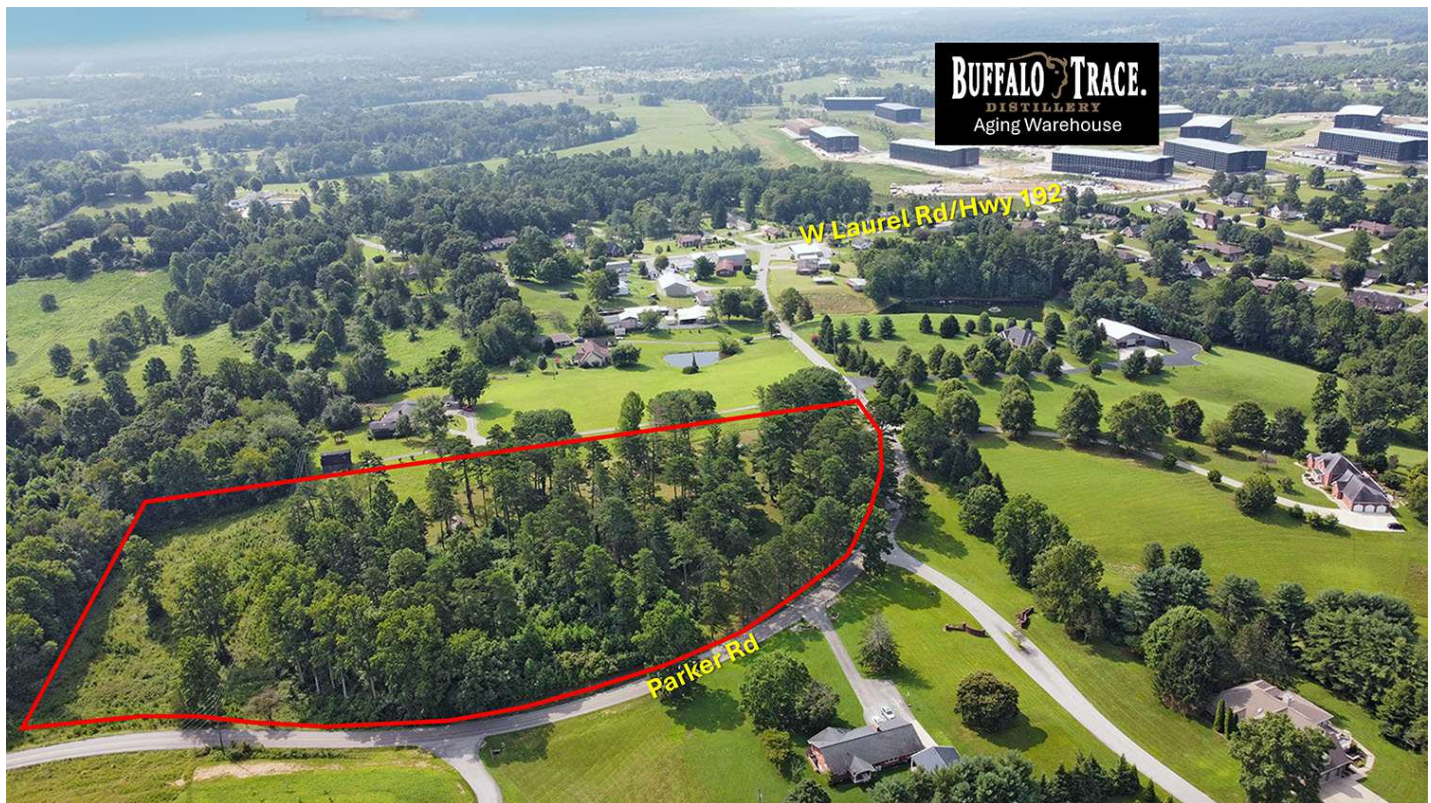
For More Information

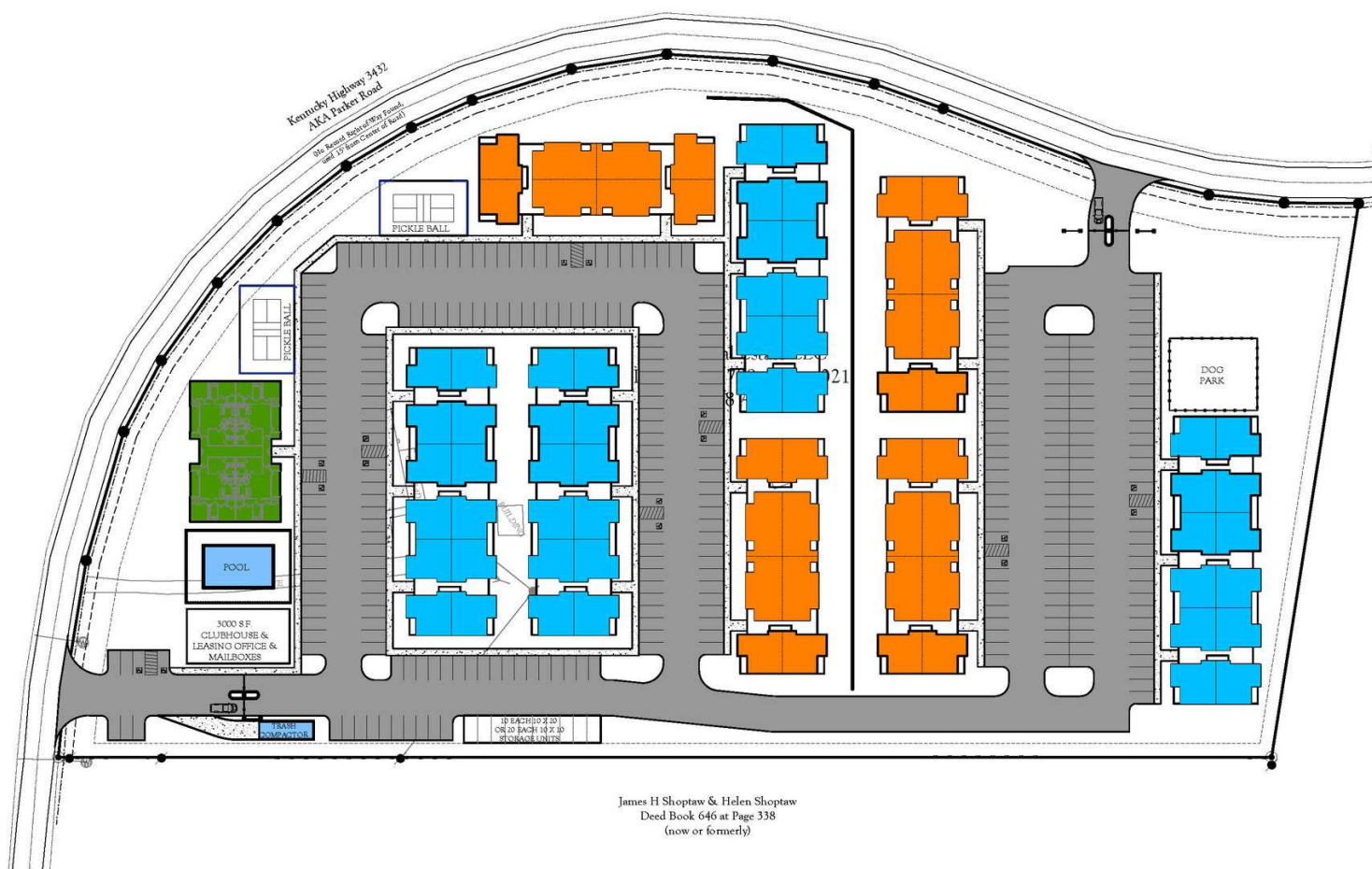
Zach Smith, CCIM

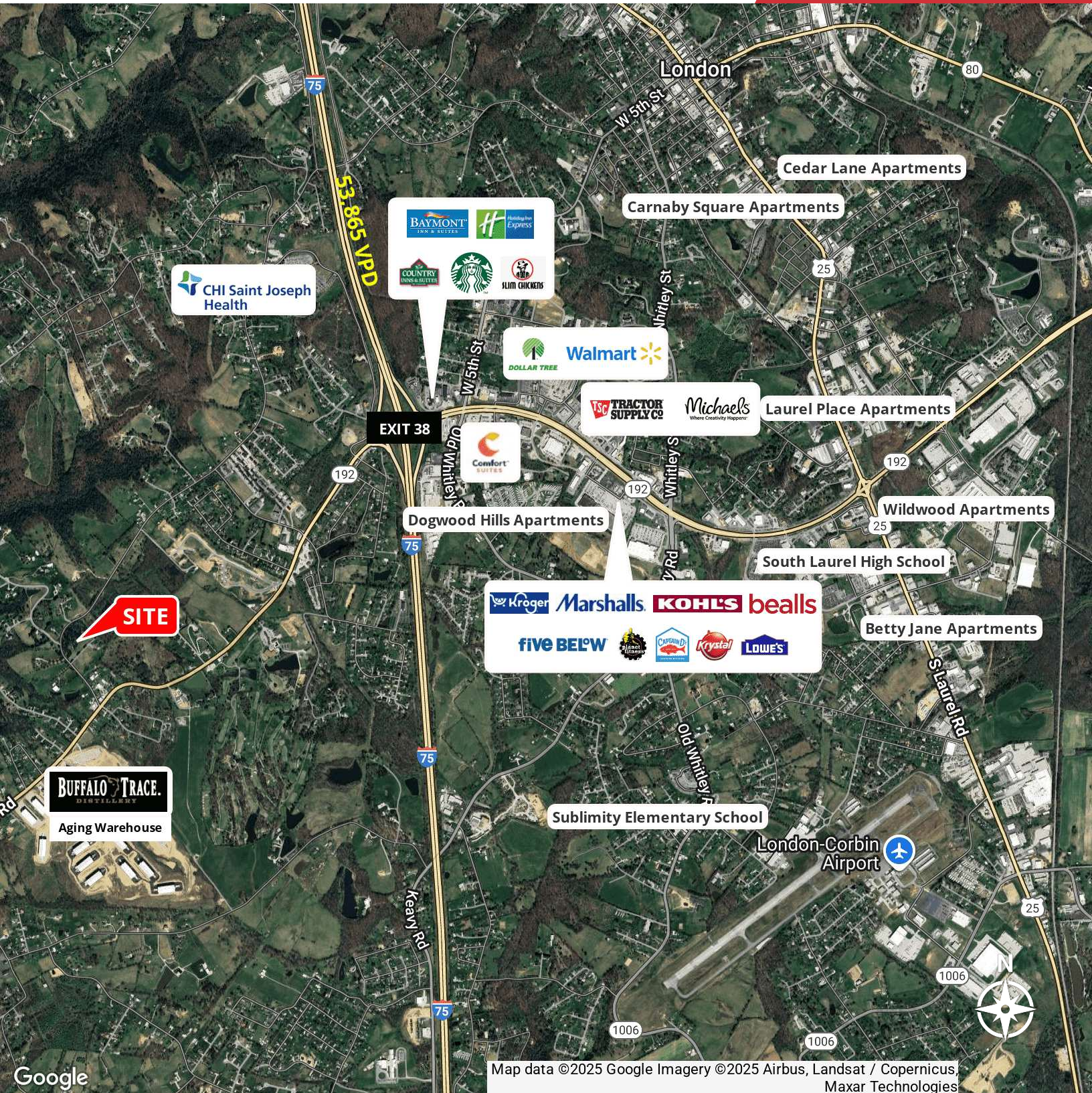
Senior Associate
O: 859 224 2000
zachsmith@naiisaac.com

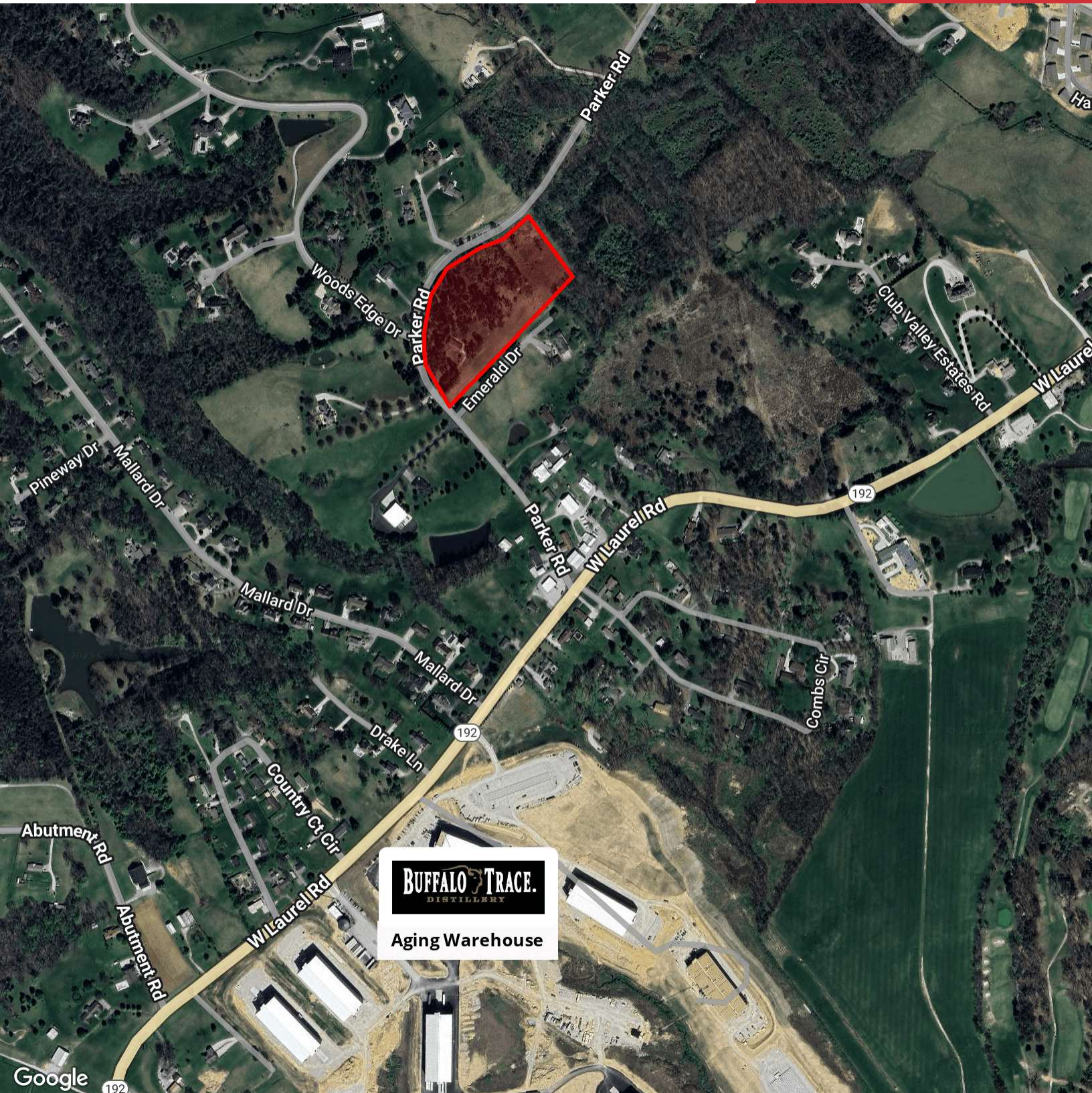
Jordan Smith, MRED

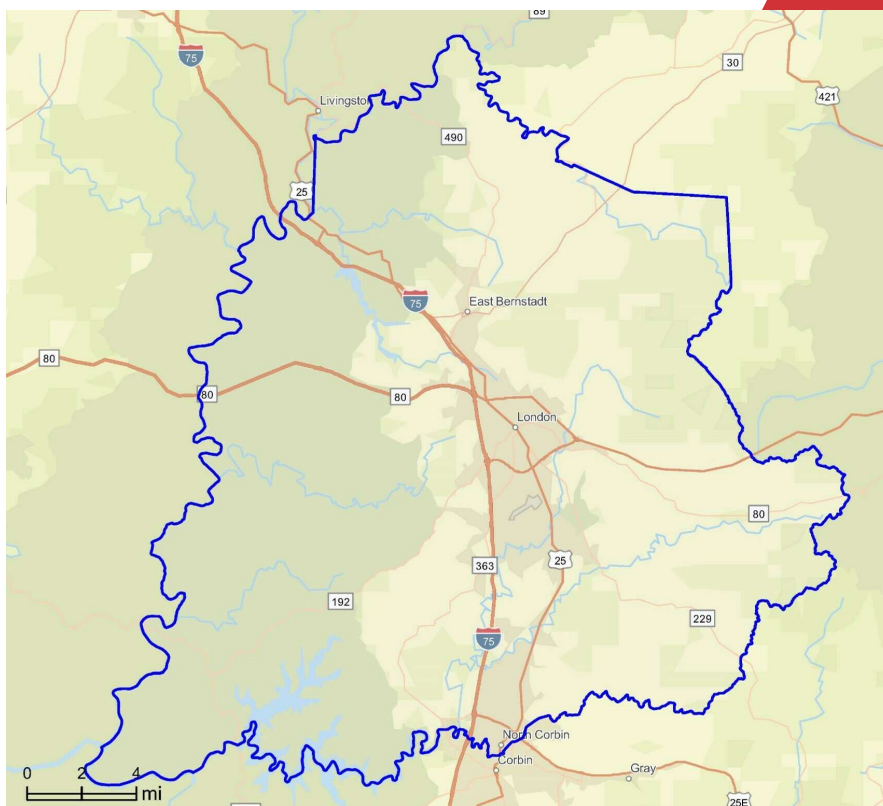
Associate
O: 859 224 2000
jsmith@naiisaac.com











Laurel County Demographics

2024

Population	63,511
Households	24,555
Average Household Income	\$70,771
Per Capita Income	\$27,411