

TOK

COMMERCIAL

OFFICE BUILDING FOR SALE

915 12TH AVENUE

SOUTH NAMPA, IDAHO



UPGRADED INTERIOR

FOR SALE | 1,620 SQUARE FEET

SALE PRICE: \$459,000 | \$283 PER SQUARE FOOT

CONTACT

JP GREEN, CCIM

208.947.0852

jpgreen@tokcommercial.com

HIGHLIGHTS

Great visibility with 26,000 car count per day.

Upgraded interior with ample office space.

Includes a conference area and 4 spacious offices with basement for storage and breakroom.

Easy access with great parking.

DETAILS

Submarket: South Nampa

Bldg Type: Office

Bldg Size: 1,620 SF

Lot Size: 0.16 Acres

Parking: Ample On-Site

Year Built: 1970

Zoning: BC

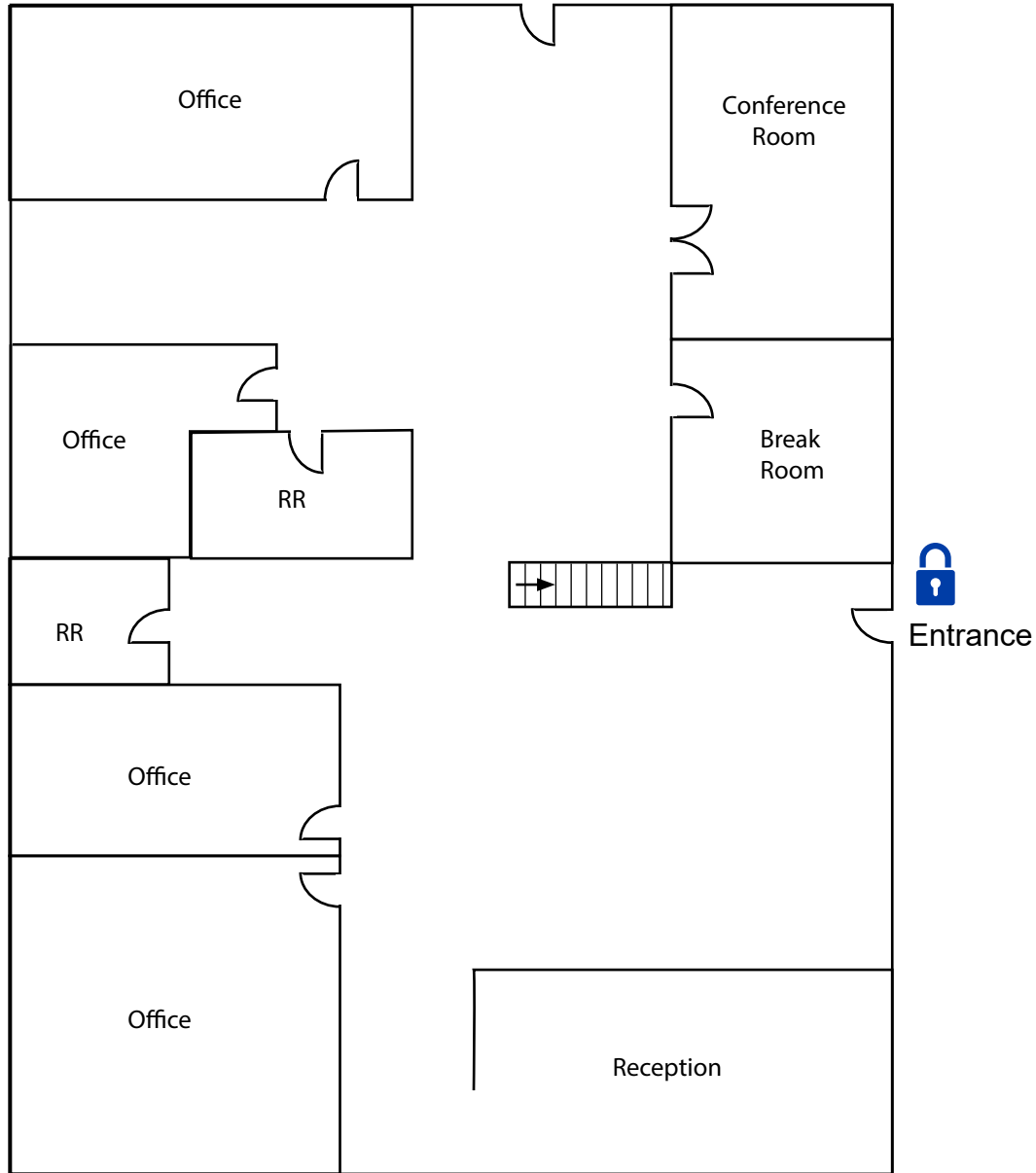


LOCKBOX ON SUITE



UPDATED: 9.18.2024

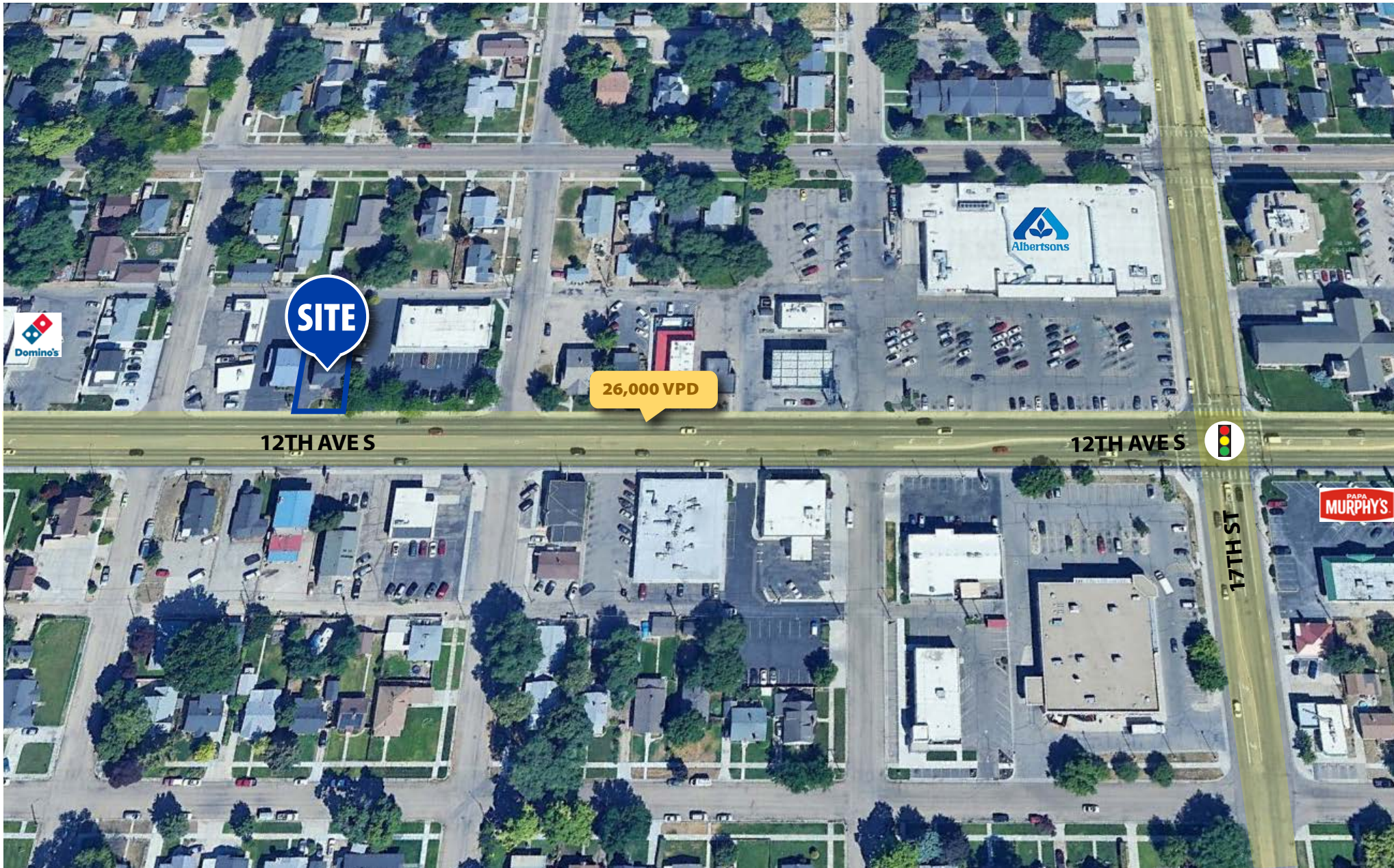
TOK
COMMERCIAL.COM



PHOTOS



915 12TH AVENUE



915 12TH AVENUE



DEMOGRAPHICS

	1 Mi.	3 Mi.	5 Mi.
POPULATION:	17,325	94,284	139,369
AVG HH INCOME:	\$71,816	\$89,540	\$93,303
EST. EMPLOYEES:	11,145	54,035	75,329



12TH AVE



17TH ST



brick29 **TacoTime**
LeBaron's **Dos Caminos**
 Honker Cafe Mexican Restaurant

915 12TH AVENUE