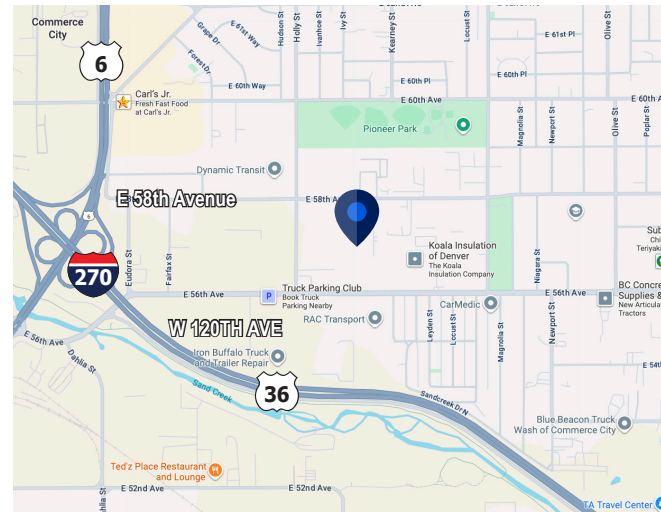


**Park Industrial Center**  
**5850 E 58th Avenue | Units E & F**  
**Commerce City, CO 80022**

<b>Premises</b>	Suites E & F   15,000 SF Total 7,500 SF Each   Available Together or Separately
<b>Asking Rent</b>	\$9.00/SF NNN
<b>Term</b>	September 30, 2028
<b>Loading</b>	3 Ground-Level Drive-ins
<b>Furniture</b>	FF&E Available (Negotiable)
<b>Parking:</b>	1.20:1,000 SF   18 Surface Spaces



**Chris W. Smith | Principal**  
713.503.4428  
csmith@cresa.com

**Bill Baldwin | Managing Principal**  
303.437.9545  
bbaldwin@cresa.com

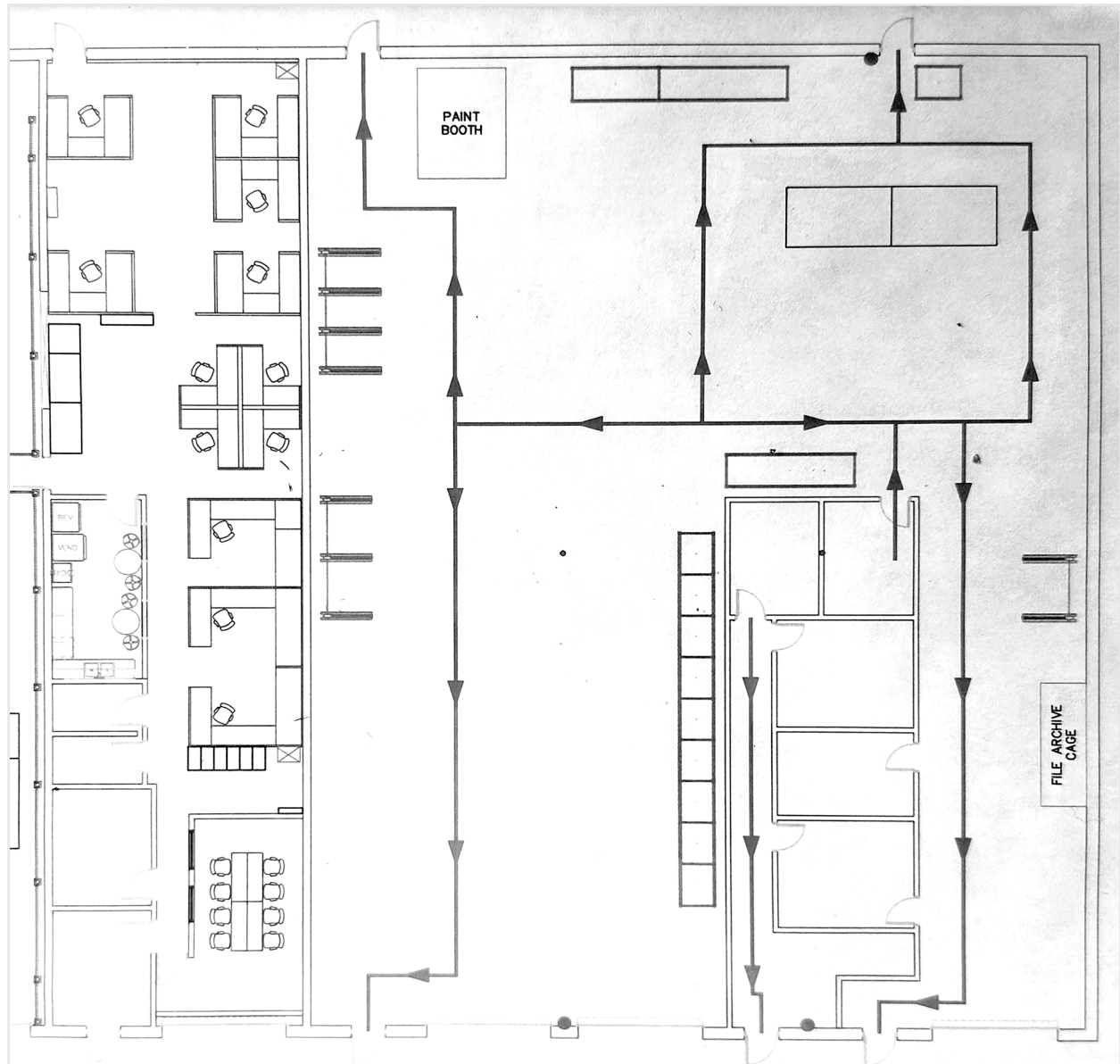
*The following information is provided for informational purposes only. While we endeavor to provide accurate and timely information, we make no representations or warranties of any kind, express or implied, about the completeness, accuracy, reliability, suitability, or availability with respect to the information contained herein. Any reliance you place on such information is therefore strictly at your own risk. We disclaim all liability for any errors or omissions in the content and for any loss or damage of any kind arising from the use of this information.*

Sublease Available

cresa

## Park Industrial Center

5850 E 58th Avenue | Units E & F  
Commerce City, CO 80022



**For more information:**

**Chris W. Smith | Principal**

713.503.4428

[csmith@cresa.com](mailto:csmith@cresa.com)

**Bill Baldwin | Managing Principal**

303.437.9545

[bbaldwin@cresa.com](mailto:bbaldwin@cresa.com)