

Stafford Commons

Office Space Available

201 B Avenue
Lake Oswego, OR, 97034
www.cbre.com/portland

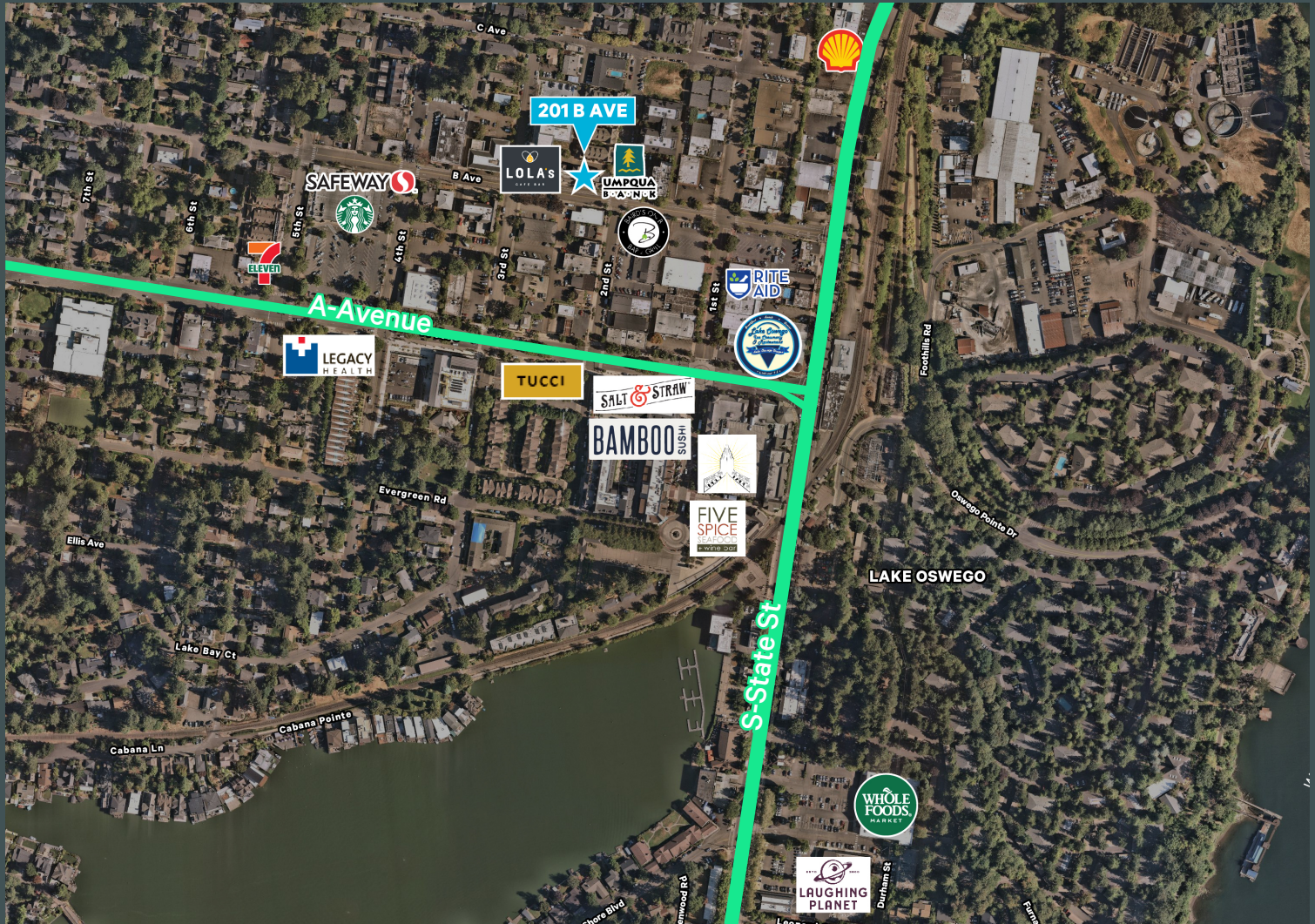
Downtown Lake Oswego Office



Stafford Commons

201 B Avenue | Lake Oswego, OR, 97034

For Lease



Available Suites

RSF

220

989

Rate

+ \$32 rsf/ NNN

+ NNN 2024 estimates - \$1,285.84/mo

Property Highlights

- + Loft Like views
- + Great Natural light
- + Walkable Downtown area
- + Variety of national and local retailers

Contact Us

Jennifer Medak

First Vice President

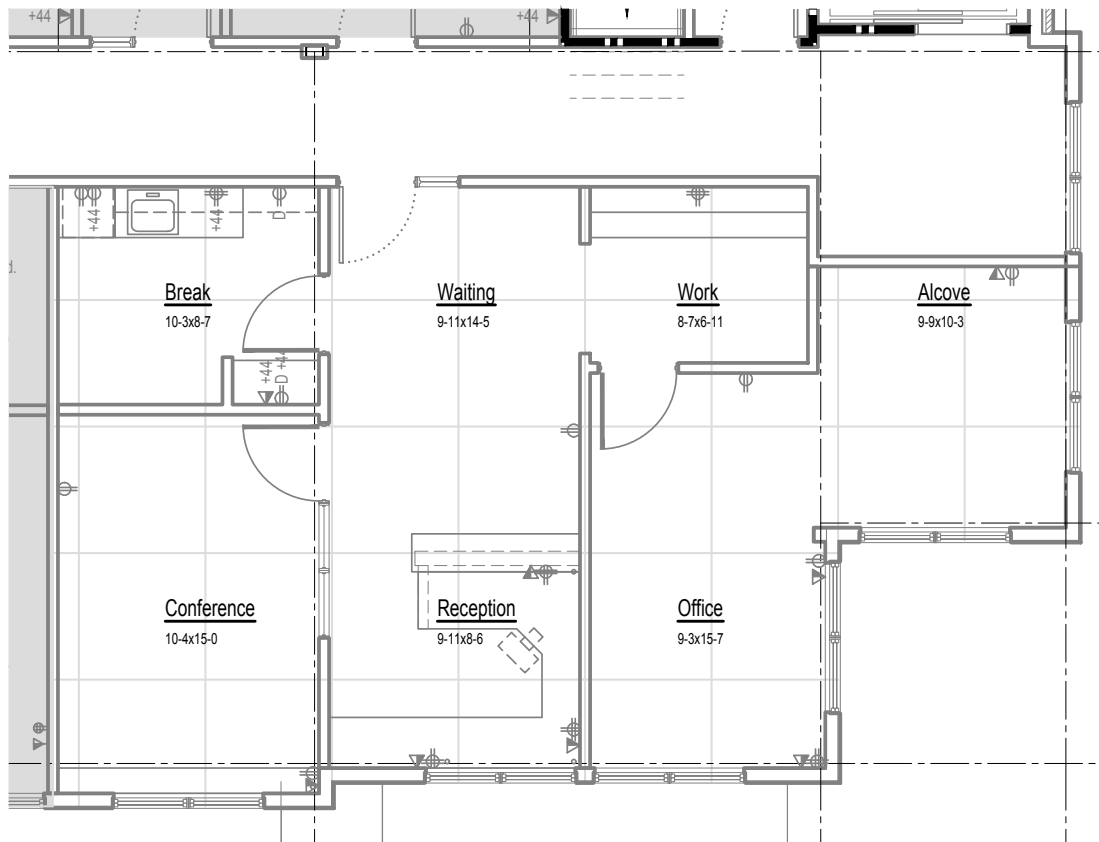
+1 503 221 4853

Jennifer.medak@cbre.com

Licensed in Oregon

Suite 220

989 RSF



Contact Us

Jennifer Medak
First Vice President
+1 503 221 4853
Jennifer.medak@cbre.com
Licensed in Oregon

www.cbre.com/portland

