

**RESTAURANT PROPERTY // FOR SALE**

## **RESTAURANT & BUSINESS FOR SALE: SANDY'S BY THE BEECH**

25853 5 MILE RD

REDFORD TWP, MI 48239



- 3,827 SF free-standing restaurant/bar with real estate
- Updated and fully operational
- Liquor license with outdoor and Sunday permit
- Covered patio/outdoor seating area
- Well-maintained exterior with eye-catching curb appeal
- Prominent street frontage for increased foot traffic
- High-traffic area of 16,000+ VPD
- Surrounded by national tenants including Subway, Family Dollar, and Little Caesars
- Plenty of parking for patrons and staff



**P.A. COMMERCIAL**  
Corporate & Investment Real Estate

26555 Evergreen Road, Suite 1500  
Southfield, MI 48076

248.358.0100

[pacommercial.com](http://pacommercial.com)

We obtained the information above from sources we believe to be reliable. However, we have not verified its accuracy and make no guarantee, warranty or representation about it. It is submitted subject to the possibility of errors, omissions, change of price, rental or other conditions, prior sale, lease or financing, or withdrawal without notice. We include projections, opinions, assumptions or estimates for example only, and they may not represent current, past or future performance of the property. You and your tax and legal advisors should conduct your own investigation of the property and transaction.

25853 5 MILE RD, REDFORD TWP, MI 48239 // FOR SALE

## EXECUTIVE SUMMARY



**Sale Price**

**\$1,950,000**

### OFFERING SUMMARY

**Building Size:** 3,827 SF

**Lot Size:** 0.04 Acres

**Year Built/Updated:** 1954 / 2010

**Zoning:** C2 Commercial

**Market:** Detroit

**Submarket:** Detroit/Deraborn

**Traffic Count:** 16,172

### PROPERTY OVERVIEW

Presenting an exceptional opportunity to acquire a beloved cornerstone of Downtown Redford: Sandy's by the Beech. For the first time in 35 years, this iconic restaurant is available for purchase, including the business, real estate, liquor license, equipment, and inventory. With a proven track record of success, the current owners are ready to pass the torch. Qualified buyers will have access to comprehensive sales, expense records, and tax returns.

Recent capital improvements enhance the value of this investment, featuring a new rooftop AC unit installed in 2024 and a roof replacement along with additional AC updates completed in 2010. Don't miss your chance to step into a thriving restaurant with deep community roots!

### LOCATION OVERVIEW

A vibrant downtown area, full of tradition, community events, unique stores, and family neighborhoods. National tenants surround the property including Subway, Family Dollar, Little Caesars, and KFC.



**P.A. COMMERCIAL**  
Corporate & Investment Real Estate

**Dan Blugerman, CCIM** SENIOR ASSOCIATE  
**D:** 248.987.5418 | **C:** 248.987.5418  
[dan@pacommercial.com](mailto:dan@pacommercial.com)

**Matthew Schiffman** CEO/MANAGING MEN  
**D:** 248.281.9907 | **C:** 248.281.9907  
[matt@pacommercial.com](mailto:matt@pacommercial.com)

We obtained the information above from sources we believe to be reliable. However, we have not verified its accuracy and make no guarantee, warranty or representation about it. It is submitted subject to the possibility of errors, omissions, change of price, rental or other conditions, prior sale, lease or financing, or withdrawal without notice. We include projections, opinions, assumptions or estimates for example only, and they may not represent current, past or future performance of the property. You and your tax and legal advisors should conduct your own investigation of the property and transaction.

25853 5 MILE RD, REDFORD TWP, MI 48239 // FOR SALE

ADDITIONAL PHOTOS



**P.A. COMMERCIAL**  
Corporate & Investment Real Estate

**Dan Blugerman, CCIM** SENIOR ASSOCIATE  
D: 248.987.5418 | C: 248.987.5418  
dan@pacommercial.com

**Matthew Schiffman** CEO/MANAGING MEN  
D: 248.281.9907 | C: 248.281.9907  
matt@pacommercial.com

We obtained the information above from sources we believe to be reliable. However, we have not verified its accuracy and make no guarantee, warranty or representation about it. It is submitted subject to the possibility of errors, omissions, change of price, rental or other conditions, prior sale, lease or financing, or withdrawal without notice. We include projections, opinions, assumptions or estimates for example only, and they may not represent current, past or future performance of the property. You and your tax and legal advisors should conduct your own investigation of the property and transaction.

25853 5 MILE RD, REDFORD TWP, MI 48239 // FOR SALE  
ADDITIONAL PHOTOS



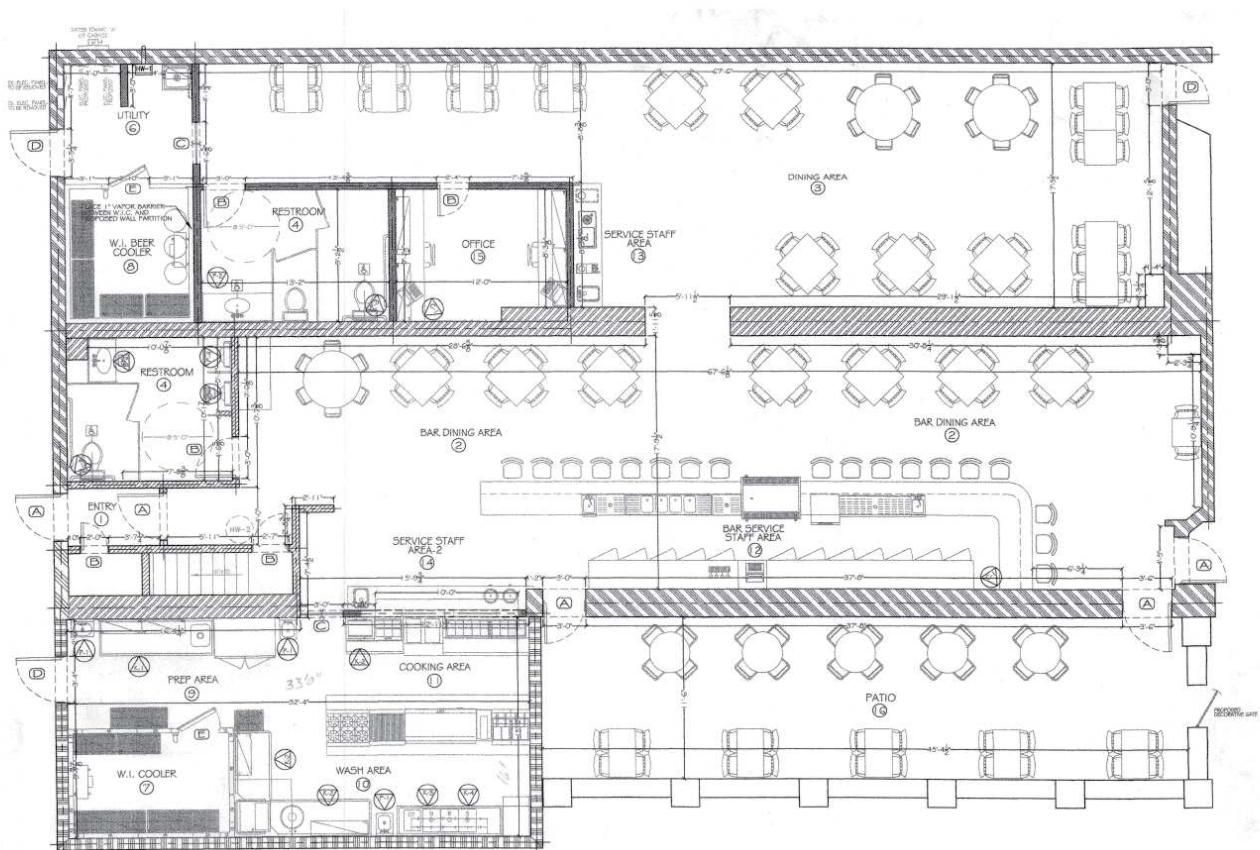
**P.A. COMMERCIAL**  
Corporate & Investment Real Estate

**Dan Blugerman, CCIM** SENIOR ASSOCIATE  
D: 248.987.5418 | C: 248.987.5418  
dan@pacommercial.com

**Matthew Schiffman** CEO/MANAGING MEN  
D: 248.281.9907 | C: 248.281.9907  
matt@pacommercial.com

We obtained the information above from sources we believe to be reliable. However, we have not verified its accuracy and make no guarantee, warranty or representation about it. It is submitted subject to the possibility of errors, omissions, change of price, rental or other conditions, prior sale, lease or financing, or withdrawal without notice. We include projections, opinions, assumptions or estimates for example only, and they may not represent current, past or future performance of the property. You and your tax and legal advisors should conduct your own investigation of the property and transaction.

25853 5 MILE RD, REDFORD TWP, MI 48239 // FOR SALE  
FLOOR PLANS



**P.A. COMMERCIAL**  
Corporate & Investment Real Estate

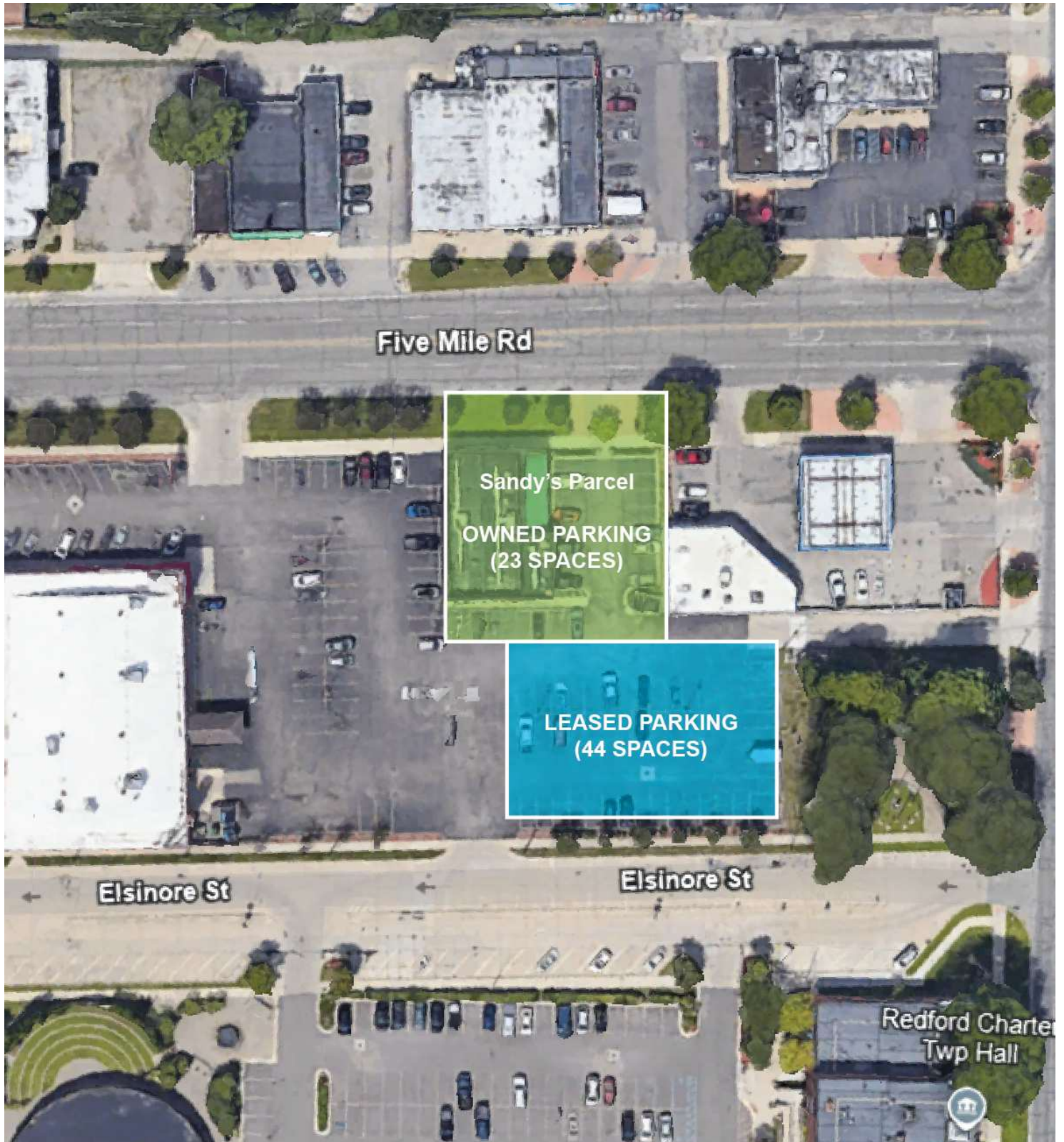
**Dan Blugerman, CCIM** SENIOR ASSOCIATE  
D: 248.987.5418 | C: 248.987.5418  
dan@pacommercial.com

**Matthew Schiffman** CEO/MANAGING MEN  
D: 248.281.9907 | C: 248.281.9907  
matt@pacommercial.com

We obtained the information above from sources we believe to be reliable. However, we have not verified its accuracy and make no guarantee, warranty or representation about it. It is submitted subject to the possibility of errors, omissions, change of price, rental or other conditions, prior sale, lease or financing, or withdrawal without notice. We include projections, opinions, assumptions or estimates for example only, and they may not represent current, past or future performance of the property. You and your tax and legal advisors should conduct your own investigation of the property and transaction.

25853 5 MILE RD, REDFORD TWP, MI 48239 // FOR SALE

## PARKING



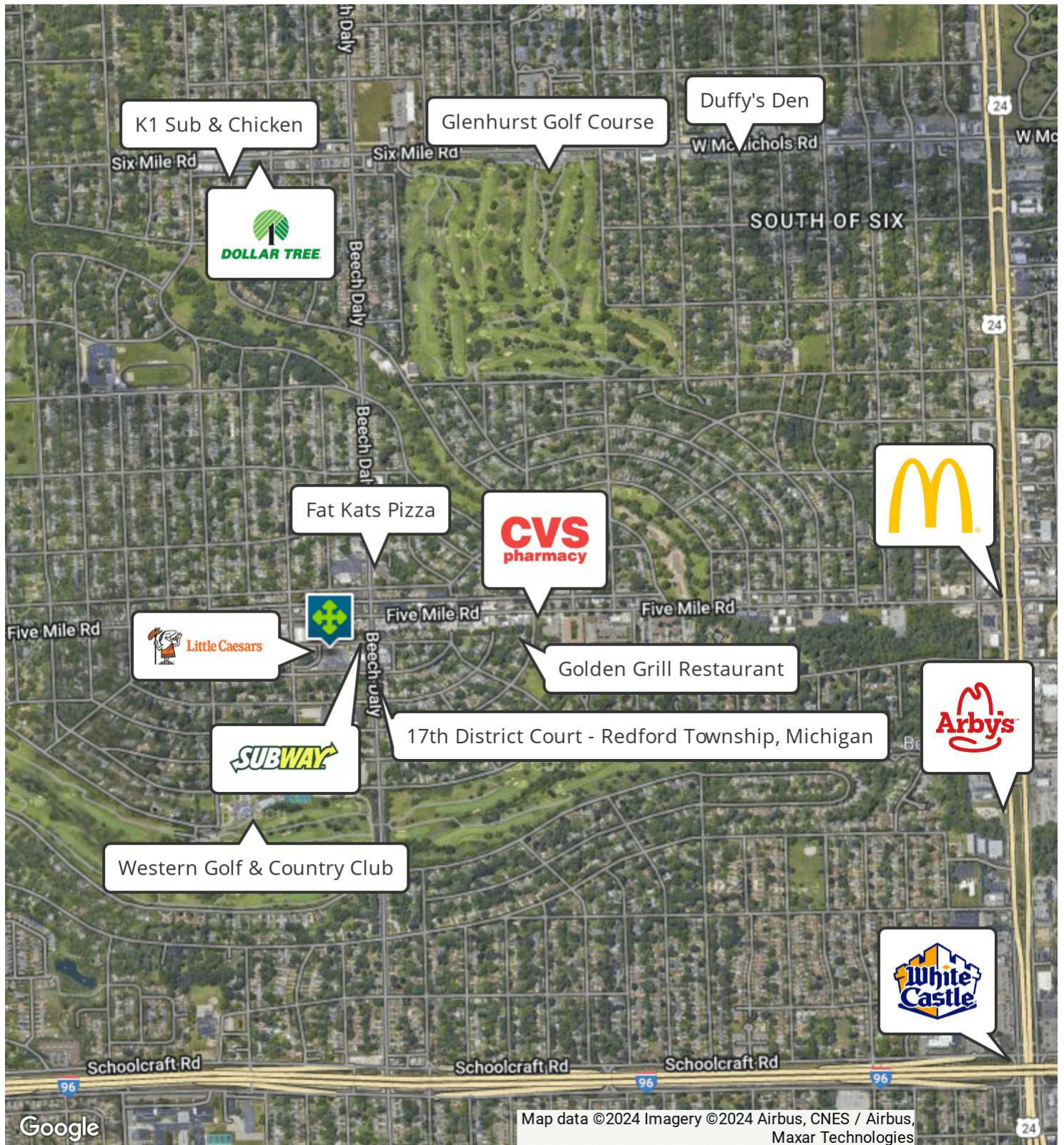
**P.A. COMMERCIAL**  
Corporate & Investment Real Estate

**Dan Blugerman, CCIM** SENIOR ASSOCIATE  
D: 248.987.5418 | C: 248.987.5418  
dan@pacommercial.com

**Matthew Schiffman** CEO/MANAGING MEN  
D: 248.281.9907 | C: 248.281.9907  
matt@pacommercial.com

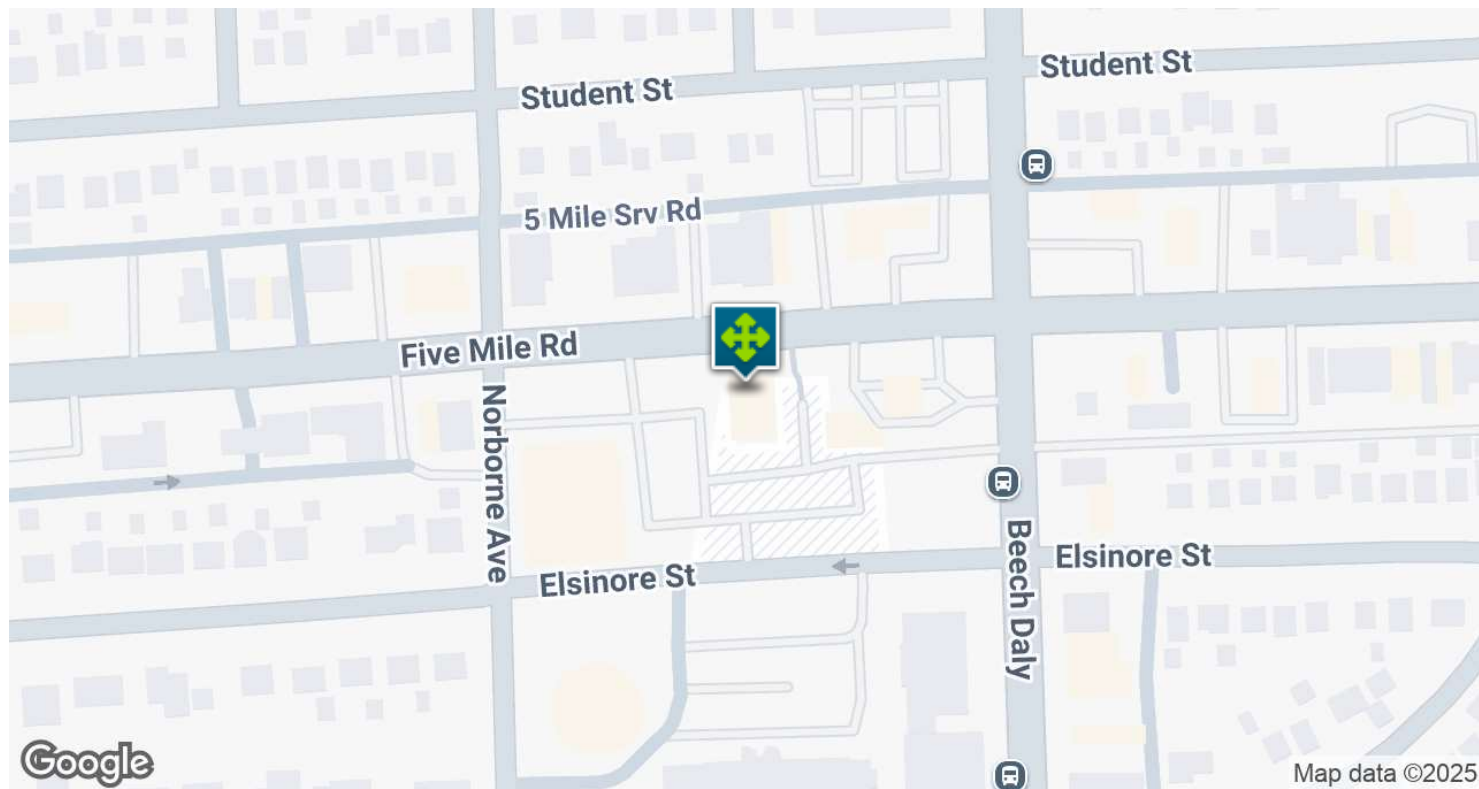
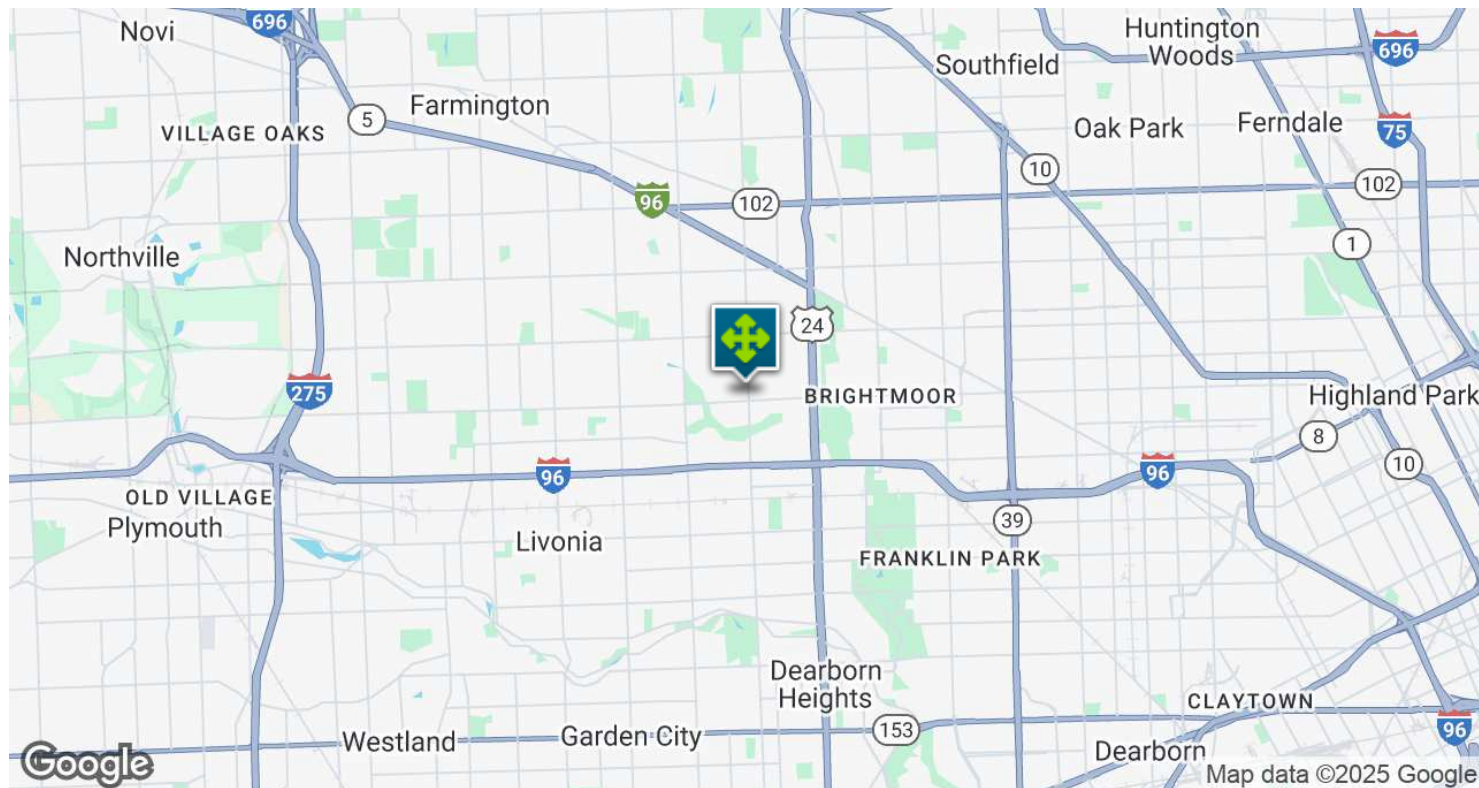
We obtained the information above from sources we believe to be reliable. However, we have not verified its accuracy and make no guarantee, warranty or representation about it. It is submitted subject to the possibility of errors, omissions, change of price, rental or other conditions, prior sale, lease or financing, or withdrawal without notice. We include projections, opinions, assumptions or estimates for example only, and they may not represent current, past or future performance of the property. You and your tax and legal advisors should conduct your own investigation of the property and transaction.

25853 5 MILE RD, REDFORD TWP, MI 48239 // FOR SALE  
RETAILER MAP



25853 5 MILE RD, REDFORD TWP, MI 48239 // FOR SALE

## LOCATION MAP



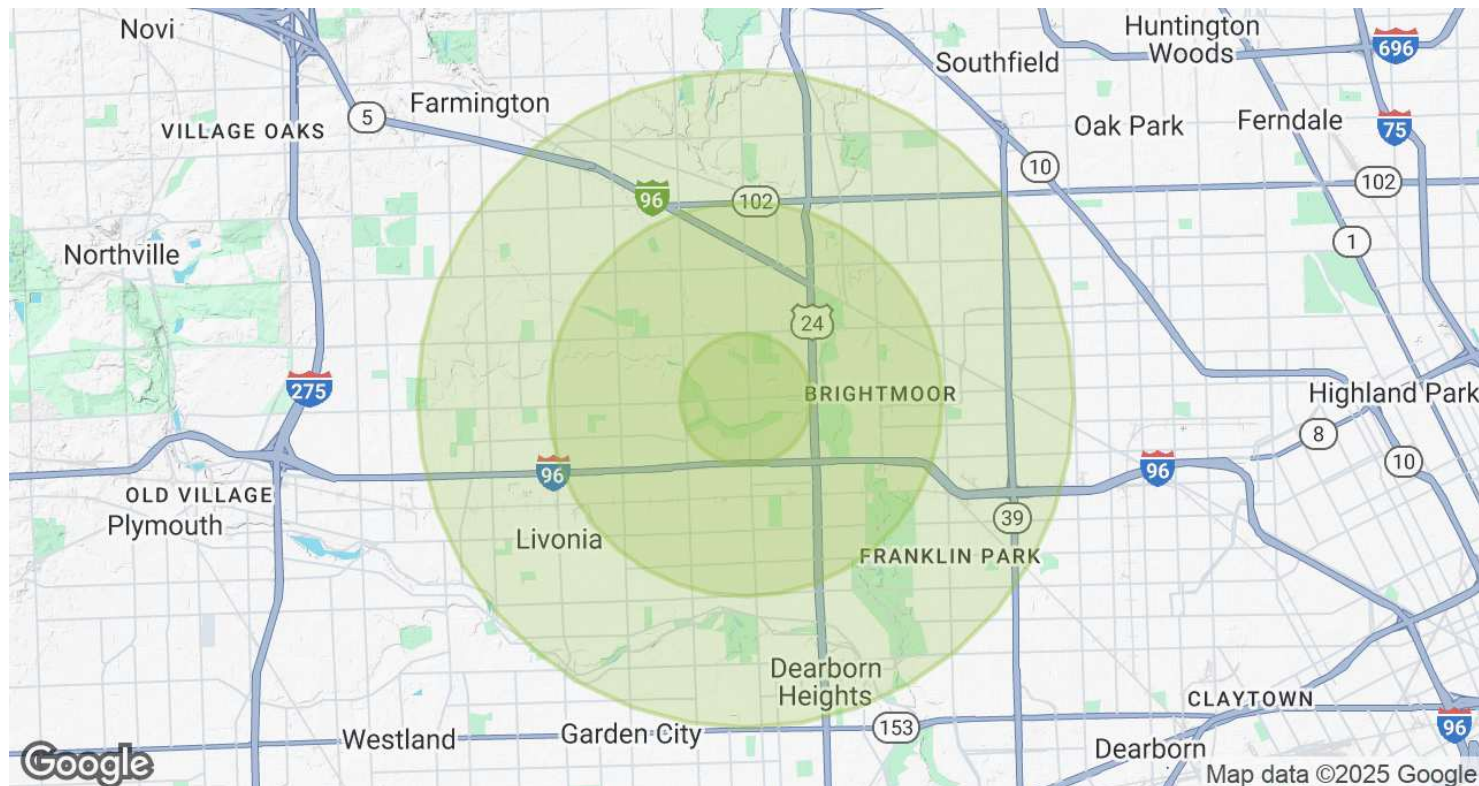
**Dan Blugerman, CCIM** SENIOR ASSOCIATE  
D: 248.987.5418 | C: 248.987.5418  
dan@pacommercial.com

**Matthew Schiffman** CEO/MANAGING MEN  
D: 248.281.9907 | C: 248.281.9907  
matt@pacommercial.com

We obtained the information above from sources we believe to be reliable. However, we have not verified its accuracy and make no guarantee, warranty or representation about it. It is submitted subject to the possibility of errors, omissions, change of price, rental or other conditions, prior sale, lease or financing, or withdrawal without notice. We include projections, opinions, assumptions or estimates for example only, and they may not represent current, past or future performance of the property. You and your tax and legal advisors should conduct your own investigation of the property and transaction.

25853 5 MILE RD, REDFORD TWP, MI 48239 // FOR SALE

## DEMOGRAPHICS MAP & REPORT



POPULATION	1 MILE	3 MILES	5 MILES
Total Population	11,668	103,893	295,056
Average Age	41	40	40
Average Age (Male)	40	39	39
Average Age (Female)	42	41	42

HOUSEHOLDS & INCOME	1 MILE	3 MILES	5 MILES
Total Households	4,850	42,636	119,123
# of Persons per HH	2.4	2.4	2.5
Average HH Income	\$87,149	\$76,458	\$76,820
Average House Value	\$148,579	\$156,700	\$170,863

Demographics data derived from AlphaMap



**Dan Blugerman, CCIM** SENIOR ASSOCIATE  
D: 248.987.5418 | C: 248.987.5418  
dan@pacommercial.com

**Matthew Schiffman** CEO/MANAGING MEN  
D: 248.281.9907 | C: 248.281.9907  
matt@pacommercial.com

We obtained the information above from sources we believe to be reliable. However, we have not verified its accuracy and make no guarantee, warranty or representation about it. It is submitted subject to the possibility of errors, omissions, change of price, rental or other conditions, prior sale, lease or financing, or withdrawal without notice. We include projections, opinions, assumptions or estimates for example only, and they may not represent current, past or future performance of the property. You and your tax and legal advisors should conduct your own investigation of the property and transaction.

25853 5 MILE RD, REDFORD TWP, MI 48239 // FOR SALE

CONTACT US



FOR MORE INFORMATION, PLEASE CONTACT:



**Dan Blugerman, CCIM**  
SENIOR ASSOCIATE

**D:** 248.987.5418

**C:** 248.987.5418

dan@pacommercial.com



**Matthew Schiffman**  
CEO/MANAGING MEMBER

**D:** 248.281.9907

**C:** 248.281.9907

matt@pacommercial.com

**P.A. Commercial**

26555 Evergreen Road, Suite 1500  
Southfield, MI 48076

**P:** 248.358.0100

**F:** 248.358.5300

[pacommercial.com](http://pacommercial.com)

Follow Us!



**P.A. COMMERCIAL**  
Corporate & Investment Real Estate

We obtained the information above from sources we believe to be reliable. However, we have not verified its accuracy and make no guarantee, warranty or representation about it. It is submitted subject to the possibility of errors, omissions, change of price, rental or other conditions, prior sale, lease or financing, or withdrawal without notice. We include projections, opinions, assumptions or estimates for example only, and they may not represent current, past or future performance of the property. You and your tax and legal advisors should conduct your own investigation of the property and transaction.